

## Editor's Note

**Introducing Statistics in Clinical Cancer Research.** Steven Piantadosi, Senior Editor .....4357

## Statistics in Clinical Cancer Research

**Randomized Phase III Clinical Trial Designs for Targeted Agents.** Antje Hoering, Mike LeBlanc, and John J. Crowley .....4358

**Multi-Arm Clinical Trials of New Agents: Some Design Considerations.** Boris Freidlin, Edward L. Korn, Robert Gray, and Alison Martin .....4368

## Molecular Pathways

**RLIP76 and Cancer.** Sanjay Awasthi, Sharad S. Singhal, Yogesh C. Awasthi, Bryan Martin, Jung-Hee Woo, C. Casey Cunningham, and Arthur E. Frankel .....4372

## Report from the FDA

**Ixabepilone in Combination with Capecitabine and as Monotherapy for Treatment of Advanced Breast Cancer Refractory to Previous Chemotherapies.** Robert J. Lechleider, Edvardas Kaminskas, Xiaoping Jiang, Robeena Aziz, Julie Bullock, Ravindra Kasliwal, Ravi Harapanhalli, Sarah Pope, Rajeshwari Sridhara, John Leighton, Brian Booth, Ramzi Dagher, Robert Justice, and Richard Pazdur.....4378

## Perspective

**Targeted Therapies to Improve Tumor Immunotherapy.** Jonathan Begley and Antoni Ribas .....4385

## Reviews

**Therapeutic Options Against *BCR-ABL1* T3151-Positive Chronic Myelogenous Leukemia.** Alfonso Quintás-Cardama and Jorge Cortes.....4392

**Comparison of Nomograms With Other Methods for Predicting Outcomes in Prostate Cancer: A Critical Analysis of the Literature.** Shahrokh F. Shariat, Pierre I. Karakiewicz, Nazareno Suardi, and Michael W. Kattan .....4400

## Human Cancer Biology

**Function of JunB in Transient Amplifying Cell Senescence and Progression of Human Prostate Cancer.** Noboru Konishi, Keiji Shimada, Mitsutoshi Nakamura, Eiwa Ishida, Ichiro Ota, Nobumichi Tanaka, and Kiyohide Fujimoto .....4408

**Intratumoral Estrogens and Estrogen Receptors in Human Non-Small Cell Lung Carcinoma.** Hiromichi Niikawa, Takashi Suzuki, Yasuhiro Miki, Satoshi Suzuki, Shuji Nagasaki, Junichi Akahira, Seiji Honma, Dean B. Evans, Shin-ichi Hayashi, Takashi Kondo, and Hironobu Sasano .....4417

**Anti-invasive and Antimetastatic Activities of Ribosomal Protein S6 Kinase 4 in Breast Cancer Cells.** Archana Thakur, Yuan Sun, Aliccia Bollig, Jack Wu, Hector Biliran, Sanjeev Banerjee, Fazlul H. Sarkar, and D. Joshua Liao.....4427

**Transformation by Oncogenic Mutants and Ligand-Dependent Activation of *FLT3* Wild-type Requires the Tyrosine Residues 589 and 591.** Sridhar Vempati, Carola Reindl, Ulla Wolf, Ruth Kern, Konstantin Petropoulos, Vegi M. Naidu, Christian Buske, Wolfgang Hiddemann, Tobias M. Kohl, and Karsten Spiekermann .....4437

## Imaging, Diagnosis, Prognosis

**Genomic Differences Between Pure Ductal Carcinoma *In Situ* of the Breast and that Associated with Invasive Disease: a Calibrated aCGH Study.** Vladimir V. Iakovlev, Nona C.R. Arneson, Vietty Wong, Chunjie Wang, Stephanie Leung, Gaiane Iakovleva, Keisha Warren, Melania Pintilie, and Susan J. Done .....4446

<b>Expression of Aurora A (but Not Aurora B) Is Predictive of Survival in Breast Cancer.</b> Yasmine Nadler, Robert L. Camp, Candice Schwartz, David L. Rimm, Harriet M. Kluger, and Yuval Kluger .....	4455
<b>Analysis and Reproducibility of 3'-Deoxy-3'-[<sup>18</sup>F]Fluorothymidine Positron Emission Tomography Imaging in Patients with Non-Small Cell Lung Cancer.</b> Anthony F. Shields, Jawana M. Lawhorn-Crews, David A. Briston, Sajad Zalzal, Shirish Gadgeel, Kirk A. Douglas, Thomas J. Mangner, Lance K. Heilbrun, and Otto Muzik .....	4463
<b>Visualization of Circulating Melanoma Cells in Peripheral Blood of Patients with Primary Uveal Melanoma.</b> Anja Ulmer, Julia Beutel, Daniela Süsskind, Ralf-Dieter Hilgers, Focke Ziemssen, Matthias Lüke, Martin Röcken, Martin Rohrbach, Gerhard Fierlbeck, Karl-Ulrich Bartz-Schmidt, and Salvatore Grisanti .....	4469

## Cancer Therapy: Clinical

<b>Irradiance-Dependent Photobleaching and Pain in <math>\delta</math>-Aminolevulinic Acid-Photodynamic Therapy of Superficial Basal Cell Carcinomas.</b> William J. Cottrell, Anne D. Paquette, Kenneth R. Keymel, Thomas H. Foster, and Allan R. Oseroff.....	4475
<b>A Phase I and Pharmacokinetic Study of Lapatinib in Combination with Letrozole in Patients with Advanced Cancer.</b> Quincy S.C. Chu, Mary E. Cianfrocca, Lori J. Goldstein, Meg Gale, Nicholas Murray, Jill Loftiss, Nikita Arya, Kevin M. Koch, Lini Pandite, Ronald A. Fleming, Elaine Paul, and Eric K. Rowinsky.....	4484
<b>Phase II Trial of Curcumin in Patients with Advanced Pancreatic Cancer.</b> Navneet Dhillon, Bharat B. Aggarwal, Robert A. Newman, Robert A. Wolff, Ajaikumar B. Kunnumakkara, James L. Abbruzzese, Chuan S. Ng, Vladimir Badmaev, and Razelle Kurzrock.....	4491
<b>Histone Deacetylase Inhibitor Panobinostat Induces Clinical Responses with Associated Alterations in Gene Expression Profiles in Cutaneous T-Cell Lymphoma.</b> Leigh Ellis, Yan Pan, Gordon K. Smyth, Daniel J. George, Chris McCormack, Roxanne Williams-Truax, Monica Mita, Joachim Beck, Howard Burris, Gail Ryan, Peter Atadja, Dale Butterfoss, Margaret Dugan, Kenneth Culver, Ricky W. Johnstone, and H. Miles Prince.....	4500
<b>Class III <math>\beta</math>-Tubulin Isotype Predicts Response in Advanced Breast Cancer Patients Randomly Treated Either with Single-Agent Doxorubicin or Docetaxel.</b> Carlos M. Galmarini, Isabelle Treilleux, Fatima Cardoso, Chantal Bernard-Marty, Virginie Durbecq, David Gancberg, Marie-Christine Bissery, Marianne Paesmans, Denis Larsimont, Martine J. Piccart, Angelo Di Leo, and Charles Dumontet.....	4511
<b>A Phase I and Pharmacokinetic Study of the Oral Histone Deacetylase Inhibitor, MS-275, in Patients with Refractory Solid Tumors and Lymphomas.</b> Lia Gore, Mace L. Rothenberg, Cindy L. O'Bryant, Mary Kay Schultz, Alan B. Sandler, Denise Coffin, Candice McCoy, Astrid Schott, Catherine Scholz, and S. Gail Eckhardt.....	4517
<b>Analysis of Overall Survival in Patients with Nonmetastatic Castration-Resistant Prostate Cancer Treated with Vaccine, Nilutamide, and Combination Therapy.</b> Ravi A. Madan, James L. Gulley, Jeffrey Schlom, Seth M. Steinberg, David J. Liewehr, William L. Dahut, and Philip M. Arlen.....	4526
<b>Local Administration of PF-3512676 CpG-B Instigates Tumor-Specific CD8<sup>+</sup> T-Cell Reactivity in Melanoma Patients.</b> Barbara G. Molenkamp, Berbel J.R. Sluijter, Paul A.M. van Leeuwen, Saskia J.A.M. Santegoets, Sybren Meijer, Pepijn G.J.T.B. Wijnands, John B.A.G. Haanen, Alfons J.M. van den Eertwegh, Rik J. Scheper, and Tanja D. de Gruijl.....	4532
<b>ABCB1 Genetic Variation Influences the Toxicity and Clinical Outcome of Patients with Androgen-Independent Prostate Cancer Treated with Docetaxel.</b> Tristan M. Sissung, Caitlin E. Baum, John Deeken, Douglas K. Price, Jeanny Aragon-Ching, Seth M. Steinberg, William Dahut, Alex Sparreboom, and William D. Figg.....	4543
<b>Therapeutic Consequences from Molecular Biology for Gastrointestinal Stromal Tumor Patients Affected by Neurofibromatosis Type 1.</b> Chiara Mussi, Hans-Ulrich Schildhaus, Alessandro Gronchi, Eva Wardelmann, and Peter Hohenberger.....	4550

- Prevention and Treatment of Experimental Estrogen Receptor–Negative Mammary Carcinogenesis by the Synthetic Triterpenoid CDDO-Methyl Ester and the Rexinoid LG100268.** Karen Liby, Renee Risingsong, Darlene B. Royce, Charlotte R. Williams, Mark M. Yore, Tadashi Honda, Gordon W. Gribble, William W. Lamph, Nicola Vannini, Ilaria Sogno, Adriana Albini, and Michael B. Sporn .....4556
- Expression of t-DARPP Mediates Trastuzumab Resistance in Breast Cancer Cells.** Abbes Belkhir, Altaf A. Dar, Dun Fa Peng, Mohammad H. Razvi, Cammie Rinehart, Carlos L. Arteaga, and Wael El-Rifai.....4564
- Molecular Characterization of the Pediatric Preclinical Testing Panel.** Geoffrey Neale, Xiaoping Su, Christopher L. Morton, Doris Phelps, Richard Gorlick, Richard B. Lock, C. Patrick Reynolds, John M. Maris, Henry S. Friedman, Jeffrey Dome, Joseph Khoury, Timothy J. Triche, Robert C. Seeger, Richard Gilbertson, Javed Khan, Malcolm A. Smith, and Peter J. Houghton.....4572
- Effective Immunoconjugate Therapy in Cancer Models Targeting a Serine Protease of Tumor Fibroblasts.** Elinborg Ostermann, Pilar Garin-Chesa, Karl Heinz Heider, Milena Kalat, Herbert Lamche, Christina Puri, Donscho Kerjaschki, Wolfgang J. Rettig, and Guenther R. Adolf.....4584
- KML001 Cytotoxic Activity Is Associated with Its Binding to Telomeric Sequences and Telomere Erosion in Prostate Cancer Cells.** Pornima Phatak, Fangping Dai, Melody Butler, M.P. Nandakumar, Peter L. Gutierrez, Martin J. Edelman, Hans Hendriks, and Angelika M. Burger.....4593
- Paclitaxel Encapsulated in Cationic Liposomes Increases Tumor Microvessel Leakiness and Improves Therapeutic Efficacy in Combination with Cisplatin.** Sebastian Strieth, Martin E. Eichhorn, Alexander Werner, Birgitta Sauer, Michael Teifel, Uwe Michaelis, Alexander Berghaus, and Marc Dellian .....4603
- A Novel Recombinant Soluble Splice Variant of Met Is a Potent Antagonist of the Hepatocyte Growth Factor/Scatter Factor-Met Pathway.** Zohar Tiran, Anat Oren, Chen Hermesh, Galit Rotman, Zurit Levine, Hagit Amitai, Tal Handelsman, Merav Beiman, Aviva Chen, Dalit Landesman-Milo, Liat Dassa, Yair Peres, Cynthia Koifman, Sarit Glezer, Rinat Vidal-Finkelstein, Kobi Bahat, Tania Pergam, Cylia Israel, Judith Horev, Ilan Tsarfaty, and Michal Ayalon-Soffer .....4612
- Slug (SNAI2) Down-Regulation by RNA Interference Facilitates Apoptosis and Inhibits Invasive Growth in Neuroblastoma Preclinical Models.** Roberta Vitali, Camillo Mancini, Vincenzo Cesi, Barbara Tanno, Mariateresa Mancuso, Gianluca Bossi, Ying Zhang, Robert V. Martinez, Bruno Calabretta, Carlo Dominici, and Giuseppe Raschella .....4622
- Dual Tyrosine Kinase Inhibitor for Focal Adhesion Kinase and Insulin-like Growth Factor-I Receptor Exhibits Anticancer Effect in Esophageal Adenocarcinoma *In vitro* and *In vivo*.** Nobuyuki Watanabe, Munenori Takaoka, Kazufumi Sakurama, Yasuko Tomono, Shinji Hatakeyama, Osamu Ohmori, Takayuki Motoki, Yasuhiro Shirakawa, Tomoki Yamatsuji, Minoru Haisa, Junji Matsuoka, David G. Beer, Hitoshi Nagatsuka, Noriaki Tanaka, and Yoshio Naomoto .....4631
- Statin-Dependent Suppression of the Akt/Mammalian Target of Rapamycin Signaling Cascade and Programmed Cell Death 4 Up-Regulation in Renal Cell Carcinoma.** Jennifer Woodard, Antonella Sassano, Nissim Hay, and Leonidas C. Platanius .....4640
- Lenalidomide Enhances Natural Killer Cell and Monocyte-Mediated Antibody-Dependent Cellular Cytotoxicity of Rituximab-Treated CD20<sup>+</sup> Tumor Cells.** Lei Wu, Mary Adams, Troy Carter, Roger Chen, George Muller, David Stirling, Peter Schafer, and J. Blake Bartlett.....4650
- Differential Effect of Doxorubicin and Zoledronic Acid on Intraosseous versus Extraosseous Breast Tumor Growth *In vivo*.** Penelope D. Ottewell, Blandine Deux, Hannu Mönkkönen, Simon Cross, Robert E. Coleman, Philippe Clezardin, and Ingunn Holen .....4658

---

## Cancer Prevention and Susceptibility

---

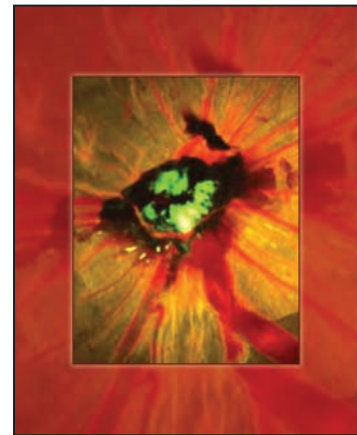
**Penetrance Analysis of the *PALB2* c.1592delT Founder Mutation.** Hannele Erkkö, James G. Dowty, Jenni Nikkilä, Kirsi Syrjäkoski, Arto Mannermaa, Katri Pylkäs, Melissa C. Southey, Kaija Holli, Anne Kallioniemi, Arja Jukkola-Vuorinen, Vesa Kataja, Veli-Matti Kosma, Bing Xia, David M. Livingston, Robert Winqvist, and John L. Hopper.....4667

**A Novel Breast Cancer–Associated *BRIP1* (*FANCI/BACH1*) Germ-line Mutation Impairs Protein Stability and Function.** Arcangela De Nicolo, Mariella Tancredi, Grazia Lombardi, Cristina Chantal Flemma, Serena Barbuti, Claudio Di Cristofano, Bijan Sobhian, Generoso Bevilacqua, Ronny Drapkin, and Maria Adelaide Caligo.....4672

---

### About the Cover

Two DU145 clones, with low and high *junB* expression, were transfected with GFP-encoding plasmids and plated on chick chorioallantoic membrane (CAM) to investigate the potential for invasion. After transfection, the clones were seeded atop the CAM of 11-day-old chicks and cultured for 3 or 5 days. More numerous macroscopic allantoic vessels radiating in a wheel pattern were seen toward the low *junB* clone than toward the high *junB* clone. CAM tissues were fixed and stained with anti-GFP and the invading cell numbers and the depth of invasion were quantified from the CAM surface. For more details, please see Konishi and coworkers on page 4408 in this issue.



# Clinical Cancer Research

**14 (14)**

*Clin Cancer Res* 2008;14:4357-4680.

**Updated version** Access the most recent version of this article at:  
<http://clincancerres.aacrjournals.org/content/14/14>

**E-mail alerts** [Sign up to receive free email-alerts](#) related to this article or journal.

**Reprints and Subscriptions** To order reprints of this article or to subscribe to the journal, contact the AACR Publications Department at [pubs@aacr.org](mailto:pubs@aacr.org).

**Permissions** To request permission to re-use all or part of this article, use this link <http://clincancerres.aacrjournals.org/content/14/14>. Click on "Request Permissions" which will take you to the Copyright Clearance Center's (CCC) Rightslink site.