

## CCR Translations

- Turmeric and Green Tea: A Recipe for the Treatment of B-Chronic Lymphocytic Leukemia.** Laura S. Angelo and Razelle Kurzrock ..... 1123  
  *Commentary on Ghosh et al., p. 1250*

## Molecular Pathways

- Bcl-2 Inhibitors: Targeting Mitochondrial Apoptotic Pathways in Cancer Therapy.** Min H. Kang and C. Patrick Reynolds ..... 1126
- Mutations and Response to Epidermal Growth Factor Receptor Inhibitors.** Pierre Laurent-Puig, Astrid Lievre, and H el ene Blons ..... 1133

## Review

- Role of ADAMs in Cancer Formation and Progression.** Michael J. Duffy, Eadaoin McKiernan, Norma O'Donovan, and Patricia M. McGowan ..... 1140

## Human Cancer Biology

- IL15 Can Reverse the Unresponsiveness of Wilms' Tumor Antigen-Specific CTL in Patients with Prostate Cancer.** Judy W. King, Sharyn Thomas, Fabrizio Corsi, Liquan Gao, Roberto Dina, Roopinder Gillmore, Katharine Pigott, Amir Kaisary, Hans J. Stauss, and Jonathan Waxman ..... 1145

- Distinct BRAF (V600E) and KRAS Mutations in High Microsatellite Instability Sporadic Colorectal Cancer in African Americans.** Krishan Kumar, Hassan Brim, Francis Giardiello, Duane T. Smoot, Mehdi Nouraie, Edward L. Lee, and Hassan Ashktorab ..... 1155

- Cytogenetic and Molecular Tumor Profiling for Type 1 and Type 2 Papillary Renal Cell Carcinoma.** Tobias Klatte, Allan J. Pantuck, Jonathan W. Said, David B. Seligson, Nagesh P. Rao, Jeffrey C. LaRochelle, Brian Shuch, Amnon Zisman, Fairouz F. Kabbinavar, and Arie S. Belldegrun ..... 1162

- Adult Xp11 Translocation Renal Cell Carcinoma Diagnosed by Cytogenetics and Immunohistochemistry.** Yoshinobu Komai, Mutsunori Fujiwara, Yasuhisa Fujii, Hiroyuki Mukai, Junji Yonese, Satoru Kawakami, Shinya Yamamoto, Toshiro Migita, Yuichi Ishikawa, Morito Kurata, Takuro Nakamura, and Iwao Fukui ..... 1170

- Uncovering Growth-Suppressive MicroRNAs in Lung Cancer.** Xi Liu, Lorenzo F. Sempere, Fabrizio Galimberti, Sarah J. Freemantle, Candice Black, Konstantin H. Dragnev, Yan Ma, Steven Fiering, Vincent Memoli, Hua Li, James DiRenzo, Murray Korc, Charles N. Cole, Mads Bak, Sakari Kauppinen, and Ethan Dmitrovsky ..... 1177

- Pharmacologic Unmasking of Epigenetically Silenced Genes in Breast Cancer.** Kimberly Laskie Ostrow, Hannah Lui Park, Mohammad Obaidul Hoque, Myoung Sook Kim, Junwei Liu, Pedram Argani, William Westra, Wim Van Criekinge, and David Sidransky ..... 1184

## Cancer Therapy: Preclinical

- Combining the Endoplasmic Reticulum Stress-Inducing Agents Bortezomib and Fenretinide as a Novel Therapeutic Strategy for Metastatic Melanoma.** David S. Hill, Shaun Martin, Jane L. Armstrong, Ross Flockhart, Joge J. Tonison, Dominic G. Simpson, Mark A. Birch-Machin, Christopher P.F. Redfern, and Penny E. Lovat ..... 1192

<b>The Combined Therapeutic Effects of Bortezomib and Fenretinide on Neuroblastoma Cells Involve Endoplasmic Reticulum Stress Response.</b> Gabriella Pagnan, Daniela Di Paolo, Roberta Carosio, Fabio Pastorino, Danilo Marimpietri, Chiara Brignole, Annalisa Pezzolo, Monica Loi, Luis J.V. Galiotta, Federica Piccardi, Michele Cilli, Beatrice Nico, Domenico Ribatti, Vito Pistoia, and Mirco Ponzoni .....	<b>1199</b>
<b>Preclinical Studies in Support of Defibrotide for the Treatment of Multiple Myeloma and Other Neoplasias.</b> Constantine S. Mitsiades, Cecile Rouleau, Cinara Echart, Krishna Menon, Beverly Teicher, Maria Distaso, Antonio Palumbo, Mario Boccardo, Kenneth C. Anderson, Massimo Iacobelli, and Paul G. Richardson .....	<b>1210</b>
<b>Local Delivery of Poly Lactic-co-glycolic Acid Microspheres Containing Imatinib Mesylate Inhibits Intracranial Xenograft Glioma Growth.</b> Ofra Benny, Lata G. Menon, Gilert Ariel, Effrat Goren, Seung-Ki Kim, Chaney Stewman, Peter M. Black, Rona S. Carroll, and Marcelle Machluf.....	<b>1222</b>
<b>Retinoblastoma Tumor Suppressor Gene Expression Determines the Response to Sequential Flavopiridol and Doxorubicin Treatment in Small-Cell Lung Carcinoma.</b> Tulin Budak-Alpdogan, Bobin Chen, Anjali Warriar, Daniel J. Medina, Dirk Moore, and Joseph R. Bertino .....	<b>1232</b>
<b>Inhibition of Poly(ADP-Ribose) Polymerase-1 Enhances Temozolomide and Topotecan Activity against Childhood Neuroblastoma.</b> Rachel A. Daniel, Agata L. Rozanska, Huw D. Thomas, Evan A. Mulligan, Yvette Drew, Deborah J. Castelbuono, Zdenek Hostomsky, E. Ruth Plummer, Alan V. Boddy, Deborah A. Tweddle, Nicola J. Curtin, and Steven C. Clifford .....	<b>1241</b>
<b>Curcumin Inhibits Prosurvival Pathways in Chronic Lymphocytic Leukemia B Cells and May Overcome Their Stromal Protection in Combination with EGCG.</b> Asish K. Ghosh, Neil E. Kay, Charla R. Secreto, and Tait D. Shanafelt .....	<b>1250</b>
<b>High Cytotoxicity of Cisplatin Nanocapsules in Ovarian Carcinoma Cells Depends on Uptake by Caveolae-Mediated Endocytosis.</b> Irene H.L. Hamelers, Rutger W.H.M. Staffhorst, Jarno Voortman, Ben de Kruijff, Jan Reedijk, Paul M.P. van Bergen en Henegouwen, and Anton I.P.M. de Kroon .....	<b>1259</b>
<b>Soy-Derived Isoflavones Inhibit the Growth of Canine Lymphoid Cell Lines.</b> Vahbiz Jamadar-Shroff, Mark G. Papich, and Steven E. Suter .....	<b>1269</b>
<b>AKT/mTOR Pathway Activation and BCL-2 Family Proteins Modulate the Sensitivity of Human Small Cell Lung Cancer Cells to RAD001.</b> Marin Marinov, Algirdas Ziogas, Olivier E. Pardo, Liwen Terence Tan, Tony Dhillon, Francesco A. Mauri, Heidi A. Lane, Nicholas R. Lemoine, Uwe Zangemeister-Wittke, Michael J. Seckl, and Alexandre Arcaro .....	<b>1277</b>
<b>Molecular Mechanisms of Tamoxifen Therapy for Cholangiocarcinoma: Role of Calmodulin.</b> Pritish Pawar, Liping Ma, Chang Hyun Byon, Hui Liu, Eun-Young Ahn, Nirag Jhala, Juan P. Arnoletti, Jay M. McDonald, and Yabing Chen .....	<b>1288</b>
<b>Marked Activity of Irinotecan and Rapamycin Combination toward Colon Cancer Cells <i>In vivo</i> and <i>In vitro</i> Is Mediated through Cooperative Modulation of the Mammalian Target of Rapamycin/Hypoxia-Inducible Factor-1<math>\alpha</math> Axis.</b> Erwan Pencreach, Eric Guérin, Céline Nicolet, Isabelle Lelong-Rebel, Anne-Claire Voegeli, Pierre Oudet, Annette K. Larsen, Marie-Pierre Gaub, and Dominique Guenot.....	<b>1297</b>
<b>Small-Molecule Drugs Mimicking DNA Damage: A New Strategy for Sensitizing Tumors to Radiotherapy.</b> Maria Quanz, Nathalie Berthault, Christophe Roulin, Maryline Roy, Aurélie Herbette, Céline Agrario, Christophe Alberti, Véronique Josserand, Jean-Luc Coll, Xavier Sastre-Garau, Jean-Marc Cosset, Lionel Larue, Jian-Sheng Sun, and Marie Dutreix.....	<b>1308</b>
<b>Antitumor Activity of an Oncolytic Adenoviral-CD40 Ligand (CD154) Transgene Construct in Human Breast Cancer Cells.</b> Erica M. Gomes, Margret S. Rodrigues, Anagha P. Phadke, Lindsay D. Butcher, Cherry Starling, Salina Chen, Dongkun Chang, Ruben Hernandez-Alcoceba, Joseph T. Newman, Marvin J. Stone, and Alex W. Tong.....	<b>1317</b>

---

**Mitotic Deregulation by Survivin in ErbB2-Overexpressing Breast Cancer Cells Contributes to Taxol Resistance.** Jing Lu, Ming Tan, Wen-Chien Huang, Ping Li, Hua Guo, Ling-Ming Tseng, Xiao-hua Su, Wen-Tao Yang, Warapen Treekitkammongkol, Michael Andreeff, Fraser Symmans, and Dihua Yu .....1326

**Role of the Microenvironment for Radiosensitization by Patupilone.** Carla Rohrer Bley, Wolfram Jochum, Katrin Orłowski, Polina Furmanova, Van Vuong, Paul M.J. McSheehy, and Martin Pruschy.....1335

## Imaging, Diagnosis, Prognosis

**Longitudinal Analysis and Prognostic Effect of Cancer-Testis Antigen Expression in Multiple Myeloma.** Djordje Atanackovic, Tim Luetkens, York Hildebrandt, Julia Arfsten, Katrin Bartels, Christiane Horn, Tanja Stahl, Yanran Cao, Axel R. Zander, Carsten Bokemeyer, and Nicolaus Kröger .....1343

**A Genetic Expression Profile Associated with Oral Cancer Identifies a Group of Patients at High Risk of Poor Survival.** Eduardo Méndez, John R. Houck, David R. Doody, Wenhong Fan, Pawadee Lohavanichbutr, Tessa C. Rue, Bevan Yueh, Neal D. Futran, Melissa P. Upton, D. Gregory Farwell, Patrick J. Heagerty, Lue Ping Zhao, Stephen M. Schwartz, and Chu Chen .....1353

**Osteopontin Levels in an Asbestos-Exposed Population.** Eun-Kee Park, Paul S. Thomas, Anthony R. Johnson, and Deborah H. Yates .....1362

**A TaqMan Low-Density Array to Predict Outcome in Advanced Hodgkin's Lymphoma Using Paraffin-Embedded Samples.** Beatriz Sánchez-Espiridión, Abel Sánchez-Aguilera, Carlos Montalbán, Carmen Martín, Rafael Martínez, Joaquín González-Carrero, Concepción Poderos, Carmen Bellas, Manuel F. Fresno, Cesar Morante, Maria J. Mestre, Miguel Mendez, Francisco Mazorra, Eulogio Conde, Angel Castaño, Pedro Sánchez-Godoy, José F. Tomas, Manolo M. Morente, Miguel A. Piris, and Juan F. García for the Spanish Hodgkin's Lymphoma Study Group .....1367

**Fascin Regulates Prostate Cancer Cell Invasion and Is Associated with Metastasis and Biochemical Failure in Prostate Cancer.** Andrew D. Darnel, Emy Behmoaram, Robin T. Vollmer, Jacques Corcos, Krikor Bijian, Kanishka Sircar, Jie Su, Jinsong Jiao, Moulay A. Alaoui-Jamali, and Tarek A. Bismar .....1376

**Angiopoietin-2 Levels Are Associated with Disease Progression in Metastatic Malignant Melanoma.** Iris Helfrich, Lutz Edler, Antje Sucker, Markus Thomas, Sven Christian, Dirk Schadendorf, and Hellmut G. Augustin .....1384

**Sphingosine Kinase 1 Is Associated with Gastric Cancer Progression and Poor Survival of Patients.** Wen Li, Chun-Ping Yu, Jin-tang Xia, Ling Zhang, Gui-Xiang Weng, Hai-qing Zheng, Qing-li Kong, Li-juan Hu, Mu-Sheng Zeng, Yi-xin Zeng, Mengfeng Li, Jun Li, and Li-Bing Song .....1393

## Cancer Therapy: Clinical

**Genetic and Epigenetic SLC18A2 Silencing in Prostate Cancer Is an Independent Adverse Predictor of Biochemical Recurrence after Radical Prostatectomy.** Karina Dalsgaard Sørensen, Peter Johannes Wild, Ashkan Mortezaei, Katja Adolf, Niels Tørring, Sara Heebøll, Benedicte Parm Ullhøi, Peter Ottosen, Tullio Sulser, Thomas Hermanns, Holger Moch, Michael Borre, Torben Falck Ørntoft, and Lars Dyrskjøl .....1400

**Hand-Foot Skin Reaction Increases with Cumulative Sorafenib Dose and with Combination Anti-Vascular Endothelial Growth Factor Therapy.** Nilofer S. Azad, Jeanny B. Aragon-Ching, William L. Dahut, Martin Gutierrez, William D. Figg, Lokesh Jain, Seth M. Steinberg, Maria L. Turner, Elise C. Kohn, and Heidi H. Kong .....1411

<b>Integrated Genome-Wide DNA Copy Number and Expression Analysis Identifies Distinct Mechanisms of Primary Chemoresistance in Ovarian Carcinomas.</b> Dariush Etemadmoghadam, Anna deFazio, Rameen Beroukhi, Craig Mermel, Joshy George, Gad Getz, Richard Tothill, Aikou Okamoto, Maria B. Raeder, AOCs Study Group, Paul Harnett, Stephen Lade, Lars A. Akslen, Anna V. Tinker, Bianca Locandro, Kathryn Alsop, Yoke-Eng Chiew, Nadia Traficante, Sian Fereday, Daryl Johnson, Stephen Fox, William Sellers, Mitsuyoshi Urashima, Helga B. Salvesen, Matthew Meyerson, and David Bowtell.....	<b>1417</b>
<b>A Phase I Trial to Determine the Safety, Tolerability, and Maximum Tolerated Dose of Deforolimus in Patients with Advanced Malignancies.</b> Christine M. Hartford, Apurva A. Desai, Linda Janisch, Theodore Karrison, Victor M. Rivera, Lori Berk, John W. Loewy, Hedy Kindler, Walter M. Stadler, Heather L. Knowles, Camille Bedrosian, and Mark J. Ratain.....	<b>1428</b>
<b>Pharmacodynamic Effects of Seliciclib, an Orally Administered Cell Cycle Modulator, in Undifferentiated Nasopharyngeal Cancer.</b> Wen-Son Hsieh, Ross Soo, Bee-Keow Peh, Thomas Loh, Difeng Dong, Donny Soh, Lim-Soon Wong, Simon Green, Judy Chiao, Chun-Ying Cui, Yoke-Fong Lai, Soo-Chin Lee, Benjamin Mow, Richie Soong, Manuel Salto-Tellez, and Boon-Cher Goh .....	<b>1435</b>
<b>Immunogenicity and Antitumor Effects of Vaccination with Peptide Vaccine+/- Granulocyte-Monocyte Colony-Stimulating Factor and/or IFN-<math>\alpha</math>2b in Advanced Metastatic Melanoma: Eastern Cooperative Oncology Group Phase II Trial E1696.</b> John M. Kirkwood, Sandra Lee, Stergios J. Moschos, Mark R. Albertini, John C. Michalak, Cindy Sander, Theresa Whiteside, Lisa H. Butterfield, and Louis Weiner.....	<b>1443</b>
<b>Multicenter Phase II Study of Lapatinib in Patients with Brain Metastases from HER2-Positive Breast Cancer.</b> Nancy U. Lin, Véronique Diéras, Devchand Paul, Dominique Lossignol, Christos Christodoulou, Hans-Joachim Stemmler, Henri Roché, Minetta C. Liu, Richard Greil, Eva Ciruelos, Sibylle Loibl, Stefania Gori, Andrew Wardley, Denise Yardley, Adam Brufsky, Joanne L. Blum, Stephen D. Rubin, Bernie Dharan, Klaudia Steplewski, Denise Zembryki, Cristina Oliva, Debasish Roychowdhury, Paolo Paoletti, and Eric P. Winer.....	<b>1452</b>
<b>Phase I Trial of 2-Methoxyestradiol NanoCrystal Dispersion in Advanced Solid Malignancies.</b> Amye J. Tevaarwerk, Kyle D. Holen, Dona B. Alberti, Carolyn Sidor, Jamie Arnott, Check Quon, George Wilding, and Glenn Liu.....	<b>1460</b>
<b>Phase I and Pharmacokinetic Study of Pegylated Liposomal CKD-602 in Patients with Advanced Malignancies.</b> William C. Zamboni, Suresh Ramalingam, David M. Friedland, Robert P. Edwards, Ronald G. Stoller, Sandra Strychor, Lauren Maruca, Beth A. Zamboni, Chandra P. Belani, and Ramesh K. Ramanathan.....	<b>1466</b>
<b>Overexpression of Class III <math>\beta</math>-Tubulin Predicts Good Response to Taxane-Based Chemotherapy in Ovarian Clear Cell Adenocarcinoma.</b> Daisuke Aoki, Yoshinao Oda, Satoshi Hattori, Ken-ichi Taguchi, Yoshihiro Ohishi, Yuji Basaki, Shinji Oie, Nao Suzuki, Suminori Kono, Masazumi Tsuneyoshi, Mayumi Ono, Takashi Yanagawa, and Michihiko Kuwano.....	<b>1473</b>
<b>Phase I Study of Cediranib in Combination with Oxaliplatin and Infusional 5-Fluorouracil in Patients with Advanced Colorectal Cancer.</b> Eric Chen, Derek Jonker, Isabelle Gauthier, Martha MacLean, Julie Wells, Jean Powers, and Lesley Seymour.....	<b>1481</b>
<b>Ras/Raf-1/MAPK Pathway Mediates Response to Tamoxifen but not Chemotherapy in Breast Cancer Patients.</b> Liane M. McGlynn, Tove Kirkegaard, Joanne Edwards, Sian Tovey, David Cameron, Chris Twelves, John M.S. Bartlett, and Timothy G. Cooke .....	<b>1487</b>
<b>Population Pharmacokinetics of Romidepsin in Patients with Cutaneous T-Cell Lymphoma and Relapsed Peripheral T-Cell Lymphoma.</b> Sukyung Woo, Erin R. Gardner, Xiaohong Chen, Sandra B. Ockers, Caitlin E. Baum, Tristan M. Sissung, Douglas K. Price, Robin Frye, Richard L. Piekarz, Susan E. Bates, and William D. Figg .....	<b>1496</b>

---

## Letters to the Editor

- Quantitative Analysis of Circulating Tumor Cells as a Survival Predictor in Metastatic Castration-Resistant Prostate Cancer: Missing Parts in a Superb Study.** Gennadi V. Glinsky .....1504
- Reply to the Letter to the Editor from Gennadi Glinsky.** Johann S. de Bono, Christopher Parker, Howard I. Scher, R. Bruce Montgomery, M. Craig Miller, Henk Tissing, Gerald V. Doyle, Leon W.W.M. Terstappen, Kenneth J. Pienta, and Derek Raghavan .....1504

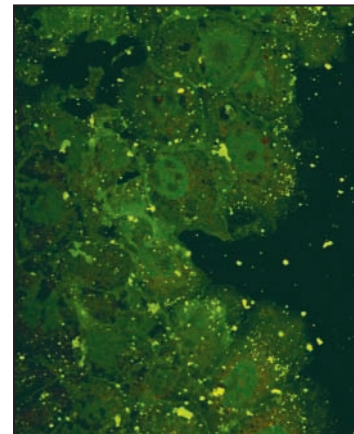
## Corrections

- Correction: Article on *NOTCH1* Mutations in T-Cell Acute Lymphoblastic Leukemia**.....1506
- Correction: Article on Circulating Tumor Cells in Metastatic Prostate Cancer** .....1506

---

## About the Cover

Confocal fluorescence microscopy image of the caveolae-mediated endocytic uptake of cisplatin nanocapsules by IGROV-1 human ovarian carcinoma cells. The core of the nanocapsules was fluorescently labeled with fluoresceinated cisplatin (*green*) and the lipid bilayer coat with a Bodipy 581-modified lipid (*red*). For further details, please see the article by Hamelers and colleagues on page 1259 of this issue.



# Clinical Cancer Research

**15 (4)**

*Clin Cancer Res* 2009;15:1123-1506.

**Updated version** Access the most recent version of this article at:  
<http://clincancerres.aacrjournals.org/content/15/4>

**E-mail alerts** [Sign up to receive free email-alerts](#) related to this article or journal.

**Reprints and Subscriptions** To order reprints of this article or to subscribe to the journal, contact the AACR Publications Department at [pubs@aacr.org](mailto:pubs@aacr.org).

**Permissions** To request permission to re-use all or part of this article, use this link <http://clincancerres.aacrjournals.org/content/15/4>. Click on "Request Permissions" which will take you to the Copyright Clearance Center's (CCC) Rightslink site.