

## CCR Translations

- HER-2, Notch, and Breast Cancer Stem Cells: Targeting an Axis of Evil.** Hasan Korkaya and Max S. Wicha .....1845  
□□ *Commentary on Magnifico et al., p. 2010*

## CCR Practice of Translational Oncology

- HER-2 as a Target for Breast Cancer Therapy.** Michail Ignatiadis, Christine Desmedt, Christos Sotiriou, Evandro de Azambuja, and Martine Piccart .....1848

## Molecular Pathways

- Coordination of DNA Mismatch Repair and Base Excision Repair Processing of Chemotherapy and Radiation Damage for Targeting Resistant Cancers.** Timothy J. Kinsella.....1853
- Neuropilins in Tumor Biology.** Anil Bagri, Marc Tessier-Lavigne, and Ryan J. Watts .....1860

## CCR Special Focus

- From the Editor.** Susan E. Bates .....1865
- Novel Designs and End Points for Phase II Clinical Trials.** Alex A. Adjei, Michaele Christian, and Percy Ivy .....1866
- Alternate Endpoints for Screening Phase II Studies.** Neesha Dhani, Dongsheng Tu, Daniel J. Sargent, Lesley Seymour, and Malcolm J. Moore.....1873
- Randomized Phase II Designs.** Larry Rubinstein, John Crowley, Percy Ivy, Michael LeBlanc, and Dan Sargent .....1883
- Considerations for the Use of Imaging Tools for Phase II Treatment Trials in Oncology.** Lalitha K. Shankar, Annick Van den Abbeele, Jeff Yap, Robert Benjamin, Scott Scheutze, and T.J. FitzGerald .....1891
- Effective Incorporation of Biomarkers into Phase II Trials.** Lisa M. McShane, Sally Hunsberger, and Alex A. Adjei .....1898

## Review

- Screening for Pancreatic Cancer in High-Risk Individuals: A Call for Endoscopic Ultrasound.** Alberto Larghi, Elizabeth C. Verna, Piera Giuseppina Lecca, and Guido Costamagna.....1907

## Human Cancer Biology

- MicroRNA-21 Regulates the Proliferation and Invasion in Esophageal Squamous Cell Carcinoma.** Yukiharu Hiyoshi, Hidenobu Kamohara, Ryuichi Karashima, Nobutaka Sato, Yu Imamura, Youhei Nagai, Naoya Yoshida, Eiichiro Toyama, Naoko Hayashi, Masayuki Watanabe, and Hideo Baba .....1915
- Genomic Analysis Using High-Density Single Nucleotide Polymorphism-Based Oligonucleotide Arrays and Multiplex Ligation-Dependent Probe Amplification Provides a Comprehensive Analysis of *INI1/SMARCB1* in Malignant Rhabdoid Tumors.** Eric M. Jackson, Angela J. Sievert, Xiaowu Gai, Hakon Hakonarson, Alexander R. Judkins, Laura Tooke, Juan Carlos Perin, Hongbo Xie, Tamim H. Shaikh, and Jaclyn A. Biegel .....1923
- Evidence of Systemic Th2-Driven Chronic Inflammation in Patients with Metastatic Melanoma.** Wendy K. Nevala, Celine M. Vachon, Alexey A. Leontovich, Christopher G. Scott, Michael A. Thompson, and Svetomir N. Markovic for the Melanoma Study Group of the Mayo Clinic Cancer Center.....1931

<b>Aberrant Hyperactivation of Akt and Mammalian Target of Rapamycin Complex 1 Signaling in Sporadic Chordomas.</b> Sangyeul Han, Carolyn Polizzano, Gunnlaugur P. Nielsen, Francis J. Hornicek, Andrew E. Rosenberg, and Vijaya Ramesh .....	1940
---	------

## Cancer Therapy: Preclinical

<b>Effective Prostate Cancer Chemopreventive Intervention with Green Tea Polyphenols in the TRAMP Model Depends on the Stage of the Disease.</b> Vaqar Mustafa Adhami, Imtiaz Ahmad Siddiqui, Sami Sarfaraz, Sabih Islam Khwaja, Bilal Bin Hafeez, Nihal Ahmad, and Hasan Mukhtar .....	1947
<b>Sperm-Derived SPANX-B Is a Clinically Relevant Tumor Antigen That Is Expressed in Human Tumors and Readily Recognized by Human CD4<sup>+</sup> and CD8<sup>+</sup> T Cells.</b> Giovanni Almanzar, Purevdorj B. Olkhanud, Monica Bodogai, Chiara Dell'Agnola, Dolgor Baatar, Stephen M. Hewitt, Claudio Ghimenton, Mohan K. Tummala, Ashani T. Weeraratna, Keith Sean Hoek, Natalay Kouprina, Vladimir Larionov, and Arya Biragyn .....	1954
<b>Novel Dithiolethione-Modified Nonsteroidal Anti-Inflammatory Drugs in Human Hepatoma HepG2 and Colon LS180 Cells.</b> Sara E. Bass, Pawel Sienkiewicz, Christopher J. MacDonald, Robert Y.S. Cheng, Anna Sparatore, Piero Del Soldato, David D. Roberts, Terry W. Moody, David A. Wink, and Grace Chao Yeh .....	1964
<b>Tumor-Targeted Nanomedicines: Enhanced Antitumor Efficacy <i>In vivo</i> of Doxorubicin-Loaded, Long-Circulating Liposomes Modified with Cancer-Specific Monoclonal Antibody.</b> Tamer A. ElBayoumi and Vladimir P. Torchilin .....	1973
<b>Neamine Inhibits Prostate Cancer Growth by Suppressing Angiogenin-Mediated rRNA Transcription.</b> Soichiro Ibaragi, Norie Yoshioka, Shuping Li, Miaofen G. Hu, Saori Hirukawa, Peter M. Sadow, and Guo-fu Hu .....	1981
<b>Pathologic Correlates of Primary Central Nervous System Lymphoma Defined in an Orthotopic Xenograft Model.</b> Cigall Kadoch, Eduard B. Dinca, Ramona Voicu, Lingjing Chen, Diana Nguyen, Seema Parikh, Juliana Karrim, Marc A. Shuman, Clifford A. Lowell, Patrick A. Treseler, C. David James, and James L. Rubenstein .....	1989
<b>Apo2L/TRAIL Inhibits Tumor Growth and Bone Destruction in a Murine Model of Multiple Myeloma.</b> Agatha Labrinidis, Peter Diamond, Sally Martin, Shelley Hay, Vasilios Liapis, Irene Zinonos, Natalie A. Sims, Gerald J. Atkins, Cristina Vincent, Vladimir Ponomarev, David M. Findlay, Andrew C.W. Zannettino, and Andreas Evdokiou .....	1998
<b>Tumor-Initiating Cells of HER2-Positive Carcinoma Cell Lines Express the Highest Oncoprotein Levels and Are Sensitive to Trastuzumab.</b> Alessandra Magnifico, Luisa Albano, Stefano Campaner, Domenico Delia, Fabio Castiglioni, Patrizia Gasparini, Gabriella Sozzi, Enrico Fontanella, Sylvie Menard, and Elda Tagliabue .....	2010
<b>The Topoisomerase I Poison CPT-11 Enhances the Effect of the Aurora B Kinase Inhibitor AZD1152 both <i>In vitro</i> and <i>In vivo</i>.</b> Jayasree S. Nair, Elisa de Stanchina, and Gary K. Schwartz .....	2022
<b>Combining Radiotherapy with APO010 in Cancer Treatment.</b> Inge Verbrugge, Esther H.J. Wissink, Rogier W. Rooswinkel, Johan Jongsma, Nicola Beltraminelli, Marc Dupuis, Jannie Borst, and Marcel Verheij .....	2031
<b>Enhancement of Lexatumumab-Induced Apoptosis in Human Solid Cancer Cells by Cisplatin in Caspase-Dependent Manner.</b> Xiu-Xian Wu and Yoshiyuki Takechi .....	2039
<b>Enhanced Antitumor Efficacy of a DR5-Specific TRAIL Variant over Recombinant Human TRAIL in a Bioluminescent Ovarian Cancer Xenograft Model.</b> Evelien W. Duiker, Elisabeth G.E. de Vries, Devalingam Mahalingam, Gert Jan Meersma, Wytske Boersma-van Ek, Harry Hollema, Marjolijn N. Lub-de Hooge, Go M. van Dam, Robbert H. Cool, Wim J. Quax, Afshin Samali, Ate G.J. van der Zee, and Steven de Jong .....	2048

---

<b>Resistance to Chemotherapy Is Associated with Fibroblast Growth Factor Receptor 4 Up-Regulation.</b> Andreas Roidl, Hans-Jürgen Berger, Sushil Kumar, Johannes Bange, Pjotr Knyazev, and Axel Ullrich .....	2058
--	------

## Imaging, Diagnosis, Prognosis

<b>Quantitative Ultrasound Characterization of Responses to Radiotherapy in Cancer Mouse Models.</b> Roxana M. Vlad, Sebastian Brand, Anoja Giles, Michael C. Kolios, and Gregory J. Czarnota .....	2067
<b>Single-Molecule Detection of Epidermal Growth Factor Receptor Mutations in Plasma by Microfluidics Digital PCR in Non-Small Cell Lung Cancer Patients.</b> Tony K.F. Yung, K.C. Allen Chan, Tony S.K. Mok, Joanna Tong, Ka-Fai To, and Y.M. Dennis Lo .....	2076
<b>Heterogeneity of the MYCN Oncogene in Neuroblastoma.</b> Jessica Theissen, Marc Boensch, Ruediger Spitz, David Betts, Sabine Stegmaier, Holger Christiansen, Felix Niggli, Freimut Schilling, Manfred Schwab, Thorsten Simon, Frank Westermann, Frank Berthold, and Barbara Hero .....	2085
<b>Fluorescence <i>In situ</i> Hybridization Analysis of Circulating Tumor Cells in Metastatic Prostate Cancer.</b> Margaret A. Leversha, Jialian Han, Zahra Asgari, Daniel C. Danila, Oscar Lin, Rita Gonzalez-Espinoza, Aseem Anand, Hans Lilja, Glenn Heller, Martin Fleisher, and Howard I. Scher .....	2091
<b>Coassociation of Estrogen Receptor and p160 Proteins Predicts Resistance to Endocrine Treatment; SRC-1 is an Independent Predictor of Breast Cancer Recurrence.</b> Aisling M. Redmond, Fiona T. Bane, Anthony T. Stafford, Marie McIlroy, Mary F. Dillon, Thomas B. Crotty, Arnold D. Hill, and Leonie S. Young .....	2098

## Cancer Therapy: Clinical

<b>Interaction between <i>BCL2</i> and <i>Interleukin-10</i> Gene Polymorphisms Alter Outcomes of Diffuse Large B-Cell Lymphoma following Rituximab Plus CHOP Chemotherapy.</b> Yeon Hee Park, Sang Kyun Sohn, Jong Gwang Kim, Myung-Hoon Lee, Hong Suk Song, Min Kyoung Kim, Joo Seop Jung, Je-Joong Lee, Hyeoung Joon Kim, and Dong Hwan Kim .....	2107
<b>p27<sup>Kip1</sup> in Stage III Colon Cancer: Implications for Outcome following Adjuvant Chemotherapy in Cancer and Leukemia Group B Protocol 89803.</b> Monica M. Bertagnolli, Robert S. Warren, Donna Niedzwiecki, Elke Mueller, Carolyn C. Compton, Mark Redston, Margaret Hall, Hejin P. Hahn, Scott D. Jewell, Robert J. Mayer, Richard M. Goldberg, Leonard B. Saltz, and Massimo Loda .....	2116
<b>Clinical and Biological Efficacy of Recombinant Human Interleukin-21 in Patients with Stage IV Malignant Melanoma without Prior Treatment: A Phase IIa Trial.</b> Ian D. Davis, Ben Brady, Richard F. Kefford, Michael Millward, Jonathan Cebon, Birte K. Skrumsager, Ulrik Mouritzen, Lasse Tengbjerg Hansen, Kresten Skak, Dorthe Lundsgaard, Klaus Stensgaard Frederiksen, Paul E.G. Kristjansen, and Grant McArthur .....	2123
<b>NY-ESO-1 DNA Vaccine Induces T-Cell Responses That Are Suppressed by Regulatory T Cells.</b> Sacha Gnjjatic, Nasser K. Altorki, Derek Ng Tang, Shi-Ming Tu, Vikas Kundra, Gerd Ritter, Lloyd J. Old, Christopher J. Logothetis, and Padmanee Sharma .....	2130
<b>Phase I Study of Sequence-Selective Minor Groove DNA Binding Agent SJG-136 in Patients with Advanced Solid Tumors.</b> Daniel Hochhauser, Timothy Meyer, Victoria J. Spanswick, Jenny Wu, Peter H. Clingen, Paul Loadman, Margaret Cobb, Lindsey Gumbrell, Richard H. Begent, John A. Hartley, and Duncan Jodrell .....	2140
<b>Sunitinib Mediates Reversal of Myeloid-Derived Suppressor Cell Accumulation in Renal Cell Carcinoma Patients.</b> Jennifer S. Ko, Arnold H. Zea, Brian I. Rini, Joanna L. Ireland, Paul Elson, Peter Cohen, Ali Golshayan, Patricia A. Rayman, Laura Wood, Jorge Garcia, Robert Dreicer, Ronald Bukowski, and James H. Finke .....	2148
<b>A Phase II Study of Celecoxib in Combination with Paclitaxel, Carboplatin, and Radiotherapy for Patients with Inoperable Stage IIIA/B Non-Small Cell Lung Cancer.</b> Robert Mutter, Bo Lu, David P. Carbone, Ildiko Csiki, Luigi Moretti, David H. Johnson, Jason D. Morrow, Alan B. Sandler, Yu Shyr, Fei Ye, and Hak Choy .....	2158

---

<b>Regulatory T-Cell–Mediated Attenuation of T-Cell Responses to the NY-ESO-1 ISCOMATRIX Vaccine in Patients with Advanced Malignant Melanoma.</b> Theo Nicolaou, Lisa M. Ebert, Ian D. Davis, Grant A. McArthur, Heather Jackson, Nektaria Dimopoulos, Bee Tan, Eugene Maraskovsky, Lena Miloradovic, Wendie Hopkins, Linda Pan, Ralph Venhaus, Eric W. Hoffman, Weisan Chen, and Jonathan Cebon.....	<b>2166</b>
<b>Expression of Immunosuppressive B7-H3 Ligand by Hormone-Treated Prostate Cancer Tumors and Metastases.</b> Grant Chavin, Yuri Sheinin, Paul L. Crispen, Stephen A. Boorjian, Timothy J. Roth, Laureano Rangel, Michael L. Blute, Thomas J. Sebo, Don J. Tindall, Eugene D. Kwon, and R. Jeffrey Karnes .....	<b>2174</b>

## Susceptibility and Prevention

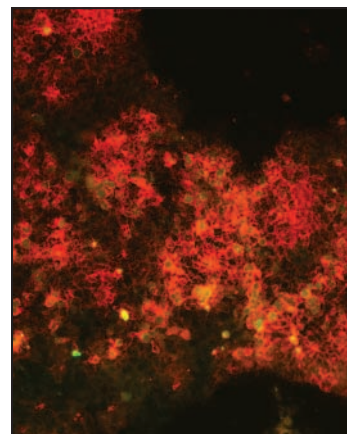
---

<b>Common Polymorphisms in the Prostaglandin Pathway Genes and Their Association with Breast Cancer Susceptibility and Survival.</b> Jean E. Abraham, Patricia Harrington, Kristy E. Driver, Jonathan Tyrer, Douglas F. Easton, Alison M. Dunning, and Paul D.P. Pharoah .....	<b>2181</b>
<b>Associations between Single Nucleotide Polymorphisms in Double-Stranded DNA Repair Pathway Genes and Familial Breast Cancer.</b> Mary E. Sehl, Lucy R. Langer, Jeanette C. Papp, Lorna Kwan, Joyce L. Seldon, Geovanni Arellano, Jean Reiss, Elaine F. Reed, Sugandha Dandekar, Yael Korin, Janet S. Sinsheimer, Zuo-Feng Zhang, and Patricia A. Ganz.....	<b>2192</b>

---

## About the Cover

Alternatively activated M2 macrophages in xenograft model of CNS lymphoma. Fluorescently labeled antibodies were used to show the presence of intratumoral M2 macrophages using anti-CD11b (Alexa Fluor 594, *red*) and anti-Ym1 (Alexa Fluor 488, *green*) antibodies. The merged image indicates M2 macrophages exhibiting cytoplasmic expression of Ym-1. For further details, please see Kadoch and coworkers on page 1989 in this issue.



# Clinical Cancer Research

**15 (6)**

*Clin Cancer Res* 2009;15:1845-2203.

**Updated version** Access the most recent version of this article at:  
<http://clincancerres.aacrjournals.org/content/15/6>

**E-mail alerts** [Sign up to receive free email-alerts](#) related to this article or journal.

**Reprints and Subscriptions** To order reprints of this article or to subscribe to the journal, contact the AACR Publications Department at [pubs@aacr.org](mailto:pubs@aacr.org).

**Permissions** To request permission to re-use all or part of this article, use this link <http://clincancerres.aacrjournals.org/content/15/6>. Click on "Request Permissions" which will take you to the Copyright Clearance Center's (CCC) Rightslink site.