

Highlights of This Issue vii

SPECIAL FEATURES

CCR Translations

- 1 | **Evaluating a Marker's Contribution to a Nomogram: The GEMCaP Example**
Michael W. Kattan
See article p. 195

Molecular Pathways

- 4 | **The Role of the Akt/mTOR Pathway in Tobacco Carcinogen-Induced Lung Tumorigenesis**
Regan M. Memmott
and Phillip A. Dennis

Review

- 11 | **Immunotherapy of Malignant Disease with Tumor Antigen-Specific Monoclonal Antibodies**
Michael Campoli, Robert Ferris,
Soldano Ferrone, and Xinhui Wang

HUMAN CANCER BIOLOGY

- 21 | **Three DNA Methylation Epigenotypes in Human Colorectal Cancer**
Koichi Yagi, Kiwamu Akagi,
Hiroshi Hayashi, Genta Nagae,
Shingo Tsuji, Takayuki Isagawa,
Yutaka Midorikawa, Yoji Nishimura,
Hirohiko Sakamoto, Yasuyuki Seto,
Hiroyuki Aburatani,
and Atsushi Kaneda
- 34 | **Expression of Interleukin-1 Receptor-Associated Kinase-1 in Non-Small Cell Lung Carcinoma and Preneoplastic Lesions**
Carmen Behrens, Lei Feng,
Humam Kadara, Hyun-Jung Kim,
J. Jack Lee, Reza Mehran,
Waun Ki Hong, Reuben Lotan,
and Ignacio I. Wistuba

- 45 | **Aldehyde Dehydrogenase 1-Positive Cancer Stem Cells Mediate Metastasis and Poor Clinical Outcome in Inflammatory Breast Cancer**
Emmanuelle Charafe-Jauffret,
Christophe Ginestier, Flora Iovino,
Carole Tarpin, Mark Diebel,
Benjamin Esterni, Gilles Houvenaeghel,
Jean-Marc Extra, François Bertucci,
Jocelyne Jacquemier, Luc Xerri,
Gabriela Dontu, Giorgio Stassi, Yi Xiao,
Sanford H. Barsky, Daniel Bimbaum,
Patrice Viens, and Max S. Wicha

- 56 | **Chromosome 8p Deletions and 8q Gains are Associated with Tumor Progression and Poor Prognosis in Prostate Cancer**
Alexander T. El Gammal,
Michael Brüchmann, Jozef Zustin,
Hendrik Isbarn, Olaf J.C. Hellwinkel,
Jens Köllermann, Guido Sauter,
Ronald Simon, Waldemar Wilczak,
Jörg Schwarz, Carsten Bokemeyer,
Tim H. Brümmendorf, Jakob R. Izbicki,
Emre Yekebas, Margit Fisch,
Hartwig Huland, Markus Graefen,
and Thorsten Schlomm

- 65 | **Rap1 Stabilizes β -Catenin and Enhances β -Catenin-Dependent Transcription and Invasion in Squamous Cell Carcinoma of the Head and Neck**
Mitsuo Goto, Raj S. Mitra, Min Liu,
Julia Lee, Bradley S. Henson,
Thomas Carey, Carol Bradford,
Mark Prince, Cun-Yu Wang,
Eric R. Fearon, and Nisha J. D'Silva

- 77 | **Inhibitor of Differentiation 1 Contributes to Head and Neck Squamous Cell Carcinoma Survival via the NF- κ B/Survivin and Phosphoinositide 3-Kinase/Akt Signaling Pathway**
Jizhen Lin, Zhong Guan, Chuan Wang,
Ling Feng, Yiqing Zheng,
Emiro Caicedo, Ellalane Bearth,
Jie-Ren Peng, Patrick Gaffney,
and Frank G. Ondrey

88 **Mining Tissue Microarray Data to Uncover Combinations of Biomarker Expression Patterns that Improve Intermediate Staging and Grading of Clear Cell Renal Cell Cancer**
Corinne Dahinden, Barbara Ingold, Peter Wild, Gunther Boysen, Van-Duc Luu, Matteo Montani, Glen Kristiansen, Tullio Sulser, Peter Bühlmann, Holger Moch, and Peter Schraml

141 **Vorinostat Enhances the Activity of Temsirolimus in Renal Cell Carcinoma Through Suppression of Survivin Levels**
Devalingam Mahalingam, Ernest C. Medina, Juan A. Esquivel II, Claudia M. Espitia, Sabrina Smith, Kelli Oberheu, Ronan Swords, Kevin R. Kelly, Monica M. Mita, Alain C. Mita, Jennifer S. Carew, Francis J. Giles, and Steffan T. Nawrocki

CANCER THERAPY: PRECLINICAL

99 **A High-Throughput Pharmaceutical Screen Identifies Compounds with Specific Toxicity against BRCA2-Deficient Tumors**
Bastiaan Evers, Eva Schut, Eline van der Burg, Tanya M. Braumuller, David A. Egan, Henne Holstege, Pauline Edser, David J. Adams, Richard Wade-Martins, Peter Bouwman, and Jos Jonkers

109 **Targeting the Cyclin E-Cdk-2 Complex Represses Lung Cancer Growth by Triggering Anaphase Catastrophe**
Fabrizio Galimberti, Sarah L. Thompson, Xi Liu, Hua Li, Vincent Memoli, Simon R. Green, James DiRenzo, Patricia Greninger, Sreenath V. Sharma, Jeff Settleman, Duane A. Compton, and Ethan Dmitrovsky

121 **Targeting of Bone-Derived Insulin-Like Growth Factor-II by a Human Neutralizing Antibody Suppresses the Growth of Prostate Cancer Cells in a Human Bone Environment**
Taichi Kimura, Takeshi Kuwata, Satoshi Ashimine, Manabu Yamazaki, Chisako Yamauchi, Kanji Nagai, Akashi Ikehara, Yang Feng, Dimiter S. Dimitrov, Seiichi Saito, and Atsushi Ochiai

130 **P-glycoprotein (P-gp/Abcb1), Abcc2, and Abcc3 Determine the Pharmacokinetics of Etoposide**
Jurjen S. Lagas, Lin Fan, Els Wagenaar, Maria L.H. Vlaming, Olaf van Tellingen, Jos H. Beijnen, and Alfred H. Schinkel

154 **The Telomerase Antagonist, Imetelstat, Efficiently Targets Glioblastoma Tumor-Initiating Cells Leading to Decreased Proliferation and Tumor Growth**
Calin O. Marian, Steve K. Cho, Brian M. Mcellin, Elizabeth A. Maher, Kimmo J. Hatanpaa, Christopher J. Madden, Bruce E. Mickey, Woodring E. Wright, Jerry W. Shay, and Robert M. Bachoo

164 **Immunotherapy for Human Renal Cell Carcinoma by Adoptive Transfer of Autologous Transforming Growth Factor β -Insensitive CD8⁺ T Cells**
Longxin Wang, Weihong Wen, Jianlin Yuan, Brian Helfand, Yu Li, Changhong Shi, Feng Tian, Jia Zheng, Fuli Wang, Lin Chen, Lili Liang, Liqun Zhou, Chung Lee, Zhinan Chen, Yinglu Guo, He Wang, Qiang Zhang, and Weijun Qin

174 **Hepatocyte Growth Factor Reduces Susceptibility to an Irreversible Epidermal Growth Factor Receptor Inhibitor in EGFR-T790M Mutant Lung Cancer**
Tadaaki Yamada, Kunio Matsumoto, Wei Wang, Qi Li, Yasuhiko Nishioka, Yoshitaka Sekido, Saburo Sone, and Seiji Yano

184 **c-Jun-NH₂-kinase-1 Inhibition Leads to Antitumor Activity in Ovarian Cancer**
Pablo Vivas-Mejia, Juliana Maria Benito, Ariel Fernandez, Hee-Dong Han, Lingegowda Mangala, Cristian Rodriguez-Aguayo, Arturo Chavez-Reyes, Yvonne G. Lin, Mark S. Carey, Alpa M. Nick, Rebecca L. Stone, Hye Sun Kim, Francois-Xavier Claret, William Bornmann, Bryan T.J. Hennessy, Angela Sanguino, Zhengong Peng, Anil K. Sood, and Gabriel Lopez-Berestein

IMAGING, DIAGNOSIS, PROGNOSIS

CANCER THERAPY: CLINICAL

195 **A Group of Genome-Based Biomarkers That Add to a Kattan Nomogram for Predicting Progression in Men with High-Risk Prostate Cancer**
 Pamela L. Paris, Vivian Weinberg, Giancarlo Albo, Ritu Roy, Catherine Burke, Jeffrey Simko, Peter Carroll, and Colin Collins

203 **Prediction of Survival following First-Line Chemotherapy in Men with Castration-Resistant Metastatic Prostate Cancer**
 Andrew J. Armstrong, Elizabeth Garrett-Mayer, Ronald de Wit, Ian Tannock, and Mario Eisenberger

212 **Quantified Tumor T1 Is a Generic Early-Response Imaging Biomarker for Chemotherapy Reflecting Cell Viability**
 Paul M.J. McSheehy, Claudia Weidensteiner, Catherine Cagnet, Stephane Ferretti, Didier Laurent, Stephan Ruetz, Michael Stumm, and Peter R. Allegrini

226 **Activation of WD Repeat and High-Mobility Group Box DNA Binding Protein 1 in Pulmonary and Esophageal Carcinogenesis**
 Nagato Sato, Junkichi Koinuma, Masahiro Fujita, Masao Hosokawa, Tomoo Ito, Eiju Tsuchiya, Satoshi Kondo, Yusuke Nakamura, and Yataro Daigo

240 **Overexpression of Phospho-eIF4E Is Associated with Survival through AKT Pathway in Non-Small Cell Lung Cancer**
 Akihiko Yoshizawa, Junya Fukuoka, Shigeki Shimizu, Konstantin Shilo, Teri J. Franks, Stephen M. Hewitt, Takeshi Fujii, Carlos Cordon-Cardo, Jin Jen, and William D. Travis

249 **Expression Signature Developed from a Complex Series of Mouse Models Accurately Predicts Human Breast Cancer Survival**
 Mei He, David P. Mangiameli, Stefan Kachala, Kent Hunter, John Gillespie, Xiaopeng Bian, H.-C. Jennifer Shen, and Steven K. Libutti

260 **SPARC Is Associated with Gastric Cancer Progression and Poor Survival of Patients**
 Zhong-Sheng Zhao, Yuan-Yu Wang, Yong-Quan Chu, Zai-Yuan Ye, and Hou-Quan Tao

269 **Bevacizumab Safety in Patients with Central Nervous System Metastases**
 Benjamin Besse, Susan F. Lasserre, Peter Compton, Jane Huang, Stella Augustus, and Ulrich-Peter Rohr

279 **Phase 1b Study of Motesanib, an Oral Angiogenesis Inhibitor, in Combination with Carboplatin/Paclitaxel and/or Panitumumab for the Treatment of Advanced Non-Small Cell Lung Cancer**
 George R. Blumenschein, Jr., Karen Reckamp, G. Joe Stephenson, Timothy O'Rourke, Gregory Gladish, Jesse McGreiv, Yu-Nien Sun, Yining Ye, Mandy Parson, and Alan Sandler

291 **Somatic EGFR Mutation and Gene Copy Gain as Predictive Biomarkers for Response to Tyrosine Kinase Inhibitors in Non-Small Cell Lung Cancer**
 Issa J. Dahabreh, Helena Linardou, Fotios Siannis, Paris Kosmidis, Dimitrios Bafaloukos, and Samuel Murray

304 **Association of Epidermal Growth Factor Receptor Polymorphism, Skin Toxicity, and Outcome in Patients with Squamous Cell Carcinoma of the Head and Neck Receiving Cetuximab-Docetaxel Treatment**
 Konrad Klinghammer, Maren Knödler, Alexander Schmittel, Volker Budach, Ulrich Keilholz, and Ingeborg Tinhofer

311 **Phase I Study of the Angiogenesis Inhibitor BIBF 1120 in Patients with Advanced Solid Tumors**
 Klaus Mross, Martin Stefanic, Daniela Gmehling, Annette Frost, Franziska Baas, Clemens Unger, Ralph Strecker, Jürgen Henning, Birgit Gaschler-Markefski, Peter Stopfer, Lothar de Rossi, and Rolf Kaiser

320 **Single Nucleotide Polymorphisms of Gemcitabine Metabolic Genes and Pancreatic Cancer Survival and Drug Toxicity**
 Taro Okazaki, Milind Javle, Motofumi Tanaka, James L. Abbruzzese, and Donghui Li

330 **Microarray-Based Response Prediction in Esophageal Adenocarcinoma**
 Matthias Schauer, Klaus-Peter Janssen, Caroline Rimkus, Matthias Raggi, Marcus Feith, Helmut Friess, and Joerg Theisen

338 **K562/GM-CSF Immunotherapy Reduces Tumor Burden in Chronic Myeloid Leukemia Patients with Residual Disease on Imatinib Mesylate**

B. Douglas Smith, Yvette L. Kasamon, Jeanne Kowalski, Christopher Gocke, Kathleen Murphy, Carole B. Miller, Elizabeth Garrett-Mayer, Hua-Ling Tsai, Lu Qin, Christina Chia, Barbara Biedrzycki, Thomas C. Harding, Guang Haun Tu, Richard Jones, Kristen Hege, and Hyam I. Levitsky

348 **A Phase I Trial of Bortezomib with Temozolomide in Patients with Advanced Melanoma: Toxicities, Antitumor Effects, and Modulation of Therapeutic Targets**

Yingjun Su, Katayoun I. Amiri, Linda W. Horton, Yingchun Yu, Gregory D. Ayers, Elizabeth Koehler, Mark C. Kelley, Igor Puzanov, Ann Richmond, and Jeffrey A. Sosman

358 **Phase 1 Study of Aflibercept Administered Subcutaneously to Patients with Advanced Solid Tumors**

William P. Tew, Michael Gordon, John Murren, Jakob Dupont, Sandra Pezzulli, Carol Aghajanian, Paul Sabbatini, David Mendelson, Lawrence Schwartz, Scott Gettinger, Amanda Psyrrri, Jesse M. Cedarbaum, and David R. Spriggs

LETTERS TO THE EDITOR

367 **Decreased Blood Flow with Increased Metabolic Activity: A Novel Sign of Pancreatic Tumor Aggressiveness**

Nghi C. Nguyen, Khaled Taalab, and Medhat M. Osman

368 **In Response**

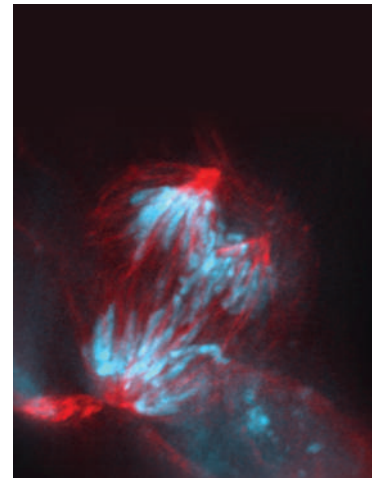
Gaber Komar, Saila Kauhanen, Pirjo Nuutila, and Heikki Minn

CORRECTION

369 **Correction: Blockade of MGMT Expression by O⁶ Benzyl Guanine Leads to Inhibition of Pancreatic Cancer Growth and Induction of Apoptosis**

ABOUT THE COVER

Targeting Cdk-2 in lung cancer was found to engage a previously unrecognized mechanism: induced anaphase catastrophe. This triggers apoptosis in lung cancer cells. The immunofluorescent image of a representative lung cancer cell is shown following small interfering RNA targeting of Cdk-2. In this image, microtubules are displayed in red and DNA in blue within a multipolar lung cancer cell undergoing anaphase catastrophe. For further details, please see the article by Galimberti and colleagues on page 109 of this issue.



Clinical Cancer Research

16 (1)

Clin Cancer Res 2010;16:1-369.

Updated version Access the most recent version of this article at:
<http://clincancerres.aacrjournals.org/content/16/1>

E-mail alerts [Sign up to receive free email-alerts](#) related to this article or journal.

Reprints and Subscriptions To order reprints of this article or to subscribe to the journal, contact the AACR Publications Department at pubs@aacr.org.

Permissions To request permission to re-use all or part of this article, use this link <http://clincancerres.aacrjournals.org/content/16/1>. Click on "Request Permissions" which will take you to the Copyright Clearance Center's (CCC) Rightslink site.