

Highlights of This Issue 2697

SPECIAL FEATURES

CCR Translations

- 2699 | **Epigenetic Markers in Rectal Cancer**
Lei Xu, Brian G. Czito, and
Christopher G. Willett
See article p. 2811

Molecular Pathways

- 2702 | **Estrogen Receptor Mutations and Changes in Downstream Gene Expression and Signaling**
Ines Barone, Lauren Brusco,
and Suzanne A.W. Fuqua
- 2709 | **Integration of Epidermal Growth Factor Receptor Inhibitors with Preoperative Chemoradiation**
Annelies Debucquoy, Jean-Pascal Machiels,
William H. McBride, and Karin Haustermans

HUMAN CANCER BIOLOGY

- 2715 | **Differentiation Therapy Exerts Antitumor Effects on Stem-like Glioma Cells**
Benito Campos, Feng Wan,
Mohammad Farhadi, Aurélie Ernst,
Felix Zeppernick, Katrin E. Tagscherer,
Rezvan Ahmadi, Jennifer Lohr,
Christine Dictus, Georg Gdynia,
Stephanie E. Combs, Violaine Goidts,
Burkhard M. Helmke, Volker Eckstein,
Wilfried Roth, Philipp Beckhove,
Peter Lichter, Andreas Unterberg,
Bernhard Radlwimmer,
and Christel Herold-Mende
- 2729 | **Graft-versus-Leukemia Antigen CML66 Elicits Coordinated B-Cell and T-Cell Immunity after Donor Lymphocyte**
Wandi Zhang, Jaewon Choi, Wanyong Zeng,
Shelby A. Rogers, Edwin P. Alyea,
James G. Rheinwald, Christine M. Canning,
Vladimir Brusic, Tetsuro Sasada,
Ellis L. Reinherz, Jerome Ritz,
Robert J. Soiffer, and Catherine J. Wu

- 2740 | **Activation of β -Catenin by Hypoxia in Hepatocellular Carcinoma Contributes to Enhanced Metastatic Potential and Poor Prognosis**
Liang Liu, Xiao-Dong Zhu, Wen-Quan Wang,
Yuan Shen, Yi Qin, Zheng-Gang Ren,
Hui-Chuan Sun, and Zhao-You Tang

- 2751 | **DNMT3L Is a Novel Marker and Is Essential for the Growth of Human Embryonal Carcinoma**
Kahori Minami, Tokuhiro Chano,
Takahiro Kawakami, Hiroshi Ushida,
Ryoji Kushima, Hidetoshi Okabe,
Yusaku Okada, and Keisei Okamoto

CANCER THERAPY: PRECLINICAL

- 2760 | **Efficacy, Biodistribution, and Pharmacokinetics of CD22-Targeted Pegylated Liposomal Doxorubicin in a B-cell Non-Hodgkin's Lymphoma Xenograft Mouse Model**
Joseph M. Tuscano, Shiloh M. Martin,
Yunpeng Ma, William Zamboni,
and Robert T. O'Donnell
- 2769 | **Anti-GD3 Chimeric sFv-CD28/T-Cell Receptor ζ Designer T Cells for Treatment of Metastatic Melanoma and Other Neuroectodermal Tumors**
Agnes S.Y. Lo, Qiangzhong Ma,
David L. Liu, and Richard P. Junghans
- 2781 | **Two Distinct Mechanisms of Augmented Antitumor Activity by Modulation of Immunostimulatory/Inhibitory Signals**
Jun Mitsui, Hiroyoshi Nishikawa,
Daisuke Muraoka, Linan Wang,
Takuro Noguchi, Eiichi Sato,
Satoshi Kondo, James P. Allison,
Shimon Sakaguchi, Lloyd J. Old,
Takuma Kato, and Hiroshi Shiku
- 2792 | **New Molecular and Biological Mechanism of Antitumor Activities of KW-2478, a Novel Nonansamycin Heat Shock Protein 90 Inhibitor, in Multiple Myeloma Cells**
Takayuki Nakashima, Toshihiko Ishii,
Hisashi Tagaya, Toshihiro Seike,
Hiroshi Nakagawa, Yutaka Kanda,
Shiro Akinaga, Shiro Soga,
and Yukimasa Shiotsu

IMAGING, DIAGNOSIS, PROGNOSIS

- 2803 **Tumor Metabolism and Blood Flow as Assessed by Positron Emission Tomography Varies by Tumor Subtype in Locally Advanced Breast Cancer**
Jennifer M. Specht, Brenda F. Kurland, Susan K. Montgomery, Lisa K. Dunnwald, Robert K. Doot, Julie R. Gralow, Georgina K. Ellis, Hannah M. Linden, Robert B. Livingston, Kimberly H. Allison, Erin K. Schubert, and David A. Mankoff
- 2811 **Identification of a Quantitative MINT Locus Methylation Profile Predicting Local Regional Recurrence of Rectal Cancer**
Michiel F.G. de Maat, Cornelis J.H. van de Velde, Anne Benard, Hein Putter, Hans Morreau, J. Han J.M. van Krieken, Elma Meershoek Klein-Kranenburg, Eelco J. de Graaf, Rob A.E.M. Tollenaar, and Dave S.B. Hoon
See commentary p. 2699
- 2819 **Susceptibility Loci Associated with Prostate Cancer Progression and Mortality**
David J. Gallagher, Joseph Vijai, Angel M. Cronin, Jasmine Bhatia, Andrew J. Vickers, Mia M. Gaudet, Samson Fine, Victor Reuter, Howard I. Scher, Christer Halldén, Ana Dutra-Clarke, Robert J. Klein, Peter T. Scardino, James A. Eastham, Hans Lilja, Tomas Kirchhoff, and Kenneth Offit
- 2833 **Near IR Heptamethine Cyanine Dye-Mediated Cancer Imaging**
Xiaojian Yang, Chunmeng Shi, Rong Tong, Weiping Qian, Haiyen E. Zhou, Ruoxiang Wang, Guodong Zhu, Jianjun Cheng, Vincent W. Yang, Tianmin Cheng, Maged Henary, Lucjan Strekowski, and Leland W.K. Chung
- 2845 **Association of SPINK1 Expression and TMPRSS2:ERG Fusion with Prognosis in Endocrine-Treated Prostate Cancer**
Katri A. Leinonen, Teemu T. Tolonen, Hazel Bracken, Ulf-Håkan Stenman, Teuvo L.J. Tammela, Outi R. Saramäki, and Tapio Visakorpi

CANCER THERAPY: CLINICAL

- 2852 **Functional Proteomic Analysis of Advanced Serous Ovarian Cancer Using Reverse Phase Protein Array: TGF- β Pathway Signaling Indicates Response to Primary Chemotherapy**
Mark S. Carey, Roshan Agarwal, Blake Gilks, Kenneth Swenerton, Steve Kalloger, Jennifer Santos, Zhenlin Ju, Yiling Lu, Fan Zhang, Kevin R. Coombes, Dianne Miller, David Huntsman, Gordon B. Mills, and Bryan T. Hennessy
- 2861 **Preoperative CTLA-4 Blockade: Tolerability and Immune Monitoring in the Setting of a Presurgical Clinical Trial**
Bradley C. Carthon, Jedd D. Wolchok, Jianda Yuan, Ashish Kamat, Derek S. Ng Tang, Jingjing Sun, Geoffrey Ku, Patricia Troncoso, Christopher J. Logothetis, James P. Allison, and Padmanee Sharma
- 2872 **Pemetrexed Safety and Pharmacokinetics in Patients with Third-Space Fluid**
Nicolas J. Dickgreber, Jens Benn Sorensen, Luis G. Paz-Ares, Tine Kjestrup Schytte, Jane E. Latz, Karen B. Schneck, Zheng Yuan, and José Miguel Sanchez-Torres
- 2881 **Phase I Open-Label Study of Continuous Treatment with BIBF 1120, a Triple Angiokinase Inhibitor, and Pemetrexed in Pretreated Non-Small Cell Lung Cancer Patients**
Peter M. Ellis, Rolf Kaiser, Yihua Zhao, Peter Stopfer, Steve Gyorffy, and Nasser Hanna
- 2890 **Rationally Designed Pharmacogenomic Treatment Using Concurrent Capecitabine and Radiotherapy for Glioblastoma; Gene Expression Profiles Associated with Outcome**
Jessica M. Grunda, John Fiveash, Cheryl A. Palmer, Alan Cantor, Hassan M. Fathallah-Shaykh, L. Burt Nabors, and Martin R. Johnson
- 2899 **Intraindividual Comparison of Selective Arterial versus Venous ^{68}Ga -DOTATOC PET/CT in Patients with Gastroenteropancreatic Neuroendocrine Tumors**
Clemens Kratochwil, Frederik L. Giesel, Ruben López-Benítez, Nadine Schimpfky, Kirsten Kunze, Michael Eisenhut, Hans-Ulrich Kauczor, and Uwe Haberkorn

2906 | **Phase II Study on the Addition of ASA404 (Vadimezan; 5,6-Dimethylxanthenone-4-Acetic Acid) to Docetaxel in CRMPC**
Roberto Pili, Mark A. Rosenthal, Paul N. Mainwaring, Guy Van Hazel, Sandy Srinivas, Robert Dreicer, Sanjay Goel, Joseph Leach, Shirley Wong, and Peter Clingan

2915 | **MicroRNA Microarray Analysis of Human Adrenocortical Tumors Identifies miR-195 and miR-483-5p as Predictors of Poor Prognosis in Adrenocortical Cancer – Response**
Patsy S.H. Soon, Lyndal J. Tacon, Roderick J. Clifton-Bligh, Bruce G. Robinson, Stan B. Sidhu, Peter R. Campbell, Anthony J. Gill, Christopher P. Bambach, Mark S. Sywak, Michael W. Yeh, and Steven G. Wong

LETTERS TO THE EDITOR

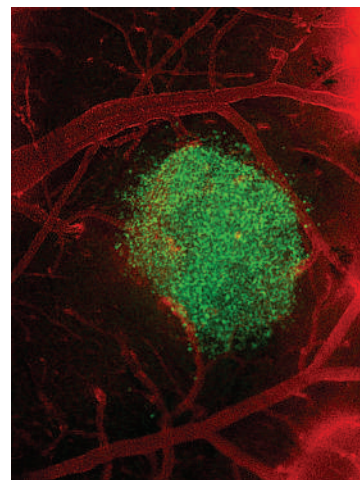
2915 | **Differences in MicroRNA Expression Profiles of Adrenocortical Tumors – Letter**
Zsófia Tömböl, Peter M. Szabó, Attila Patócs, Károly Rácz, and Peter Igaz

CORRECTION

2917 | **Correction: Lack of Correlation between Epidermal Growth Factor Receptor Status and Response to Panitumumab Monotherapy in Metastatic Colorectal Cancer**

ABOUT THE COVER

Drug-induced differentiation is considered a promising approach to eradicate stem-like tumor cells in glioma. In their study, Campos and colleagues analyzed potential effects of a retinoid-based differentiation therapy on the angiogenic behavior of stem-like glioma cells. The representative intravital fluorescence image on the cover shows vessel activity in the proximity of a retinoid-treated, green fluorescent protein–transfected tumor spheroid, placed on a cerebral mouse cortex. *In vivo* differentiated stem-like glioma cells showed only moderate signs of angiogenic activity and absent neovascularization, suggesting that differentiation therapy impairs their angiogenic behavior. For details, see the article by Campos and colleagues on page 2715 of this issue.



Clinical Cancer Research

16 (10)

Clin Cancer Res 2010;16:2697-2917.

Updated version Access the most recent version of this article at:
<http://clincancerres.aacrjournals.org/content/16/10>

E-mail alerts [Sign up to receive free email-alerts](#) related to this article or journal.

Reprints and Subscriptions To order reprints of this article or to subscribe to the journal, contact the AACR Publications Department at pubs@aacr.org.

Permissions To request permission to re-use all or part of this article, use this link <http://clincancerres.aacrjournals.org/content/16/10>. Click on "Request Permissions" which will take you to the Copyright Clearance Center's (CCC) Rightslink site.