

## Highlights of This Issue vii

## SPECIAL FEATURES

### CCR Translations

- 371 **Individualizing Dosing of Irinotecan**  
Mark J. Ratain and Federico Innocenti  
*See article p. 736*

- 373 **Immunoglobulin Heavy Chain Variable Gene Usage and (Super)-antigen Drive in Chronic Lymphocytic Leukemia**  
Andreas Bühler, Thorsten Zenz, and Stephan Stilgenbauer  
*See article p. 620*

### Molecular Pathways

- 376 **New Insights into Checkpoint Kinase 1 in the DNA Damage Response Signaling Network**  
Yun Dai and Steven Grant

- 384 **Targeting Polo-like Kinase in Cancer Therapy**  
Yan Degenhardt and Thomas Lampkin

### Review

- 390 **Development of Molecularly Targeted Therapies in Hepatocellular Carcinoma: Where Do We Go Now?**  
Richard S. Finn

## HUMAN CANCER BIOLOGY

- 398 **Methylation Induced Gene Silencing of HtrA3 in Smoking-Related Lung Cancer**  
Daniah Belefard, Zhixue Liu, Ramandeep Rattan, Lucio Quagliuolo, Mariarosaria Boccellino, Alfonso Baldi, Jacie Maguire, Julie Staub, Julian Molina, and Viji Shridhar

- 410 **Identification of Cyclooxygenase-2 as a Major Actor of the Transcriptomic Adaptation of Endothelial and Tumor Cells to Cyclic Hypoxia: Effect on Angiogenesis and Metastases**  
Géraldine Daneau, Romain Boidot, Philippe Martinive, and Olivier Feron

- 420 **Angiopoietin-2 Promotes Disease Progression of Neuroendocrine Tumors**

Katharina M. Detjen, Svenja Rieke, Antje Deters, Petra Schulz, Annett Rexin, Sonja Vollmer, Peter Hauff, Bertram Wiedenmann, Marianne Pavel, and Arne Scholz

- 430 **MicroRNA Expression Differentiates Histology and Predicts Survival of Lung Cancer**

Maria Teresa Landi, Yingdong Zhao, Melissa Rotunno, Jill Koshiol, Hui Liu, Andrew W. Bergen, Maurizia Rubagotti, Alisa M. Goldstein, Ilona Linnoila, Francesco M. Marincola, Margaret A. Tucker, Pier Alberto Bertazzi, Angela C. Pesatori, Neil E. Caporaso, Lisa M. McShane, and Ena Wang

- 442 **Mechanisms of Inactivation of PTCH1 Gene in Nevoid Basal Cell Carcinoma Syndrome: Modification of the Two-Hit Hypothesis**

Shuang Pan, Qing Dong, Li-Sha Sun, and Tie-Jun Li

- 451 **ERBB2 Induces an Antiapoptotic Expression Pattern of Bcl-2 Family Members in Node-Negative Breast Cancer**

Ilka Brigitte Petry, Esther Fieber, Marcus Schmidt, Mathias Gehrmann, Susanne Gebhard, Matthias Hermes, Wiebke Schormann, Silvia Selinski, Evgenia Freis, Holger Schwender, Marc Brulport, Katja Ickstadt, Jörg Rahnenführer, Lindsey Maccoux, Jonathan West, Heinz Kölbl, Martin Schuler, and Jan Georg Hengstler

- 461 **Glioma-Associated Cancer-Initiating Cells Induce Immunosuppression**

Jun Wei, Jason Barr, Ling-Yuan Kong, Yongtao Wang, Adam Wu, Amit K. Sharma, Joy Gumin, Verlene Henry, Howard Colman, Raymond Sawaya, Frederick F. Lang, and Amy B. Heimberger

## CANCER THERAPY: PRECLINICAL

- 474 **HER2-Specific T Cells Target Primary Glioblastoma Stem Cells and Induce Regression of Autologous Experimental Tumors**  
Nabil Ahmed, Vita S. Salsman, Yvonne Kew, Donald Shaffer, Suzanne Powell, Yi J. Zhang, Robert G. Grossman, Helen E. Heslop, and Stephen Gottschalk
- 486 **GSK690693 Delays Tumor Onset and Progression in Genetically Defined Mouse Models Expressing Activated Akt**  
Deborah A. Altomare, Lili Zhang, Jing Deng, Antonio Di Cristofano, Andres J. Klein-Szanto, Rakesh Kumar, and Joseph R. Testa
- 497 **Antibodies to TWEAK Receptor Inhibit Human Tumor Growth through Dual Mechanisms**  
Patricia A. Culp, Donghee Choi, Yongke Zhang, Johnny Yin, Pui Seto, Suzanne E. Ybarra, Mian Su, Mien Sho, Roxanne Steinle, Melanie H.L. Wong, Ferdinand Evangelista, Jennifer Grove, Marie Cardenas, Marjorie James, Eric D. Hsi, Debra T. Chao, David B. Powers, Vanitha Ramakrishnan, and Robert Dubridge
- 509 **Mechanisms of Ascorbate-Induced Cytotoxicity in Pancreatic Cancer**  
Juan Du, Sean M. Martin, Mark Levine, Brett A. Wagner, Garry R. Buettner, Sih-han Wang, Agshin F. Taghiyev, Changbin Du, Charles M. Knudson, and Joseph J. Cullen
- 521 **Antitumor Effect of NK012, a 7-Ethyl-10-Hydroxycamptothecin-Incorporating Polymeric Micelle, on U87MG Orthotopic Glioblastoma in Mice Compared with Irinotecan Hydrochloride in Combination with Bevacizumab**  
Jun-ichiro Kuroda, Jun-ichi Kuratsu, Masahiro Yasunaga, Yoshikatsu Koga, Hirotsugu Kenmotsu, Takashi Sugino, and Yasuhiro Matsumura
- 530 **NVP-BE235 as a New Therapeutic Option for Sarcomas**  
Maria C. Manara, Giordano Nicoletti, Diana Zambelli, Selena Ventura, Clara Guerzoni, Lorena Landuzzi, Pier-Luigi Lollini, Saveur-Michel Maira, Carlos García-Echeverría, Mario Mercuri, Piero Picci, and Katia Scotlandi
- 541 **Improved Potency and Selectivity of an Oncolytic E1ACR2 and E1B19K Deleted Adenoviral Mutant in Prostate and Pancreatic Cancers**  
Daniel Öberg, Eva Yanover, Virginie Adam, Katrina Sweeney, Celina Costas, Nick R. Lemoine, and Gunnel Halldén
- 554 **Romidepsin and Belinostat Synergize the Antineoplastic Effect of Bortezomib in Mantle Cell Lymphoma**  
Luca Paoluzzi, Luigi Scotto, Enrica Marchi, Jasmine Zain, Venkatraman E. Seshan, and Owen A. O'Connor
- 566 **Activity of the Kinesin Spindle Protein Inhibitor Ispinesib (SB-715992) in Models of Breast Cancer**  
James W. Purcell, Jefferson Davis, Mamatha Reddy, Shamra Martin, Kimberly Samayoa, Hung Vo, Karen Thomsen, Peter Bean, Wen Lin Kuo, Safiyyah Ziyad, Jessica Billig, Heidi S. Feiler, Joe W. Gray, Kenneth W. Wood, and Sylvaine Cases
- 577 **Interleukin 13 Mediates Signal Transduction through Interleukin 13 Receptor  $\alpha 2$  in Pancreatic Ductal Adenocarcinoma: Role of IL-13 *Pseudomonas* Exotoxin in Pancreatic Cancer Therapy**  
Takeshi Shimamura, Toshio Fujisawa, Syed R. Husain, Bharat Joshi, and Raj K. Puri
- 587 **Activities of SYK and PLC $\gamma 2$  Predict Apoptotic Response of CLL Cells to SRC Tyrosine Kinase Inhibitor Dasatinib**  
Zibo Song, Pin Lu, Richard R. Furman, John P. Leonard, Peter Martin, Lauren Tyrell, Francis Y. Lee, Daniel M. Knowles, Morton Coleman, and Y. Lynn Wang
- 600 **Secretory Leukocyte Protease Inhibitor Antagonizes Paclitaxel in Ovarian Cancer Cells**  
Nabila Rasool, William LaRoche, Haihong Zhong, Gulshan Ara, Joshua Cohen, and Elise C. Kohn

## IMAGING, DIAGNOSIS, PROGNOSIS

- 610 **Accurate Classification of Non-Small Cell Lung Carcinoma Using a Novel MicroRNA-Based Approach**  
Justin A. Bishop, Hila Benjamin, Hila Cholakh, Ayelet Chajut, Douglas P. Clark, and William H. Westra

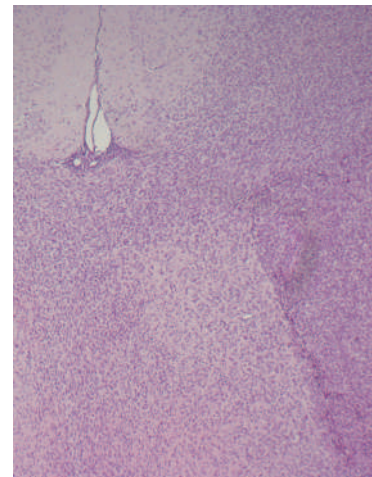
- 620 **Expression of Mutated IGHV3-23 Genes in Chronic Lymphocytic Leukemia Identifies a Disease Subset with Peculiar Clinical and Biological Features**  
Riccardo Bomben, Michele Dal-Bo, Dania Benedetti, Daniela Capello, Francesco Forconi, Daniela Marconi, Francesco Bertoni, Rossana Maffei, Luca Laurenti, Davide Rossi, Maria Ilaria Del Principe, Fabrizio Luciano, Elisa Sozzi, Ilaria Cattarossi, Antonella Zucchetto, Francesca Maria Rossi, Pietro Bulian, Emanuele Zucca, Milena S. Nicoloso, Massimo Degan, Roberto Marasca, Dimitar G. Efreinov, Giovanni Del Poeta, Gianluca Gaidano, and Valter Gattei  
*See commentary p. 373*
- 629 **DNA Microarrays Are Predictive of Cancer Prognosis: A Re-evaluation**  
Xiaohui Fan, Leming Shi, Hong Fang, Yiyu Cheng, Roger Perkins, and Weida Tong
- 637 **A Unifying Microenvironment Model in Follicular Lymphoma: Outcome Is Predicted by Programmed Death-1-Positive, Regulatory, Cytotoxic, and Helper T Cells and Macrophages**  
Björn Engelbrekt Wahlin, Mohit Aggarwal, Santiago Montes-Moreno, Luis Francisco Gonzalez, Giovanna Roncador, Lidia Sanchez-Verde, Birger Christensson, Birgitta Sander, and Eva Kimby
- 651 **Integration of DNA Copy Number Alterations and Prognostic Gene Expression Signatures in Breast Cancer Patients**  
Hugo M. Horlings, Carmen Lai, Dimitry S.A. Nuyten, Hans Halfwerk, Petra Kristel, Erik van Beers, Simon A. Joosse, Christiaan Klijn, Petra M. Nederlof, Marcel J.T. Reinders, Lodewyk F.A. Wessels, and Marc J. van de Vijver
- 673 **A Phase I Study of 7-*t*-Butyldimethylsilyl-10-Hydroxycamptothecin in Adult Patients with Refractory or Metastatic Solid Malignancies**  
Susanne M. Arnold, John J. Rinehart, Eleftheria Tsakalozou, John R. Eckardt, Scott Z. Fields, Brent J. Shelton, Philip A. DeSimone, Bryan K. Kee, Jeffrey A. Moscow, and Markos Leggas
- 681 **Identification of Markers of Taxane Sensitivity Using Proteomic and Genomic Analyses of Breast Tumors from Patients Receiving Neoadjuvant Paclitaxel and Radiation**  
Joshua A. Bauer, A. Bapsi Chakravarthy, Jennifer M. Rosenbluth, Deming Mi, Erin H. Seeley, Nara De Matos Granja-Ingram, Maria G. Olivares, Mark C. Kelley, Ingrid A. Mayer, Ingrid M. Meszoely, Julie A. Means-Powell, Kimberly N. Johnson, Chiaojung Jillian Tsai, Gregory D. Ayers, Melinda E. Sanders, Robert J. Schneider, Silvia C. Formenti, Richard M. Caprioli, and Jennifer A. Pietenpol
- 691 **The Cross-Validated Adaptive Signature Design**  
Boris Freidlin, Wenyu Jiang, and Richard Simon
- 699 **Safety, Pharmacokinetics, and Pharmacodynamics of AMG 102, a Fully Human Hepatocyte Growth Factor–Neutralizing Monoclonal Antibody, in a First-in-Human Study of Patients with Advanced Solid Tumors**  
Michael S. Gordon, Christopher J. Sweeney, David S. Mendelson, S. Gail Eckhardt, Abraham Anderson, Darrin M. Beaupre, Daniel Branstetter, Teresa L. Burgess, Angela Coxon, Hongjie Deng, Paula Kaplan-Lefko, Ian M. Leitch, Kelly S. Oliner, Lucy Yan, Min Zhu, and Lia Gore
- 711 **Prospective Comparison of Clinical and Genomic Multivariate Predictors of Response to Neoadjuvant Chemotherapy in Breast Cancer**  
Jae K. Lee, Charles Coutant, Young-Chul Kim, Yuan Qi, Dan Theodorescu, W. Fraser Symmans, Keith Baggerly, Roman Rouzier, and Lajos Pusztai
- 719 **Time to Treatment Response in Patients with Follicular Lymphoma Treated with Bortezomib Is**
- 664 **Vandetanib, Designed to Inhibit VEGFR2 and EGFR Signaling, Had No Clinical Activity as Monotherapy for Recurrent Ovarian Cancer and No Detectable Modulation of VEGFR2**  
Christina M. Annunziata, Amanda J. Walker, Lori Minasian, Minshu Yu, Herbert Kotz, Bradford J. Wood, Katherine Calvo, Peter Choyke, Daniel Kimm, Seth M. Steinberg, and Elise C. Kohn

## CANCER THERAPY: CLINICAL

- Longer Compared with Other Histologic Subtypes**  
Owen A. O'Connor, Carol Portlock, Craig Moskowitz, Paul Hamlin, David Straus, John Gerecitano, Mithat Gonen, Otilia Dumitrescu, Debra Sarasohn, John Butos, Ellen Neylon, Barbara Mac-Gregor Cortelli, Susan Blumel, Andrew M. Evens, Andrew D. Zelenetz, John Wright, Brenda Cooper, Jane Winter, and Julie Vose
- 727 **Phase I Study of Recombinant Human Interleukin-7 Administration in Subjects with Refractory Malignancy**  
Claude Sportès, Rebecca R. Babb, Michael C. Krumlauf, Frances T. Hakim, Seth M. Steinberg, Catherine K. Chow, Margaret R. Brown, Thomas A. Fleisher, Pierre Noel, Irina Maric, Maryalice Stetler-Stevenson, Julie Engel, Renaud Buffet, Michel Morre, Robert J. Amato, Andrew Pecora, Crystal L. Mackall, and Ronald E. Gress
- 736 **A CYP3A4 Phenotype-Based Dosing Algorithm for Individualized Treatment of Irinotecan**  
Jessica M. van der Bol, Ron H.J. Mathijssen, Geert-Jan M. Creemers, André S.Th. Planting, Walter J. Loos, Erik A.C. Wiemer, Lena E. Friberg, Jaap Verweij, Alex Sparreboom, and Floris A. de Jong  
*See commentary p. 371*
- 743 **Tumor O<sup>6</sup>-methylguanine-DNA Methyltransferase Inactivation by Oral Lomeguatrib**  
Amanda J. Watson, Ami Sabharwal, Mary Thorncroft, Gail McGown, Richard Kerr, Stana Bojanic, Zahir Soonawalla, Alexandra King, Andrea Miller, Sue Waller, Hing Leung, Geoffrey P. Margison, and Mark R. Middleton
- 750 **Phase II Trial of Ixabepilone Administered Daily for Five Days in Children and Young Adults with Refractory Solid Tumors: A Report from the Children's Oncology Group**  
Shana Jacobs, Elizabeth Fox, Mark Krailo, Gwen Hartley, Fariba Navid, Leonard Wexler, Susan M. Blaney, Anne Goodwin, Wendy Goodspeed, Frank M. Balis, Peter C. Adamson, and Brigitte C. Widemann
- SUSCEPTIBILITY AND PREVENTION**
- 755 **Analysis of Genetic Variants in Never-Smokers with Lung Cancer Facilitated by an Internet-Based Blood Collection Protocol: A Preliminary Report**  
Nicolas Girard, Emil Lou, Christopher G. Azzoli, Rekha Reddy, Mark Robson, Megan Harlan, Irene Orlow, Yasushi Yatabe, Khedoudja Nafa, Marc Ladanyi, Agnes Viale, Mark G. Kris, Gregory Riely, Vincent Miller, Robert J. Klein, Keitaro Matsuo, and William Pao
- 764 **Reduced DNA Repair Capacity for Removing Tobacco Carcinogen-Induced DNA Adducts Contributes to Risk of Head and Neck Cancer but not Tumor Characteristics**  
Li-E Wang, Zhibin Hu, Erich M. Sturgis, Margaret R. Spitz, Sara S. Strom, Christopher I. Amos, Zhaozheng Guo, Yawei Qiao, Ann Marie Gillenwater, Jeffrey N. Myers, Gary L. Clayman, Randal S. Weber, Adel K. El-Naggar, Li Mao, Scott M. Lippman, Waun Ki Hong, and Qingyi Wei

## ABOUT THE COVER

Glioma-associated cancer-initiating cells participate in tumor-mediated immune suppression by inhibiting effector T-cell functions by a combination of cell surface contact inhibition via B7-H1 and soluble factors including Galectin-3. Shown here are human glioma-associated cancer-initiating cells xenografted into the frontal lobe of a nude mouse that shows their ability to recapitulate many of the hallmark features of malignant gliomas including mass effect, diffuse ill-defined infiltration and tracking along white matter tracts such as the corpus callosum. Differentiation of the glioma-associated cancer-initiating cells markedly reduces their ability to mediate immune suppression. For further details, please see Wei et al on page 461 in this issue.



# Clinical Cancer Research

**16 (2)**

*Clin Cancer Res* 2010;16:vii-774.

**Updated version** Access the most recent version of this article at:  
<http://clincancerres.aacrjournals.org/content/16/2>

**E-mail alerts** [Sign up to receive free email-alerts](#) related to this article or journal.

**Reprints and Subscriptions** To order reprints of this article or to subscribe to the journal, contact the AACR Publications Department at [pubs@aacr.org](mailto:pubs@aacr.org).

**Permissions** To request permission to re-use all or part of this article, use this link <http://clincancerres.aacrjournals.org/content/16/2>. Click on "Request Permissions" which will take you to the Copyright Clearance Center's (CCC) Rightslink site.