

## Highlights of This Issue 4907

### SPECIAL FEATURES

#### CCR Translations

- 4909 | **The Tissue Is the Issue: Personalized Medicine for Non-Small Cell Lung Cancer**  
Fred R. Hirsch, Murry W. Wynes, David R. Gandara, and Paul A. Bunn, Jr.  
*See article p. 4938*

#### Statistics in Clinical Cancer Research

- 4912 | **Comparing Survival Curves Using an Easy to Interpret Statistic**  
Kenneth R. Hess

#### Molecular Pathways

- 4914 | **Targeting Eukaryotic Translation Initiation Factor 4E (eIF4E) in Cancer**  
Andrew C. Hsieh and Davide Ruggero

#### Report from the FDA

- 4921 | **Folotyn (Pralatrexate Injection) for the Treatment of Patients with Relapsed or Refractory Peripheral T-Cell Lymphoma: U.S. Food and Drug Administration Drug Approval Summary**  
Shakun M. Malik, Ke Liu, Xu Qiang, Rajeshwari Sridhara, Shenghui Tang, W. David McGuinn, Jr., S. Leigh Verbois, Anshu Marathe, Gene M. Williams, Julie Bullock, Christoffer Tornøe, Sue Ching Lin, Terrance Ocheltree, Milinda Vialpando, Alice Kacuba, Robert Justice, and Richard Pazdur

### HUMAN CANCER BIOLOGY

- 4928 | **Key Role of Phosphoinositide 3-Kinase Class IB in Pancreatic Cancer**  
Charlotte E. Edling, Federico Selvaggi, Richard Buus, Tania Maffucci, Pierluigi Di Sebastiano, Helmut Friess, Paolo Innocenti, Hemant M. Kocher, and Marco Falasca

- 4938 | **EMLA-ALK Fusion Gene Assessment Using Metastatic Lymph Node Samples Obtained by Endobronchial Ultrasound-Guided Transbronchial Needle Aspiration**  
Yuichi Sakairi, Takahiro Nakajima, Kazuhiro Yasufuku, Dai Ikebe, Hajime Kageyama, Manabu Soda, Kengo Takeuchi, Makiko Itami, Toshihiko Iizasa, Ichiro Yoshino, Hiroyuki Mano, and Hideki Kimura  
*See commentary p. 4909*

### CANCER THERAPY: PRECLINICAL

- 4946 | **Pharmacokinetic/Pharmacodynamic Modeling Identifies SN30000 and SN29751 as Tirapazamine Analogues with Improved Tissue Penetration and Hypoxic Cell Killing in Tumors**  
Kevin O. Hicks, Bronwyn G. Siim, Jagdish K. Jaiswal, Frederik B. Pruijn, Annie M. Fraser, Rita Patel, Alison Hogg, H.D. Sarath Liyanage, Mary Jo Dorie, J. Martin Brown, William A. Denny, Michael P. Hay, and William R. Wilson
- 4958 | **Novel Models of Myxoid Liposarcoma Xenografts Mimicking the Biological and Pharmacologic Features of Human Tumors**  
Roberta Frapolli, Elena Tamborini, Emanuela Viridis, Ezia Bello, Eva Tarantino, Sergio Marchini, Federica Grosso, Roberta Sanfilippo, Alessandro Gronchi, Juan Carlos Tercero, Gabriella Peloso, Paolo Casali, Silvana Pilotti, and Maurizio D'Incalci
- 4968 | **Radiation-Guided Drug Delivery to Mouse Models of Lung Cancer**  
Ghazal Hariri, Heping Yan, Hailun Wang, Zhaozhong Han, and Dennis E. Hallahan
- 4978 | **A Proteasome Inhibitor, Bortezomib, Inhibits Breast Cancer Growth and Reduces Osteolysis by Downregulating Metastatic Genes**  
Marci D. Jones, Julie C. Liu, Thomas K. Barthel, Sadiq Hussain, Erik Lovria, Dengfeng Cheng, Jesse A. Schoonmaker, Sudhanshu Mulay, David C. Ayers, Mary L. Bouxsein, Gary S. Stein, Siddhartha Mukherjee, and Jane B. Lian

4990 **Synergistic Antitumor Activity of Sorafenib in Combination with Epidermal Growth Factor Receptor Inhibitors in Colorectal and Lung Cancer Cells**

Erika Martinelli, Teresa Troiani, Floriana Morgillo, Gabriella Rodolico, Donata Vitagliano, Maria Pia Morelli, Concetta Tuccillo, Loredana Vecchione, Anna Capasso, Michele Orditura, Ferdinando De Vita, S. Gail Eckhardt, Massimo Santoro, Liberato Berrino, and Fortunato Ciardiello

5002 **Targeting the  $\alpha$  Receptor for Platelet-Derived Growth Factor as a Primary or Combination Therapy in a Preclinical Model of Prostate Cancer Skeletal Metastasis**

Mike R. Russell, Qingxin Liu, and Alessandro Fatatis

## IMAGING, DIAGNOSIS, PROGNOSIS

5011 **Portable Filter-Based Microdevice for Detection and Characterization of Circulating Tumor Cells**

Henry K. Lin, Siyang Zheng, Anthony J. Williams, Marija Balic, Susan Groshen, Howard I. Scher, Martin Fleisher, Walter Stadler, Ram H. Datar, Yu-Chong Tai, and Richard J. Cote

5019 **No Evidence of Sex-Related Survival Disparities among Head and Neck Cancer Patients Receiving Similar Multidisciplinary Care: A Matched-Pair Analysis**

Jess C. Roberts, Guojun Li, Lorraine R. Reitzel, Qingyi Wei, and Erich M. Sturgis

5028 **Pancreatic Cancer Screening in a Prospective Cohort of High-Risk Patients: A Comprehensive Strategy of Imaging and Genetics**

Elizabeth C. Verna, Caroline Hwang, Peter D. Stevens, Heidrun Rotterdam, Stavros N. Stavropoulos, Carolyn D. Sy, Martin A. Prince, Wendy K. Chung, Robert L. Fine, John A. Chabot, and Harold Frucht

5038 **Prognostic Gene Expression Signature for Squamous Cell Carcinoma of Lung**

Chang-Qi Zhu, Dan Strumpf, Chun-Yan Li, Qing Li, Ni Liu, Sandy Der, Frances A. Shepherd, Ming-Sound Tsao, and Igor Jurisica

5048 **Gene Expression Analysis Identifies Potential Biomarkers of Neurofibromatosis Type 1 Including Adrenomedullin**

Trent R. Hummel, Walter J. Jessen, Shyra C. Miller, Lan Kluwe, Victor F. Mautner, Margaret R. Wallace, Conxi Lázaro, Grier P. Page, Paul F. Worley, Bruce J. Aronow, Elizabeth K. Schorry, and Nancy Ratner

## CANCER THERAPY: CLINICAL

5058 **Phase I Study of NK012, a Novel SN-38-Incorporating Micellar Nanoparticle, in Adult Patients with Solid Tumors**

Tetsuya Hamaguchi, Toshihiko Doi, Takako Eguchi-Nakajima, Ken Kato, Yasuhide Yamada, Yasuhiro Shimada, Nozomu Fuse, Atsushi Ohtsu, Shin-ichi Matsumoto, Masaya Takanashi, and Yasuhiro Matsumura

5067 **Dendritic Cell Vaccination in Combination with Anti-CD25 Monoclonal Antibody Treatment: A Phase I/II Study in Metastatic Melanoma Patients**

Joannes F.M. Jacobs, Cornelis J.A. Punt, W. Joost Lesterhuis, Roger P.M. Suttmuller, H. Mary-lène H. Brouwer, Nicole M. Scharenborg, Ina S. Klasen, Luuk B. Hilbrands, Carl G. Figdor, I. Jolanda M. de Vries, and Gosse J. Adema

5079 **A Phase I/II Trial Combining High-Dose Melphalan and Autologous Transplant with Bortezomib for Multiple Myeloma: A Dose- and Schedule-Finding Study**

Sagar Lonial, Jonathan Kaufman, Mourad Tighiouart, Ajay Nooka, Amelia A. Langston, Leonard T. Heffner, Claire Torre, Stephanie McMillan, Heather Renfroe, R. Donald Harvey, Mary J. Lechowicz, H. Jean Khoury, Christopher R. Flowers, and Edmund K. Waller

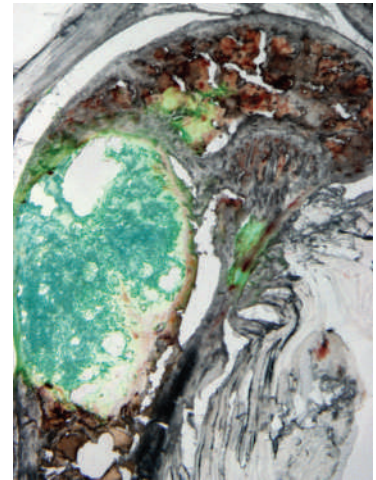
## CORRECTION

5087 **Correction: Effect of Low-Dose Tamoxifen on Steroid Receptor Coactivator 3/Amplified in Breast Cancer 1 in Normal and Malignant Human Breast Tissue**

---

## ABOUT THE COVER

A humanized, monoclonal antibody against PDGFR $\alpha$  was able to inhibit both early colonization of the bone and late progression of skeletal lesions in a murine model of prostate cancer metastasis. The image shows a metastatic tumor produced in the proximal femur by green fluorescent PC3-ML cells, four weeks after being inoculated via the hematogenous route. For further details, please see the article by Russell and colleagues on page 5002 of this issue.



# Clinical Cancer Research

**16 (20)**

*Clin Cancer Res* 2010;16:4907-5087.

**Updated version** Access the most recent version of this article at:  
<http://clincancerres.aacrjournals.org/content/16/20>

**E-mail alerts** [Sign up to receive free email-alerts](#) related to this article or journal.

**Reprints and Subscriptions** To order reprints of this article or to subscribe to the journal, contact the AACR Publications Department at [pubs@aacr.org](mailto:pubs@aacr.org).

**Permissions** To request permission to re-use all or part of this article, use this link <http://clincancerres.aacrjournals.org/content/16/20>. Click on "Request Permissions" which will take you to the Copyright Clearance Center's (CCC) Rightslink site.