

Highlights of This Issue 4187

SPECIAL FEATURES

CCR Translations

- 4189 | **Getting Personal with Melanoma**
Helen Heslop
See article p. 4550

CCR New Strategies

- 4192 | **New Strategies in Non-Small Cell Lung Cancer: Improving Outcomes in Chemoradiotherapy for Locally Advanced Disease**
Ramesh Rengan, Amit M. Maity,
James P. Stevenson, and Stephen M. Hahn

Molecular Pathways

- 4200 | **WEE1 Kinase Targeting Combined with DNA-Damaging Cancer Therapy Catalyzes Mitotic Catastrophe**
Philip C. De Witt Hamer, Shahryar E. Mir,
David Noske, Cornelis J.F. Van Noorden, and
Tom Würdinger

- 4208 | **Adaptive Changes Result in Activation of Alternate Signaling Pathways and Acquisition of Resistance to Aromatase Inhibitors**
Angela Brodie and Gauri Sabnis

Review

- 4214 | **Immune Recruitment and Therapeutic Synergy: Keys to Optimizing Oncolytic Viral Therapy?**
Jay D. Naik, Christopher J. Twelves,
Peter J. Selby, Richard G. Vile, and
John D. Chester

Perspective

- 4225 | **Analysis of Promoter CpG Island Hypermethylation in Cancer: Location, Location, Location!**
Iris J.H. van Vlodrop, Hanneke E.C. Niessen,
Sarah Derks, Marcella M.L.L. Baldewijns,
Wim van Criekinge, James G. Herman, and
Manon van Engeland

HUMAN CANCER BIOLOGY

- 4232 | **Programmed Death Ligand 1 Is Expressed by Non-Hodgkin Lymphomas and Inhibits the Activity of Tumor-Associated T Cells**
David J. Andorsky, Reiko E. Yamada,
Jonathan Said, Geraldine S. Pinkus,
David J. Betting, and John M. Timmerman

- 4245 | **Primary Central Nervous System Lymphomas: a Validation Study of Array-Based Comparative Genomic Hybridization in Formalin-Fixed Paraffin-Embedded Tumor Specimens**
Esteban Braggio, Ellen Remstein McPhail,
William Macon, M. Beatriz Lopes, David Schiff,
Mark Law, Stephanie Fink, Debra Sprau,
Caterina Giannini, Ahmet Dogan,
Rafael Fonseca, and Brian Patrick O'Neill

- 4254 | **KL1 Internal Repeat Mediates Klotho Tumor Suppressor Activities and Inhibits bFGF and IGF-I Signaling in Pancreatic Cancer**
Lilach Abramovitz, Tamar Rubinek,
Hagai Ligumsky, Shikha Bose, Iris Barshack,
Camila Avivi, Bella Kaufman, and Ido Wolf

- 4267 | **BORIS Binding to the Promoters of Cancer Testis Antigens, *MAGEA2*, *MAGEA3*, and *MAGEA4*, Is Associated with Their Transcriptional Activation in Lung Cancer**
Sheetal Bhan, Sandeep S. Negi, Chunbo Shao,
Chad A. Glazer, Alice Chuang,
Daria A. Gaykalova, Wenyue Sun,
David Sidransky, Patrick K. Ha, and
Joseph A. Califano

- 4277 | **Clinical Significance of *miR-146a* in Gastric Cancer Cases**
Ryunosuke Kogo, Koshi Mimori,
Fumiaki Tanaka, Shizuo Komune, and
Masaki Mori

- 4285 | **PLK1 Is Transcriptionally Activated by NF- κ B during Cell Detachment and Enhances Anoikis Resistance through Inhibiting β -Catenin Degradation in Esophageal Squamous Cell Carcinoma**
De-Chen Lin, Yu Zhang, Qin-Jing Pan, Hai Yang,
Zhi-Zhou Shi, Zhi-Hui Xie, Bo-Shi Wang,
Jia-Jie Hao, Tong-Tong Zhang, Xin Xu,
Qi-Min Zhan, and Ming-Rong Wang

- 4296 **Effector T-Cell Infiltration Positively Impacts Survival of Glioblastoma Patients and Is Impaired by Tumor-Derived TGF- β**
Jennifer Lohr, Thomas Ratliff, Andrea Huppertz, Yingzi Ge, Christine Dictus, Rezvan Ahmadi, Stefan Grau, Nobuyoshi Hiraoka, Volker Eckstein, Rupert C. Ecker, Thomas Korff, Andreas von Deimling, Andreas Unterberg, Philipp Beckhove, and Christel Herold-Mende
- 4309 **MAGE-A Inhibits Apoptosis in Proliferating Myeloma Cells through Repression of Bax and Maintenance of Survivin**
Tricia Nardiello, Achim A. Jungbluth, Anna Mei, Maurizio DiLiberto, Xiangao Huang, Ania Dabrowski, Valéria C.C. Andrade, Rebecca Wasserstrum, Scott Ely, Ruben Niesvizky, Roger Pearse, Morton Coleman, David S. Jayabalan, Nina Bhardwaj, Lloyd J. Old, Selina Chen-Kiang, and Hearn Jay Cho
- 4320 **Integrated, Genome-Wide Screening for Hypomethylated Oncogenes in Salivary Gland Adenoid Cystic Carcinoma**
Chunbo Shao, Wenyue Sun, Marietta Tan, Chad A. Glazer, Sheetal Bhan, Xiaoli Zhong, Carole Fakhry, Rajni Sharma, William H. Westra, Mohammad O. Hoque, Christopher A. Moskaluk, David Sidransky, Joseph A. Califano, and Patrick K. Ha
- 4331 **NGAL Expression Is Elevated in Both Colorectal Adenoma–Carcinoma Sequence and Cancer Progression and Enhances Tumorigenesis in Xenograft Mouse Models**
Yan Sun, Kenji Yokoi, Hui Li, Jun Gao, Limei Hu, Ben Liu, Kexin Chen, Stanley R. Hamilton, Dominic Fan, Baocun Sun, and Wei Zhang
- 4341 **Genome-Wide Analysis of Promoter Methylation Associated with Gene Expression Profile in Pancreatic Adenocarcinoma**
Audrey Vincent, Noriyuki Omura, Seung-Mo Hong, Andrew Jaffe, James Eshleman, and Michael Goggins
- 4355 **FGFR-4 Arg³⁸⁸ Enhances Prostate Cancer Progression via Extracellular Signal-Related Kinase and Serum Response Factor Signaling**
Wendong Yu, Shu Feng, Olga Dakhova, Chad J. Creighton, Yi Cai, Jianghua Wang, Rile Li, Anna Frolov, Gustavo Ayala, and Michael Ittmann
- 4367 **EGFR Signaling Regulates Tumor Cell Migration in Craniopharyngiomas**
Annett Hölsken, Matthias Gebhardt, Michael Buchfelder, Rudolf Fahlbusch, Ingmar Blümcke, and Rolf Buslei

CANCER THERAPY: PRECLINICAL

- 4378 **Dual mTORC2/mTORC1 Targeting Results in Potent Suppressive Effects on Acute Myeloid Leukemia (AML) Progenitors**
Jessica K. Altman, Antonella Sassano, Surinder Kaur, Heather Glaser, Barbara Kroczyńska, Amanda J. Redig, Suzanne Russo, Sharon Barr, and Leonidas C. Platanias
- 4389 **FGFR3 Is Overexpressed Waldenström Macroglobulinemia and Its Inhibition by Dovitinib Induces Apoptosis and Overcomes Stroma-Induced Proliferation**
Abdel Kareem Azab, Feda Azab, Phong Quang, Patricia Maiso, Antonio Sacco, Hai T. Ngo, Yang Liu, Yong Zhang, Brittany L. Morgan, Aldo M. Roccaro, and Irene M. Ghobrial
- 4400 **Epidermal Growth Factor Receptor Inhibition Augments the Expression of MHC Class I and II Genes**
Brian P. Pollack, Bishu Sapkota, and Todd V. Cartee
- 4414 **Natura-Alpha Targets Forkhead Box M1 and Inhibits Androgen-Dependent and -Independent Prostate Cancer Growth and Invasion**
Yirong Li, Martin Ligr, James P. McCarron, Garrett Daniels, David Zhang, Xin Zhao, Fei Ye, Jinhua Wang, Xiaomei Liu, Iman Osman, Simon K. Mencher, Hebert Lepor, Long G. Wang, and Peng Lee
- 4425 **Dual Blockade of EGFR and c-Met Abrogates Redundant Signaling and Proliferation in Head and Neck Carcinoma Cells**
Hai Xu, Laura P. Stabile, Christopher T. Gubish, William E. Gooding, Jennifer R. Grandis, and Jill M. Siegfried
- 4439 **SKLB1002, a Novel Potent Inhibitor of VEGF Receptor 2 Signaling, Inhibits Angiogenesis and Tumor Growth *In Vivo***
Shuang Zhang, Zhixing Cao, Hongwei Tian, Guobo Shen, Yongping Ma, Huanzhang Xie, Yalin Liu, Chengjian Zhao, Senyi Deng, Yang Yang, Renlin Zheng, Weiwei Li, Na Zhang, Shengyong Liu, Wei Wang, Lixia Dai, Shuai Shi, Lin Cheng, Youli Pan, Shan Feng, Xia Zhao, Hongxin Deng, Shengyong Yang, and Yuquan Wei

4451 **Trastuzumab and Pertuzumab Produce Changes in Morphology and Estrogen Receptor Signaling in Ovarian Cancer Xenografts Revealing New Treatment Strategies**

Dana Faratian, Annelien J.M. Zweemer, Yoko Nagumo, Andrew H. Sims, Morwenna Muir, Michael Dodds, Peter Mullen, Inhwa Um, Charlene Kay, Max Hasmann, David J. Harrison, and Simon P. Langdon

4462 **The Activity of Trabectedin As a Single Agent or in Combination with Everolimus for Clear Cell Carcinoma of the Ovary**

Seiji Mabuchi, Takeshi Hisamatsu, Chiaki Kawase, Masami Hayashi, Kenjiro Sawada, Kazuya Mimura, Kazuhiro Takahashi, Toshifumi Takahashi, Hirohisa Kurachi, and Tadashi Kimura

4474 **The Akt Inhibitor ISC-4 Activates Prostate Apoptosis Response Protein-4 and Reduces Colon Tumor Growth in a Nude Mouse Model**

Arun K. Sharma, Christina L. Kline, Arthur Berg, Shantu Amin, and Rosalyn B. Irby

4513 **Early G₁ Cyclin-Dependent Kinases as Prognostic Markers and Potential Therapeutic Targets in Esophageal Adenocarcinoma**

Amin Ismail, Santhoshi Bandla, Marie Reveiller, Liana Toia, Zhongren Zhou, William E. Gooding, Irina Kalatskaya, Lincoln Stein, Mary D'Souza, Virginia R. Little, Jeffrey H. Peters, Arjun Pennathur, James D. Luketich, and Tony E. Godfrey

4523 **EFEMP1 as a Novel DNA Methylation Marker for Prostate Cancer: Array-Based DNA Methylation and Expression Profiling**

Yong-June Kim, Hyung-Yoon Yoon, Seon-Kyu Kim, Young-Won Kim, Eun-Jung Kim, Isaac Yi Kim, and Wun-Jae Kim

4531 **Association of *CHFR* Promoter Methylation with Disease Recurrence in Locally Advanced Colon Cancer**

Motofumi Tanaka, Ping Chang, Yanan Li, Donghui Li, Michael Overman, Dipen M. Maru, Salil Sethi, Jonathan Phillips, Gail L. Bland, James L. Abbruzzese, and Cathy Eng

IMAGING, DIAGNOSIS, PROGNOSIS

4484 **Distinguishing Inflammation from Tumor and Peritumoral Edema by Myeloperoxidase Magnetic Resonance Imaging**

Anne Kleijn, John W. Chen, Jason S. Buhrman, Gregory R. Wojtkiewicz, Yoshiko Iwamoto, Martine L. Lamfers, Anat O. Stemmer-Rachamimov, Samuel D. Rabkin, Ralph Weissleder, Robert L. Martuza, and Giulia Fulci

4494 **An Epigenetic Marker Panel for Detection of Lung Cancer Using Cell-Free Serum DNA**

Shahnaz Begum, Mariana Brait, Santanu Dasgupta, Kimberly L. Ostrow, Marianna Zahurak, André L. Carvalho, Joseph A. Califano, Steven N. Goodman, William H. Westra, Mohammad Obaidul Hoque, and David Sidransky

4504 **Changes in Tumor Density in Patients with Advanced Hepatocellular Carcinoma Treated with Sunitinib**

Sandrine Faivre, Magaly Zappa, Valérie Vilgrain, Eveline Boucher, Jean-Yves Douillard, Ho Y. Lim, Jun S. Kim, Seock-Ah Im, Yoon-Koo Kang, Mohamed Bouattour, Safi Dokmak, Chantal Dreyer, Marie-Paule Sablin, Camille Serrate, Ann-Lii Cheng, Silvana Lanzalone, Xun Lin, Maria J. Lechuga, and Eric Raymond

CANCER THERAPY: CLINICAL

4541 **Cancer Patients Treated with Sunitinib or Sorafenib Have Sufficient Antibody and Cellular Immune Responses to Warrant Influenza Vaccination**

Sasja F. Mulder, Joannes F.M. Jacobs, Michel A.M. Olde Nordkamp, Joep M.D. Galama, Ingrid M.E. Desar, Ruurd Torensma, Steven Teerenstra, Peter F.A. Mulders, Kris C.P. Vissers, Cornelis J.A. Punt, I. Jolanda M. de Vries, and Carla M.L. van Herpen

4550 **Durable Complete Responses in Heavily Pretreated Patients with Metastatic Melanoma Using T-Cell Transfer Immunotherapy**

Steven A. Rosenberg, James C. Yang, Richard M. Sherry, Udai S. Kammula, Marybeth S. Hughes, Giao Q. Phan, Deborah E. Citrin, Nicholas P. Restifo, Paul F. Robbins, John R. Wunderlich, Kathleen E. Morton, Carolyn M. Laurencot, Seth M. Steinberg, Donald E. White, and Mark E. Dudley
See commentary p. 4189

4558 **Randomized Trial of Autologous Cellular Immunotherapy with Sipuleucel-T in Androgen-Dependent Prostate Cancer**

Tomasz M. Beer, Guy T. Bernstein, John M. Corman, L. Michael Glode, Simon J. Hall, Wayne L. Poll, Paul F. Schellhammer, Lori A. Jones, Yi Xu, Jelle W. Kylstra, and Mark W. Frohlich

- 4568 | **Telomerase Peptide Vaccination Combined with Temozolomide: A Clinical Trial in Stage IV Melanoma Patients**
Jon Amund Kyte, Gustav Gaudernack, Svein Dueland, Sissel Trachsel, Lars Julsrud, and Steinar Aamdal

PREDICTIVE BIOMARKERS AND PERSONALIZED MEDICINE

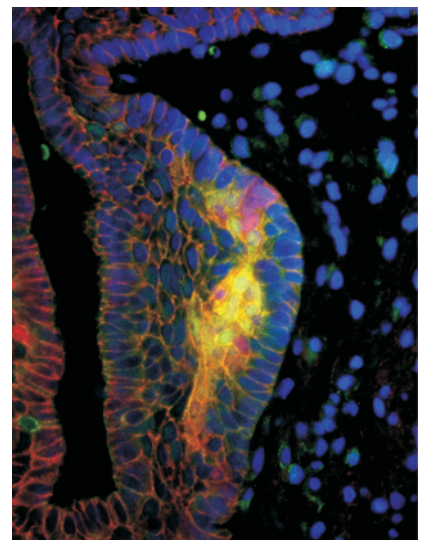
- 4581 | **Multiple Loci Modulate Opioid Therapy Response for Cancer Pain**
Antonella Galvan, Frank Skorpen, Pål Klepstad, Anne Kari Knudsen, Torill Fladvad, Felicia S. Falvella, Alessandra Pigni, Cinzia Brunelli, Augusto Caraceni, Stein Kaasa, and Tommaso A. Dragani
- 4588 | **Molecular Markers in Low-Grade Gliomas: Predictive or Prognostic?**
Christian Hartmann, Bettina Hentschel, Marcos Tatagiba, Johannes Schramm, Oliver Schnell, Clemens Seidel, Robert Stein, Guido Reifenberger, Torsten Pietsch, Andreas von Deimling, Markus Loeffler, and Michael Weller for the German Glioma Network Weller
- 4600 | **Effect of eIF3a on Response of Lung Cancer Patients to Platinum-Based Chemotherapy by Regulating DNA Repair**
Ji-Ye Yin, Jie Shen, Zi-Zheng Dong, Qiong Huang, Mei-Zuo Zhong, De-Yun Feng, Hong-Hao Zhou, Jian-Ting Zhang, and Zhao-Qian Liu

LETTERS TO THE EDITOR

- 4610 | **Gefitinib versus Docetaxel for Previously Treated NSCLC—Letter**
Davide Tassinari, Luigi Lazzari-Agli, Paola Tombesi, and Sergio Sartori
- 4611 | **Gefitinib versus Docetaxel for Previously Treated NSCLC—Response**
Dae Ho Lee and Sang-We Kim
- 4612 | **Modeling the Tumor Growth Profiles in Xenograft Experiments—Letter**
Ioannis D. Bassukas
- 4613 | **Modeling the Tumor Growth Profiles in Xenograft Experiments—Response**
Lili Zhao, Meredith A. Morgan, Leslie A. Parsels, Jonathan Maybaum, Theodore S. Lawrence, and Daniel Normolle
- 4614 | **Clinical Trial Development as a Predictor of Accrual Performance—Letter**
Anneke T. Schroen
- 4615 | **Clinical Trial Development as a Predictor of Accrual Performance—Response**
Steven K. Cheng and David M. Dilts

ABOUT THE COVER

Immunohistochemical double-fluorescence analysis of an adamantinomatous craniopharyngioma in human brain. Activated EGFR (green) can be detected in tumor cells with nuclear β -catenin (red) accumulation (yellow). Cell nuclei (blue) were counterstained with H \ddot{o} chst. For further details, please see H \ddot{o} lsken and coworkers on page 4367 in this issue.



Clinical Cancer Research

17 (13)

Clin Cancer Res 2011;17:4187-4615.

Updated version Access the most recent version of this article at:
<http://clincancerres.aacrjournals.org/content/17/13>

E-mail alerts [Sign up to receive free email-alerts](#) related to this article or journal.

Reprints and Subscriptions To order reprints of this article or to subscribe to the journal, contact the AACR Publications Department at pubs@aacr.org.

Permissions To request permission to re-use all or part of this article, use this link
<http://clincancerres.aacrjournals.org/content/17/13>.
Click on "Request Permissions" which will take you to the Copyright Clearance Center's (CCC) Rightslink site.