

## Highlights of This Issue 4217

## SPECIAL FEATURES

### CCR Translations

- 4219 **Might Cigarettes Be a "Smoking Gun" to Reduce Taxane Myelotoxicity?**  
Lionel D. Lewis and Mark J. Ratain  
*See article p. 4425*
- 4222 **Zeroing in on *ROS1* Rearrangements in Non-Small Cell Lung Cancer**  
Magda Stumpfova and Pasi A. Jänne  
*See article p. 4449*

### Statistics in Clinical Cancer Research

- 4225 **A 2-Stage Phase II Design with Direct Assignment Option in Stage II for Initial Marker Validation**  
Ming-Wen An, Sumithra J. Mandrekar, and Daniel J. Sargent

### Molecular Pathways

- 4234 **Molecular Pathways: MicroRNAs as Cancer Therapeutics**  
Sonia A. Melo and Raghu Kalluri
- 4240 **Molecular Pathways: Dysregulated Glutamatergic Signaling Pathways in Cancer**  
Todd D. Prickett and Yardena Samuels

### CCR Focus

- 4248 **Pancreatic Cancer: Steps in the Right Direction**  
Susan E. Bates
- 4249 **Translational Therapeutic Opportunities in Ductal Adenocarcinoma of the Pancreas**  
Manuel Hidalgo and Daniel D. Von Hoff
- 4257 **Genetic Basis of Pancreas Cancer Development and Progression: Insights from Whole-Exome and Whole-Genome Sequencing**  
Christine A. Iacobuzio-Donahue, Victor E. Velculescu, Christopher L. Wolfgang, and Ralph H. Hruban

- 4266 **The Pancreas Cancer Microenvironment**  
Christine Feig, Aarthi Gopinathan, Albrecht Neesse, Derek S. Chan, Natalie Cook, and David A. Tuveson
- 4277 **Heterogeneity and Targeting of Pancreatic Cancer Stem Cells**  
Vesselin R. Penchev, Zeshaan A. Rasheed, Anirban Maitra, and William Matsui
- 4285 **Conceptual Framework for Cutting the Pancreatic Cancer Fuel Supply**  
Anne Le, N.V. Rajeshkumar, Anirban Maitra, and Chi V. Dang

## HUMAN CANCER BIOLOGY

- 4291 **Deregulation of a Hox Protein Regulatory Network Spanning Prostate Cancer Initiation and Progression**  
James L. Chen, Jianrong Li, Kyle J. Kiriluk, Alex M. Rosen, Gladell P. Paner, Tatjana Antic, Yves A. Lussier, and Donald J. Vander Griend
- 4303 **Genome-Wide Somatic Copy Number Alterations in Low-Grade PanINs and IPMNs from Individuals with a Family History of Pancreatic Cancer**  
Seung-Mo Hong, Audrey Vincent, Mitsuro Kanda, Julie Leclerc, Noriyuki Omura, Michael Borges, Alison P. Klein, Marcia Irene Canto, Ralph H. Hruban, and Michael Goggins
- 4313 **The Zinc Finger Gene *ZIC2* Has Features of an Oncogene and Its Overexpression Correlates Strongly with the Clinical Course of Epithelial Ovarian Cancer**  
Sergio Marchini, Elizabeth Poynor, Richard R. Barakat, Luca Clivio, Michela Cinquini, Robert Fruscio, Luca Porcu, Cecilia Bussani, Maurizio D'Incalci, Eugenio Erba, Michela Romano, Giorgio Cattoretti, Dionyssios Katsaros, Andrew Koff, and Lucio Luzzatto
- 4325 **MDM2 Overexpression Deregulates the Transcriptional Control of RB/E2F Leading to DNA Methyltransferase 3A Overexpression in Lung Cancer**  
Yen-An Tang, Ruo-Kai Lin, Yo-Ting Tsai, Han-Shui Hsu, Yi-Chieh Yang, Chih-Yi Chen, and Yi-Ching Wang

- 4334 | **Prolonged Postovulatory Proinflammatory Signaling in the Fallopian Tube Epithelium May Be Mediated through a BRCA1/DAB2 Axis**  
Alicia A. Tone, Carl Virtanen, Patricia Shaw, and Theodore J. Brown

## CANCER THERAPY: PRECLINICAL

- 4345 | **Combination Small Molecule MEK and PI3K Inhibition Enhances Uveal Melanoma Cell Death in a Mutant GNAQ- and GNAI1-Dependent Manner**  
Jahan S. Khalili, Xiaoxing Yu, Ji Wang, Brendan C. Hayes, Michael A. Davies, Gregory Lizee, Bitu Esmaeli, and Scott E. Woodman
- 4356 | **S100P-Derived RAGE Antagonistic Peptide Reduces Tumor Growth and Metastasis**  
Thiruvengadam Arumugam, Vijaya Ramachandran, Sobeyda B. Gomez, Ann M. Schmidt, and Craig D. Logsdon
- 4365 | **Inhibition of the Kit Ligand/c-Kit Axis Attenuates Metastasis in a Mouse Model Mimicking Local Breast Cancer Relapse after Radiotherapy**  
François Kuonen, Julien Laurent, Chiara Secondini, Girieca Lorusso, Jean-Christophe Stehle, Thierry Rausch, Eveline Faes-van't Hull, Grégory Bieler, Gian-Carlo Alghisi, Reto Schwendener, Snezana Andrejevic-Blant, René-Olivier Mirimanoff, and Curzio Rüegg
- 4375 | **Crenolanib Inhibits the Drug-Resistant PDGFRA D842V Mutation Associated with Imatinib-Resistant Gastrointestinal Stromal Tumors**  
Michael C. Heinrich, Diana Griffith, Arin McKinley, Janice Patterson, Ajia Presnell, Abhijit Ramachandran, and Maria Debiec-Rychter
- 4385 | **Improved Statistical Modeling of Tumor Growth and Treatment Effect in Preclinical Animal Studies with Highly Heterogeneous Responses In Vivo**  
Teemu D. Laajala, Jukka Corander, Niina M. Saarinen, Katja Mäkelä, Saija Savolainen, Mari I. Suominen, Esa Alhoniemi, Sari Mäkelä, Matti Poutanen, and Tero Aittokallio

## IMAGING, DIAGNOSIS, PROGNOSIS

- 4397 | **Conditional Survival after Hepatic Resection for Hepatocellular Carcinoma in Cirrhotic Patients**  
Alessandro Cucchetti, Fabio Piscaglia, Matteo Cescon, Giorgio Ercolani, Eleonora Terzi, Luigi Bolondi, Matteo Zanello, and Antonio D. Pinna

## CANCER THERAPY: CLINICAL

- 4406 | **The Impact of Initial Gefitinib or Erlotinib versus Chemotherapy on Central Nervous System Progression in Advanced Non-Small Cell Lung Cancer with EGFR Mutations**  
Stephanie Heon, Beow Y. Yeap, Neal I. Lindeman, Victoria A. Joshi, Mohit Butaney, Gregory J. Britt, Daniel B. Costa, Michael S. Rabin, David M. Jackman, and Bruce E. Johnson
- 4415 | **Denosumab Induces Tumor Reduction and Bone Formation in Patients with Giant-Cell Tumor of Bone**  
Daniel G. Branstetter, Scott D. Nelson, J. Carlos Manivel, Jean-Yves Blay, Sant Chawla, David M. Thomas, Susie Jun, and Ira Jacobs
- 4425 | **Influence of Smoking on the Pharmacokinetics and Toxicity Profiles of Taxane Therapy**  
Anne-Joy M. de Graan, Walter J. Loos, Lena E. Friberg, Sharyn D. Baker, Jessica M. van der Bol, Leni van Doorn, Erik A.C. Wiemer, Bronno van der Holt, Jaap Verweij, and Ron H.J. Mathijssen  
*See commentary p. 4219*

## PREDICTIVE BIOMARKERS AND PERSONALIZED MEDICINE

- 4433 | **Influence of Polymorphic OATP1B-Type Carriers on the Disposition of Docetaxel**  
Anne-Joy M. de Graan, Cynthia S. Lancaster, Amanda Obaidat, Bruno Hagenbuch, Laure Elens, Lena E. Friberg, Peter de Bruijn, Shuiying Hu, Alice A. Gibson, Gitte H. Bruun, Thomas J. Corydon, Torben S. Mikkelsen, Aisha L. Walker, Guoqing Du, Walter J. Loos, Ron H. N. van Schaik, Sharyn D. Baker, Ron H. J. Mathijssen, and Alex Sparreboom

4441 **Regulatory Polymorphisms in  $\beta$ -Tubulin IIa Are Associated with Paclitaxel-Induced Peripheral Neuropathy**

Luis J. Leandro-García, Susanna Leskelä, Carlos Jara, Henrik Gréen, Elisabeth Åvall-Lundqvist, Heather E. Wheeler, M. Eileen Dolan, Lucia Inglada-Perez, Agnieszka Maliszewska, Aguirre A. de Cubas, Iñaki Comino-Méndez, Veronika Mancikova, Alberto Cascón, Mercedes Robledo, and Cristina Rodríguez-Antona

4449 **Analysis of Receptor Tyrosine Kinase ROS1-Positive Tumors in Non-Small Cell Lung Cancer: Identification of a FIG-ROS1 Fusion**

Victoria M. Rimkunas, Katherine E. Crosby, Daiqiang Li, Yerong Hu, Meghan E. Kelly, Ting-Lei Gu, Jennifer S. Mack, Matthew R. Silver, Xinmin Zhou, and Herbert Haack  
*See commentary p. 4222*

4458 **Outcome of Patients with Platelet-Derived Growth Factor Receptor Alpha-Mutated Gastrointestinal Stromal Tumors in the Tyrosine Kinase Inhibitor Era**

Philippe A. Cassier, Elena Fumagalli, Piotr Rutkowski, Patrick Schöffski, Martine Van Glabbeke, Maria Debiec-Rychter, Jean-François Emile, Florence Duffaud, Javier Martin-Broto, Bruno Landi, Antoine Adenis, François Bertucci, Emmanuelle Bompas, Olivier Bouché, Serge Leyvraz, Ian Judson, Jaap Verweij, Paolo Casali, Jean-Yves Blay, and Peter Hohenberger for the European Organisation for Research and Treatment of Cancer

4465 **A 50-Gene Intrinsic Subtype Classifier for Prognosis and Prediction of Benefit from Adjuvant Tamoxifen**

Stephen K. Chia, Vivien H. Bramwell, Dongsheng Tu, Lois E. Shepherd, Shan Jiang, Tammi Vickery, Elaine Mardis, Samuel Leung, Karen Ung, Kathleen I. Pritchard, Joel S. Parker, Philip S. Bernard, Charles M. Perou, Matthew J. Ellis, and Torsten O. Nielsen

## LETTERS TO THE EDITOR

4473 **Prognostic Value of CD133 Caused by Mutant K-Ras and B-Raf—Letter**

Lorenzo Fornaro, Francesco Crea, Gianluca Masi, Antonello Di Paolo, Caterina Vivaldi, Romano Danesi, and Alfredo Falcone

4474 **Prognostic Value of CD133 Caused by Mutant K-Ras and B-Raf—Response**

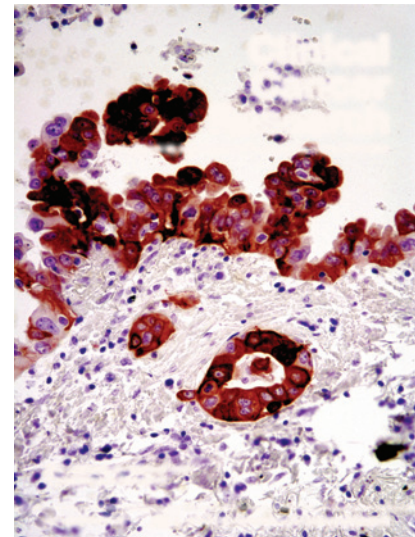
Kristel Kemper and Jan Paul Medema

## CORRECTION

4475 **Correction: RAF265 Inhibits the Growth of Advanced Human Melanoma Tumors**

## ABOUT THE COVER

Fusions of the ROS1 kinase occur in about 1.5% of NSCLC cases. In a subset of these tumors, ROS1 fusion protein and mutant EGFR protein were found to be localized in the same area on serial sections, suggesting that coexpression of the two important therapeutic RTK targets can occur in NSCLC. Immunohistochemical staining of total EGFR protein is shown in a SLC34A2-ROS1 fusion positive NSCLC tumor. For details, see the article by Rimkunas and colleagues on page 4449 of this issue.



# Clinical Cancer Research

**18 (16)**

*Clin Cancer Res* 2012;18:4217-4475.

**Updated version** Access the most recent version of this article at:  
<http://clincancerres.aacrjournals.org/content/18/16>

**E-mail alerts** [Sign up to receive free email-alerts](#) related to this article or journal.

**Reprints and Subscriptions** To order reprints of this article or to subscribe to the journal, contact the AACR Publications Department at [pubs@aacr.org](mailto:pubs@aacr.org).

**Permissions** To request permission to re-use all or part of this article, use this link <http://clincancerres.aacrjournals.org/content/18/16>.  
Click on "Request Permissions" which will take you to the Copyright Clearance Center's (CCC) Rightslink site.