

## Highlights of This Issue 5543

### SPECIAL FEATURES

#### Editorial

- 5545 | **Announcing the ACR Cancer Progress Report 2013**  
Jesse Potash and Kenneth C. Anderson

#### CCR Translations


- 5546 | **Better Performance of CARs Deprived of the PD-1 Brake**  
Aizea Morales-Kastresana, Sara Labiano, José I. Quetglas, and Ignacio Melero  
*See related article, p. 5636*


- 5549 | **Coamplification and Cooperation: Toward Identifying Biologically Relevant Oncogenes**  
Guochang Huang and Bhuvanesh Singh  
*See related article, p. 5580*

#### CCR Drug Updates

- 5552 | **Pertuzumab: Optimizing HER2 Blockade**  
Otto Metzger-Filho, Eric P. Winer, and Ian Krop

#### Molecular Pathways

- 5557 | **Molecular Pathways: Inflammation-Associated Nitric-Oxide Production as a Cancer-Supporting Redox Mechanism and a Potential Therapeutic Target**  
 Elizabeth A. Grimm, Andrew G. Sikora, and Suhendan Ekmekcioglu

- 5564 | **Molecular Pathways: Human Leukocyte Antigen G (HLA-G)**  
 Giuseppe Curigliano, Carmen Criscitiello, Lucia Gelao, and Aron Goldhirsch


#### Review

- 5572 | **The Winning Formulation: The Development of Paclitaxel in Pancreatic Cancer**  
Wen Wee Ma and Manuel Hidalgo

## HUMAN CANCER BIOLOGY

- 5580 | **Integrative Genomics Analysis Identifies Candidate Drivers at 3q26-29 Amplicon in Squamous Cell Carcinoma of the Lung**  
Jing Wang, Jun Qian, Megan D. Hoeksema, Yong Zou, Allan V. Espinosa, S.M. Jamsheer Rahman, Bing Zhang, and Pierre P. Massion  
*See related article, p. 5549*

- 5591 | **Accessory Cells of the Microenvironment Protect Multiple Myeloma from T-Cell Cytotoxicity through Cell Adhesion-Mediated Immune Resistance**  
Sanne J. de Haart, Niels W.C.J. van de Donk, Monique C. Minnema, Julie H. Huang, Tineke Aarts-Riemens, Niels Bovenschen, Huipin Yuan, Richard W.J. Groen, Douglas W. McMillin, Jana Jakubikova, Henk M. Lokhorst, Anton C. Martens, Constantine S. Mitsiades, and Tuna Mutis

- 5602 | **miR-200b and miR-200c as Prognostic Factors and Mediators of Gastric Cancer Cell Progression**  
 Hailin Tang, Min Deng, Yunyun Tang, Xinhua Xie, Jiaoli Guo, Yanan Kong, Feng Ye, Qi Su, and Xiaoming Xie

- 5613 | **Steroidogenic Enzyme AKR1C3 Is a Novel Androgen Receptor-Selective Coactivator that Promotes Prostate Cancer Growth**  
Muralimohan Yepuru, Zhongzhi Wu, Anand Kulkarni, Feng Yin, Christina M. Barrett, Juhyun Kim, Mitchell S. Steiner, Duane D. Miller, James T. Dalton, and Ramesh Narayanan

## CANCER THERAPY: PRECLINICAL

- 5626 | **Targeting CD73 Enhances the Antitumor Activity of Anti-PD-1 and Anti-CTLA-4 mAbs**  
Bertrand Allard, Sandra Pommey, Mark J. Smyth, and John Stagg

- 5636 | **Anti-PD-1 Antibody Therapy Potently Enhances the Eradication of Established Tumors By Gene-Modified T Cells**  
 Liza B. John, Christel Devaud, Connie P.M. Duong, Carmen S. Yong, Paul A. Beavis, Nicole M. Haynes, Melvyn T. Chow, Mark J. Smyth, Michael H. Kershaw, and Phillip K. Darcy  
*See related article, p. 5546*

- 5647 **Identification of Lethal microRNAs Specific for Head and Neck Cancer**  
Marlon Lindenbergh-van der Plas, Sanne R. Martens-de Kemp, Michiel de Maaker, Wessel N. van Wieringen, Bauke Ylstra, Reuven Agami, Francesco Cerisoli, C. René Leemans, Boudewijn J.M. Braakhuis, and Ruud H. Brakenhoff
- 5658 **Pharmacologic Inhibition of Jak2–Stat5 Signaling By Jak2 Inhibitor AZD1480 Potently Suppresses Growth of Both Primary and Castrate-Resistant Prostate Cancer**  
Lei Gu, Zhiyong Liao, David T. Hoang, Ayush Dagvadorj, Shilpa Gupta, Shauna Blackmon, Elyse Ellsworth, Pooja Talati, Benjamin Leiby, Michael Zinda, Costas D. Lallas, Edouard J. Trabulsi, Peter McCue, Leonard Gomella, Dennis Huszar, and Marja T. Nevalainen
- 5675 **CD62L as a Therapeutic Target in Chronic Lymphocytic Leukemia**  
Melinda Burgess, Devinder Gill, Richa Singhanian, Catherine Cheung, Lynne Chambers, Brent A. Renyolds, Louise Smith, Peter Mollee, Nicholas Saunders, and Nigel AJ McMillan
- 5686 **RG7212 Anti-TWEAK mAb Inhibits Tumor Growth through Inhibition of Tumor Cell Proliferation and Survival Signaling and by Enhancing the Host Antitumor Immune Response**  
Xuefeng Yin, Leopoldo Luistro, Hua Zhong, Melissa Smith, Tom Nevins, Kathleen Schostack, Holly Hilton, Tai-An Lin, Theresa Truitt, Denise Biondi, Xiaoqian Wang, Kathryn Packman, Jim Rosinski, Windy Berkofsky-Fessler, Jian-Ping Tang, Saumya Pant, David Geho, Suzana Vega-Harring, Mark DeMario, Hy Levitsky, and Mary Simcox
- 5699 **Inhibition of Tumor Growth and Metastasis in Non–Small Cell Lung Cancer by LY2801653, an Inhibitor of Several Oncokinases, Including MET**  
Wenjuan Wu, Chen Bi, Kelly M. Credille, Jason R. Manro, Victoria L. Peek, Gregory P. Donoho, Lei Yan, John A. Wijsman, S. Betty Yan, and Richard A. Walgren
- 5711 **Preclinical Efficacy of the Anti-Hepatocyte Growth Factor Antibody Ficluzumab in a Mouse Brain Orthotopic Glioma Model Evaluated by Bioluminescence, PET, and MRI**  
Erik S. Mitra, Hua Fan-Minogue, Frank I. Lin, Jason Karamchandani, Venkataraman Sriram, May Han, and Sanjiv S. Gambhir
- 5722 **The mTOR Kinase Inhibitors, CC214-1 and CC214-2, Preferentially Block the Growth of EGFRVIII-Activated Glioblastomas**  
Beatrice Gini, Ciro Zanca, Deliang Guo, Tomoo Matsutani, Kenta Masui, Shiro Ikegami, Huijun Yang, David Nathanson, Genaro R. Villa, David Shackelford, Shaojun Zhu, Kazuhiro Tanaka, Ivan Babic, David Akhavan, Kelly Lin, Alvaro Assuncao, Yuchao Gu, Bruno Bonetti, Deborah S. Mortensen, Shuichan Xu, Heather K. Raymon, Webster K. Cavenee, Frank B. Furnari, C. David James, Guido Kroemer, James R. Heath, Kristen Hege, Rajesh Chopra, Timothy F. Cloughesy, and Paul S. Mischel
- 5733 **REM (Risk of Endometrial Malignancy): A Proposal for a New Scoring System to Evaluate Risk of Endometrial Malignancy**  
Roberto Angioli, Stella Capriglione, Alessia Aloisi, Daniela Luvero, Ester Valentina Cafà, Nella Dugo, Roberto Montero, Carlo De Cicco Nardone, Corrado Terranova, and Francesco Plotti
- 5740 **The G-Protein–Coupled Receptor CLR Is Upregulated in an Autocrine Loop with Adrenomedullin in Clear Cell Renal Cell Carcinoma and Associated with Poor Prognosis**  
Leonid L. Nikitenko, Russell Leek, Stephen Henderson, Nischalan Pillay, Helen Turley, Daniele Generali, Sarah Gunningham, Helen R. Morrin, Andrea Pellagatti, Margaret C.P. Rees, Adrian L. Harris, and Stephen B. Fox

## IMAGING, DIAGNOSIS, PROGNOSIS

## CANCER THERAPY: CLINICAL

5758

**Emergence of Polyclonal FLT3 Tyrosine Kinase Domain Mutations during Sequential Therapy with Sorafenib and Sunitinib in FLT3-ITD-Positive Acute Myeloid Leukemia**

Sharyn D. Baker, Eric I. Zimmerman, Yong-Dong Wang, Shelley Orwick, Douglas S. Zatechka, Jassada Buaboonnam, Geoffrey A. Neale, Scott R. Olsen, Eric J. Enemark, Sheila Shurtleff, Jeffrey E. Rubnitz, Charles G. Mullighan, and Hiroto Inaba

5777

**Association of TP53 Mutational Status and Gender with Survival after Adjuvant Treatment for Stage III Colon Cancer: Results of CALGB 89803**

Robert S. Warren, Chloe E. Atreya, Donna Niedzwiecki, Vivian K. Weinberg, David B. Donner, Robert J. Mayer, Richard M. Goldberg, Carolyn C. Compton, Marlene B. Zuraek, Cynthia Ye, Leonard B. Saltz, and Monica M. Bertagnolli

5788

**Promoter CpG Island Methylation of Genes in Key Cancer Pathways Associates with Clinical Outcome in High-Grade Serous Ovarian Cancer**

Wei Dai, Constanze Zeller, Nahal Masrou, Nadeem Siddiqui, James Paul, and Robert Brown

5798

**Impact of c-MYC Protein Expression on Outcome of Patients with Early-Stage HER2<sup>+</sup> Breast Cancer Treated with Adjuvant Trastuzumab NCCTG (Alliance) N9831**

Amylou C. Dueck, Monica M. Reinholz, Xochiquetzal J. Geiger, Kathleen Tenner, Karla Ballman, Robert B. Jenkins, Darren Riehle, Beiyun Chen, Ann E. McCullough, Nancy E. Davidson, Silvana Martino, George W. Sledge, Peter A. Kaufman, Leila A. Kutteh, Julie Gralow, Lyndsay N. Harris, James N. Ingle, Wilma L. Lingle, and Edith A. Perez

**PREDICTIVE BIOMARKERS AND PERSONALIZED MEDICINE**

5769

**Cumulative Genetic Risk Predicts Platinum/Taxane-Induced Neurotoxicity**

Sarah McWhinney-Glass, Stacey J. Winham, Daniel L. Hertz, Jane Yen Revollo, Jim Paul, Yijing He, Robert Brown, Alison A. Motsinger-Reif, and Howard L. McLeod; For the Scottish Gynaecological Clinical Trials Group

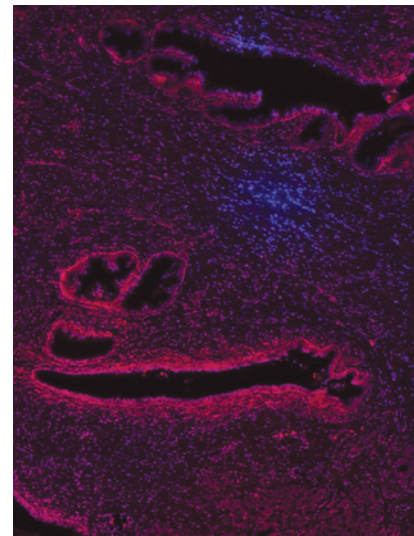
AC icon indicates Author Choice

CME icon indicates that this article is available for continuing medical education credit at <http://cme.aacrjournals.org>

For more information please visit [www.aacrjournals.org](http://www.aacrjournals.org)

**ABOUT THE COVER**

The cover shows a section from the prostate of a patient with Gleason sum 7 prostate cancer. Duolink proximity ligation assay in the section shows strong interaction between AR and AKR1C3 (red). Nucleus was counterstained with DAPI and imaged using a fluorescent microscope. For details, see the article by Yepuru and colleagues on page 5613 of this issue.



# Clinical Cancer Research

**19 (20)**

*Clin Cancer Res* 2013;19:5543-5807.

**Updated version** Access the most recent version of this article at:  
<http://clincancerres.aacrjournals.org/content/19/20>

**E-mail alerts** [Sign up to receive free email-alerts](#) related to this article or journal.

**Reprints and Subscriptions** To order reprints of this article or to subscribe to the journal, contact the AACR Publications Department at [pubs@aacr.org](mailto:pubs@aacr.org).

**Permissions** To request permission to re-use all or part of this article, use this link <http://clincancerres.aacrjournals.org/content/19/20>. Click on "Request Permissions" which will take you to the Copyright Clearance Center's (CCC) Rightslink site.