

## Highlights of This Issue 753

### SPECIAL FEATURES

#### CCR Translations

- 755 | **Predictive Biomarkers to Anti-VEGF Therapy: Progress toward an Elusive Goal**  
Rekha Gyanchandani and Seungwon Kim  
*See article, p. 929*

#### Molecular Pathways

- 758 | **Molecular Pathways: Multimodal Cancer-Killing Mechanisms Employed By Oncolytic Vesiculoviruses**  
Douglas J. Mahoney and David F. Stojdl

#### Review

- 764 | **The Definition of Primary and Secondary Glioblastoma**  
Hiroko Ohgaki and Paul Kleihues

### HUMAN CANCER BIOLOGY

- 773 | **Lactate Dehydrogenase B Is Required for the Growth of KRAS-Dependent Lung Adenocarcinomas**  
Mark L. McClelland, Adam S. Adler, Laura Deming, Ely Cosino, Leslie Lee, Elizabeth M. Blackwood, Margaret Solon, Janet Tao, Li Li, David Shames, Erica Jackson, William F. Forrest, and Ron Firestein
- 785 | **Reciprocal Interactions between Tumor-Associated Macrophages and CD44-Positive Cancer Cells via Osteopontin/CD44 Promote Tumorigenicity in Colorectal Cancer**  
Guanhua Rao, Hongyi Wang, Baowei Li, Li Huang, Danfeng Xue, Xiaohui Wang, Haijing Jin, Jun Wang, Yushan Zhu, Youyong Lu, Lei Du, and Quan Chen
- 798 | **SHP2 Is Overexpressed and Inhibits pSTAT1-Mediated APM Component Expression, T-cell Attracting Chemokine Secretion, and CTL Recognition in Head and Neck Cancer Cells**  
Michael S. Leibowitz, Raghvendra M. Srivastava, Pedro A. Andrade Filho, Ann Marie Egloff, Lin Wang, Raja R. Seethala, Soldano Ferrone, and Robert L. Ferris

- 809 | **Identification of FGFR4 as a Potential Therapeutic Target for Advanced-Stage, High-Grade Serous Ovarian Cancer**  
Tarrik M. Zaid, Tsz-Lun Yeung, Melissa S. Thompson, Cecilia S. Leung, Tom Harding, Ngai-Na Co, Rosie S. Schmandt, Suet-Ying Kwan, Cristian Rodriguez-Aguay, Gabriel Lopez-Berestein, Anil K. Sood, Kwong-Kwok Wong, Michael J. Birrer, and Samuel C. Mok

### CANCER THERAPY: PRECLINICAL

- 821 | **Influence of Human OATP1B1, OATP1B3, and OATP1A2 on the Pharmacokinetics of Methotrexate and Paclitaxel in Humanized Transgenic Mice**  
Evita van de Steeg, Anita van Esch, Els Wagenaar, Kathryn E. Kenworthy, and Alfred H. Schinkel
- 833 | **Blocked Autophagy Using Lysosomotropic Agents Sensitizes Resistant Prostate Tumor Cells to the Novel Akt Inhibitor AZD5363**  
Francois Lamoureux, Christian Thomas, Claire Crafter, Masafumi Kumano, Fan Zhang, Barry R. Davies, Martin E. Gleave, and Amina Zoubeydi
- 845 | **Caspase-Independent Cell Death Is Involved in the Negative Effect of EGF Receptor Inhibitors on Cisplatin in Non-Small Cell Lung Cancer Cells**  
Hirohito Yamaguchi, Jennifer L. Hsu, Chun-Te Chen, Ying-Nai Wang, Ming-Chuan Hsu, Shih-Shin Chang, Yi Du, How-Wen Ko, Roy Herbst, and Mien-Chie Hung
- 855 | **Development and Characterization of HPV-Positive and HPV-Negative Head and Neck Squamous Cell Carcinoma Tumorgrafts**  
Randall J. Kimple, Paul M. Harari, Alexandra D. Torres, Robert Z. Yang, Benjamin J. Soriano, Menggang Yu, Eric A. Armstrong, Grace C. Blitzer, Molly A. Smith, Laurel D. Lorenz, Denis Lee, David T. Yang, Timothy M. McCulloch, Gregory K. Hartig, and Paul F. Lambert

865 **Topotecan and Doxorubicin Combination to Treat Recurrent Ovarian Cancer: The Influence of Drug Exposure Time and Delivery Systems to Achieve Optimum Therapeutic Activity**  
Nilesh A. Patankar, Julia Pritchard, Mariska van Grinsven, Maryam Osooly, and Marcel B. Bally

920 **First-in-Man Phase I Study of GC33, a Novel Recombinant Humanized Antibody Against Glypican-3, in Patients with Advanced Hepatocellular Carcinoma**  
Andrew X. Zhu, Philip J. Gold, Anthony B. El-Khoueiry, Thomas A. Abrams, Hideo Morikawa, Norihisa Ohishi, Toshihiko Ohtomo, and Philip A. Philip

## IMAGING, DIAGNOSIS, PROGNOSIS

878 **DNA Methylation as an Adjunct to Histopathology to Detect Prevalent, Inconspicuous Dysplasia and Early-Stage Neoplasia in Barrett's Esophagus**  
Muhammad A. Alvi, Xinxue Liu, Maria O'Donovan, Richard Newton, Lorenz Wernisch, Nicholas B. Shannon, Kareem Shariff, Massimiliano di Pietro, Jacques J.G.H.M. Bergman, Krish Ragunath, and Rebecca C. Fitzgerald

889 **The Immune Signature of CD8<sup>+</sup>CCR7<sup>+</sup> T Cells in the Peripheral Circulation Associates with Disease Recurrence in Patients with HNSCC**  
Malgorzata Czystowska, William Gooding, Mirosław J. Szczepanski, Andres Lopez-Abaitero, Robert L. Ferris, Jonas T. Johnson, and Theresa L. Whiteside

## CANCER THERAPY: CLINICAL

900 **A Phase I/II Trial of Pazopanib in Combination with Lapatinib in Adult Patients with Relapsed Malignant Glioma**  
David A. Reardon, Morris D. Groves, Patrick Y. Wen, Louis Nabors, Tom Mikkelsen, Steve Rosenfeld, Jeffrey Raizer, Jorge Barriuso, Roger E. McLendon, A. Benjamin Suttle, Bo Ma, C. Martin Curtis, Mohammed M. Dar, and Johann de Bono

909 **First-in-Human Phase I Trial of Two Schedules of OSI-930, a Novel Multikinase Inhibitor, Incorporating Translational Proof-of-Mechanism Studies**  
Timothy A. Yap, Hendrik-Tobias Arkenau, D. Ross Camidge, Suzanne George, Natalie J. Serkova, Stephen J. Gwyther, Jennifer L. Spratlin, Rohit Lal, James Spicer, Nandita M. Desouza, Martin O. Leach, Jon Chick, Srinivasu Poondru, Ramesh Boinpally, Richard Gedrich, Katie Brock, Andrew Stephens, S. Gail Eckhardt, Stan B. Kaye, George Demetri, and Michelle Scurr

## PREDICTIVE BIOMARKERS AND PERSONALIZED MEDICINE

929 **Predictive Impact of Circulating Vascular Endothelial Growth Factor in Four Phase III Trials Evaluating Bevacizumab**  
Priti S. Hegde, Adrian M. Jubb, Dafeng Chen, Nicole F. Li, Y. Gloria Meng, Coen Bernaards, Rebecca Elliott, Stefan J. Scherer, and Daniel S. Chen  
*See commentary, p.755*

938 **Increased CDA Expression/Activity in Males Contributes to Decreased Cytidine Analog Half-Life and Likely Contributes to Worse Outcomes with 5-Azacytidine or Decitabine Therapy**  
Reda Z. Mahfouz, Ania Jankowska, Quteba Ebrahim, Xiaorong Gu, Valeria Visconte, Ali Tabarroki, Pramod Terse, Joseph Covey, Kenneth Chan, Yonghua Ling, Kory J. Engelke, Mikkael A. Sekeres, Ramon Tiu, Jaroslaw Maciejewski, Tomas Radivoyevitch, and Yogen Sauntharajah

## LETTERS TO THE EDITOR

949 **Long-term Prospective Population PK Study in GIST Patients—Letter**  
Etienne Chatelut, Peggy Gandia, Verena Gotta, and Nicolas Widmer

950 **Long-term Prospective Population PK Study in GIST Patients—Response**  
Ron H.J. Mathijssen, Peter de Bruijn, Karel Eechoute, and Alex Sparreboom

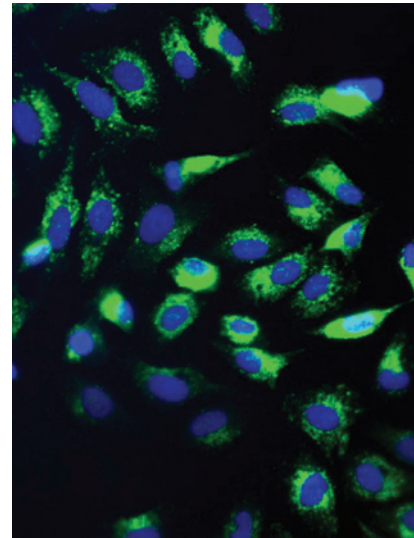
## CORRECTION

951 **Correction: Redirecting Gene-Modified T Cells toward Various Cancer Types Using Tagged Antibodies**

---

## ABOUT THE COVER

The image displays a human prostate cell line (PC-3) that has been stained with antibodies against the autophagy marker Light Chain 3 (LC3; green) after rapamycin treatment. During autophagy, LC3-I is converted to LC3-II through lipidation by a ubiquitin-like system involving Atg7 and Atg3 that allows for LC3 to become associated with autophagic vesicles, as shown by green punctea. Tumor cell nuclei are visualized by DAPI (blue). For details, see the article by Lamoureux and colleagues on page 833 of this issue.



# Clinical Cancer Research

**19 (4)**

*Clin Cancer Res* 2013;19:753-951.

**Updated version** Access the most recent version of this article at:  
<http://clincancerres.aacrjournals.org/content/19/4>

**E-mail alerts** [Sign up to receive free email-alerts](#) related to this article or journal.

**Reprints and Subscriptions** To order reprints of this article or to subscribe to the journal, contact the AACR Publications Department at [pubs@aacr.org](mailto:pubs@aacr.org).

**Permissions** To request permission to re-use all or part of this article, use this link <http://clincancerres.aacrjournals.org/content/19/4>. Click on "Request Permissions" which will take you to the Copyright Clearance Center's (CCC) Rightslink site.