

**Highlights of This Issue 4731**

**SPECIAL FEATURES**

**CCR Translations**

**4733 Prostate Cancer SubtyPING Biomarkers and Outcome: Is Clarity EmERGING?**

Steven C. Smith and Scott A. Tomlins  
See related article, p. 4904

**4737 Twisting and Ironing: Doxorubicin Cardiotoxicity by Mitochondrial DNA Damage**

Karin C. Nitiss and John L. Nitiss  
See related article, p. 4873

**Molecular Pathways**

**4740 Molecular Pathways: Targeting RAC-p21-Activated Serine-Threonine Kinase Signaling in RAS-Driven Cancers**



Nicole M. Baker, Hoi Yee Chow, Jonathan Chernoff, and Channing J. Der

**CANCER THERAPY: CLINICAL**

**4747 Phase I Dose-Escalation Study of MEDI-573, a Bispecific, Antiligand Monoclonal Antibody against IGF1 and IGF1R, in Patients with Advanced Solid Tumors**



Paul Haluska, Michael Menefee, Elizabeth R. Plimack, Jonathan Rosenberg, Donald Northfelt, Theresa LaVallee, Li Shi, Xiang-Qing Yu, Patricia Burke, Jaiqi Huang, Jaye Viner, Jennifer McDevitt, and Patricia LoRusso

**4758 Is the "3+3" Dose-Escalation Phase I Clinical Trial Design Suitable for Therapeutic Cancer Vaccine Development? A Recommendation for Alternative Design**

Osama E. Rahma, Emily Gammoh, Richard M. Simon, and Samir N. Khleif

**4768 The Role of Age on Dose-Limiting Toxicities in Phase I Dose-Escalation Trials**

A. Schwandt, P.J. Harris, S. Hunsberger, A. Deleporte, G.L. Smith, D. Vulih, B.D. Anderson, and S.P. Ivy

**4776 Phase I Study of RGB-286638, A Novel, Multitargeted Cyclin-Dependent Kinase Inhibitor in Patients with Solid Tumors**

Diane A.J. van der Biessen, Herman Burger, Peter de Bruijn, Cor H.J. Lamers, Nicole Naus, Hannes Loferer, Erik A.C. Wiemer, Ron H.J. Mathijssen, and Maja J.A. de Jonge

**PERSONALIZED MEDICINE AND IMAGING**

**4784 A Three-microRNA Signature Predicts Responses to Platinum-Based Doublet Chemotherapy in Patients with Lung Adenocarcinoma**

Motonobu Saito, Kouya Shiraishi, Kenji Matsumoto, Aaron J. Schetter, Hiroko Ogata-Kawata, Naoto Tsuchiya, Hideo Kunitoh, Hiroshi Nokihara, Shun-ichi Watanabe, Koji Tsuta, Kensuke Kumamoto, Seiichi Takenoshita, Jun Yokota, Curtis C. Harris, and Takashi Kohno

**4794 Clinical Significance of EpCAM mRNA-Positive Circulating Tumor Cells in Hepatocellular Carcinoma by an Optimized Negative Enrichment and qRT-PCR-Based Platform**

Wei Guo, Xin-Rong Yang, Yun-Fan Sun, Min-Na Shen, Xiao-Lu Ma, Jiong Wu, Chun-Yan Zhang, Yan Zhou, Yang Xu, Bo Hu, Xin Zhang, Jian Zhou, and Jia Fan

**4806 Monitoring Reversal of MET-Mediated Resistance to EGFR Tyrosine Kinase Inhibitors in Non-Small Cell Lung Cancer Using 3'-Deoxy-3'-[<sup>18</sup>F]-Fluorothymidine Positron Emission Tomography**

Francesca Iommelli, Viviana De Rosa, Sara Gargiulo, Mariarosaria Panico, Marcello Monti, Adelaide Greco, Matteo Gramanzini, Giovanni Ortosecco, Rosa Fonti, Arturo Brunetti, and Silvana Del Vecchio

**4816 Functional Ex Vivo Assay to Select Homologous Recombination-Deficient Breast Tumors for PARP Inhibitor Treatment**

Kishan A.T. Naipal, Nicole S. Verkaik, Najim Ameziane, Carolien H.M. van Deurzen, Petra ter Brugge, Matty Meijers, Anieta M. Sieuwerts, John W. Martens, Mark J. O'Connor, Harry Vrieling, Jan H.J. Hoeijmakers, Jos Jonkers, Roland Kanaar, Johan P. de Winter, Maaikje P. Vreeswijk, Agnes Jager, and Dik C. van Gent

# Table of Contents

**4827** Personalized Medicine for Patients with Advanced Cancer in the Phase I Program at MD Anderson: Validation and Landmark Analyses  
Apostolia-Maria Tsimberidou, Sijin Wen, David S. Hong, Jennifer J. Wheeler, Gerald S. Falchook, Siqing Fu, Sarina Piha-Paul, Aung Naing, Filip Janku, Kenneth Aldape, Yang Ye, Razelle Kurzrock, and Donald Berry

**4837** Systematically Defining Single-Gene Determinants of Response to Neoadjuvant Chemotherapy Reveals Specific Biomarkers  
Agnieszka K. Witkiewicz, Uthra Balaji, and Erik S. Knudsen

## CANCER THERAPY: PRECLINICAL

**4849** PI3K/mTOR Inhibition Markedly Potentiates HDAC Inhibitor Activity in NHL Cells through BIM- and MCL-1-Dependent Mechanisms *In Vitro* and *In Vivo*  
Mohamed Rahmani, Mandy Mayo Aust, Elisa C. Benson, LaShanale Wallace, Jonathan Friedberg, and Steven Grant

**4861** On-Target Effect of FK866, a Nicotinamide Phosphoribosyl Transferase Inhibitor, by Apoptosis-Mediated Death in Chronic Lymphocytic Leukemia Cells  
Iris Gehrke, Eric D.J. Bouchard, Sara Beiggi, Armando G. Poepl, James B. Johnston, Spencer B. Gibson, and Versha Banerji

**4873** Mitochondrial Topoisomerase I (Top1mt) Is a Novel Limiting Factor of Doxorubicin Cardiotoxicity  
Salim Khiati, Ilaria Dalla Rosa, Carole Sourbier, Xuefei Ma, V. Ashutosh Rao, Leonard M. Neckers, Hongliang Zhang, and Yves Pommier  
*See related commentary, p. 4737*

**4882** Demethylating Drugs as Novel Analgesics for Cancer Pain  
Chi T. Viet, Dongmin Dang, Yi Ye, Kentaro Ono, Ronald R. Campbell, and Brian L. Schmidt

## BIOLOGY OF HUMAN TUMORS

**4894** Novel *MSH6* Mutations in Treatment-Naïve Glioblastoma and Anaplastic Oligodendroglioma Contribute to Temozolomide Resistance Independently of *MGMT* Promoter Methylation  
Stephanie A. Nguyen, Owen D.M. Stechishin, H. Artee Luchman, Xueqing Q. Lun, Donna L. Senger, Stephen M. Robbins, J. Gregory Cairncross, and Samuel Weiss

**4904** SPINK1 Protein Expression and Prostate Cancer Progression  
Richard Flavin, Andreas Pettersson, Whitney K. Hendrickson, Michelangelo Fiorentino, Stephen Finn, Lauren Kunz, Gregory L. Judson, Rosina Lis, Dyane Bailey, Christopher Fiore, Elizabeth Nuttall, Neil E. Martin, Edward Stack, Kathryn L. Penney, Jennifer R. Rider, Jennifer Sinnott, Christopher Sweeney, Howard D. Sesso, Katja Fall, Edward Giovannucci, Philip Kantoff, Meir Stampfer, Massimo Loda, and Lorelei A. Mucci  
*See related commentary, p. 4733*

**4912** Genomic and Transcriptional Alterations in Lung Adenocarcinoma in Relation to Smoking History  
Anna Karlsson, Markus Ringnér, Martin Lauss, Johan Botling, Patrick Micke, Maria Planck, and Johan Staaf

**4925** Evidence for Molecular Differences in Prostate Cancer between African American and Caucasian Men  
Francesca Khani, Juan Miguel Mosquera, Kyung Park, Mirjam Blattner, Catherine O'Reilly, Theresa Y. MacDonald, Zhengming Chen, Abhishek Srivastava, Ashutosh K. Tewari, Christopher E. Barbieri, Mark A. Rubin, and Brian D. Robinson

**4935** Concurrent Alterations in *TERT*, *KDM6A*, and the BRCA Pathway in Bladder Cancer  
Michael L. Nickerson, Garrett M. Dancik, Kate M. Im, Michael G. Edwards, Sevilay Turan, Joseph Brown, Christina Ruiz-Rodriguez, Charles Owens, James C. Costello, Guangwu Guo, Shirley X. Tsang, Yingrui Li, Quan Zhou, Zhiming Cai, Lee E. Moore, M. Scott Lucia, Michael Dean, and Dan Theodorescu

**4949** T-box Transcription Factor Brachyury Is Associated with Prostate Cancer Progression and Aggressiveness  
Filipe Pinto, Nelma Pértega-Gomes, Márcia S. Pereira, José R. Vizcaíno, Pedro Monteiro, Rui M. Henrique, Fátima Baltazar, Raquel P. Andrade, and Rui M. Reis

# Table of Contents

**4962** Excess of Proximal Microsatellite-Stable Colorectal Cancer in African Americans from a Multiethnic Study

Rosa M. Xicola, Molly Gagnon, Julia R. Clark, Timothy Carroll, Weihua Gao, Christian Fernandez, Dragana Mijic, James B. Rawson, Ashley Janoski, Cenk K. Pusatcioglu, Priyanka Rajaram, Adam B. Gluskin, Maureen Regan, Vivek Chaudhry, Herand Abcarian, Jennifer Blumetti, Jose Cintron, Joshua Melson, Hui Xie, Grace Guzman, Rajyasree Emmadi, Victoria Alagiozian-Angelova, Sonia S. Kupfer, Carol Braunschweig, Nathan A. Ellis, and Xavier Llor

**4972** Androstenedione Is the Preferred Androgen Source in Hormone Refractory Prostate Cancer—Response

Christopher M. Hovens, Matthew K.H. Hong, and Niall M. Corcoran

## CORRECTION

**4974** Correction: Prevalence and Clinical Implications of Epstein–Barr Virus Infection in *De Novo* Diffuse Large B-Cell Lymphoma in Western Countries

## LETTERS TO THE EDITOR

**4971** Androstenedione Is the Preferred Androgen Source in Hormone Refractory Prostate Cancer—Letter

Nima Sharifi and Richard J. Auchus

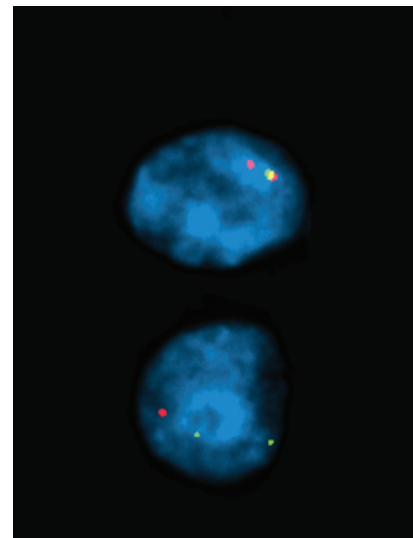
 AC icon indicates Author Choice

 CME icon indicates that this article is available for continuing medical education credit at <http://cme.aacrjournals.org>

For more information please visit [www.aacrjournals.org](http://www.aacrjournals.org)

## ABOUT THE COVER

The cover shows results from FISH analysis of prostate cancer cells with ERG rearrangement (top; loss of one green signal indicating translocation through deletion) and hemizygous PTEN deletion (bottom; loss of one red signal with preservation of green centromeric signals). For details, see the article by Khani and colleagues on page 4925 of this issue.



# Clinical Cancer Research

**20 (18)**

*Clin Cancer Res* 2014;20:4731-4974.

**Updated version** Access the most recent version of this article at:  
<http://clincancerres.aacrjournals.org/content/20/18>

**E-mail alerts** [Sign up to receive free email-alerts](#) related to this article or journal.

**Reprints and Subscriptions** To order reprints of this article or to subscribe to the journal, contact the AACR Publications Department at [pubs@aacr.org](mailto:pubs@aacr.org).

**Permissions** To request permission to re-use all or part of this article, use this link <http://clincancerres.aacrjournals.org/content/20/18>.  
Click on "Request Permissions" which will take you to the Copyright Clearance Center's (CCC) Rightslink site.