

Highlights of This Issue 4025**SPECIAL FEATURES****CCR 20th Anniversary Commentary**

- 4027** CCR 20th Anniversary Commentary: Simpson's Paradox and Neoadjuvant Trials
Lisa A. Carey

CCR Translations

- 4030** Cancer Immunotherapy: More Is (Much) Better
Yosef Yarden and Michael Sela
See related article, p. 4110
- 4033** SLFN11: Achilles' Heel or Troublemaker
Heinrich Kovar
See related article, p. 4184

CCR Perspectives in Drug Approval

- 4035** FDA Approval: Blinatumomab
 Donna Przepiorka, Chia-Wen Ko, Albert Deisseroth, Carolyn L. Yancey, Reyes Candau-Chacon, Haw-Jyh Chiu, Brenda J. Gehrke, Candace Gomez-Broughton, Robert C. Kane, Susan Kirshner, Nitin Mehrotra, Tiffany K. Ricks, Deborah Schmiel, Pengfei Song, Ping Zhao, Qing Zhou, Ann T. Farrell, and Richard Pazdur

Molecular Pathways

- 4040** Molecular Pathways: At the Crossroads of Cancer Epigenetics and Immunotherapy
Michele Maio, Alessia Covre, Elisabetta Fratta, Anna Maria Di Giacomo, Pietro Taverna, Pier Giorgio Natali, Sandra Coral, and Luca Sigalotti

CANCER THERAPY: CLINICAL

- 4048** Effects of Adjuvant Sorafenib and Sunitinib on Cardiac Function in Renal Cell Carcinoma Patients without Overt Metastases: Results from ASSURE, ECOG 2805
Naomi B. Haas, Judith Manola, Bonnie Ky, Keith T. Flaherty, Robert G. Uzzo, Christopher J. Kane, Michael Jewett, Lori Wood, Christopher G. Wood, Michael B. Atkins, Janice J. Dutcher, George Wilding, and Robert S. DiPaola

- 4055** A Phase I Trial of the Anti-KIR Antibody IPH2101 and Lenalidomide in Patients with Relapsed/Refractory Multiple Myeloma
Don M. Benson Jr, Adam D. Cohen, Sundar Jagannath, Nikhil C. Munshi, Gary Spitzer, Craig C. Hofmeister, Yvonne A. Efebera, Pascale Andre, Robert Zerbib, and Michael A. Caligiuri

- 4062** Bioactivity and Safety of IL13R α 2-Redirected Chimeric Antigen Receptor CD8⁺ T Cells in Patients with Recurrent Glioblastoma
Christine E. Brown, Behnam Badie, Michael E. Barish, Lihong Weng, Julie R. Ostberg, Wen-Chung Chang, Araceli Naranjo, Renate Starr, Jamie Wagner, Christine Wright, Yubo Zhai, James R. Bading, Julie A. Ressler, Jana Portnow, Massimo D'Apuzzo, Stephen J. Forman, and Michael C. Jensen

PERSONALIZED MEDICINE AND IMAGING

- 4073** Myeloid-Derived Suppressor Cells as an Immune Parameter in Patients with Concurrent Sunitinib and Stereotactic Body Radiotherapy
Hui-Ming Chen, Ge Ma, Neil Gildener-Leapman, Samuel Eisenstein, Brian A. Coakley, Junko Ozao, John Mandeli, Celia Divino, Myron Schwartz, Max Sung, Robert Ferris, Johnny Kao, Lu-Hai Wang, Ping-Ying Pan, Eric C. Ko, and Shu-Hsia Chen
- 4086** Polymorphism at 19q13.41 Predicts Breast Cancer Survival Specifically after Endocrine Therapy
Sofia Khan, Rainer Fagerholm, Sajjad Rafiq, William Tapper, Kristiina Aittomäki, Jianjun Liu, Carl Blomqvist, Diana Eccles, and Heli Nevanlinna

CANCER THERAPY: PRECLINICAL

- 4097** Aurora A Kinase Inhibition Selectively Synergizes with Histone Deacetylase Inhibitor through Cytokinesis Failure in T-cell Lymphoma
Kelly M. Zullo, Yige Guo, Laurence Cooke, Xavier Jirau-Serrano, Michael Mangone, Luigi Scotto, Jennifer E. Amengual, Yinghui Mao, Renu Nandakumar, Serge Cremers, Jimmy Duong, Daruka Mahadevan, and Owen A. O'Connor
- 4110** Pan-HER, an Antibody Mixture Simultaneously Targeting EGFR, HER2, and HER3, Effectively Overcomes Tumor Heterogeneity and Plasticity
Helle J. Jacobsen, Thomas T. Poulsen, Anna Dahlman, Ida Kjær, Klaus Koefoed, Jette W. Sen, Dietmar Weilguny, Bolette Bjerregaard, Christina R. Andersen, Ivan D. Horak, Mikkel W. Pedersen, Michael Kragh, and Johan Lantto
See related commentary, p. 4030



Table of Contents

- 4123** Inhibition of Survivin with YM155 Induces Durable Tumor Response in Anaplastic Thyroid Cancer
Amit Mehta, Lisa Zhang, Myriem Boufraqueh, Yi Liu-Chittenden, Yaqin Zhang, Dhaval Patel, Sean Davis, Avi Rosenberg, Kris Ylaya, Rachel Aufforth, Zhuyin Li, Min Shen, and Electron Kebebew
- 4133** Antiandrogens Inhibit ABCB1 Efflux and ATPase Activity and Reverse Docetaxel Resistance in Advanced Prostate Cancer
Yezi Zhu, Chengfei Liu, Cameron Armstrong, Wei Lou, Amandeep Sandher, and Allen C. Gao
- 4143** Inhibition of JNK Sensitizes Hypoxic Colon Cancer Cells to DNA-Damaging Agents
Irina A. Vasilevskaya, Muthu Selvakumaran, Lucia Cabal Hierro, Sara R. Goldstein, Jeffrey D. Winkler, and Peter J. O'Dwyer
- 4153** Maintenance Treatment with Cetuximab and BAY86-9766 Increases Antitumor Efficacy of Irinotecan plus Cetuximab in Human Colorectal Cancer Xenograft Models
Teresa Troiani, Stefania Napolitano, Giulia Martini, Erika Martinelli, Claudia Cardone, Nicola Normanno, Donata Vitagliano, Floriana Morgillo, Francesca Fenizia, Matilde Lambiase, Luigi Formisano, Roberto Bianco, Davide Ciardiello, and Fortunato Ciardiello
- 4165** Anti-EFNA4 Calicheamicin Conjugates Effectively Target Triple-Negative Breast and Ovarian Tumor-Initiating Cells to Result in Sustained Tumor Regressions
Marc Damelin, Alexander Bankovich, Albert Park, Jorge Aguilar, Wade Anderson, Marianne Santaguida, Monette Aujay, Sarah Fong, Kiran Khandke, Virginia Pulito, Elana Ernstoff, Paul Escarpe, Jeffrey Bernstein, Marybeth Pysz, Wenyan Zhong, Erik Upeslakis, Judy Lucas, Justin Lucas, Timothy Nichols, Kathryn Loving, Orit Foord, Johannes Hampl, Robert Stull, Frank Barletta, Hadi Falahatpisheh, Puja Sapra, Hans-Peter Gerber, and Scott J. Dylla
- 4184** *SLFN11* Is a Transcriptional Target of EWS-FLI1 and a Determinant of Drug Response in Ewing Sarcoma
Sai-Wen Tang, Sven Bilke, Liang Cao, Junko Murai, Fabricio G. Sousa, Mihoko Yamada, Vinodh Rajapakse, Sudhir Varma, Lee J. Helman, Javed Khan, Paul S. Meltzer, and Yves Pommier
See related commentary, p. 4033
- 4194** Gene Expression Profiling of Desmoid Tumors by cDNA Microarrays and Correlation with Progression-Free Survival
Sébastien Salas, Celine Brulard, Philippe Terrier, Dominique Ranchere-Vince, Agnes Neuville, Louis Guillou, Marick Lae, Agnes Leroux, Olivier Verola, Kurtz Jean-Emmanuel, Sylvie Bonvalot, Jean-Yves Blay, Axel Le Cesne, Alain Aurias, Jean-Michel Coindre, and Frederic Chibon
- 4201** Whole Exome Sequencing Reveals the Order of Genetic Changes during Malignant Transformation and Metastasis in a Single Patient with NF1-plexiform Neurofibroma
Angela C. Hirbe, Sonika Dahiya, Christopher A. Miller, Tiandao Li, Robert S. Fulton, Xiaochun Zhang, Sandra McDonald, Katherine DeSchryver, Eric J. Duncavage, Jessica Walrath, Karlyne M. Reilly, Haley J. Abel, Melike Pekmezci, Arie Perry, Timothy J. Ley, and David H. Gutmann
- 4212** Sunitinib Treatment Exacerbates Intratumoral Heterogeneity in Metastatic Renal Cancer
Grant D. Stewart, Fiach C. O'Mahony, Alexander Laird, Lel Eory, Alexander L.R. Lubbock, Alan Mackay, Jyoti Nanda, Marie O'Donnell, Peter Mullen, S. Alan McNeill, Antony C.P. Riddick, Daniel Berney, Axel Bex, Michael Aitchison, Ian M. Overton, David J. Harrison, and Thomas Powles
- 4224** Intratumoral CD14⁺ Cells and Circulating CD14⁺HLA-DR^{lo/neg} Monocytes Correlate with Decreased Survival in Patients with Clear Cell Renal Cell Carcinoma
Michael P. Gustafson, Yi Lin, Jonathan S. Bleeker, Deepti Warad, Matthew K. Tollefson, Paul L. Crispen, Peggy A. Bulur, Susan M. Harrington, Rebecca R. Laborde, Dennis A. Gastineau, Bradley C. Leibovich, John C. Cheville, Eugene D. Kwon, and Allan B. Dietz
- 4234** Serum miR-21, miR-29a, and miR-125b Are Promising Biomarkers for the Early Detection of Colorectal Neoplasia
Atsushi Yamada, Takahiro Horimatsu, Yoshinaga Okugawa, Naoshi Nishida, Hajime Honjo, Hiroshi Ida, Tadayuki Kou, Toshihiro Kusaka, Yu Sasaki, Makato Yagi, Takuma Higurashi, Norio Yukawa, Yusuke Amanuma, Osamu Kikuchi, Manabu Muto, Yoshiyuki Ueno, Atsushi Nakajima, Tsutomu Chiba, C. Richard Boland, and Ajay Goel

BIOLOGY OF HUMAN TUMORS

- 4174** Genetics and Prognostication in Splenic Marginal Zone Lymphoma: Revelations from Deep Sequencing
Marina Parry, Matthew J.J. Rose-Zerilli, Viktor Ljungström, Jane Gibson, Jun Wang, Renata Walewska, Helen Parker, Anton Parker, Zadie Davis, Anne Gardiner, Neil McIver-Brown, Christina Kalpadakis, Alikei Xochelli, Achilles Anagnostopoulos, Claudia Fazi, David Gonzalez de Castro, Claire Dearden, Guy Pratt, Richard Rosenquist, Margaret Ashton-Key, Francesco Forconi, Andrew Collins, Paolo Ghia, Estella Matutes, Gerassimos Pangalis, Kostas Stamatopoulos, David Oscier, and Jonathan C. Strefford

Table of Contents

CORRECTIONS

4243 Correction: PID1 (NYGGF4), a New Growth-Inhibitory Gene in Embryonal Brain Tumors and Gliomas

4244 Correction: Replication of Genetic Polymorphisms Reported to Be Associated with Taxane-Related Sensory Neuropathy in Patients with Early Breast Cancer Treated with Paclitaxel—Letter

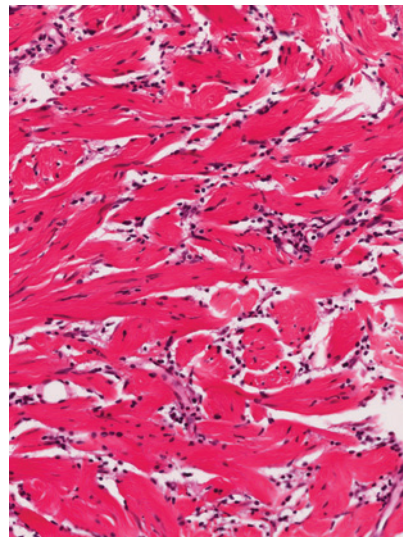
 AC icon indicates Author Choice

 CME icon indicates that this article is available for continuing medical education credit at <http://cme.aacrjournals.org>

For more information please visit www.aacrjournals.org

ABOUT THE COVER

The cover shows a section of a benign peripheral nerve sheath tumor (plexiform neurofibroma) from a patient with neurofibromatosis type 1 (NF1). Hematoxylin and eosin staining reveals the abundant collagen deposition in this tumor. For details, see the article by Hirbe and colleagues on page 4201 of this issue.



Clinical Cancer Research

21 (18)

Clin Cancer Res 2015;21:4025-4244.

Updated version Access the most recent version of this article at:
<http://clincancerres.aacrjournals.org/content/21/18>

E-mail alerts [Sign up to receive free email-alerts](#) related to this article or journal.

Reprints and Subscriptions To order reprints of this article or to subscribe to the journal, contact the AACR Publications Department at pubs@aacr.org.

Permissions To request permission to re-use all or part of this article, use this link <http://clincancerres.aacrjournals.org/content/21/18>. Click on "Request Permissions" which will take you to the Copyright Clearance Center's (CCC) Rightslink site.