


Highlights of This Issue 2597

SPECIAL FEATURES

CCR Translations

- 2599** Is There a Future for AKT Inhibitors in the Treatment of Cancer?
Valerie M. Jansen, Ingrid A. Mayer, and Carlos L. Arteaga
See related article, p. 2650
- 2602** Neoantigen: A Long March toward Cancer Immunotherapy
Yang Liu
See related article, p. 2734


Molecular Pathways

- 2605** Molecular Pathways: Targeting the PI3K Pathway in Cancer—BET Inhibitors to the Rescue
 Elias E. Stratikopoulos and Ramon E. Parsons

CCR Focus

- 2612** Phase I Testing: 60 Years in the Making
Susan E. Bates
- 2613** Dose Finding of Small-Molecule Oncology Drugs: Optimization throughout the Development Life Cycle
Pasi A. Jänne, Geoffrey Kim, Alice T. Shaw, Rajeshwari Sridhara, Richard Pazdur, and Amy E. McKee
- 2618** Nonclinical Evaluations of Small-Molecule Oncology Drugs: Integration into Clinical Dose Optimization and Toxicity Management
Donna M. Dambach, Natalie E. Simpson, Thomas W. Jones, Richard J. Brennan, Richard Pazdur, and Todd R. Palmby
- 2623** Rendering the 3 + 3 Design to Rest: More Efficient Approaches to Oncology Dose-Finding Trials in the Era of Targeted Therapy
Lei Nie, Eric H. Rubin, Nitin Mehrotra, José Pinheiro, Laura L. Fernandes, Amit Roy, Stuart Bailey, and Dinesh P. de Alwis
- 2630** Lessons Learned: Dose Selection of Small Molecule-Targeted Oncology Drugs
Julie M. Bullock, Atiqur Rahman, and Qi Liu

CANCER THERAPY: CLINICAL

- 2639** Low Cancer Stem Cell Marker Expression and Low Hypoxia Identify Good Prognosis Subgroups in HPV(–) HNSCC after Postoperative Radiochemotherapy: A Multicenter Study of the DTK-ROG
Annett Linge, Steffen Löck, Volker Gudziol, Alexander Nowak, Fabian Lohaus, Cläre von Neubeck, Martin Jütz, Amir Abdollahi, Jürgen Debus, Inge Tinhofer, Volker Budach, Ali Sak, Martin Stuschke, Panagiotis Balermipas, Claus Rödel, Melanie Avlar, Anca-Ligia Grosu, Christine Bayer, Claus Belka, Steffi Pigorsch, Stephanie E. Combs, Stefan Welz, Daniel Zips, Frank Buchholz, Daniela E. Aust, Gustavo B. Baretton, Howard D. Thames, Anna Dubrovskaya, Jan Alsner, Jens Overgaard, Michael Baumann, and Mechthild Krause for the DTK-ROG
- 2650** A Phase I Study of the AKT Inhibitor MK-2206 in Combination with Hormonal Therapy in Postmenopausal Women with Estrogen Receptor-Positive Metastatic Breast Cancer
 Cynthia X. Ma, Cesar Sanchez, Feng Gao, Robert Crowder, Michael Naughton, Timothy Pluard, Allison Creekmore, Zhanfang Guo, Jeremy Hoog, A. Craig Lockhart, Austin Doyle, Charles Erlichman, and Matthew J. Ellis
See related commentary, p. 2599
- 2659** Phase I Study of an AKT Inhibitor (MK-2206) Combined with Lapatinib in Adult Solid Tumors Followed by Dose Expansion in Advanced HER2⁺ Breast Cancer
Kari B. Wisinski, Amye J. Tevaarwerk, Mark E. Burkard, Murtuza Rampurwala, Jens Eickhoff, Maria C. Bell, Jill M. Kolesar, Christopher Flynn, and Glenn Liu

PERSONALIZED MEDICINE AND IMAGING

- 2668** Voxel Level Radiologic-Pathologic Validation of Restriction Spectrum Imaging Cellularity Index with Gleason Grade in Prostate Cancer
Ghiam Yamin, Natalie M. Schenker-Ahmed, Ahmed Shabaik, Dennis Adams, Hauke Bartsch, Joshua Kuperman, Nathan S. White, Rebecca A. Rakow-Penner, Kevin McCammack, J. Kellogg Parsons, Christopher J. Kane, Anders M. Dale, and David S. Karow

Table of Contents

2675 Integrated Analysis of PTEN and p4EBP1 Protein Expression as Predictors for pCR in HER2-

Positive Breast Cancer

Sibylle Loibl, Silvia Darb-Esfahani, Jens Huober, Alexander Klimowicz, Jenny Furlanetto, Bianca Lederer, Arndt Hartmann, Holger Eidtmann, Berit Pfitzner, Peter A. Fasching, Katharina Tiemann, Christian Jackisch, Keyur Mehta, Gunter von Minckwitz, Michael Untch, and Carsten Denkert

CANCER THERAPY: PRECLINICAL

2684 The Addition of the BTK Inhibitor Ibrutinib to Anti-CD19 Chimeric Antigen Receptor T Cells (CART19) Improves Responses against Mantle Cell Lymphoma

Marco Ruella, Saad S. Kenderian, Olga Shestova, Joseph A. Fraietta, Sohail Qayyum, Qian Zhang, Marcela V. Maus, Xiaobin Liu, Selene Nunez-Cruz, Michael Klichinsky, Omkar U. Kawalekar, Michael Milone, Simon F. Lacey, Anthony Mato, Stephen J. Schuster, Michael Kalos, Carl H. June, Saar Gill, and Mariusz A. Wasik

2697 Combined Antitumor Therapy with Metronomic Topotecan and Hypoxia-Activated Prodrug, Evofosfamide, in Neuroblastoma and Rhabdomyosarcoma Preclinical Models

Libo Zhang, Paula Marrano, Bing Wu, Sushil Kumar, Paul Thoner, and Sylvain Baruchel

2709 Divergence of Antiangiogenic Activity and Hepatotoxicity of Different Stereoisomers of Itraconazole

Joong Sup Shim, Ruo-Jing Li, Namandje N. Bumpus, Sarah A. Head, Kalyan Kumar Pasunooti, Eun Ju Yang, Junfang Lv, Wei Shi, and Jun O. Liu

2721 The MCT4 Gene: A Novel, Potential Target for Therapy of Advanced Prostate Cancer



Stephen Yiu Chuen Choi, Hui Xue, Rebecca Wu, Ladan Fazli, Dong Lin, Colin C. Collins, Martin E. Gleave, Peter W. Gout, and Yuzhuo Wang

2734 Eradication of Large Solid Tumors by Gene Therapy with a T-Cell Receptor Targeting a Single Cancer-Specific Point Mutation

Matthias Leisegang, Boris Engels, Karin Schreiber, Poh Yin Yew, Kazuma Kiyotani, Christian Idel, Ainhua Arina, Jaikummar Duraiswamy, Ralph R. Weichselbaum, Wolfgang Ueckert, Yusuke Nakamura, and Hans Schreiber
See related commentary, p. 2602

2744 Cotargeting Androgen Receptor Splice Variants and mTOR Signaling Pathway for the Treatment of Castration-Resistant Prostate Cancer



Minoru Kato, Carmen A. Banuelos, Yusuke Imamura, Jacky K. Leung, Daniel P. Caley, Jun Wang, Nasrin R. Mawji, and Marianne D. Sadar

BIOLOGY OF HUMAN TUMORS

2755 MYD88 L265P Mutations, But No Other Variants, Identify a Subpopulation of DLBCL Patients of Activated B-cell Origin, Extranodal Involvement, and Poor Outcome

Jordina Rovira, Kennosuke Karube, Alexandra Valera, Dolores Colomer, Anna Enjuanes, Lluís Colomo, Alejandra Martínez-Trillos, Eva Giné, Ivan Dlouhy, Laura Magnano, Julio Delgado, Antonio Martínez, Neus Villamor, Elías Campo, and Armando López-Guillermo

2765 Adaptation to AI Therapy in Breast Cancer Can Induce Dynamic Alterations in ER Activity Resulting in Estrogen-Independent Metastatic Tumors

Damir Varešlija, Jean McBryan, Ailís Fagan, Aisling M. Redmond, Yuan Hao, Andrew H. Sims, Arran Turnbull, J.M. Dixon, Peadar Ó Gaora, Lance Hudson, Siobhan Purcell, Arnold D.K. Hill, and Leonie S. Young

2778 B7-H4(B7x)-Mediated Cross-talk between Glioma-Initiating Cells and Macrophages via the IL6/JAK/STAT3 Pathway Lead to Poor Prognosis in Glioma Patients

Yu Yao, Hongxing Ye, Zengxin Qi, Lianjie Mo, Qi Yue, Aparajita Baral, Dave S.B. Hoon, Juan Carlos Vera, John D. Heiss, Clark C. Chen, Wei Hua, Jianmin Zhang, Kunlin Jin, Yin Wang, Xingxing Zang, Ying Mao, and Liangfu Zhou

2791 Role of NADH Dehydrogenase (Ubiquinone) 1 Alpha Subcomplex 4-Like 2 in Clear Cell Renal Cell Carcinoma

Denise R. Minton, Leiping Fu, Nigel P. Mongan, Maria M. Shevchuk, David M. Nanus, and Lorraine J. Gudas

2802 The Combination of DNA Ploidy Status and PTEN/6q15 Deletions Provides Strong and Independent Prognostic Information in Prostate Cancer

Maximilian Lennartz, Sarah Minner, Sophie Brasch, Hilko Wittmann, Leonard Paterna, Katja Angermeier, Eray Öztürk, Rami Shihada, Mingu Ruge, Martina Kluth, Christina Koop, Waldemar Wilczak, Till Krech, Patrick Lebok, Corinna Wittmer, Hans Heinzer, Thomas Steuber, Meike Adam, Hartwig Huland, Markus Graefen, Alexander Haese, Ronald Simon, Guido Sauter, and Thorsten Schlömm

Table of Contents

- 2812** MACC1 Induces Tumor Progression in Transgenic Mice and Colorectal Cancer Patients via Increased Pluripotency Markers Nanog and Oct4
Clara Lemos, Markus S. Hardt, Manisha Juneja, Cynthia Voss, Susann Förster, Boris Jerchow, Wolfram Haider, Hendrik Bläker, and Ulrike Stein

CORRECTION

- 2825** Correction: Hydroxychloroquine Inhibits Autophagy to Potentiate Antiestrogen Responsiveness in ER⁺ Breast Cancer

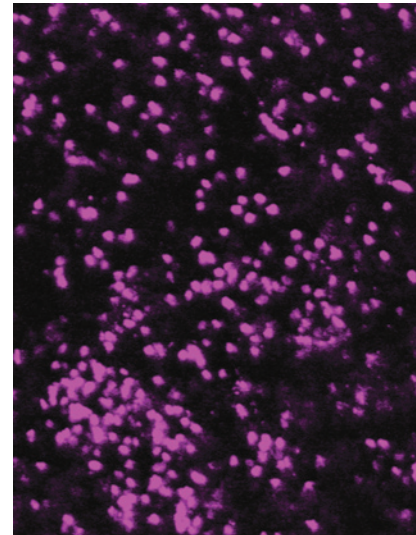
 AC icon indicates Author Choice

 CME icon indicates that this article is available for continuing medical education credit at <http://cme.aacrjournals.org>

For more information please visit www.aacrjournals.org

ABOUT THE COVER

The cover shows a section of a solid tumor in a mouse following mutation-specific TCR gene therapy. Intravital imaging shows the extravasation of erythrocytes, indicating vessel destruction only 1 day after mutation-specific T cells begin to infiltrate the cancer. For details, see the article by Leisegang and colleagues on page 2734 of this issue.



Clinical Cancer Research

22 (11)

Clin Cancer Res 2016;22:2597-2825.

Updated version Access the most recent version of this article at:
<http://clincancerres.aacrjournals.org/content/22/11>

E-mail alerts [Sign up to receive free email-alerts](#) related to this article or journal.

Reprints and Subscriptions To order reprints of this article or to subscribe to the journal, contact the AACR Publications Department at pubs@aacr.org.

Permissions To request permission to re-use all or part of this article, contact the AACR Publications Department at permissions@aacr.org.