

**Highlights of This Issue 785**

**SPECIAL FEATURES**

**CCR Translations**

- 787** Scientific Significance of Clinically Insignificant FcγRIIIa-V158F Polymorphism  
Guillaume Cartron, Roch Houot, and Holbrook E. Kohrt  
*See related article, p. 821*
- 790** Profiling Non–Small Cell Lung Cancer: From Tumor to Blood  
Dana W.Y. Tsui and Michael F. Berger  
*See related article, p. 915*

**CCR New Strategies**

- 793** New Strategies in Bladder Cancer: A Second Coming for Immunotherapy  
Ali Ghasemzadeh, Trinity J. Bivalacqua, Noah M. Hahn, and Charles G. Drake

**Molecular Pathways**


- 802** Molecular Pathways: Targeting Cancer Stem Cells Awakened by Chemotherapy to Abrogate Tumor Repopulation  
Keith Syson Chan

**Reviews**

- 807** Cancer Neoantigens and Applications for Immunotherapy  
Alexis Desrichard, Alexandra Snyder, and Timothy A. Chan
- 813** Microsatellite Instability as a Biomarker for PD-1 Blockade  
 Jonathan C. Dudley, Ming-Tseh Lin, Dung T. Le, and James R. Eshleman

**CANCER THERAPY: CLINICAL**

- 821** Fc Gamma Receptor 3A and 2A Polymorphisms Do Not Predict Response to Rituximab in Follicular Lymphoma  
Vaishalee P. Kenkre, Fangxin Hong, James R. Cerhan, Marcia Lewis, Leslie Sullivan, Michael E. Williams, Randy D. Gascoyne, Sandra J. Horning, and Brad S. Kahl  
*See related commentary, p. 787*

- 827** Safety, Pharmacokinetics, and Pharmacodynamics of a Humanized Anti-Semaphorin 4D Antibody, in a First-In-Human Study of Patients with Advanced Solid Tumors  


Amita Patnaik, Glen J. Weiss, John E. Leonard, Drew Warren Rasco, Jasjit C. Sachdev, Terrence L. Fisher, Laurie A. Winter, Christine Reilly, Robert B. Parker, Danielle Mutz, Lisa Blaydorn, Anthony W. Tolcher, Maurice Zauderer, and Ramesh K. Ramanathan

- 837** Efficacy and Biological Activity of Imatinib in Metastatic Dermatofibrosarcoma Protuberans (DFSP)

Silvia Stacchiotti, Maria A. Pantaleo, Tiziana Negri, Annalisa Astolfi, Marcella Tazzari, Gian Paolo Dagrada, Milena Urbini, Valentina Indio, Roberta Maestro, Alessandro Gronchi, Marco Fiore, Angelo P. Dei Tos, Elena Conca, Elena Palassini, Bruno Vincenzi, Federica Grosso, Silvana Pilotti, Chiara Castelli, and Paolo G. Casali

- 847** Phase I Study of the Investigational NEDD8-Activating Enzyme Inhibitor Pevonedistat (TAK-924/MLN4924) in Patients with Advanced Solid Tumors

John Sarantopoulos, Geoffrey I. Shapiro, Roger B. Cohen, Jeffrey W. Clark, John S. Kauh, Glen J. Weiss, James M. Cleary, Devalingam Mahalingam, Michael D. Pickard, Hélène M. Faessel, Allison J. Berger, Kristine Burke, George Mulligan, Bruce J. Dezube, and R. Donald Harvey

- 858** Exposure and Tumor Fn14 Expression as Determinants of Pharmacodynamics of the Anti-TWEAK Monoclonal Antibody RG7212 in Patients with Fn14-Positive Solid Tumors

Didier Meulendijks, Ulrik N. Lassen, Lillian L. Siu, Alwin D.R. Huitema, Vaios Karanikas, Morten Mau-Sorensen, Derek J. Jonker, Aaron R. Hansen, Mary E. Simcox, Kathleen J. Schostack, Dean Bottino, Hua Zhong, Markus Roessler, Suzana M. Vega-Harring, Tiantom Jarutat, David Geho, Karen Wang, Mark DeMario, Glenwood D. Goss, and Jan H.M. Schellens

- 868** Results of the Phase I Trial of RG7112, a Small-Molecule MDM2 Antagonist in Leukemia

Michael Andreeff, Kevin R. Kelly, Karen Yee, Sarit Assouline, Roger Strair, Leslie Popplewell, David Bowen, Giovanni Martinelli, Mark W. Drummond, Pares Vyas, Mark Kirschbaum, Swaminathan Padmanabhan Iyer, Vivian Ruvolo, Graciela M. Nogueras González, Xuelin Huang, Gong Chen, Bradford Graves, Steven Blotner, Peter Bridge, Lori Jukofsky, Steve Middleton, Monica Reckner, Ruediger Rueger, Jianguo Zhi, Gwen Nichols, and Kensuke Kojima

# Table of Contents

**877** First-in-Human Phase I Study of Lumretuzumab, a Glycoengineered Humanized Anti-HER3 Monoclonal Antibody, in Patients with Metastatic or Advanced HER3-Positive Solid Tumors

Didier Meulendijks, Wolfgang Jacob, Maria Martinez-Garcia, Alvaro Taus, Martijn P. Lolkema, Emile E. Voest, Marlies H.G. Langenberg, Tania Fleitas Kanonnikoff, Andres Cervantes, Maja J. De Jonge, Stefan Sleijfer, Morten Mau Soerensen, Marlene Thomas, Maurizio Ceppi, Georgina Meneses-Lorente, Ian James, Celine Adessi, Francesca Michielin, Keelara Abiraj, Birgit Bossenmaier, Jan H.M. Schellens, Martin Weisser, and Ulrik N. Lassen

**886** Nivolumab in Resected and Unresectable Metastatic Melanoma: Characteristics of Immune-Related Adverse Events and Association with Outcomes

Morganna Freeman-Keller, Youngchul Kim, Heather Cronin, Allison Richards, Geoffrey Gibney, and Jeffrey S. Weber

## PERSONALIZED MEDICINE AND IMAGING

**895** Triple-Negative versus Non-Triple-Negative Breast Cancers in High-Risk Women: Phenotype Features and Survival from the HIBCRIT-1 MRI-Including Screening Study

Franca Podo, Filippo Santoro, Giovanni Di Leo, Siranoush Manoukian, Clelia de Giacomi, Stefano Corcione, Laura Cortesi, Luca A. Carbonaro, Rubina M. Trimboli, Anna Cilotti, Lorenzo Preda, Bernardo Bonanni, Matilde Pensabene, Laura Martincich, Antonella Savarese, Alma Contegiacomo, and Francesco Sardanelli

**905** HAGE in Triple-Negative Breast Cancer Is a Novel Prognostic, Predictive, and Actionable Biomarker: A Transcriptomic and Protein Expression Analysis

Tarek M.A. Abdel-Fatah, Stephanie E.B. McArdle, Devika Agarwal, Paul M. Moseley, Andrew R. Green, Graham R. Ball, A. Graham Pockley, Ian O. Ellis, Robert C. Rees, and Stephen Y.T. Chan

**915** Bias-Corrected Targeted Next-Generation Sequencing for Rapid, Multiplexed Detection of Actionable Alterations in Cell-Free DNA from Advanced Lung Cancer Patients

Cloud P. Paweletz, Adrian G. Sacher, Chris K. Raymond, Ryan S. Alden, Allison O'Connell, Stacy L. Mach, Yanan Kuang, Leena Gandhi, Paul Kirschmeier, Jessie M. English, Lee P. Lim, Pasi A. Jänne, and Geoffrey R. Oxnard

*See related commentary, p. 790*

## CANCER THERAPY: PRECLINICAL

**923** Cabozantinib (XL184) Inhibits Growth and Invasion of Preclinical TNBC Models

Mansoureh Sameni, Elizabeth A. Tovar, Curt J. Essenburg, Anita Chalasani, Erik S. Linklater, Andrew Borgman, David M. Cherba, Arulselvi Anbalagan, Mary E. Winn, Carrie R. Graveel, and Bonnie F. Sloane

**935** MAPK Activation Predicts Poor Outcome and the MEK Inhibitor, Selumetinib, Reverses Antiestrogen Resistance in ER-Positive High-Grade Serous Ovarian Cancer

Karina E. Hew, Philip C. Miller, Dorraya El-Ashry, Jun Sun, Alexandra H. Besser, Tan A. Ince, Mengnan Gu, Zhi Wei, Gao Zhang, Patricia Brafford, Wei Gao, Yiling Lu, Gordon B. Mills, Joyce M. Slingerland, and Fiona Simpkins

**948** Crizotinib Synergizes with Chemotherapy in Preclinical Models of Neuroblastoma

Kateryna Krytska, Hannah T. Ryles, Renata Sano, Pichai Raman, Nicole R. Infarinato, Theodore D. Hansel, Monish R. Makena, Michael M. Song, C. Patrick Reynolds, and Yael P. Mossé

**961** Multimodal Image-Guided Surgical and Photodynamic Interventions in Head and Neck Cancer: From Primary Tumor to Metastatic Drainage

Nidal Muhanna, Liyang Cui, Harley Chan, Laura Burgess, Cheng S. Jin, Thomas D. MacDonald, Elizabeth Huynh, Fan Wang, Juan Chen, Jonathan C. Irish, and Gang Zheng

## BIOLOGY OF HUMAN TUMORS

**971** Chemotherapy Resistance in Diffuse-Type Gastric Adenocarcinoma Is Mediated by RhoA Activation in Cancer Stem-Like Cells

Changhwan Yoon, Soo-Jeong Cho, Bülent Arman Aksoy, Do Joong Park, Nikolaus Schultz, Sandra W. Ryeom, and Sam S. Yoon

**984** Global Hypomethylation (LINE-1) and Gene-Specific Hypermethylation (GSTP1) on Initial Negative Prostate Biopsy as Markers of Prostate Cancer on a Rebiopsy

Renata Zelic, Valentina Fiano, Daniela Zugna, Chiara Grasso, Luisa Delsedime, Lorenzo Daniele, Diego Galliano, Andreas Pettersson, Anna Gillio-Tos, Franco Merletti, and Lorenzo Richiardi

# Table of Contents

**993** *ESR1* Mutations in Circulating Plasma Tumor DNA from Metastatic Breast Cancer Patients

David Chu, Costanza Paoletti, Christina Gersch, Dustin A. VanDenBerg, Daniel J. Zabransky, Rory L. Cochran, Hong Yuen Wong, Patricia Valda Toro, Justin Cidado, Sarah Croessmann, Bracha Erlanger, Karen Cravero, Kelly Kyker-Snowman, Berry Button, Heather A. Parsons, W. Brian Dalton, Riaz Gillani, Arielle Medford, Kimberly Aung, Nahomi Tokudome, Arul M. Chinnaiyan, Anne Schott, Dan Robinson, Karen S. Jacks, Josh Lauring, Paula J. Hurley, Daniel F. Hayes, James M. Rae, and Ben Ho Park

**1000** Effect of a Smac Mimetic (TL32711, Birinapant) on the Apoptotic Program and Apoptosis Biomarkers Examined with Validated Multiplex Immunoassays Fit for Clinical Use

Apurva K. Srivastava, Soumya Jaganathan, Laurie Stephen, Melinda G. Hollingshead, Adam Layhee, Eric Damour, Jeevan Prasaad Govindharajulu, Jennifer Donohue, Dominic Esposito, James P. Mapes, Robert J. Kinders, Naoko Takebe, Joseph E. Tomaszewski, Shivaani Kummar, James H. Doroshov, and Ralph E. Parchment

**1011** Well-Differentiated Neuroendocrine Tumors with a Morphologically Apparent High-Grade Component: A Pathway Distinct from Poorly

 Differentiated Neuroendocrine Carcinomas

Laura H. Tang, Brian R. Untch, Diane L. Reidy, Eileen O'Reilly, Deepti Dhall, Lily Jih, Olca Basturk, Peter J. Allen, and David S. Klimstra

**1018** Analysis of *mTOR* Gene Aberrations in Melanoma Patients and Evaluation of Their Sensitivity to

 PI3K-AKT-mTOR Pathway Inhibitors

Yan Kong, Lu Si, Yiqian Li, Xiaowen Wu, Xiaowei Xu, Jie Dai, Huan Tang, Meng Ma, Zhihong Chi, Xinan Sheng, Chuanliang Cui, and Jun Guo

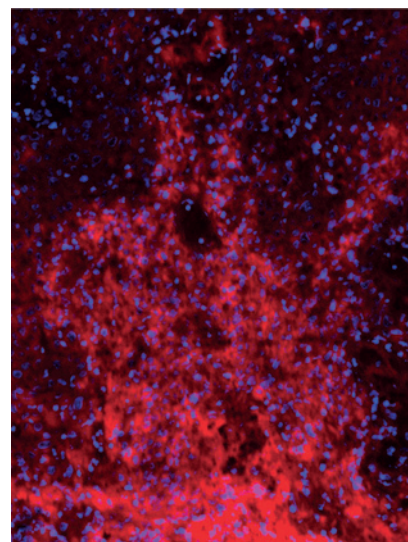
 AC icon indicates Author Choice

 CME icon indicates that this article is available for continuing medical education credit at <http://cme.aacrjournals.org>

For more information please visit [www.aacrjournals.org](http://www.aacrjournals.org)

## ABOUT THE COVER

At 24 hours after intravenous injection, PLP nanoparticles enabled fluorescence imaging of a tumor with considerable specificity and accuracy at the cellular level. For details, see the article by Muhanna and colleagues on page 961 of this issue.



# Clinical Cancer Research

**22 (4)**

*Clin Cancer Res* 2016;22:785-1027.

**Updated version** Access the most recent version of this article at:  
<http://clincancerres.aacrjournals.org/content/22/4>

**E-mail alerts** [Sign up to receive free email-alerts](#) related to this article or journal.

**Reprints and Subscriptions** To order reprints of this article or to subscribe to the journal, contact the AACR Publications Department at [pubs@aacr.org](mailto:pubs@aacr.org).

**Permissions** To request permission to re-use all or part of this article, use this link <http://clincancerres.aacrjournals.org/content/22/4>. Click on "Request Permissions" which will take you to the Copyright Clearance Center's (CCC) Rightslink site.