

Highlights of This Issue 1363

SPECIAL FEATURES

CCR Translations

- 1365** Predicting MEK Inhibitor Response in Lung Cancer: A Proper Signature Is Required
Yaohua Xue and Piro Lito
See related article, p. 1471

CCR Perspectives in Regulatory Science and Policy

- 1368** An FDA Perspective on the Regulatory Implications of Complex Signatures to Predict Response to Targeted Therapies
Julia A. Beaver, Abraham Tzou, Gideon M. Blumenthal, Amy E. McKee, Geoffrey Kim, Richard Pazdur, and Reena Philip

Molecular Pathways

- 1373** Molecular Pathways: Mucins and Drug Delivery in Cancer
Chinthalapally V. Rao, Naveena B. Janakiram, and Altaf Mohammed

Review

- 1379** Therapeutic Small Molecules Target Inhibitor of Apoptosis Proteins in Cancers with Deregulation of Extrinsic and Intrinsic Cell Death Pathways
Adeeb Derakhshan, Zhong Chen, and Carter Van Waes

CANCER THERAPY: CLINICAL

- 1388** Ipilimumab with Stereotactic Ablative Radiation Therapy: Phase I Results and Immunologic Correlates from Peripheral T Cells
Chad Tang, James W. Welsh, Patricia de Groot, Erminia Massarelli, Joe Y. Chang, Kenneth R. Hess, Sreyashi Basu, Michael A. Curran, Maria E. Cabanillas, Vivek Subbiah, Siqing Fu, Apostolia M. Tsimberidou, Daniel Karp, Daniel R. Gomez, Adi Diab, Ritsuko Komaki, John V. Heymach, Padmanee Sharma, Aung Naing, and David S. Hong

- 1397** Sequence-Specific Pharmacokinetic and Pharmacodynamic Phase I/Ib Study of Olaparib Tablets and Carboplatin in Women's Cancer
Jung-Min Lee, Cody J. Peer, Minshu Yu, Lauren Amable, Nicolas Gordon, Christina M. Annunziata, Nicole Houston, Andrew K.L. Goey, Tristan M. Sissung, Bernard Parker, Lori Minasian, Victoria L. Chiou, Robert F. Murphy, Brigitte C. Widemann, William D. Figg, and Elise C. Kohn

- 1407** Modifying the Clinical Research Infrastructure at a Dedicated Clinical Trials Unit: Assessment of Trial Development, Activation, and Participant Accrual
Chad Tang, Kenneth R. Hess, Dwana Sanders, Suzanne E. Davis, Aman U. Buzdar, Razelle Kurzrock, J. Jack Lee, Funda Meric-Bernstam, and David S. Hong

- 1414** Clinical Trial Characteristics and Barriers to Participant Accrual: The MD Anderson Cancer Center Experience over 30 years, a Historical Foundation for Trial Improvement
Chad Tang, Steven I. Sherman, Mellanie Price, Jun Weng, Suzanne E. Davis, David S. Hong, James C. Yao, Aman Buzdar, George Wilding, and J. Jack Lee

PERSONALIZED MEDICINE AND IMAGING

- 1422** Serum Metabolomic Profiles Identify ER-Positive Early Breast Cancer Patients at Increased Risk of Disease Recurrence in a Multicenter Population
Christopher D. Hart, Alessia Vignoli, Leonardo Tenori, Gemma Leonora Uy, Ta Van To, Clement Adebamowo, Syed Mozammel Hossain, Laura Biganzoli, Emanuela Risi, Richard R. Love, Claudio Luchinat, and Angelo Di Leo

- 1432** ¹⁸F-fluoromisonidazole PET and Activity of Neoadjuvant Nintedanib in Early HER2-Negative Breast Cancer: A Window-of-Opportunity Randomized Trial



Miguel Quintela-Fandino, Ana Lluch, Luis Manso, Isabel Calvo, Javier Cortes, José Angel García-Saenz, Miguel Gil-Gil, Noelia Martínez-Jáñez, Antonio Gonzalez-Martin, Encarna Adrover, Raquel de Andres, Gemma Viñas, Antonio Llombart-Cussac, Emilio Alba, Juan Guerra, Begoña Bermejo, Esther Zamora, Fernando Moreno-Anton, Sonia Pernas Simon, Alfredo Carrato, Antonio Lopez-Alonso, María José Escudero, Ruth Campo, Eva Carrasco, José Palacios, Francisca Mulero, and Ramon Colomer



Table of Contents

1442 Radiological Image Traits Predictive of Cancer Status in Pulmonary Nodules

Ying Liu, Yoganand Balagurunathan, Thomas Atwater, Sanja Antic, Qian Li, Ronald C. Walker, Gary T. Smith, Pierre P. Massion, Matthew B. Schabath, and Robert J. Gillies


1450 Identification of Keratin 19–Positive Cancer Stem Cells Associating Human Hepatocellular Carcinoma Using ¹⁸F-Fluorodeoxyglucose Positron Emission Tomography

Takayuki Kawai, Kentaro Yasuchika, Satoru Seo, Tatsuya Higashi, Takamichi Ishii, Yuya Miyauchi, Hidenobu Kojima, Ryoya Yamaoka, Hokahiro Katayama, Elena Yukie Yoshitoshi, Satoshi Ogiso, Sadahiko Kita, Katsutaro Yasuda, Ken Fukumitsu, Yuji Nakamoto, Etsuro Hatano, and Shinji Uemoto

1461 Co-clinical Assessment of Tumor Cellularity in Pancreatic Cancer

Irina Heid, Katja Steiger, Marija Trajkovic-Arsic, Marcus Settles, Manuela R. Eßwein, Mert Erkan, Jörg Kleeff, Carsten Jäger, Helmut Friess, Bernhard Haller, Andreas Steingötter, Roland M. Schmid, Markus Schwaiger, Ernst J. Rummeny, Irene Esposito, Jens T. Siveke, and Rickmer F. Braren

1471 Clinically Viable Gene Expression Assays with Potential for Predicting Benefit from MEK

 **Inhibitors**

Roz Brant, Alan Sharpe, Tom Liptrot, Jonathan R. Dry, Elizabeth A. Harrington, J. Carl Barrett, Nicky Whalley, Christopher Womack, Paul Smith, and Darren R. Hodgson
See related commentary, p. 1365

CANCER THERAPY: PRECLINICAL

1481 UNC2025, a MERTK Small-Molecule Inhibitor, Is Therapeutically Effective Alone and in Combination with Methotrexate in Leukemia Models

Deborah DeRyckere, Alisa B. Lee-Sherick, Madeline G. Huey, Amanda A. Hill, Jeffrey W. Tyner, Kristen M. Jacobsen, Lauren S. Page, Gregory G. Kirkpatrick, Fatma Eryildiz, Stephanie A. Montgomery, Weihe Zhang, Xiaodong Wang, Stephen V. Frye, H. Shelton Earp, and Douglas K. Graham

1493 The Human CD38 Monoclonal Antibody Daratumumab Shows Antitumor Activity and Hampers Leukemia–Microenvironment Interactions in Chronic Lymphocytic Leukemia

Alba Matas-Céspedes, Anna Vidal-Crespo, Vanina Rodriguez, Neus Villamor, Julio Delgado, Eva Giné, Heleia Roca-Ho, Pablo Menéndez, Elías Campo, Armando López-Guillermo, Dolores Colomer, Gaël Roué, Adrian Wiestner, Paul W.H.I. Paren, Parul Doshi, Jeroen Lammerts van Bueren, and Patricia Pérez-Galán

1506 MGD011, A CD19 x CD3 Dual-Affinity Retargeting Bi-specific Molecule Incorporating Extended Circulating Half-life for the Treatment of B-Cell Malignancies



Liqin Liu, Chia-Ying K. Lam, Vatana Long, Lusiana Widjaja, Yinhua Yang, Hua Li, Linda Jin, Steve Burke, Sergey Gorlatov, Jennifer Brown, Ralph Alderson, Margaret D. Lewis, Jeffrey L. Nordstrom, Scott Koenig, Paul A. Moore, Syd Johnson, and Ezio Bonvini

1519 Safe and Effective Treatment of Experimental Neuroblastoma and Glioblastoma Using Systemically Delivered Triple MicroRNA–Detargeted Oncolytic Semliki Forest Virus



Mohanraj Ramachandran, Di Yu, Matheus Dyczynski, Sathishkumar Baskaran, Lei Zhang, Aleksei Lulla, Valeria Lulla, Sirle Saul, Sven Nelander, Anna Dimberg, Andres Merits, Justyna Leja-Jarblad, and Magnus Essand

1531 AZ1366: An Inhibitor of Tankyrase and the Canonical Wnt Pathway that Limits the Persistence of Non–Small Cell Lung Cancer Cells Following EGFR Inhibition

Hannah A. Scarborough, Barbara A. Helfrich, Matias Casás-Selves, Alwin G. Schuller, Shaun E. Grosskurth, Jihye Kim, Aik-Choon Tan, Daniel C. Chan, Zhiyong Zhang, Vadym Zaberezhnyy, Paul A. Bunn, and James DeGregori

1542 BIRC6 Targeting as Potential Therapy for Advanced, Enzalutamide-Resistant Prostate Cancer

Iris Sze Ue Luk, Raunak Shrestha, Hui Xue, Yuwei Wang, Fang Zhang, Dong Lin, Anne Haegert, Rebecca Wu, Xin Dong, Colin C. Collins, Amina Zoubeydi, Martin E. Gleave, Peter W. Gout, and Yuzhuo Wang

1552 Inhibition of the Nuclear Export Receptor XPO1 as a Therapeutic Target for Platinum-Resistant Ovarian Cancer



Ying Chen, Sandra Catalina Camacho, Thomas R. Silvers, Albiruni R.A. Razak, Nashat Y. Gabrail, John F. Gerecitano, Eva Kalir, Elena Pereira, Brad R. Evans, Susan J. Ramus, Fei Huang, Nolan Priedigkeit, Estefania Rodriguez, Michael Donovan, Faisal Khan, Tamara Kalir, Robert Sebra, Andrew Uzilov, Rong Chen, Rileen Sinha, Richard Halpert, Jean-Noel Billaud, Sharon Shcham, Dilara McCauley, Yosef Landesman, Tami Rashal, Michael Kauffman, Mansoor R. Mirza, Morten Mau-Sørensen, Peter Dottino, and John A. Martignetti

1564 Efficacy of Anti-mesothelin Immunotoxin RG7787 plus Nab-Paclitaxel against Mesothelioma Patient–Derived Xenografts and Mesothelin as a Biomarker of Tumor Response

Jingli Zhang, Swati Khanna, Qun Jiang, Christine Alewine, Markku Miettinen, Ira Pastan, and Raffit Hassan

Table of Contents

BIOLOGY OF HUMAN TUMORS

1575 Interleukin-17–Producing Neutrophils Link Inflammatory Stimuli to Disease Progression by Promoting Angiogenesis in Gastric Cancer



Tuan-Jie Li, Yu-Ming Jiang, Yan-Feng Hu, Lei Huang, Jiang Yu, Li-Ying Zhao, Hai-Jun Deng, Ting-Yu Mou, Hao Liu, Yang Yang, Qi Zhang, and Guo-Xin Li

1586 Characterization of Biomarkers of Tumorigenic and Chemoresistant Cancer Stem Cells in Human Gastric Carcinoma

Phu Hung Nguyen, Julie Giraud, Lucie Chambonnier, Pierre Dubus, Linda Wittkop, Geneviève Belleannée, Denis Collet, Isabelle Soubeyran, Serge Evrard, Benoit Rousseau, Nathalie Senant-Dugot, Francis Mégraud, Frédéric Mazurier, and Christine Varon

1598 Alternative Lengthening of Telomeres in Primary Pancreatic Neuroendocrine Tumors Is Associated with Aggressive Clinical Behavior and Poor Survival

Joo Young Kim, Jacqueline A. Brosnan-Cashman, Soyeon An, Sung Joo Kim, Ki-Byung Song, Min-Sun Kim, Mi-Ju Kim, Dae Wook Hwang, Alan K. Meeker, Eunsil Yu, Song Cheol Kim, Ralph H. Hruban, Christopher M. Heaphy, and Seung-Mo Hong

1607 Mutant p53 Together with TGF β Signaling Influence Organ-Specific Hematogenous Colonization Patterns of Pancreatic Cancer



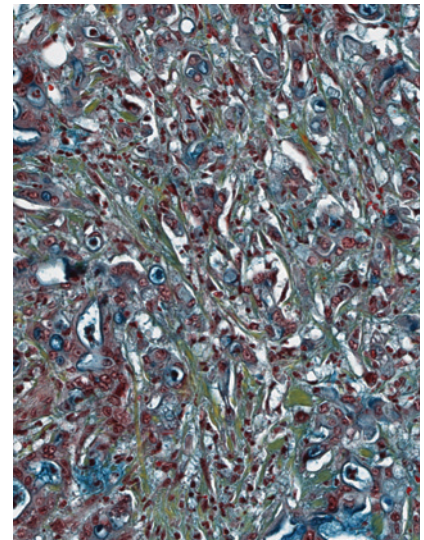
Yi Zhong, Anne Macgregor-Das, Tyler Saunders, Martin C. Whittle, Alvin Makohon-Moore, Zachary A. Kohutek, Justin Poling, Brian T. Herbst, Breanna M. Javier, Leslie Cope, Steven D. Leach, Sunil R. Hingorani, and Christine A. Iacobuzio-Donahue

AC icon indicates Author Choice

For more information please visit www.aacrjournals.org

ABOUT THE COVER

The cover shows an area of a human pancreatic ductal adenocarcinoma with moderate tumor cellularity stained with Movat's pentachrome staining visualizing tumor cells (red), intratumoral collagen fibres (yellow) and mucin/ground substance (blue). For details, see the article by Heid and colleagues on page 1461 of this issue.



Clinical Cancer Research

23 (6)

Clin Cancer Res 2017;23:1363-1620.

Updated version Access the most recent version of this article at:
<http://clincancerres.aacrjournals.org/content/23/6>

E-mail alerts [Sign up to receive free email-alerts](#) related to this article or journal.

Reprints and Subscriptions To order reprints of this article or to subscribe to the journal, contact the AACR Publications Department at pubs@aacr.org.

Permissions To request permission to re-use all or part of this article, use this link <http://clincancerres.aacrjournals.org/content/23/6>.
Click on "Request Permissions" which will take you to the Copyright Clearance Center's (CCC) Rightslink site.