

## SPECIAL FEATURES

## Highlights of This Issue 2941

## CCR Translations

**2943** Tumor Landscapes:  $\beta$ -Catenin Drives Immune Desertification

Denarda Dangaj, David Barras, and George Coukos  
*See related article, p. 3074*

**2946** Mechanism of Action of a New Anti-CD38 Antibody: Enhancing Myeloma Immunotherapy

Fabio Malavasi and Angelo Corso Faini  
*See related article, p. 3176*

## CCR Drug Updates

**2949** FDA Approval Summary: Pertuzumab for Adjuvant Treatment of HER2-Positive Early Breast Cancer

Lynn J. Howie, Nancy S. Scher, Laleh Amiri-Kordestani, Lijun Zhang, Bellinda L. King-Kallimanis, Yasmin Choudhry, Jason Schroeder, Kirsten B. Goldberg, Paul G. Kluetz, Amna Ibrahim, Rajeshwari Sridhara, Gideon M. Blumenthal, Richard Pazdur, and Julia A. Beaver

## Review

**2956** Unfolding the Role of Calreticulin in Myeloproliferative Neoplasm Pathogenesis

Tiffany R. Merlinsky, Ross L. Levine, and Elodie Pronier

## Perspectives

**2963** Alternative RNA Splicing as a Potential Major Source of Untapped Molecular Targets in Precision Oncology and Cancer Disparities

Timothy J. Robinson, Jennifer A. Freedman, Muthana Al Abo, April E. Deveaux, Bonnie LaCroix, Brendon M. Patierno, Daniel J. George, and Steven R. Patierno

## Special Report

**2969** Targeting the Tumor Microenvironment in Radiation Oncology: Proceedings from the 2018 ASTRO–AACR Research Workshop

Heather M. McGee, Dadi Jiang, David R. Soto-Pantoja, Avinoam Nevler, Amato J. Giaccia, and Wendy A. Woodward

## CLINICAL TRIALS: TARGETED THERAPY

**2975** A Phase II Randomized Study of Neoadjuvant Letrozole Plus Alpelisib for Hormone Receptor-Positive, Human Epidermal Growth Factor Receptor 2-Negative Breast Cancer (NEO-ORB)

Ingrid A. Mayer, Aleix Prat, Daniel Egle, Sibel Blau, J. Alejandro Pérez Fidalgo, Michael Gnant, Peter A. Fasching, Marco Colleoni, Antonio C. Wolff, Eric P. Winer, Christian F. Singer, Sara Hurvitz, Laura García Estévez, Peter A. van Dam, Sherko Kümmel, Christoph Mundhenke, Frankie Holmes, Naveen Babbar, Laure Charbonnier, Ivan Diaz-Padilla, Florian D. Vogl, Dalila Sellami, and Carlos L. Arteaga

**2988** MAVERICC, a Randomized, Biomarker-stratified, Phase II Study of mFOLFOX6-Bevacizumab versus FOLFIRI-Bevacizumab as First-line Chemotherapy in Metastatic Colorectal Cancer

Aparna R. Parikh, Fa-Chyi Lee, Linda Yau, Han Koh, James Knost, Edith P. Mitchell, Ivan Bosanac, Nicholas Choong, Frank Scappaticci, Christoph Mancao, and Heinz-Josef Lenz

## PRECISION MEDICINE AND IMAGING

**2996** Single-Cell Profiling of Cutaneous T-Cell Lymphoma Reveals Underlying Heterogeneity Associated with Disease Progression

Nicholas Borchering, Andrew P. Voigt, Vincent Liu, Brian K. Link, Weizhou Zhang, and Ali Jabbari

**3006** Application of Artificial Intelligence for Preoperative Diagnostic and Prognostic Prediction in Epithelial Ovarian Cancer Based on Blood Biomarkers

Eiryo Kawakami, Junya Tabata, Nozomu Yanaihara, Tetsuo Ishikawa, Keita Koseki, Yasushi Iida, Misato Saito, Hiromi Komazaki, Jason S. Shapiro, Chihiro Goto, Yuka Akiyama, Ryosuke Saito, Motoaki Saito, Hirokuni Takano, Kyosuke Yamada, and Aikou Okamoto

# Table of Contents

- 3016** Large-scale Circulating microRNA Profiling for the Liquid Biopsy of Prostate Cancer  
Fumihiko Urabe, Juntaro Matsuzaki, Yusuke Yamamoto, Takahiro Kimura, Tomohiko Hara, Makiko Ichikawa, Satoko Takizawa, Yoshiaki Aoki, Shumpei Niida, Hiromi Sakamoto, Ken Kato, Shin Egawa, Hiroyuki Fujimoto, and Takahiro Ochiya
- 3026** A Variant of a Killer Cell Immunoglobulin-like Receptor Is Associated with Resistance to PD-1 Blockade in Lung Cancer  
Marcel P. Trefny, Sacha I. Rothschild, Franziska Uhlenbrock, Dietmar Rieder, Benjamin Kasenda, Michal A. Stanczak, Fiamma Berner, Abhishek S. Kashyap, Monika Kaiser, Petra Herzig, Severin Poechtrager, Daniela S. Thommen, Florian Geier, Spasenija Savic, Philip Jermann, Ilaria Alborelli, Stefan Schaub, Frank Stenner, Martin Früh, Zlatko Trajanoski, Lukas Flatz, Kirsten D. Mertz, Alfred Zippelius, and Heinz Läubli
- 3035** Evaluation of Salivary Exosomal Chimeric *GOLM1-NAA35* RNA as a Potential Biomarker in Esophageal Carcinoma  
Yusheng Lin, Hongmei Dong, Weilun Deng, Wan Lin, Kai Li, Xiao Xiong, Yi Guo, Fuyou Zhou, Changchun Ma, Yuping Chen, Hongzheng Ren, Haijun Yang, Ningtao Dai, Lang Ma, Stephen J. Meltzer, Sai-Ching J. Yeung, and Hao Zhang
- 3046** Plasma HER2 (*ERBB2*) Copy Number Predicts Response to HER2-targeted Therapy in Metastatic Colorectal Cancer  
Giulia Siravegna, Andrea Sartore-Bianchi, Rebecca J. Nagy, Kanwal Raghav, Justin I. Odegaard, Richard B. Lanman, Livio Trusolino, Silvia Marsoni, Salvatore Siena, and Alberto Bardelli
- 3054** Multiplexed (18-Plex) Measurement of Signaling Targets and Cytotoxic T Cells in Trastuzumab-Treated Patients using Imaging Mass Cytometry  
Daniel E. Carvajal-Hausdorf, Jonathan Patsenker, Kelly P. Stanton, Franz Villarroel-Espindola, Amanda Esch, Ruth R. Montgomery, Amanda Psyrrli, Konstantine T. Kalogeras, Vassiliki Kotoula, George Foutzilas, Kurt A. Schalper, Yuval Kluger, and David L. Rimm
- 3063** Cell-Proliferation Imaging for Monitoring Response to CDK4/6 Inhibition Combined with Endocrine-Therapy in Breast Cancer: Comparison of [<sup>18</sup>F]FLT and [<sup>18</sup>F]ISO-1 PET/CT  
Azadeh Elmi, Mehran Makvandi, Chi-Chang Weng, Catherine Hou, Amy S. Clark, Robert H. Mach, and David A. Mankoff

## TRANSLATIONAL CANCER MECHANISMS AND THERAPY

- 3074** WNT/ $\beta$ -catenin Pathway Activation Correlates with Immune Exclusion across Human Cancers  
Jason J. Luke, Riyue Bao, Randy F. Sweis, Stefani Spranger, and Thomas F. Gajewski  
*See related commentary, p. 2943*
- 3084** Evaluation of Pharmacodynamic Responses to Cancer Therapeutic Agents Using DNA Damage Markers  
Deborah F. Wilsker, Allison M. Barrett, Angie B. Dull, Scott M. Lawrence, Melinda G. Hollingshead, Alice Chen, Shivaani Kummur, Ralph E. Parchment, James H. Doroshow, and Robert J. Kinders
- 3096** Molecular Profiling of Appendiceal Adenocarcinoma and Comparison with Right-sided and Left-sided Colorectal Cancer  
Ryuma Tokunaga, Joanne Xiu, Curtis Johnston, Richard M. Goldberg, Philip A. Philip, Andreas Seeber, Madiha Naseem, Jae Ho Lo, Hiroyuki Arai, Francesca Battaglin, Alberto Puccini, Martin D. Berger, Shivani Soni, Wu Zhang, Jimmy J. Hwang, Anthony F. Shields, John L. Marshall, Hideo Baba, W. Michael Korn, and Heinz-Josef Lenz
- 3104** Clonotypic Diversity of the T-cell Receptor Corroborates the Immature Precursor Origin of Cutaneous T-cell Lymphoma  
Abdelbasset Hamrouni, Hanne Fogh, Zoulika Zak, Niels Ødum, and Robert Gniadecki
- 3115** Ultrasensitive Immunoprofiling of Plasma Extracellular Vesicles Identifies Syndecan-1 as a Potential Tool for Minimally Invasive Diagnosis of Glioma  
Vineesh Indira Chandran, Charlotte Welinder, Ann-Sofie Månsson, Svenja Offer, Eva Freyhult, Maria Pernemalm, Sigrid M. Lund, Shona Pedersen, Janne Lehtiö, Gyorgy Marko-Varga, Maria C. Johansson, Elisabet Englund, Pia C. Sundgren, and Mattias Belting
- 3128** C8orf76 Promotes Gastric Tumorigenicity and Metastasis by Directly Inducing lncRNA DUSP5P1 and Associates with Patient Outcomes  
Xiaohong Wang, Qiaoyi Liang, Lianhai Zhang, Hongyan Gou, Ziyu Li, Huarong Chen, Yujuan Dong, Jiafu Ji, and Jun Yu
- 3141** Comprehensive Genetic Characterization of Human Thyroid Cancer Cell Lines: A Validated Panel for Preclinical Studies  
Iñigo Landa, Nikita Pozdveyev, Christopher Korch, Laura A. Marlow, Robert C. Smallridge, John A. Copland, Ying C. Henderson, Stephen Y. Lai, Gary L. Clayman, Naoyoshi Onoda, Aik Choon Tan, Maria E.R. Garcia-Rendueles, Jeffrey A. Knauf, Bryan R. Haugen, James A. Fagin, and Rebecca E. Schweppe

# Table of Contents

## 3152 The CD98 Heavy Chain Is a Marker and Regulator of Head and Neck Squamous Cell Carcinoma Radiosensitivity

David Digomann, Ina Kurth, Anna Tyutyunnykova, Oleg Chen, Steffen Löck, Ielizaveta Gorodetska, Claudia Peitzsch, Ira-Ida Skvortsova, Giulia Negro, Bertram Aschenbrenner, Graeme Eisenhofer, Susan Richter, Stephan Heiden, Joseph Porrmann, Barbara Klink, Christian Schwager, Adam A. Dowle, Linda Hein, Leoni A. Kunz-Schughart, Amir Abdollahi, Fabian Lohaus, Mechthild Krause, Michael Baumann, Annett Linge, and Anna Dubrovska

## 3164 Capmatinib (INC280) Is Active Against Models of Non-Small Cell Lung Cancer and Other Cancer Types with Defined Mechanisms of MET Activation



Sabrina Baltschukat, Barbara Schacher Engstler, Alan Huang, Huai-Xiang Hao, Angela Tam, Hui Qin Wang, Jinsheng Liang, Matthew T. DiMare, Hyo-Eun Carrie Bhang, Youzhen Wang, Pascal Furet, William R. Sellers, Francesco Hofmann, Joseph Schoepfer, and Ralph Tiedt

## 3176 The Mechanism of Action of the Anti-CD38 Monoclonal Antibody Isatuximab in Multiple Myeloma

Laura Moreno, Cristina Perez, Aintzane Zabaleta, Irene Manrique, Diego Alignani, Daniel Ajona, Laura Blanco, Marta Lasa, Patricia Maiso, Idoia Rodriguez, Sonia Garate, Tomas Jelinek, Victor Segura, Cristina Moreno, Juana Merino, Paula Rodriguez-Otero, Carlos Panizo, Felipe Prosper, Jesus F. San-Miguel, and Bruno Paiva

See related commentary, p. 2946

## LETTERS TO THE EDITOR

### 3188 BRAF Mutation Class and Clinical Outcomes—Letter

Matthew Dankner and April A.N. Rose

### 3189 BRAF Mutation Class and Clinical Outcomes—Response

Ibiayi Dagogo-Jack, Mark M. Awad, and Alice T. Shaw

### 3190 The Role of Early-Phase Design—Letter

Mark J. Ratain

### 3191 The Role of Early-Phase Design—Response

Mark R. Conaway and Gina R. Petroni

## 3192 Pembrolizumab Exposure-Response Assessments Challenged by Association of Cancer Cachexia and Catabolic Clearance—Letter

Sander Bins, Stijn L.W. Koolen, and Ron H.J. Mathijssen

## CORRECTIONS

### 3193 Correction: Efficacy and Safety of the Biosimilar ABP 215 Compared with Bevacizumab in Patients with Advanced Nonsquamous Non-small Cell Lung Cancer (MAPLE): A Randomized, Double-blind, Phase III Study

Nicholas Thatcher, Jerome H. Goldschmidt, Michael Thomas, Michael Schenker, Zhiying Pan, Luis Paz-Ares Rodriguez, Valery Breder, Gyula Ostoros, and Vladimir Hanes

### 3194 Correction: Focal Adhesion Kinase Targeting Using *In vivo* Short Interfering RNA Delivery in Neutral Liposomes for Ovarian Carcinoma Therapy

Jyotsnabaran Halder, Aparna A. Kamat, Charles N. Landen Jr, Liz Y. Han, Susan K. Lutgendorf, Yvonne G. Lin, William M. Merritt, Nicholas B. Jennings, Arturo Chavez-Reyes, Robert L. Coleman, David M. Gershenson, Rosemarie Schmandt, Steven W. Cole, Gabriel Lopez-Berestein, and Anil K. Sood

## EDITOR'S NOTES

### 3195 Editor's Note: Genomic and Molecular Characterization of Malignant Peripheral Nerve Sheath Tumor Identifies the IGF1R Pathway as a Primary Target for Treatment

Jilong Yang, Antti Ylipää, Yan Sun, Hong Zheng, Kexin Chen, Matti Nykter, Jonathan Trent, Nancy Ratner, Dina C. Lev, and Wei Zhang

### 3196 Editor's Note: Inhibition of Platelet-derived Growth Factor-mediated Proliferation of Osteosarcoma Cells by the Novel Tyrosine Kinase Inhibitor STI571

Eric C. McGary, Kristy Weber, Lisa Mills, Michelle Doucet, Valerie Lewis, Dina Chelouche Lev, Isaiah J. Fidler, and Menashe Bar-Eli



AC icon indicates AuthorChoice

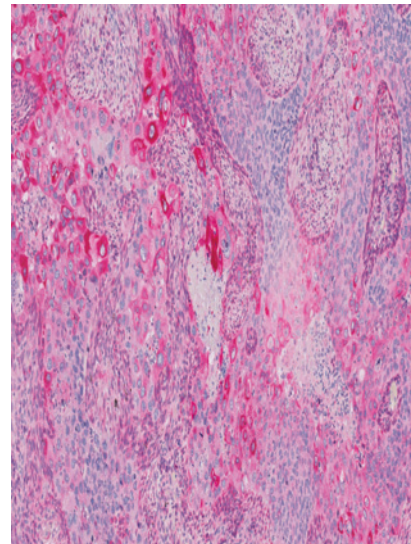
For more information please visit [www.aacrjournals.org](http://www.aacrjournals.org)



# Table of Contents

## ABOUT THE COVER

The cover shows a section of a non-small-cell lung cancer. Immunohistochemical staining demonstrates strong positivity for HLA-F. For details, see the article by Trefny and colleagues on page 3026 of this issue.



# Clinical Cancer Research

**25 (10)**

*Clin Cancer Res* 2019;25:2941-3196.

**Updated version** Access the most recent version of this article at:  
<http://clincancerres.aacrjournals.org/content/25/10>

**E-mail alerts** [Sign up to receive free email-alerts](#) related to this article or journal.

**Reprints and Subscriptions** To order reprints of this article or to subscribe to the journal, contact the AACR Publications Department at [pubs@aacr.org](mailto:pubs@aacr.org).

**Permissions** To request permission to re-use all or part of this article, use this link <http://clincancerres.aacrjournals.org/content/25/10>. Click on "Request Permissions" which will take you to the Copyright Clearance Center's (CCC) Rightslink site.