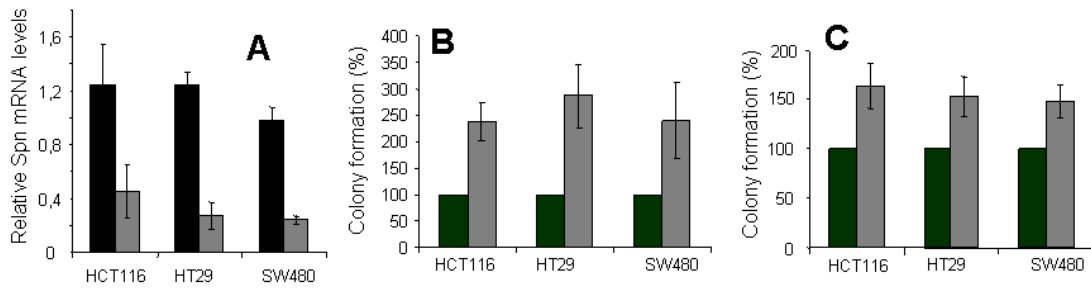


Supplementary Figure 2



Levels of Spn regulate growth properties of CRC tumor cells. Cells used in this study express Spn mRNA. Colon cell lines: HCT116 (p53null were a gently gift from Dr. Vogelstein), HT29, SW480. **A)** ShRNA against Spn reduced the levels of Spn mRNA. CRC tumors cells were infected with retroviruses carrying pRetroSuper vector alone (black) or Spn shRNA (grey) and were selected. Then mRNA was extracted, and Spn mRNA was analyzed by quantitative RT-PCR. Data show the average of three independent determinations. **B)** Loss of Spn increases tumorigenic properties of cells. CRC tumor cell lines were infected with retroviruses carrying Spn shRNA (gray) or empty vector (black). After selection, 10,000 cells were seeded in 10-cm dishes. After 10 days of culture in standard conditions, the cells were fixed, and the number of colonies was counted. The graph shows the average of three independent experiments performed in triplicate; error bars indicate the SD. **C)** The same cells as above were seeded in soft agar, and after 21 days, colonies were counted. The graph shows the average of three independent experiments performed in triplicate; error bars indicate SD.