

## Editorials

**Challenges of Evaluating the Cardiac Effects of Anticancer Agents.**  
Susan E. Bates, Douglas R. Rosing, Tito Fojo, and Richard L. Piekarz .....3871

**A Blood-Based Test for Epidermal Growth Factor Receptor Mutations in Lung Cancer.**  
  *Commentary on Kimura et al., p. 3915*  
Daphne W. Bell and Daniel A. Haber .....3875

## The Biology Behind

**Emerging Biology of Malignant Salivary Gland Tumors Offers New Insights into the Classification and Treatment of Mucoepidermoid Cancer.**  
  *Commentary on Okabe et al., p. 3902*  
Frederic J. Kaye .....3878

## Molecular Pathways

**Metastasis Suppressor Proteins: Discovery, Molecular Mechanisms, and Clinical Application.** Carrie W. Rinker-Schaeffer, James P. O'Keefe, Danny R. Welch, and Dan Theodorescu .....3882

## Review

**Immune Escape Associated with Functional Defects in Antigen-Processing Machinery in Head and Neck Cancer.** Robert L. Ferris, Theresa L. Whiteside, and Soldano Ferrone .....3890

## Human Cancer Biology

**Accurate Prediction of BRCA1 and BRCA2 Heterozygous Genotype Using Expression Profiling after Induced DNA Damage.** Zsofia Kote-Jarai, Lucy Matthews, Ana Osorio, Susan Shanley, Ian Giddings, Francois Moreews, Imogen Locke, D. Gareth Evans, Diana Eccles, The Carrier Clinic Collaborators, Richard D. Williams, Mark Girolami, Colin Campbell, and Ros Eeles .....3896

## Imaging, Diagnosis, Prognosis

**MECT1-MAML2 Fusion Transcript Defines a Favorable Subset of Mucoepidermoid Carcinoma.** Mitsukuni Okabe, Satoru Miyabe, Hitoshi Nagatsuka, Akihiro Terada, Nobuhiro Hanai, Motoo Yokoi, Kazuo Shimozato, Tadaaki Eimoto, Shigeo Nakamura, Noriyuki Nagai, Yasuhisa Hasegawa, and Hiroshi Inagaki .....3902

**Exon 19 Deletion Mutations of Epidermal Growth Factor Receptor Are Associated with Prolonged Survival in Non-Small Cell Lung Cancer Patients Treated with Gefitinib or Erlotinib.** David M. Jackman, Beow Y. Yeap, Lecia V. Sequist, Neal Lindeman, Alison J. Holmes, Victoria A. Joshi, Daphne W. Bell, Mark S. Huberman, Balazs Halmos, Michael S. Rabin, Daniel A. Haber, Thomas J. Lynch, Matthew Meyerson, Bruce E. Johnson, and Pasi A. Jänne .....3908

**Detection of Epidermal Growth Factor Receptor Mutations in Serum as a Predictor of the Response to Gefitinib in Patients with Non-Small-Cell Lung Cancer.** Hideharu Kimura, Kazuo Kasahara, Makoto Kawaishi, Hideo Kunitoh, Tomohide Tamura, Brian Holloway, and Kazuto Nishio .....3915

<b>Expression of <math>\Delta Np73</math> and <math>TAp73\alpha</math> Independently Associated with Radiosensitivities and Prognoses in Cervical Squamous Cell Carcinoma.</b> Stephanie Si Liu, Kelvin Yuen-Kwong Chan, Annie Nga-Yin Cheung, Xiao-Yun Liao, Tsin-Wah Leung, and Hextan Yuen-Sheung Ngan .....	<b>3922</b>
<b>Orotate Phosphoribosyltransferase Gene Polymorphism Predicts Toxicity in Patients Treated with Bolus 5-Fluorouracil Regimen.</b> Wataru Ichikawa, Takehiro Takahashi, Kenichi Suto, Yasutsuna Sasaki, and Renzo Hirayama.....	<b>3928</b>
<b>Prognostic Associations of Activated Mitogen-Activated Protein Kinase and Akt Pathways in Glioblastoma.</b> Christopher E. Pelloski, E Lin, Li Zhang, W.K. Alfred Yung, Howard Colman, Juinn-Lin Liu, Shaio Y. Woo, Amy B. Heimberger, Dima Suki, Michael Prados, Susan Chang, Fredrick G. Barker III, Gregory N. Fuller, and Kenneth D. Aldape.....	<b>3935</b>
<b>Positron Emission Tomography Using [<math>^{18}F</math>]Galacto-RGD Identifies the Level of Integrin <math>\alpha_v\beta_3</math> Expression in Man.</b> Ambros J. Beer, Roland Haubner, Mario Sarbia, Michael Goebel, Stephan Luderschmidt, Anca Ligia Grosu, Oliver Schnell, Markus Niemeyer, Horst Kessler, Hans-Jürgen Wester, Wolfgang A. Weber, and Markus Schwaiger.....	<b>3942</b>
<b>Molecular Profiling of Laser-Microdissected Matched Tumor and Normal Breast Tissue Identifies Karyopherin <math>\alpha 2</math> as a Potential Novel Prognostic Marker in Breast Cancer.</b> Edgar Dahl, Glen Kristiansen, Kathrin Gottlob, Irina Klamann, Elke Ebner, Bernd Hinzmann, Klaus Hermann, Christian Pilarsky, Matthias Dürst, Monika Klinkhammer-Schalke, Hagen Blaszyk, Ruth Knuechel, Arndt Hartmann, André Rosenthal, and Peter J. Wild .....	<b>3950</b>
<b>8q Gain Is an Independent Predictor of Poor Survival in Diagnostic Needle Biopsies from Prostate Cancer Suspects.</b> Franclim R. Ribeiro, Carmen Jerónimo, Rui Henrique, Daniel Fonseca, Jorge Oliveira, Ragnhild A. Lothe, and Manuel R. Teixeira.....	<b>3961</b>
<b>Clinical Significance of Aminopeptidase N in Non-Small Cell Lung Cancer.</b> Takahiro Tokuhara, Noboru Hattori, Hisao Ishida, Tatsuya Hirai, Masahiko Higashiyama, Ken Kodama, and Masayuki Miyake.....	<b>3971</b>
<b>Concomitant Analysis of Salivary Tumor Markers—A New Diagnostic Tool for Oral Cancer.</b> Rafael Nagler, Gideon Bahar, Thomas Shpitzer, and Raphael Feinmesser .....	<b>3979</b>

## Cancer Therapy: Clinical

<b>A Distinct p53 Protein Isoform Signature Reflects the Onset of Induction Chemotherapy for Acute Myeloid Leukemia.</b> Nina Anensen, Anne Margrete Oyan, Jean-Christophe Bourdon, Karl Henning Kalland, Oystein Bruserud, and Bjorn Tore Gjertsen.....	<b>3985</b>
<b>A Phase I Study of Ultra Low Dose Interleukin-2 and Stem Cell Factor in Patients with HIV Infection or HIV and Cancer.</b> Manisha H. Shah, Aharon G. Freud, Don M. Benson, Jr., Amy K. Ferkitich, Bruce J. Dezube, Zale P. Bernstein, and Michael A. Caligiuri .....	<b>3993</b>
<b>Cardiotoxicity of Histone Deacetylase Inhibitor Depsipeptide in Patients with Metastatic Neuroendocrine Tumors.</b> Manisha H. Shah, Philip Binkley, Kenneth Chan, Jim Xiao, Daria Arbogast, Minden Collamore, Yasser Farra, Donn Young, and Michael Grever.....	<b>3997</b>
<b>Phase I Trial of Doxorubicin-Containing Low Temperature Sensitive Liposomes in Spontaneous Canine Tumors.</b> Marlene L. Hauck, Susan M. LaRue, William P. Petros, Jean M. Poulson, Daohai Yu, Ivan Spasojevic, Amy F. Pruitt, Allison Klein, Beth Case, Donald E. Thrall, David Needham, and Mark W. Dewhirst.....	<b>4004</b>
<b>Clinical and Pharmacokinetic Study of Clofarabine in Chronic Lymphocytic Leukemia: Strategy for Treatment.</b> Varsha Gandhi, William Plunkett, Peter L. Bonate, Min Du, Billie Nowak, Susan Lerner, and Michael J. Keating .....	<b>4011</b>

---

**Phase II Study of Pomegranate Juice for Men with Rising Prostate-Specific Antigen following Surgery or Radiation for Prostate Cancer.** Allan J. Pantuck, John T. Leppert, Nazy Zomorodian, William Aronson, Jenny Hong, R. James Barnard, Navindra Seeram, Harley Liker, Hejing Wang, Robert Elashoff, David Heber, Michael Aviram, Louis Ignarro, and Arie Beldegrun .....4018

## Cancer Therapy: Preclinical

---

**Complement-Induced Cell Death by Rituximab Depends on CD20 Expression Level and Acts Complementary to Antibody-Dependent Cellular Cytotoxicity.** Tom van Meerten, Rozemarijn S. van Rijn, Samantha Hol, Anton Hagenbeek, and Saskia B. Ebeling .....4027

**Humanization of the Bispecific Epidermal Growth Factor Receptor × CD3 Diabody and Its Efficacy as a Potential Clinical Reagent.** Ryutaro Asano, Yukiko Sone, Koki Makabe, Kouhei Tsumoto, Hiroki Hayashi, Yu Katayose, Michiaki Unno, Toshio Kudo, and Izumi Kumagai.....4036

**Establishment in Severe Combined Immunodeficiency Mice of Subrenal Capsule Xenografts and Transplantable Tumor Lines from a Variety of Primary Human Lung Cancers: Potential Models for Studying Tumor Progression-Related Changes.** Jean-Claude Cutz, Jun Guan, Jane Bayani, Maisa Yoshimoto, Hui Xue, Margaret Sutcliffe, John English, Julia Flint, Jean LeRiche, John Yee, Jeremy A. Squire, Peter W. Gout, Stephen Lam, and Yu-Zhuo Wang.....4043

**Ex vivo and In vivo Delivery of Anti-Tissue Factor Short Interfering RNA Inhibits Mouse Pulmonary Metastasis of B16 Melanoma Cells.** Mohammed Amarzguioui, Qian Peng, Merete T. Wiiger, Vlada Vasovic, Eshrat Babaie, Torgeir Holen, Jahn M. Nesland, and Hans Prydz.....4055

**Natural and Synthetic Progestins Accelerate 7,12-Dimethylbenz[a]Anthracene-Initiated Mammary Tumors and Increase Angiogenesis in Sprague-Dawley Rats.** Indira Benakanakere, Cynthia Besch-Williford, Jennifer Schnell, Sandra Brandt, Mark R. Ellersieck, Alfredo Molinolo, and Salman M. Hyder.....4062

**Pharmacologic Basis for the Enhanced Efficacy of Dutasteride against Prostatic Cancers.** Yi Xu, Susan L. Dalrymple, Robyn E. Becker, Samuel R. Denmeade, and John T. Isaacs.....4072

**PHA-680632, a Novel Aurora Kinase Inhibitor with Potent Antitumoral Activity.** Chiara Soncini, Patrizia Carpinelli, Laura Gianellini, Daniele Fancelli, Paola Vianello, Luisa Rusconi, Paola Storici, Paola Zugnoni, Enrico Pesenti, Valter Croci, Roberta Ceruti, Maria Laura Giorgini, Paolo Cappella, Dario Ballinari, Francesco Sola, Mario Varasi, Rodrigo Bravo, and Jürgen Moll .....4080

**Effect of the Second-Generation Vascular Disrupting Agent OXi4503 on Tumor Vascularity.** Howard W. Salmon and Dietmar W. Siemann .....4090

**Captopril, an Angiotensin-Converting Enzyme Inhibitor, Promotes Growth of Immunogenic Tumors in Mice.** Piotr J. Wysocki, Eliza P. Kwiatkowska, Urszula Kazimierzak, Wiktoria Suchorska, Dariusz W. Kowalczyk, and Andrzej Mackiewicz.....4095

**Signaling via ErbB2 and ErbB3 Associates with Resistance and Epidermal Growth Factor Receptor (EGFR) Amplification with Sensitivity to EGFR Inhibitor Gefitinib in Head and Neck Squamous Cell Carcinoma Cells.** Kaisa Erjala, Maria Sundvall, Teemu T. Junttila, Na Zhang, Mika Savisalo, Pekka Mali, Jarmo Kulmala, Jaakko Pulkkinen, Reidar Grenman, and Klaus Elenius.....4103

**Calcitonin Gene-Related Peptide and Substance P Regulate the Intestinal Radiation Response.** Junru Wang, Xiaohua Qiu, Ashwini Kulkarni, and Martin Hauer-Jensen.....4112

**Blockage of Epidermal Growth Factor Receptor-Phosphatidylinositol 3-Kinase-AKT Signaling Increases Radiosensitivity of K-RAS Mutated Human Tumor Cells In vitro by Affecting DNA Repair.** Mahmoud Toulany, Ulla Kasten-Pisula, Ingo Brammer, Shaomeng Wang, Jianyong Chen, Klaus Dittmann, Michael Baumann, Ekkehard Dikomey, and H. Peter Rodemann .....4119

---

## Letters to the Editor

- ABCB1 2677G>T/A Genotype and Paclitaxel Pharmacogenetics in Ovarian Cancer.**  
Sharon Marsh, Cristi R. King, Howard L. McLeod, Jim Paul, Gillian Gifford, and Robert Brown.....4127
- Reply to the Letter to the Editor by Marsh et al.** Henrik Gréen, Curt Peterson, Peter Söderkvist,  
Per Rosenberg, and György Horvath.....4127

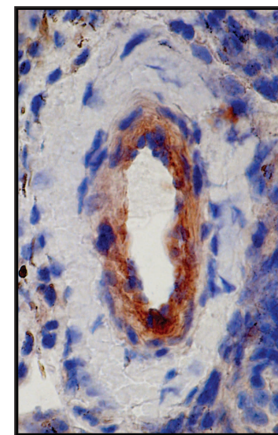
## Correction

- Article on Sex-Specific Survival Advantage with Parathyroid Hormone—Related Protein** .....4130

---

## About the Cover

The  $\alpha\beta3$  integrin is a key player in angiogenesis and tumor metastasis. The cover image shows an immunohistochemical stain of  $\alpha\beta3$  expression on the endothelium of a microvessel in a pigmented villonodular synovitis. In the same lesion,  $\alpha\beta3$  expression could also be demonstrated noninvasively by positron emission tomography (PET) using the  $\alpha\beta3$  selective tracer [ $^{18}\text{F}$ ]Galacto-RGD. The authors demonstrate that [ $^{18}\text{F}$ ]Galacto-RGD PET successfully identifies the level of  $\alpha\beta3$  expression in man noninvasively. For further details, please see Beer *et al.* on page 3942.



# Clinical Cancer Research

**12 (13)**

*Clin Cancer Res* 2006;12:3871-4130.

**Updated version** Access the most recent version of this article at:  
<http://clincancerres.aacrjournals.org/content/12/13>

**E-mail alerts** [Sign up to receive free email-alerts](#) related to this article or journal.

**Reprints and Subscriptions** To order reprints of this article or to subscribe to the journal, contact the AACR Publications Department at [pubs@aacr.org](mailto:pubs@aacr.org).

**Permissions** To request permission to re-use all or part of this article, use this link <http://clincancerres.aacrjournals.org/content/12/13>. Click on "Request Permissions" which will take you to the Copyright Clearance Center's (CCC) Rightslink site.