

## The Biology Behind

### Antisense to Cyclin D1 Inhibits VEGF-Stimulated Growth of Vascular Endothelial Cells: Implication of Tumor Vascularization.

□□ Commentary on Yasui *et al.*, p. 4720

Richard G. Pestell and Zhiping Li .....4459

## Molecular Pathways

### Targeting the Double-Strand DNA Break Repair Pathway as a Therapeutic Strategy.

Christopher J. Lord, Michelle D. Garrett, and Alan Ashworth .....4463

## Review

**Statistical Analysis of DNA Microarray Data in Cancer Research.** Jianqing Fan and Yi Ren .....4469

## Human Cancer Biology

### The Chemokine CCL5 as a Potential Prognostic Factor Predicting Disease Progression in Stage II Breast Cancer Patients.

Neora Yaal-Hahoshen, Sima Shina, Leonor Leider-Trejo, Itay Barnea, Esther L. Shabtai, Elina Azenshtein, Iulia Greenberg, Iafa Keydar, and Adit Ben-Baruch .....4474

### Oxaliplatin and Axonal Na<sup>+</sup> Channel Function *In vivo*.

Arun V. Krishnan, David Goldstein, Michael Friedlander, and Matthew C. Kiernan .....4481

### RhoC GTPase Expression as a Potential Marker of Lymph Node Metastasis in Squamous Cell Carcinomas of the Head and Neck.

Celina G. Kleer, Theodoros N. Teknos, Mozaffarul Islam, Benjamin Marcus, Julia Shin-Jung Lee, Quintin Pan, and Sofia D. Merajver .....4485

### Induction of Interleukin-6 by Hepatitis C Virus Core Protein in Hepatitis C-Associated Mixed Cryoglobulinemia and B-Cell Non-Hodgkin's Lymphoma.

Georg Feldmann, Hans Dieter Nischalke, Jacob Nattermann, Brigitte Banas, Thomas Berg, Christian Teschendorf, Wolff Schmiegel, Ulrich Dührsen, Juliane Halangk, Agathe Iwan, Tilman Sauerbruch, Wolfgang H. Caselmann, and Ulrich Spengler .....4491

### Cutaneous Melanoma Subtypes Show Different BRAF and NRAS Mutation Frequencies.

Gerald Saldanha, Linda Potter, Philip DaForno, and J. Howard Pringle .....4499

### Hypoxia-Inducible Factor-1 $\alpha$ and Hypoxia-Inducible Factor-2 $\alpha$ Are Expressed in Kaposi Sarcoma and Modulated by Insulin-like Growth Factor-I.

Sergiu-Bogdan Catrina, Ileana Ruxandra Botusan, Anja Rantanen, Anca Irinel Catrina, Pawan Pyakurel, Octavian Savu, Magnus Axelson, Peter Biberfeld, Lorenz Poellinger, and Kerstin Brismar .....4506

### Accumulation of Promoter Methylation Suggests Epigenetic Progression in Squamous Cell Carcinoma of the Esophagus.

Mingzhou Guo, Jingli Ren, Michael G. House, Yu Qi, Malcolm V. Brock, and James G. Herman .....4515

### *In vitro* Drug Response and Molecular Markers Associated with Drug Resistance in Malignant Gliomas.

John P. Fruehauf, Henry Brem, Steven Brem, Andrew Sloan, Geoffrey Barger, Weidong Huang, and Ricardo Parker .....4523

## Imaging, Diagnosis, Prognosis

### Prognosis and Gene Expression Profiling of 20q13-Amplified Breast Cancers.

Christophe Ginestier, Nathalie Cervera, Pascal Finetti, Séverine Esteyries, Benjamin Esterni, José Adélaïde, Luc Xerri, Patrice Viens, Jocelyne Jacquemier, Emmanuelle Charafe-Jauffret, Max Chaffanet, Daniel Birnbaum, and François Bertucci .....4533

- A Validated Quantitative Assay to Detect Occult Micrometastases by Reverse Transcriptase-Polymerase Chain Reaction of Guanylyl Cyclase C in Patients with Colorectal Cancer.** Stephanie Schulz, Terry Hyslop, Janis Haaf, Christine Bonaccorso, Karl Nielsen, Matthew E. Witek, Ruth Birbe, Juan Palazzo, David Weinberg, and Scott A. Waldman .....4545
- Expression of Late Cell Cycle Genes and an Increased Proliferative Capacity Characterize Very Early Relapse of Childhood Acute Lymphoblastic Leukemia.** Renate Kirschner-Schwabe, Claudio Lottaz, Jörn Tödling, Peter Rhein, Leonid Karawajew, Cornelia Eckert, Arend von Stackelberg, Ute Ungethüm, Dennis Kostka, Andreas E. Kulozik, Wolf-Dieter Ludwig, Günter Henze, Rainer Spang, Christian Hagemeyer, and Karl Seeger .....4553
- Hypoxia-Inducible Factor-1 $\alpha$  Expression Predicts a Poor Response to Primary Chemoendocrine Therapy and Disease-Free Survival in Primary Human Breast Cancer.** Daniele Generali, Alfredo Berruti, Maria P. Brizzi, Leticia Campo, Simone Bonardi, Simon Wigfield, Alessandra Bersiga, Giovanni Allevi, Manuela Milani, Sergio Aguggini, Valeria Gandolfi, Luigi Dogliotti, Alberto Bottini, Adrian L. Harris, and Stephen B. Fox.....4562
- DNA Integrity Assay: A Plasma-Based Screening Tool for the Detection of Prostate Cancer.** Robert Hanley, Kimberly M. Rieger-Christ, David Canes, Norah R. Emara, Anthony P. Shuber, Kevin A. Boynton, John A. Libertino, and Ian C. Summerhayes.....4569
- Endocan Expression and Relationship with Survival in Human Non-Small Cell Lung Cancer.** Bogdan Dragos Grigoriu, Florence Depondieu, Arnaud Scherpereel, Delphine Gourcerol, Patrick Devos, Taoufik Ouatas, Jean-Jacques Lafitte, Marie-Christine Copin, Andre-Bernard Tonnel, Philippe Lassalle, and The Thoracic Oncology Group .....4575
- Predicting Cancer Drug Response by Proteomic Profiling.** Yan Ma, Zhenyu Ding, Yong Qian, Xianglin Shi, Vince Castranova, E. James Harner, and Lan Guo .....4583
- Early Detection of Chemoradioresponse in Esophageal Carcinoma by 3'-Deoxy-3'-<sup>3</sup>H-Fluorothymidine Using Preclinical Tumor Models.** Smith Apisarnthanarax, Mian M. Alauddin, Firas Mourtada, Hisanori Ariga, Uma Raju, Osama Mawlawi, Dongmei Han, William G. Bornmann, Jaffer A. Ajani, Luka Milas, Juri G. Gelovani, and K.S. Clifford Chao.....4590
- Expression of Annexin A1 in Esophageal and Esophagogastric Junction Adenocarcinomas: Association with Poor Outcome.** Kim L. Wang, Tsung-Teh Wu, Erika Resetkova, Huamin Wang, Arlene M. Correa, Wayne L. Hofstetter, Stephen G. Swisher, Jaffer A. Ajani, Asif Rashid, Stanley R. Hamilton, and Constance T. Albarracin .....4598
- The Prognostic Value of Circulating Tumor Cells in Patients with Melanoma: A Systematic Review and Meta-analysis.** Simone Mocellin, Dave Hoon, Alessandro Ambrosi, Donato Nitti, and Carlo Riccardo Rossi.....4605
- High Progesterone Receptor Expression Correlates to the Effect of Adjuvant Tamoxifen in Premenopausal Breast Cancer Patients.** Maria Stendahl, Lisa Rydén, Bo Nordenskjöld, Per Ebbe Jönsson, Göran Landberg, and Karin Jirstrom .....4614

## Cancer Therapy: Clinical

- Phase I Trial of Sequential Low-Dose 5-Aza-2'-Deoxycytidine Plus High-Dose Intravenous Bolus Interleukin-2 in Patients with Melanoma or Renal Cell Carcinoma.** Jared A. Gollob, Catherine J. Sciambi, Bercedis L. Peterson, Tina Richmond, Monica Thoreson, Kelly Moran, Holly K. Dressman, Jaroslav Jelinek, and Jean-Pierre J. Issa.....4619
- A Phase I Study of Intravenous LBH589, a Novel Cinnamic Hydroxamic Acid Analogue Histone Deacetylase Inhibitor, in Patients with Refractory Hematologic Malignancies.** Francis Giles, Thomas Fischer, Jorge Cortes, Guillermo Garcia-Manero, Joachim Beck, Farhad Ravandi, Eric Masson, Patricia Rae, Glen Laird, Sunil Sharma, Hagop Kantarjian, Margaret Dugan, Maher Albitar, and Kapil Bhalla .....4628
- Influence of Garlic (*Allium sativum*) on the Pharmacokinetics of Docetaxel.** Michael C. Cox, Jennifer Low, James Lee, Janice Walshe, Neelima Denduluri, Arlene Berman, Matthew G. Permenter, William P. Petros, Douglas K. Price, William D. Figg, Alex Sparreboom, and Sandra M. Swain.....4636

---

**Effect of Human Leukocyte Antigen Class I Expression of Tumor Cells on Outcome of Intravesical Instillation of Bacillus Calmette-Guerin Immunotherapy for Bladder Cancer.** Hiroshi Kitamura, Toshihiko Torigoe, Ichiya Honma, Eiji Sato, Hiroko Asanuma, Yoshihiko Hirohashi, Noriyuki Sato, and Taiji Tsukamoto .....4641

**Increased Bioavailability of Intravenous Versus Oral CI-1033, a Pan erbB Tyrosine Kinase Inhibitor: Results of a Phase I Pharmacokinetic Study.** George R. Simon, Christopher R. Garrett, Stephen C. Olson, Michael Langevin, Irene A. Eiseman, John J. Mahany, Charles C. Williams, Richard Lush, Adil Daud, Pamela Munster, Alberto Chiappori, Mayer Fishman, Gerold Bepler, Peter F. Lenehan, and Daniel M. Sullivan .....4645

## Cancer Therapy: Preclinical

---

**An *In vivo* Platform for Translational Drug Development in Pancreatic Cancer.** Belen Rubio-Viqueira, Antonio Jimeno, George Cusatis, Xianfeng Zhang, Christine Iacobuzio-Donahue, Collins Karikari, Chanjuns Shi, Kathleen Danenberg, Peter V. Danenberg, Hidekazu Kuramochi, Koji Tanaka, Sharat Singh, Hossein Salimi-Moosavi, Nadia Bouraoud, Maria L. Amador, Soner Altioek, Piotr Kulesza, Charles Yeo, Wells Messersmith, James Eshleman, Ralph H. Hruban, Anirban Maitra, and Manuel Hidalgo.....4652

**Effect of Altering Dietary  $\omega$ -6/ $\omega$ -3 Fatty Acid Ratios on Prostate Cancer Membrane Composition, Cyclooxygenase-2, and Prostaglandin E<sub>2</sub>.** Naoko Kobayashi, R. James Barnard, Susanne M. Henning, David Elashoff, Srinivasa T. Reddy, Pinchas Cohen, Pak Leung, Jenny Hong-Gonzalez, Stephen J. Freedland, Jonathan Said, Dorina Gui, Navindra P. Seeram, Laura M. Popoviciu, Dilprit Bagga, David Heber, John A. Glaspy, and William J. Aronson.....4662

**Mutations Within the Kinase Domain and Truncations of the Epidermal Growth Factor Receptor Are Rare Events in Bladder Cancer: Implications for Therapy.** Kelly N. Blehm, Philippe E. Spiess, Jolanta E. Bondaruk, Melanie E. Dujka, Gabriel J. Villares, Yi-jue Zhao, Oliver Bogler, Kenneth D. Aldape, H. Barton Grossman, Liana Adam, David J. McConkey, Bogdan A. Czerniak, Colin P. Dinney, and Menashe Bar-Eli .....4671

**Intratumoral Therapy with IL13-PE38 Results in Effective CTL-Mediated Suppression of IL-13R $\alpha$ 2-Expressing Contralateral Tumors.** Koji Kawakami, Masaki Terabe, Mitomu Kioi, Jay A. Berzofsky, and Raj K. Puri .....4678

**Valproic Acid Prolongs Survival Time of Severe Combined Immunodeficient Mice Bearing Intracerebellar Orthotopic Medulloblastoma Xenografts.** Qin Shu, Barbara Antalfy, Jack Meng Feng Su, Adekunle Adesina, Ching-Nan Ou, Torsten Pietsch, Susan M. Blaney, Ching C. Lau, and Xiao-Nan Li.....4687

**Synergistic Antitumor Activity of Taxol and Immunotoxin SS1P in Tumor-Bearing Mice.** Yujian Zhang, Laiman Xiang, Raffit Hassan, Chang H. Paik, Jorge A. Carrasquillo, Beom-su Jang, Nhat Le, Mitchell Ho, and Ira Pastan .....4695

**Minicircle-IFN $\gamma$  Induces Antiproliferative and Antitumoral Effects in Human Nasopharyngeal Carcinoma.** Jiangxue Wu, Xia Xiao, Peng Zhao, Gang Xue, Yinghui Zhu, Xiaofeng Zhu, Limin Zheng, Yixin Zeng, and Wenlin Huang.....4702

**Low-Dose Combretastatin A4 Phosphate Enhances the Immune Response of Tumor Hosts to Experimental Colon Carcinoma.** Wiaam Badn, Suzanne Kalliomäki, Bengt Widegren, and Hans Olov Sjögren.....4714

**Antisense to Cyclin D1 Inhibits Vascular Endothelial Growth Factor–Stimulated Growth of Vascular Endothelial Cells: Implication of Tumor Vascularization.** Masayoshi Yasui, Hirofumi Yamamoto, Chew Yee Ngan, Bazarragchaa Damdinsuren, Yurika Sugita, Hiroki Fukunaga, Jinyu Gu, Makiko Maeda, Ichiro Takemasa, Masataka Ikeda, Yasushi Fujio, Mitsugu Sekimoto, Nariaki Matsuura, I. Bernard Weinstein, and Morito Monden.....4720

**The Combination of Ionizing Radiation and Peripheral Vaccination Produces Long-term Survival of Mice Bearing Established Invasive GL261 Gliomas.** Elizabeth W. Newcomb, Sandra Demaria, Yevgeniy Lukyanov, Yongzhao Shao, Tona Schnee, Noriko Kawashima, Li Lan, J. Keith Dewyngaert, David Zagzag, William H. McBride, and Silvia C. Formenti.....4730

<b>Temozolomide-Mediated Radiation Enhancement in Glioblastoma: A Report on Underlying Mechanisms.</b> Arnab Chakravarti, Michael G. Erkinen, Ulf Nestler, Roger Stupp, Minesh Mehta, Ken Aldape, Mark R. Gilbert, Peter McL. Black, and Jay S. Loeffler.....	4738
<b>Hypoxia-Inducible Factor-1 Inhibition in Combination with Temozolomide Treatment Exhibits Robust Antitumor Efficacy <i>In vivo</i>.</b> Leiming Li, Xiaoyu Lin, Alex R. Shoemaker, Daniel H. Albert, Stephen W. Fesik, and Yu Shen .....	4747
<b>Growth-Inhibitory Effects of Human Anti-Insulin-Like Growth Factor-I Receptor Antibody (A12) in an Orthotopic Nude Mouse Model of Anaplastic Thyroid Carcinoma.</b> Zhuoying Wang, Geetika Chakravarty, Seungwon Kim, Yasemin D. Yazici, Maher N. Younes, Samar A. Jasser, Alfredo A. Santillan, Corazon D. Bucana, Adel K. El-Naggar, and Jeffrey N. Myers.....	4755

## Cancer Prevention

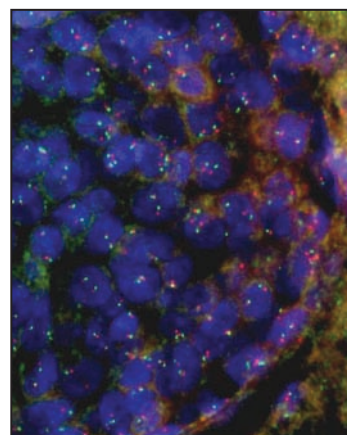
<b>Effects of Long-term Rofecoxib on Gastric Intestinal Metaplasia: Results of a Randomized Controlled Trial.</b> Wai K. Leung, Enders K.W. Ng, Francis K.L. Chan, Wing Y. Chan, Kui-fat Chan, Alex C.M. Auyeung, Candice C.H. Lam, James Y.W. Lau, and Joseph J.Y. Sung.....	4766
<b>Expression of Carcinoembryonic Antigen Cell Adhesion Molecule 6 Oncoprotein in Atypical Ductal Hyperplastic Tissues Is Associated with the Development of Invasive Breast Cancer.</b> Indira Poola, Babok Shokrani, Rakesh Bhatnagar, Robert L. DeWitty, Qingqi Yue, and George Bonney .....	4773

## Letters to the Editor

<b>Genetic Effect of ERCC1 Codon 118 Polymorphism and Confounding Factors.</b> Jeong Seon Ryu.....	4784
<b>Reply to Letter to the Editor by Ryu et al.</b> Jérôme Viguier and Françoise Praz .....	4784

## About the Cover

Three potential driver genes of the 20q13 amplification were studied: *MYBL2*, *ZNF217*, and *STK6*, using fluorescence *in situ* hybridization (FISH) of locus-specific BAC probes on sections of 466 breast tumors arrayed in tissue microarrays. The authors observed two types of amplification. In the first type, the *ZNF217* locus was amplified, but amplification was not detected at the two other loci. In the second type, the amplified region seemed larger and involved two or three loci. The two types showed different gene expression profiles and were associated with different histoclinical features, including lymph node status and survival. For further details, please see Ginestier *et al.* on page 4533 in this issue.



# Clinical Cancer Research

**12 (15)**

*Clin Cancer Res* 2006;12:4459-4785.

**Updated version** Access the most recent version of this article at:  
<http://clincancerres.aacrjournals.org/content/12/15>

**E-mail alerts** [Sign up to receive free email-alerts](#) related to this article or journal.

**Reprints and Subscriptions** To order reprints of this article or to subscribe to the journal, contact the AACR Publications Department at [pubs@aacr.org](mailto:pubs@aacr.org).

**Permissions** To request permission to re-use all or part of this article, use this link <http://clincancerres.aacrjournals.org/content/12/15>. Click on "Request Permissions" which will take you to the Copyright Clearance Center's (CCC) Rightslink site.