

Editor's Note

Updates.

William N. Hait.....5605

Editorial

Cancer Stem Cells and Metastasis: Lethal Seeds.

Commentary on Balic et al., p. 5615

Max S. Wicha.....5606

The Biology Behind

Monitoring Targeted Therapy: Is Fluorodeoxyglucose Uptake a Marker of Early Response?

Commentary on Su et al., p. 5659

Hannah M. Linden, Kenneth A. Krohn, Robert B. Livingston, and David A. Mankoff.....5608

Molecular Pathways

Insulin-Like Growth Factor-I Axis as a Pathway for Cancer Chemoprevention.

Vaqar Mustafa Adhami, Farrukh Afaq, and Hasan Mukhtar.....5611

Human Cancer Biology

Most Early Disseminated Cancer Cells Detected in Bone Marrow of Breast Cancer Patients Have a Putative Breast Cancer Stem Cell Phenotype.

Marija Balic, Henry Lin, Lillian Young, Debra Hawes, Armando Giuliano, George McNamara, Ram H. Datar, and Richard J. Cote5615

Magnitude of Stromal Hemangiogenesis Correlates with Histologic Subtype of Non-Hodgkin's Lymphoma.

Jia Ruan, Elizabeth Hyjek, Pouneh Kermani, Paul J. Christos, Andrea T. Hooper, Morton Coleman, Barbara Hempstead, John P. Leonard, Amy Chadburn, and Shahin Rafii5622

Gene Expression Profiling in Cervical Cancer: An Exploration of Intratumor Heterogeneity.

Barbara Bachtary, Paul C. Boutros, Melania Pintilie, Willa Shi, Carlo Bastianutto, Jian-Hua Li, Joerg Schwock, Wendy Zhang, Linda Z. Penn, Igor Jurisica, Anthony Fyles, and Fei-Fei Liu.....5632

Estrogenic Regulation of Host Immunity against an Estrogen Receptor-Negative Human Breast Cancer.

Edward M. Curran, Barbara M. Judy, Ngozi A. Duru, Hui-Qun Wang, Leoncio A. Vergara, Dennis B. Lubahn, and D. Mark Estes.....5641

Expression of Terminally Glycosylated Calcitonin Receptor-Like Receptor in Uterine Leiomyoma: Endothelial Phenotype and Association with Microvascular Density.

Leonid L. Nikitenko, Tanya Cross, Leticia Campo, Helen Turley, Russell Leek, Sanjiv Manek, Roy Bicknell, and Margaret C.P. Rees5648

Imaging, Diagnosis, Prognosis

Monitoring Tumor Glucose Utilization by Positron Emission Tomography for the Prediction of Treatment Response to Epidermal Growth Factor Receptor Kinase Inhibitors.

Helen Su, Claudia Bodenstern, Rebecca A. Dumont, Yann Seimbille, Steven Dubinett, Michael E. Phelps, Harvey Herschman, Johannes Czernin, and Wolfgang Weber.....5659

Interphase Fluorescence *In situ* Hybridization Analysis of Chromosome 12p Abnormalities Is Useful for Distinguishing Epidermoid Cysts of the Testis from Pure Mature Teratoma.

Liang Cheng, Shaobo Zhang, Gregory T. MacLennan, Christopher K. Poulos, Ming-Tse Sung, Stephen D. Beck, and Richard S. Foster5668

Increased Expression of Wiskott-Aldrich Syndrome Protein Family Verprolin-Homologous Protein 2 Correlated with Poor Prognosis of Hepatocellular Carcinoma.

Lian-Yue Yang, Yi-Ming Tao, Di-Peng Ou, Wei Wang, Zhi-Gang Chang, and Fan Wu5673

Peripheral Blood Stem Cell Tumor Cell Contamination and Survival of Neuroblastoma Patients. Maria Valeria Corrias, Riccardo Haupt, Barbara Carlini, Stefano Parodi, Lucia Rivabella, Alberto Garaventa, Vito Pistoia, and Sandro Dallorso.....	5680
The GNAS1 T393C Polymorphism Is Associated with Disease Progression and Survival in Chronic Lymphocytic Leukemia. Ulrich H. Frey, Holger Nüchel, Ludger Sellmann, Dörte Siemer, Ralf Küppers, Jan Dürig, Ulrich Dührsen, and Winfried Siffert.....	5686
Does MYCN Amplification Manifested as Homogeneously Staining Regions at Diagnosis Predict a Worse Outcome in Children with Neuroblastoma? A Children's Oncology Group Study. Lisa A. Moreau, Patrick McGrady, Wendy B. London, Hiroyuki Shimada, Susan L. Cohn, John M. Maris, Lisa Diller, A. Thomas Look, and Rani E. George	5693
YKL-40 and Matrix Metalloproteinase-9 as Potential Serum Biomarkers for Patients with High-Grade Gliomas. Adília Hormigo, Bin Gu, Sasan Karimi, Elyn Riedel, Katherine S. Panageas, Mark A. Edgar, Meena K. Tanwar, Jasti S. Rao, Martin Fleisher, Lisa M. DeAngelis, and Eric C. Holland.....	5698
Gene Expression Profiles of Primary Breast Carcinomas from Patients at High Risk for Local Recurrence after Breast-Conserving Therapy. Bas Kreike, Hans Halfwerk, Petra Kristel, Annuska Glas, Hans Peterse, Harry Bartelink, and Marc J. van de Vijver	5705
RNASEL Gene Polymorphisms and the Risk of Prostate Cancer: a Meta-analysis. Huihua Li and Bee Choo Tai.....	5713
Expression of Telomere-Associated Genes as Prognostic Markers for Overall Survival in Patients with Non-Small Cell Lung Cancer. Xin Lin, Jian Gu, Charles Lu, Margaret R. Spitz, and Xifeng Wu.....	5720
Prognostic Significance of the Epstein-Barr Virus, p53, Bcl-2, and Survivin in Nasopharyngeal Cancer. Kenneth W. Yip, Wei Shi, Melania Pintilie, Joseph D. Martin, Joseph D. Mocanu, Derek Wong, Christine MacMillan, Pat Gullane, Brian O'Sullivan, Carlo Bastianutto, and Fei-Fei Liu	5726
Extracellular pH and P-31 Magnetic Resonance Spectroscopic Variables are Related to Outcome in Canine Soft Tissue Sarcomas Treated with Thermoradiotherapy. Michaël Lora-Michiels, Daohai Yu, Linda Sanders, Jean M. Poulson, Chieko Azuma, Beth Case, Zeljko Vujaskovic, Donald E. Thrall, H. Cecil Charles, and Mark W. Dewhirst.....	5733
Nuclear Localization of Nuclear Factor-κB p65 in Primary Prostate Tumors Is Highly Predictive of Pelvic Lymph Node Metastases. Laurent Lessard, Pierre I. Karakiewicz, Pascale Bellon-Gagnon, Mona Alam-Fahmy, Hazem A. Ismail, Anne-Marie Mes-Masson, and Fred Saad	5741
Identification of α-Enolase as an Autoantigen in Lung Cancer: Its Overexpression Is Associated with Clinical Outcomes. Gee-Chen Chang, Ko-Jiunn Liu, Chia-Ling Hsieh, Tsai-Shu Hu, Suparat Charoenfuprasert, Hsiung-Kun Liu, Kwen-Tay Luh, Li-Han Hsu, Chew-Wen Wu, Chou-Chik Ting, Chih-Yi Chen, Kun-Chieh Chen, Tsung-Ying Yang, Teh-Ying Chou, Wen-Hua Wang, Jacqueline Whang-Peng, and Neng-Yao Shih	5746

Cancer Therapy: Clinical

A Phase I and Pharmacokinetic Study of Temezolimus (CCI-779) Administered Intravenously Daily for 5 Days Every 2 Weeks to Patients with Advanced Cancer. Manuel Hidalgo, Jan C. Buckner, Charles Erlichman, Marilyn S. Pollack, Joseph P. Boni, Gary Dukart, Bonnie Marshall, Lisa Speicher, Laurence Moore, and Eric K. Rowinsky.....	5755
Analysis of Epidermal Growth Factor Receptor Gene Mutation in Patients with Non-Small Cell Lung Cancer and Acquired Resistance to Gefitinib. Takayuki Kosaka, Yasushi Yatabe, Hideki Endoh, Kimihide Yoshida, Toyoaki Hida, Masahiro Tsuboi, Hirohito Tada, Hiroyuki Kuwano, and Tetsuya Mitsudomi	5764
Randomized Study of Paclitaxel and Tamoxifen Deposition into Human Brain Tumors: Implications for the Treatment of Metastatic Brain Tumors. Robert L. Fine, Johnson Chen, Casilda Balmaceda, Jeffrey N. Bruce, May Huang, Manisha Desai, Michael B. Sisti, Guy M. McKhann, Robert R. Goodman, Joseph S. Bertino, Jr., Anne N. Nafziger, and Michael R. Fetell	5770

Phase I Study of Decitabine-Mediated Gene Expression in Patients with Cancers Involving the Lungs, Esophagus, or Pleura. David S. Schrupp, Maria R. Fischette, Dao M. Nguyen, Ming Zhao, Xinmin Li, Tricia F. Kunst, Ana Hancox, Julie A. Hong, G. Aaron Chen, Vitaliy Pishchik, William D. Figg, Anthony J. Murgo, and Seth M. Steinberg.....	5777
Pharmacogenetic Screening of CYP3A and ABCB1 in Relation to Population Pharmacokinetics of Docetaxel. Tessa M. Bosch, Alwin D.R. Huitema, Valerie D. Doodeman, Robert Jansen, Els Witteveen, Wim M. Smit, Rob L. Jansen, Carla M. van Herpen, Marcel Soesan, Jos H. Beijnen, and Jan H.M. Schellens	5786
Overexpression of Caspase-3s Splice Variant in Locally Advanced Breast Carcinoma Is Associated with Poor Response to Neoadjuvant Chemotherapy. Frédérique Végran, Romain Boidot, Claire Oudin, Jean-Marc Riedinger, Franck Bonnetain, and Sarab Lizard-Nacol.....	5794
Intralymphatic Dendritic Cell Vaccination Induces Tumor Antigen-Specific, Skin-Homing T Lymphocytes. Amelia Grover, Grace J. Kim, Gregory Lizée, Mary Tsochi, Gang Wang, John R. Wunderlich, Steven A. Rosenberg, Sam T. Hwang, and Patrick Hwu	5801
Phase I Study of Bryostatins 1 and Fludarabine in Patients with Chronic Lymphocytic Leukemia and Indolent (Non-Hodgkin's) Lymphoma. John D. Roberts, Mitchell R. Smith, Eric J. Feldman, Louise Cragg, Michael M. Millenson, Gail J. Roboz, Connie Honeycutt, Rose Thune, Kristin Padavic-Shaller, W. Hans Carter, Viswanathan Ramakrishnan, Anthony J. Murgo, and Steven Grant	5809

Cancer Therapy: Preclinical

Cisplatin Preferentially Binds Mitochondrial DNA and Voltage-Dependent Anion Channel Protein in the Mitochondrial Membrane of Head and Neck Squamous Cell Carcinoma: Possible Role in Apoptosis. Zejia Yang, Lisa M. Schumaker, Merrill J. Egorin, Eleanor G. Zuhowski, Zhongmin Guo, and Kevin J. Cullen.....	5817
A Mass Balance and Disposition Study of the DNA Methyltransferase Inhibitor Zebularine (NSC 309132) and Three of Its Metabolites in Mice. Jan H. Beumer, Erin Joseph, Merrill J. Egorin, Robert S. Parker, David Z. D'argenio, Joseph M. Covey, and Julie L. Eiseman.....	5826
Vaccination with Viable Human Umbilical Vein Endothelial Cells Prevents Metastatic Tumors by Attack on Tumor Vasculature with Both Cellular and Humoral Immunity. Xin-Yuan Chen, Wei Zhang, Wang Zhang, Sheng Wu, Feng Bi, Yi-Jing Su, Xiang-Yang Tan, Jian-Ning Liu, and Jing Zhang.....	5834
Inhibition of Tumor Growth with Antiangiogenic Cancer Vaccine Using Epitope Peptides Derived from Human Vascular Endothelial Growth Factor Receptor 1. Hidenobu Ishizaki, Takuya Tsunoda, Satoshi Wada, Mai Yamauchi, Masabumi Shibuya, and Hideaki Tahara.....	5841
Multiparametric Flow Cytometric Analysis of Signal Transducer and Activator of Transcription 5 Phosphorylation in Immune Cell Subsets <i>In vitro</i> and following Interleukin-2 Immunotherapy. Kimberly A. Varker, Sri Vidya Kondadasula, Michael R. Go, Gregory B. Lesinski, Rupa Ghosh-Berkebile, Amy Lehman, J. Paul Monk, Thomas Olencki, Kari Kendra, and William E. Carson III	5850
Enhanced Antitumor Effect of Oncolytic Adenovirus Expressing Interleukin-12 and B7-1 in an Immunocompetent Murine Model. Young-Sook Lee, Joo-Hang Kim, Kyung-Ju Choi, Il-Kyu Choi, Hoguen Kim, Sungae Cho, Byoung Chul Cho, and Chae-Ok Yun	5859
Cotreatment with Vorinostat (Suberoylanilide Hydroxamic Acid) Enhances Activity of Dasatinib (BMS-354825) against Imatinib Mesylate-Sensitive or Imatinib Mesylate-Resistant Chronic Myelogenous Leukemia Cells. Warren Fiskus, Michael Pranpat, Maria Balasis, Purva Bali, Veronica Estrella, Sandhya Kumaraswamy, Rekha Rao, Kathy Rocha, Bryan Herger, Francis Lee, Victoria Richon, and Kapil Bhalla	5869
Sensitization by Dietary Docosahexaenoic Acid of Rat Mammary Carcinoma to Anthracycline: A Role for Tumor Vascularization. Séverine Colas, Karine Mahéo, Fabrice Denis, Caroline Goupille, Claude Hoinard, Pascal Champeroux, François Tranquart, and Philippe Bougnoux.....	5879
MLN120B, a Novel IκB Kinase β Inhibitor, Blocks Multiple Myeloma Cell Growth <i>In vitro</i> and <i>In vivo</i>. Teru Hideshima, Paola Neri, Pierfrancesco Tassone, Hiroshi Yasui, Kenji Ishitsuka, Noopur Raje, Dharminder Chauhan, Klaus Podar, Constantine Mitsiades, Lenny Dang, Nikhil Munshi, Paul Richardson, David Schenkein, and Kenneth C. Anderson.....	5887

Cancer Susceptibility and Prevention

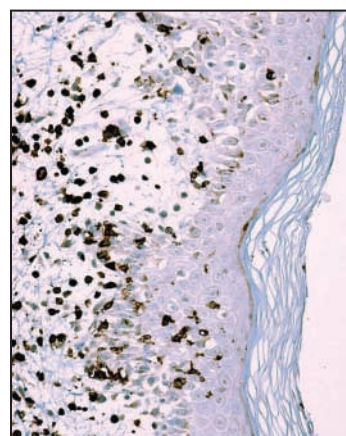
Vitamin D Inhibits the Formation of Prostatic Intraepithelial Neoplasia in *Nkx3.1*; *Pten* Mutant Mice. Whitney Banach-Petrosky, Xuesong Ouyang, Hui Gao, Kamyar Nader, Yan Ji, Nanjoo Suh, Robert S. DiPaola, and Cory Abate-Shen5895

The Combination of the Retinoid, LG100268, and a Selective Estrogen Receptor Modulator, Either Arzoxifene or Acolbifene, Synergizes in the Prevention and Treatment of Mammary Tumors in an Estrogen Receptor–Negative Model of Breast Cancer. Karen Liby, Mara Rendi, Nanjoo Suh, Darlene B. Royce, Renee Risingsong, Charlotte R. Williams, William Lamph, Fernand Labrie, Stan Krajewski, Xiaochun Xu, Heetae Kim, Powel Brown, and Michael B. Sporn5902

Isodeoxyelephantopin, a Novel Sesquiterpene Lactone, Potentiates Apoptosis, Inhibits Invasion, and Abolishes Osteoclastogenesis through Suppression of Nuclear Factor- κ B (NF- κ B) Activation and NF- κ B-Regulated Gene Expression. Haruyo Ichikawa, Mangalam S. Nair, Yasunari Takada, D.B. Alan Sheeja, M.A. Suresh Kumar, Oommen V. Oommen, and Bharat B. Aggarwal5910

About the Cover

Immunohistochemical staining of a rash biopsy derived from a metastatic melanoma patient 10 days after intralymphatic vaccination with melanoma tumor antigen-pulsed dendritic cells. Most of the study patients developed rashes in sun-exposed areas of skin following immunization. Rash biopsies were extensively infiltrated with CD3⁺ T lymphocytes (stained dark brown) that were also highly reactive against the immunizing tumor antigens. For further details, please see Grover *et al.* on page 5801 of this issue.



Clinical Cancer Research

12 (19)

Clin Cancer Res 2006;12:5605-5918.

Updated version Access the most recent version of this article at:
<http://clincancerres.aacrjournals.org/content/12/19>

E-mail alerts [Sign up to receive free email-alerts](#) related to this article or journal.

Reprints and Subscriptions To order reprints of this article or to subscribe to the journal, contact the AACR Publications Department at pubs@aacr.org.

Permissions To request permission to re-use all or part of this article, use this link <http://clincancerres.aacrjournals.org/content/12/19>. Click on "Request Permissions" which will take you to the Copyright Clearance Center's (CCC) Rightslink site.