

Editorial

- Effective Strategies for Tumors Affecting Chemopreventive Metabolism.**
 Commentary on Charles et al., p. 7492
 Jeroen T.M. Buters7203

The Biology Behind

- Circulating Methylated DNA: A New Generation of Tumor Markers.**
 Commentary on Wallner et al., p. 7347
 Martin Widschwendter and Usha Menon7205

CCR Practice of Translational Oncology

- Chips to Bedside: Incorporation of Microarray Data into Clinical Practice.**
 Lajos Pusztai7209

Molecular Pathways

- Targeting von Hippel-Lindau Pathway in Renal Cell Carcinoma.** Premal H. Patel,
 Rajendrakumar S.V. Chadalavada, R.S.K. Chaganti, and Robert J. Motzer7215

CCR Focus

- From the Editor.**
 Susan E. Bates7221

- Epidermal Growth Factor Receptor Activation: How Exon 19 and 21 Mutations Changed Our Understanding of the Pathway.** Rafael Rosell, Miquel Taron, Noemi Reguart, Dolores Isla, and Teresa Moran7222

- Update on Epidermal Growth Factor Receptor Mutations in Non-Small Cell Lung Cancer.** Gregory J. Riely, Katerina A. Politi, Vincent A. Miller, and William Pao7232

- Molecular Mechanisms of Epidermal Growth Factor Receptor (EGFR) Activation and Response to Gefitinib and Other EGFR-Targeting Drugs.** Mayumi Ono and Michihiko Kuwano7242

- Mechanisms of *egfr* Gene Transcription Modulation: Relationship to Cancer Risk and Therapy Response.** Burkhard Brandt, Sönke Meyer-Staeckling, Hartmut Schmidt, Konstantin Agelopoulos, and Horst Buerger7252

- Epidermal Growth Factor Receptor-Mediated Signal Transduction in the Development and Therapy of Gliomas.** M. Kelly Nicholas, Rimas V. Lukas, Nazia F. Jafri, Leonardo Faoro, and Ravi Salgia7261

Report from FDA

- Sorafenib for the Treatment of Advanced Renal Cell Carcinoma.** Robert C. Kane, Ann T. Farrell, Haleh Saber, Shenghui Tang, Gene Williams, Josephine M. Jee, Chengyi Liang, Brian Booth, Nallaperumal Chidambaram, David Morse, Rajeshwari Sridhara, Patricia Garvey, Robert Justice, and Richard Pazdur7271

Perspective

- Maspin: The New Frontier.** Zhila Khalkhali-Ellis7279

Human Cancer Biology

- Amplification and Overexpression of *CACNA1E* Correlates with Relapse in Favorable Histology Wilms' Tumors.** Rachael Natrajan, Suzanne E. Little, Jorge S. Reis-Filho, Lara Hing, Boo Messahel, Paul E. Grundy, Jeffrey S. Dome, Toni Schneider, Gordan M. Vujanic, Kathy Pritchard-Jones, and Chris Jones7284

β_2-Microglobulin Promotes the Growth of Human Renal Cell Carcinoma through the Activation of the Protein Kinase A, Cyclic AMP-Responsive Element-Binding Protein, and Vascular Endothelial Growth Factor Axis. Takeo Nomura, Wen-Chin Huang, Haiyen E. Zhou, Daqing Wu, Zhihui Xie, Hiromitsu Mimata, Majd Zayzafoon, Andrew N. Young, Fray F. Marshall, M. Neale Weitzmann, and Leland W.K. Chung.....	7294
Profiling of CD4⁺, CD8⁺, and CD4⁺CD25⁺CD45RO⁺FoxP3⁺ T Cells in Patients with Malignant Glioma Reveals Differential Expression of the Immunologic Transcriptome Compared with T Cells from Healthy Volunteers. Chris A. Learn, Peter E. Fecci, Robert J. Schmittling, Weihua Xie, Isaac Karikari, Duane A. Mitchell, Gary E. Archer, ZhengZheng Wei, Holly Dressman, and John H. Sampson	7306
The Coamplification Pattern of the MYCN Amplicon Is an Invariable Attribute of Most MYCN-Amplified Human Neuroblastomas. Axel Weber, Sven Starke, Eckhard Bergmann, and Holger Christiansen	7316

Imaging, Diagnosis, Prognosis

RNASEN Regulates Cell Proliferation and Affects Survival in Esophageal Cancer Patients. Nobuyoshi Sugito, Hideyuki Ishiguro, Yoshiyuki Kuwabara, Masahiro Kimura, Akira Mitsui, Hiroki Kurehara, Takuya Ando, Ryota Mori, Nobuhiro Takashima, Ryo Ogawa, and Yoshitaka Fujii	7322
Aberrant Promoter Methylation Profile and Association with Survival in Patients with Non-Small Cell Lung Cancer. Jian Gu, David Berman, Charles Lu, Ignacio I. Wistuba, Jack A. Roth, Marsha Frazier, Margaret R. Spitz, and Xifeng Wu.....	7329
Vascular Cell Adhesion Molecule 1 Predicts Cancer-Free Survival in Clear Cell Renal Carcinoma Patients. Ko-ichi Shioi, Atsushi Komiya, Keiko Hattori, Ying Huang, Futoshi Sano, Takayuki Murakami, Noboru Nakaigawa, Takeshi Kishida, Yoshinobu Kubota, Yoji Nagashima, and Masahiro Yao	7339
Methylation of Serum DNA Is an Independent Prognostic Marker in Colorectal Cancer. Maike Wallner, Andreas Herbst, Andrea Behrens, Alexander Crispin, Petra Stieber, Burkhard Göke, Rolf Lamerz, and Frank T. Kolligs	7347
Implications of Methylation Patterns of Cancer Genes in Salivary Gland Tumors. Michelle D. Williams, Nitin Chakravarti, Merrill S. Kies, Shin-Ichiro Maruya, Jeffrey N. Myers, Joie C. Haviland, Randal S. Weber, Reuben Lotan, and Adel K. El-Naggar	7353
Molecular Profiling of ADAM12 in Human Bladder Cancer. Camilla Fröhlich, Reidar Albrechtsen, Lars Dyrskjöt, Lise Rudkjær, Torben F. Ørntoft, and Ulla M. Wewer	7359
Ki-67 Is an Independent Predictor of Bladder Cancer Outcome in Patients Treated with Radical Cystectomy for Organ-Confined Disease. Vitaly Margulis, Shahrokh F. Shariat, Raheela Ashfaq, Arthur I. Sagalowsky, and Yair Lotan	7369

Cancer Therapy: Clinical

Contribution of ABL Kinase Domain Mutations to Imatinib Resistance in Different Subsets of Philadelphia-Positive Patients: By the GIMEMA Working Party on Chronic Myeloid Leukemia. Simona Soverini, Sabrina Colarossi, Alessandra Gnani, Gianantonio Rosti, Fausto Castagnetti, Angela Poerio, Ilaria Iacobucci, Marilina Amabile, Elisabetta Abruzzese, Ester Orlandi, Franca Radaelli, Fabrizio Ciccone, Mario Tiribelli, Roberto di Lorenzo, Clementina Caracciolo, Barbara Izzo, Fabrizio Pane, Giuseppe Saglio, Michele Baccarani, and Giovanni Martinelli on behalf of the GIMEMA Working Party on Chronic Myeloid Leukemia	7374
---	------

Immunologic and Clinical Effects of Injecting Mature Peptide-Loaded Dendritic Cells by Intralymphatic and Intranodal Routes in Metastatic Melanoma Patients. Thierry Lesimple, Eve-Marie Neidhard, Virginie Vignard, Claudia Lefevre, Henri Adamski, Nathalie Labarriere, André Carsin, Delphine Monnier, Brigitte Collet, Gilles Clapisson, Brigitte Birebent, Irène Philip, Louis Toujas, Mohamed Chokri, and Véronique Quillien.....	7380
A Neoadjuvant/Adjuvant Randomized Trial of Colorectal Cancer Patients Vaccinated with an Anti-Idiotypic Antibody, 105AD7, Mimicking CD55. Gustav J. Ullenhag, Ian Spendlove, Nicholas F.S. Watson, Adrian A. Indar, Mukul Dube, Richard A. Robins, Charles Maxwell-Armstrong, John H. Scholefield, and Lindy G. Durrant	7389
HER2-Specific T-Cell Immune Responses in Patients Vaccinated with Truncated HER2 Protein Complexed with Nanogels of Cholesteryl Pullulan. Shigehisa Kitano, Shinichi Kageyama, Yasuhiro Nagata, Yoshihiro Miyahara, Atsunori Hiasa, Hiroaki Naota, Satoshi Okumura, Hiroshi Imai, Taizo Shiraiishi, Masahiro Masuya, Masakatsu Nishikawa, Junzo Sunamoto, Kazunari Akiyoshi, Takashi Kanematsu, Andrew M. Scott, Roger Murphy, Eric W. Hoffman, Lloyd J. Old, and Hiroshi Shiku	7397
Phase I, Pharmacokinetic, and Biological Study of Erlotinib in Combination with Paclitaxel and Carboplatin in Patients with Advanced Solid Tumors. Amita Patnaik, Debra Wood, Anthony W. Tolcher, Marta Hamilton, Jeffrey I. Kreisberg, Lisa A. Hammond, Garry Schwartz, Muralidhar Beeram, Manuel Hidalgo, Monica M. Mita, Julie Wolf, Paul Nadler, and Eric K. Rowinsky.....	7406
Rapid Androgen Cycling as Treatment for Patients with Prostate Cancer. David Feltquate, Luke Nordquist, Caitlin Eicher, Michael Morris, Oren Smaletz, Susan Slovin, Tracy Curley, Andrew Wilton, Martin Fleisher, Glenn Heller, and Howard I. Scher	7414

Cancer Therapy: Preclinical

Active Antiviral T-Lymphocyte Response Can Be Redirected against Tumor Cells by Antitumor Antibody × MHC/Viral Peptide Conjugates. Valérie Cesson, Kathrin Stirnemann, Bruno Robert, Immanuel Luescher, Thomas Filleron, Giampietro Corradin, Jean-Pierre Mach, and Alena Donda.....	7422
Inhibitory Effects of Castration in an Orthotopic Model of Androgen-Independent Prostate Cancer Can Be Mimicked and Enhanced by Angiogenesis Inhibition. Peter Hammarsten, Sofia Halin, Pernilla Wikstöm, Roger Henriksson, Stina Häggström Rudolfsson, and Anders Bergh	7431
Systemic Anthrax Lethal Toxin Therapy Produces Regressions of Subcutaneous Human Melanoma Tumors in Athymic Nude Mice. Ralph J. Abi-Habib, Ravibhushan Singh, Stephen H. Leppla, John J. Greene, Yan Ding, Bree Berghuis, Nicholas S. Duesbery, and Arthur E. Frankel.....	7437
Preclinical Evaluation of Antiangiogenic Thrombospondin-1 Peptide Mimetics, ABT-526 and ABT-510, in Companion Dogs with Naturally Occurring Cancers. Anthony Rusk, Evelyn McKeegan, Fortuna Haviv, Sandra Majest, Jack Henkin, and Chand Khanna	7444
Cooperative Activity of Cytotoxic Chemotherapy with Antiangiogenic Thrombospondin-I Peptides, ABT-526, in Pet Dogs with Relapsed Lymphoma. Anthony Rusk, Elizabeth Cozzi, Marty Stebbins, David Vail, Joanne Graham, Victor Valli, Jack Henkin, Rick Sharpee, and Chand Khanna	7456
Enhancement of Immunologic Tumor Regression by Intratumoral Administration of Dendritic Cells in Combination with Cryoablative Tumor Pretreatment and Bacillus Calmette-Guerin Cell Wall Skeleton Stimulation. Masaru Udagawa, Chie Kudo-Saito, Go Hasegawa, Kazuhito Yano, Aiko Yamamoto, Masae Yaguchi, Masahiro Toda, Ichiro Azuma, Takehisa Iwai, and Yutaka Kawakami.....	7465

Identification of a Highly Immunogenic HLA-A*01-Binding T Cell Epitope of WT1.

Anne Marie Asemussen, Ulrich Keilholz, Stefan Tenzer, Margret Müller, Steffen Walter, Stefan Stevanovic, Hansjörg Schild, Anne Letsch, Eckhard Thiel, Hans-Georg Rammensee, and Carmen Scheibenbogen7476

Pharmacokinetics, Metabolism, and Oral Bioavailability of the DNA Methyltransferase

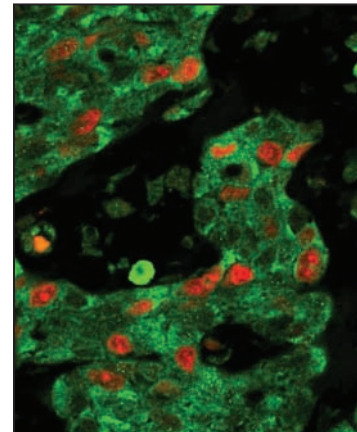
Inhibitor 5-Fluoro-2'-Deoxycytidine in Mice. Jan H. Beumer, Julie L. Eiseman, Robert A. Parise, Erin Joseph, Julianne L. Holleran, Joseph M. Covey, and Merrill J. Egorin7483

Transcriptional Repression of Hepatic *Cytochrome P450 3A4* Gene in the Presence of Cancer.

Kellie A. Charles, Laurent P. Rivory, Sandie L. Brown, Christopher Liddle, Stephen J. Clarke, and Graham R. Robertson.....7492

About the Cover

Anti-Ki67 (red) and anti-RNASEN (green) double staining of esophageal cancer tissue. RNASEN is expressed mainly in the cytoplasm of most of the esophageal cancer cells including the Ki67 positive proliferating cells. Cancers with high RNASEN expression had poor prognosis. Please see Sugito et al. on page 7322 in this issue.



Clinical Cancer Research will no longer print author and subject indexes for each yearly volume. The majority of our readers report that they now use online search capabilities to find articles (<http://clincancerres.aacrjournals.org/>).

Clinical Cancer Research

12 (24)

Clin Cancer Res 2006;12:7203-7497.

Updated version Access the most recent version of this article at:
<http://clincancerres.aacrjournals.org/content/12/24>

E-mail alerts [Sign up to receive free email-alerts](#) related to this article or journal.

Reprints and Subscriptions To order reprints of this article or to subscribe to the journal, contact the AACR Publications Department at pubs@aacr.org.

Permissions To request permission to re-use all or part of this article, use this link <http://clincancerres.aacrjournals.org/content/12/24>. Click on "Request Permissions" which will take you to the Copyright Clearance Center's (CCC) Rightslink site.