

Editorials

- Survival of Patients with Clinical Stage I Lung Cancer Diagnosed by Computed Tomography Screening for Lung Cancer.**
Claudia I. Henschke for the International Early Lung Cancer Action Program Investigators.....4949
- CT Screening for Lung Cancer: Are We Ready for Wide-Scale Application?** Joseph Aisner.....4951
- Epidermal Growth Factor Receptor Mutation Testing in Lung Cancer: Searching for the Ideal Method.**
 Commentary on Hoshi et al., p. 4974
William Pao and Marc Ladanyi.....4954

The Biology Behind

- Inhibitor- κ B Kinase in Tumor Promotion and Suppression During Progression of Squamous Cell Carcinoma.**
 Commentary on Maeda et al., p. 5041
Carter Van Waes, Ming Yu, Liesl Nottingham, and Michael Karin.....4956

Molecular Pathways

- Targeting the Limitless Replicative Potential of Cancer: The Telomerase/Telomere Pathway.**
Lloyd Kelland4960

Human Cancer Biology

- Dissecting the Akt/Mammalian Target of Rapamycin Signaling Network: Emerging Results from the Head and Neck Cancer Tissue Array Initiative.** Alfredo A. Molinolo, Stephen M. Hewitt, Panomwat Amornphimoltham, Somboon Keelawat, Samraeung Rangdaeng, Abelardo Meneses García, Ana R. Raimondi, Rafael Jufe, María Itoiz, Yan Gao, Dhananjaya Saranath, George S. Kaleebi, George H. Yoo, Lee Leak, Ernest M. Myers, Satoru Shintani, David Wong, H. Davis Massey, W. Andrew Yeudall, Fulvio Lonardo, John Ensley, and J. Silvio Gutkind.....4964
- Rapid Detection of Epidermal Growth Factor Receptor Mutations in Lung Cancer by the SMart-Amplification Process.** Kanako Hoshi, Hideki Takakura, Yasumasa Mitani, Kenji Tatsumi, Nobuyoshi Momiyama, Yasushi Ichikawa, Shinji Togo, Toru Miyagi, Yuki Kawai, Yasushi Kogo, Takeshi Kikuchi, Chiaki Kato, Takahiro Arakawa, Syuji Uno, Paul E. Cizdziel, Alexander Lezhava, Noburo Ogawa, Yoshihide Hayashizaki, and Hiroshi Shimada4974
- Is There a Human Homologue to the Murine Proteolysis-Inducing Factor?** Barbara M. Wieland, Grant D. Stewart, Richard J.E. Skipworth, Kathryn Sangster, Kenneth C.H. Fearon, James A. Ross, Tony J. Reiman, Jay Easaw, Marina Mourtzakis, Vishesh Kumar, Brian J. Pak, Kathryn Calder, Gerasimos Filippatos, Dimitris T. Kremastinos, Monica Palcic, and Vickie E. Baracos.....4984
- A New Diagnostic Marker for Secreted Epstein-Barr Virus-Encoded LMP1 and BARF1 Oncoproteins in the Serum and Saliva of Patients with Nasopharyngeal Carcinoma.** Karim Houali, Xiaohui Wang, Yuko Shimizu, Djamel Djennaoui, John Nicholls, Sylvie Fiorini, Abdelmadjid Bouguerrouh, and Tadamasu Ooka4993
- Isolation and Molecular Profiling of Bone Marrow Micrometastases Identifies TWIST1 as a Marker of Early Tumor Relapse in Breast Cancer Patients.** Mark A. Watson, Lourdes R. Ylagan, Kathryn M. Trinkaus, William E. Gillanders, Michael J. Naughton, Katherine N. Weilbaecher, Timothy P. Fleming, and Rebecca L. Aft.....5001
- Melanoma Cells Exhibit Variable Signal Transducer and Activator of Transcription 1 Phosphorylation and a Reduced Response to IFN- α Compared with Immune Effector Cells.** Gregory B. Lesinski, John Trefry, Melanie Brasdovich, Sri Vidya Kondadasula, Korkor Sackey, Jason M. Zimmerer, Abhik Ray Chaudhury, Lianbo Yu, Xiaoli Zhang, Tim R. Crespin, Michael J. Walker, and William E. Carson III5010

Monocyte Chemotactic Protein-1 Secreted by Primary Breast Tumors Stimulates Migration of Mesenchymal Stem Cells. R.M. Dwyer, S.M. Potter-Beirne, K.A. Harrington, A.J. Lowery, E. Hennessy, J.M. Murphy, F.P. Barry, T. O'Brien, and M.J. Kerin	5020
Deletion of a Small Consensus Region at 6q15, Including the <i>MAP3K7</i> Gene, Is Significantly Associated with High-Grade Prostate Cancers. Wennuan Liu, Bao-Li Chang, Scott Cramer, Patrick P. Koty, Tao Li, Jishan Sun, Aubrey R. Turner, Chris Von Kap-Herr, Peggy Bobby, Jianyu Rao, S. Lilly Zheng, William B. Isaacs, and Jianfeng Xu.....	5028
Cyclooxygenase-2 and Platelet-Derived Growth Factor Receptors as Potential Targets in Treating Aggressive Fibromatosis. Stefano Signoroni, Milo Frattini, Tiziana Negri, Elisa Pastore, Elena Tamborini, Paola Casieri, Marta Orsenigo, Luca Da Riva, Paolo Radice, Paola Sala, Alessandro Gronchi, Lucio Bertario, Marco A. Pierotti, and Silvana Pilotti.....	5034

Imaging, Diagnosis, Prognosis

Epigenetic Inactivation of $\text{I}\kappa\text{B}$ Kinase-α in Oral Carcinomas and Tumor Progression. Genta Maeda, Tadashige Chiba, Shuichi Kawashiri, Tazuko Satoh, and Kazushi Imai.....	5041
Inactivation of <i>HOXA</i> Genes by Hypermethylation in Myeloid and Lymphoid Malignancy is Frequent and Associated with Poor Prognosis. Gordon Strathdee, Tessa L. Holyoake, Alyson Sim, Anton Parker, David G. Oscier, Junia V. Melo, Stefan Meyer, Tim Eden, Anne M. Dickinson, Joanne C. Mountford, Heather G. Jorgensen, Richard Soutar, and Robert Brown	5048
<i>CXCL12</i> G801A Polymorphism Is a Risk Factor for Sporadic Prostate Cancer Susceptibility. Hiroshi Hirata, Yuji Hinoda, Nobuyuki Kikuno, Ken Kawamoto, Angela V. Dahiya, Yutaka Suehiro, Yuichiro Tanaka, and Rajvir Dahiya.....	5056
Long-term Evaluation of Three Multiple-Case Waldenström Macroglobulinemia Families. Mary L. McMaster, Gyorgy Csako, Therese R. Giambarresi, Linda Vasquez, Melissa Berg, Stephanie Saddlemire, Benjamin Hulley, and Margaret A. Tucker.....	5063
Overexpression of <i>FLIP₁</i> Is an Independent Marker of Poor Prognosis in Colorectal Cancer Patients. Gustave J. Ullenhag, Abhik Mukherjee, Nicholas F.S. Watson, Ahmad H. Al-Attar, John H. Scholefield, and Lindy G. Durrant.....	5070
Clinical Significance of Serum Mesothelin in Patients with Mesothelioma and Lung Cancer. Alfonso Cristaudo, Rudy Foddis, Agnese Vivaldi, Giovanni Guglielmi, Nicola Dipalma, Rosangela Filiberti, Monica Neri, Marcello Ceppi, Michela Paganuzzi, Gian Paolo Ivaldi, Manlio Mencoboni, Pier Aldo Canessa, Nicolino Ambrosino, Antonio Chella, Luciano Mutti, and Riccardo Puntoni	5076
Classification Based on the Combination of Molecular and Pathologic Predictors is Superior to Molecular Classification on Prognosis in Colorectal Carcinoma. Fangying Xu, Fenjuan Wang, Meijuan Di, Qiong Huang, Min Wang, Hu Hu, Yisen Jin, Jiankang Dong, and Maode Lai	5082
Association Between Hypermethylated Tumor and Paired Surgical Margins in Head and Neck Squamous Cell Carcinomas. Tiziana Martone, Anna Gillio-Tos, Laura De Marco, Valentina Fiano, Milena Maule, Andrea Cavalot, Massimiliano Garzaro, Franco Merletti, and Giorgio Cortesina	5089
Methylation of Tumor-Related Genes in Neoadjuvant-Treated Gastric Cancer: Relation to Therapy Response and Clinicopathologic and Molecular Features. Rudolf Napieralski, Katja Ott, Markus Kremer, Karen Becker, Anne-Laure Boulesteix, Florian Lordick, Jörg Rüdiger Siewert, Heinz Höfler, and Gisela Keller	5095
Detection of <i>TMPRSS2-ERG</i> Fusion Transcripts and Prostate Cancer Antigen 3 in Urinary Sediments May Improve Diagnosis of Prostate Cancer. Daphne Hessels, Frank P. Smit, Gerald W. Verhaegh, J. Alfred Witjes, Erik B. Cornel, and Jack A. Schalken.....	5103
Overexpression of Apollon, an Antiapoptotic Protein, Is Associated with Poor Prognosis in Childhood <i>De novo</i> Acute Myeloid Leukemia. Ki Woong Sung, Jaewon Choi, Yu Kyeong Hwang, Sang Jin Lee, Hee-Jin Kim, Soo Hyun Lee, Keon HeeYoo, Hye Lim Jung, and Hong Hoe Koo.....	5109

Significance of HER2 Low-Level Copy Gain in Barrett's Cancer: Implications for Fluorescence *In situ* Hybridization Testing in Tissues. Sandra Rauser, Roland Weis, Herbert Braselmann, Marcus Feith, Hubert J. Stein, Rupert Langer, Peter Hutzler, Michael Hausmann, Silke Lassmann, Jörg Rüdiger Siewert, Heinz Höfler, Martin Werner, and Axel Walch5115

Age-Related EBV-Associated B-Cell Lymphoproliferative Disorders Constitute a Distinct Clinicopathologic Group: A Study of 96 Patients. Takashi Oyama, Kazuhito Yamamoto, Naoko Asano, Aya Oshiro, Ritsuro Suzuki, Yoshitoyo Kagami, Yasuo Morishima, Kengo Takeuchi, Toshiyuki Izumo, Shigeo Mori, Koichi Ohshima, Junji Suzumiya, Naoya Nakamura, Masafumi Abe, Koichi Ichimura, Yumiko Sato, Tadashi Yoshino, Tomoki Naoe, Yoshie Shimoyama, Yoshikazu Kamiya, Tomohiro Kinoshita, and Shigeo Nakamura5124

Cancer Therapy: Clinical

Augmented HER-2-Specific Immunity during Treatment with Trastuzumab and Chemotherapy. Clare Taylor, Dawn Hershman, Nina Shah, Nicole Suciu-Foca, Dan P. Petrylak, Robert Taub, Linda Vahdat, Bin Cheng, Mark Pegram, Keith L. Knutson, and Raphael Clynes5133

Phase I Study of SS1P, a Recombinant Anti-Mesothelin Immunotoxin Given as a Bolus I.V. Infusion to Patients with Mesothelin-Expressing Mesothelioma, Ovarian, and Pancreatic Cancers. Raffit Hassan, Susie Bullock, Ahalya Premkumar, Robert J. Kreitman, Hedy Kindler, Mark C. Willingham, and Ira Pastan5144

Prospective Assessment of Discontinuation and Reinitiation of Erlotinib or Gefitinib in Patients with Acquired Resistance to Erlotinib or Gefitinib Followed by the Addition of Everolimus. Gregory J. Riely, Mark G. Kris, Binsheng Zhao, Tim Akhurst, Daniel T. Milton, Erin Moore, Leslie Tyson, William Pao, Naiyer A. Rizvi, Lawrence H. Schwartz, and Vincent A. Miller5150

Cancer Therapy: Preclinical

Inherited Variation in Hormone-Regulating Genes and Prostate Cancer Survival. Sara Lindström, Hans-Olov Adami, Katarina Augustsson Bälter, Jianfeng Xu, S. Lilly Zheng, Pär Stattin, Henrik Grönberg, and Fredrik Wiklund5156

Resveratrol Inhibits Tumor Growth of Human Neuroblastoma and Mediates Apoptosis by Directly Targeting Mitochondria. Paul R. van Ginkel, Dhruv Sareen, Lalita Subramanian, Quintisha Walker, Soesiwati R. Darjatmoko, Mary J. Lindstrom, Amol Kulkarni, Daniel M. Albert, and Arthur S. Polans5162

The Intestinotrophic Peptide, GLP-2, Counteracts Intestinal Atrophy in Mice Induced by the Epidermal Growth Factor Receptor Inhibitor, Gefitinib. Kristine Juul Hare, Bolette Hartmann, Hannelouise Kissow, Jens Juul Holst, and Steen Seier Poulsen5170

Chemoprevention of Carcinogenic Progression to Esophageal Adenocarcinoma by the Manganese Superoxide Dismutase Supplementation. Robert C.G. Martin, Qiaohong Liu, John M. Wo, Mukunda B. Ray, and Yan Li5176

Nelfinavir, A Lead HIV Protease Inhibitor, Is a Broad-Spectrum, Anticancer Agent that Induces Endoplasmic Reticulum Stress, Autophagy, and Apoptosis *In vitro* and *In vivo*. Joell J. Gills, Jaclyn LoPiccolo, Junji Tsurutani, Robert H. Shoemaker, Carolyn J.M. Best, Mones S. Abu-Asab, Jennifer Borojerdi, Noel A. Warfel, Erin R. Gardner, Matthew Danish, M. Christine Hollander, Shigeru Kawabata, Maria Tsokos, William D. Figg, Patricia S. Steeg, and Phillip A. Dennis5183

Enhanced Survival and Cure of F98 Glioma-Bearing Rats following Intracerebral Delivery of Carboplatin in Combination with Photon Irradiation. Julia Rousseau, Caroline Boudou, Rolf F. Barth, Jacques Balosso, François Estève, and Hélène Elleaume5195

Targeting Lymphotoxin β Receptor with Tumor-Specific T Lymphocytes for Tumor Regression. Dafeng Yang, Najam ud Din, Darren D. Browning, Scott I. Abrams, and Kebin Liu5202

Radiation-Enhanced Vascular Targeting of Human Lung Cancers in Mice with a Monoclonal Antibody That Binds Anionic Phospholipids. Jin He, Troy A. Luster, and Philip E. Thorpe5211

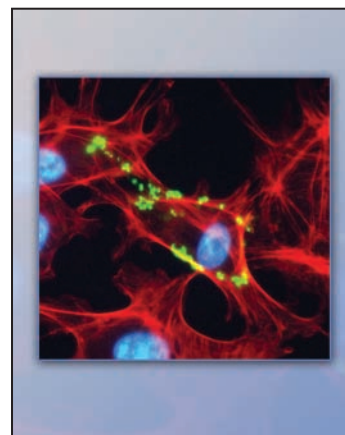
Decitabine Up-regulates S100A2 Expression and Synergizes with IFN-γ to Kill Uveal Melanoma Cells. Jared A. Gollob and Catherine J. Sciambi	5219
---------------------------------------------------------------------------------------------------------------------------------------------------------------------------	-------------

Corrections

Article on Use of Single-Dose Intrapleural IFN-β gene Transfer for Malignant Pleural Mesothelioma and Metastatic Pleural Effusions	5226
Article on Peptide Epitopes from the Wilms' Tumor 1 Oncoprotein	5226

About the Cover

Irradiation of endothelial cells *in vitro* induces the surface exposure of anionic phospholipids, principally phosphatidylserine (shown in green in the figure). Irradiation of human lung tumors in mice likewise induces exposure of phosphatidylserine on tumor vascular endothelium. Targeting the exposed phosphatidylserine with a monoclonal antibody (2aG4) leads to host-cell mediated destruction of tumor vessels and reductions in tumor growth in the mice. Bavituximab, a chimeric version of 2aG4 in clinical trials, has the potential to improve the efficacy of radiation therapy in cancer patients by amplifying damage to tumor vasculature. For details, see the article by He and associates on page 5211 of this issue.



Clinical Cancer Research

13 (17)

Clin Cancer Res 2007;13:4949-5226.

Updated version Access the most recent version of this article at:
<http://clincancerres.aacrjournals.org/content/13/17>

E-mail alerts [Sign up to receive free email-alerts](#) related to this article or journal.

Reprints and Subscriptions To order reprints of this article or to subscribe to the journal, contact the AACR Publications Department at pubs@aacr.org.

Permissions To request permission to re-use all or part of this article, use this link <http://clincancerres.aacrjournals.org/content/13/17>. Click on "Request Permissions" which will take you to the Copyright Clearance Center's (CCC) Rightslink site.