

**The Biology Behind**

**Rexinoids and Breast Cancer Prevention.**

□□ *Commentary on Li et al., p. 6224*

Louise R. Howe .....5983

**The Clinical Connection**

**Phosphatidylinositol 3-Kinase in Breast Cancer: Where from Here?** Paradiso Angelo,

□□ *Commentary on Barbareschi et al., p. 6064*

Mangia Anita, Azzariti Amalia, and Tommasi Stefania .....5988

**Molecular Pathways**

**The Universal Character of the Tumor-Associated Antigen Survivin.** Mads Hald Andersen,

Inge Marie Svane, Jürgen C. Becker, and Per thor Straten .....5991

**The Inhibitor of Apoptosis Proteins as Therapeutic Targets in Cancer.** Domagoj Vucic

and Wayne J. Fairbrother .....5995

**Human Cancer Biology**

**De novo Identification of MIZ-1 (ZBTB17) Encoding a MYC-Interacting Zinc-Finger Protein as a New Favorable Neuroblastoma Gene.** Naohiko Ikegaki, Takahiro Gotoh, Bing Kung,

Justin S. Riceberg, David Y. Kim, Huaqing Zhao, Eric F. Rappaport, Sakeenah L. Hicks,

Robert C. Seeger, and Xiao X. Tang .....6001

**Canonical Nuclear Factor  $\kappa$ B Pathway Inhibition Blocks Myeloma Cell Growth and Induces Apoptosis in Strong Synergy with TRAIL.** Mathilde Romagnoli, Grégoire Desplanques,

Sophie Maïga, Steven Legouill, Michel Dreano, Régis Bataille, and Sophie Barillé-Nion .....6010

**Genome-Wide Allelotypes of Familial Pancreatic Adenocarcinomas and Familial and Sporadic Intraductal Papillary Mucinous Neoplasms.** Tadayoshi Abe, Noriyoshi Fukushima, Kieran Brune,

Corinne Boehm, Norihiro Sato, Hiroyuki Matsubayashi, Marcia Canto, Gloria M. Petersen,

Ralph H. Hruban, and Michael Goggins .....6019

**Hyperdiploidy Is a Common Finding in Monoclonal Gammopathy of Undetermined**

**Significance and Monosomy 13 Is Restricted to These Hyperdiploid Patients.** Maud Brousseau,

Xavier Leleu, Jérémie Gerard, Thomas Gastinne, Alban Godon, Franck Genevieve, Mamoun Dib,

Jean-Luc Lai, Thierry Facon, and Marc Zandecki for the Intergroupe Francophone du Myélome .....6026

**The Double-Stranded RNA-Activated Protein Kinase Mediates Radiation Resistance in Mouse Embryo Fibroblasts through Nuclear Factor  $\kappa$ B and Akt Activation.** Urs von Holzen,

Abujiang Pataer, Uma Raju, Dora Bocangel, Stephan A. Vorbürger, Yanna Liu, Xiaolin Lu,

Jack A. Roth, Bharat B. Aggarwal, Glen N. Barber, Khandan Keyomarsi, Kelly K. Hunt,

and Stephen G. Swisher .....6032

**PrLZ Is Expressed in Normal Prostate Development and in Human Prostate Cancer**

**Progression.** Ruoxiang Wang, Jianchun Xu, Nicola Mabeesh, Guodong Zhu, Jianguang Zhou,

Mahul Amin, Dalin He, Fray F. Marshall, Haiyen E. Zhau, and Leland W.K. Chung .....6040

**Identification of a Met-Binding Peptide from a Phage Display Library.** Ping Zhao,

Tessa Grabinski, Chongfeng Gao, R. Scot Skinner, Troy Giambernardi, Yanli Su, Eric Hudson,

James Resau, Milton Gross, George F. Vande Woude, Rick Hay, and Brian Cao .....6049

**Imaging, Diagnosis, Prognosis**

**Expression of X-Linked Inhibitor of Apoptosis Protein Is a Strong Predictor of Human Prostate Cancer Recurrence.** David B. Seligson, Fumiya Hongo, Sara Huerta-Yepez,

Yoichi Mizutani, Tsuneharu Miki, Hong Yu, Steve Horvath, David Chia, Lee Goodglick,

and Benjamin Bonavida .....6056

<b>Different Prognostic Roles of Mutations in the Helical and Kinase Domains of the <i>PIK3CA</i> Gene in Breast Carcinomas.</b> Mattia Barbareschi, Fiamma Buttitta, Lara Felicioni, Sabrina Cotrupi, Fabio Barassi, Maela Del Grammastro, Antonella Ferro, Paolo Dalla Palma, Enzo Galligioni, and Antonio Marchetti.....	6064
<b>Evaluation of an <sup>111</sup>In-Radiolabeled Peptide as a Targeting and Imaging Agent for ErbB-2 Receptor–Expressing Breast Carcinomas.</b> Senthil R. Kumar, Thomas P. Quinn, and Susan L. Deutscher .....	6070
<b>Pharmacogenomic Predictor Discovery in Phase II Clinical Trials for Breast Cancer.</b> Lajos Pusztai, Keith Anderson, and Kenneth R. Hess.....	6080
<b>Synchronous Alterations of Wnt and Epidermal Growth Factor Receptor Signaling Pathways through Aberrant Methylation and Mutation in Non–Small Cell Lung Cancer.</b> Makoto Suzuki, Hisayuki Shigematsu, Takahiro Nakajima, Rieko Kubo, Shinichiro Motohashi, Yasuo Sekine, Kiyoshi Shibuya, Toshihiko Iizasa, Kenzo Hiroshima, Yukio Nakatani, Adi F. Gazdar, and Takehiko Fujisawa.....	6087
<b>Association between DNA Methylation and Shortened Survival in Patients with Advanced Colorectal Cancer Treated with 5-Fluorouracil–Based Chemotherapy.</b> Lanlan Shen, Paul J. Catalano, Al B. Benson III, Peter O’Dwyer, Stanley R. Hamilton, and Jean-Pierre J. Issa .....	6093
<b>p53 Mutations in Deep Tissues Are More Strongly Associated with Recurrence than Mutation-Positive Mucosal Margins.</b> Xiaohong Huang, Stelios Pateromichelakis, Allison Hills, Martyn Sherriff, Andrew Lyons, John Langdon, Edward Odell, Peter Morgan, John Harrison, and Max Partridge.....	6099
<b>High Levels of B-Cell Activating Factor in Patients with Active Chronic Graft-Versus-Host Disease.</b> Stefanie Sarantopoulos, Kristen E. Stevenson, Haesook T. Kim, Nazmim S. Bhuiya, Corey S. Cutler, Robert J. Soiffer, Joseph H. Antin, and Jerome Ritz.....	6107
<b>Wwox and Ap2<math>\gamma</math> Expression Levels Predict Tamoxifen Response.</b> Gulnur Guler, Dimitrios Iliopoulos, Nilufer Guler, Cigdem Himmetoglu, Mutlu Hayran, and Kay Huebner.....	6115
<b>High Promoter Methylation Levels of APC Predict Poor Prognosis in Sextant Biopsies from Prostate Cancer Patients.</b> Rui Henrique, Franclim R. Ribeiro, Daniel Fonseca, Mohammad O. Hoque, André L. Carvalho, Vera L. Costa, Mafalda Pinto, Jorge Oliveira, Manuel R. Teixeira, David Sidransky, and Carmen Jerónimo .....	6122
<b>Enhancing Fraction Predicts Clinical Outcome following First-Line Chemotherapy in Patients with Epithelial Ovarian Carcinoma.</b> James P.B. O’Connor, Gordon C. Jayson, Alan Jackson, Dana Ghiorghiu, Bernadette M. Carrington, Chris J. Rose, Samantha J. Mills, Ric Swindell, Caleb Roberts, Claire L. Mitchell, and Geoffrey J.M. Parker .....	6130
<b>A Half-Log Increase in BCR-ABL RNA Predicts a Higher Risk of Relapse in Patients with Chronic Myeloid Leukemia with an Imatinib-Induced Complete Cytogenetic Response.</b> Richard D. Press, Chad Galderisi, Rui Yang, Carole Rempfer, Stephanie G. Willis, Michael J. Mauro, Brian J. Druker, and Michael W.N. Deininger.....	6136
<b>Magnetic Resonance Imaging of the Breast Improves Detection of Invasive Cancer, Preinvasive Cancer, and Premalignant Lesions during Surveillance of Women at High Risk for Breast Cancer.</b> Christopher C. Riedl, Lothar Pohnhold, Daniel Flöry, Michael Weber, Regina Kroiss, Teresa Wagner, Michael Fuchsjäger, and Thomas H. Helbich .....	6144
<b>DNA Replication Licensing Factors and Aurora Kinases are Linked to Aneuploidy and Clinical Outcome in Epithelial Ovarian Carcinoma.</b> Anjana A. Kulkarni, Marco Loddo, Elisabetta Leo, Mohammed Rashid, Kathryn L. Eward, Thomas R. Fanshawe, Jessica Butcher, Alison Frost, Jonathan A. Ledermann, Gareth H. Williams, and Kai Stoeber.....	6153

## Cancer Therapy: Clinical

<b>Novel Therapy with 2-Methoxyestradiol for the Treatment of Relapsed and Plateau Phase Multiple Myeloma.</b> S. Vincent Rajkumar, Paul G. Richardson, Martha Q. Lacy, Angela Dispenzieri, Philip R. Greipp, Thomas E. Witzig, Robert Schlossman, Carolyn F. Sidor, Kenneth C. Anderson, and Morie A. Gertz.....	6162
---	------

<b>Phase I Trial of Toll-Like Receptor 9 Agonist PF-3512676 with and Following Rituximab in Patients with Recurrent Indolent and Aggressive Non-Hodgkin's Lymphoma.</b> John P. Leonard, Brian K. Link, Christos Emmanouilides, Stephanie A. Gregory, Daniel Weisdorf, Jeffrey Andrey, John Hainsworth, Joseph A. Sparano, Donald E. Tsai, Sandra Horning, Arthur M. Krieg, and George J. Weiner .....	6168
<b>Efficacy and Safety of Single-Agent Pertuzumab, a Human Epidermal Receptor Dimerization Inhibitor, in Patients with Non-Small Cell Lung Cancer.</b> Roy S. Herbst, Angela M. Davies, Ronald B. Natale, Thao P. Dang, Joan H. Schiller, Linda L. Garland, Vincent A. Miller, David Mendelson, Annick D. Van den Abbeele, Yulia Melenevsky, Daniel J. de Vries, David A. Eberhard, Benjamin Lyons, Stuart G. Lutzker, and Bruce E. Johnson .....	6175
<b>A Phase I and Pharmacologic Study of Belotecan in Combination with Cisplatin in Patients with Previously Untreated Extensive-Stage Disease Small Cell Lung Cancer.</b> Dae Ho Lee, Sang-We Kim, Kyun-Seop Bae, Jeong-Sook Hong, Cheolwon Suh, Yoon-Koo Kang, and Jung-Shin Lee .....	6182
<b>Phase 1 and Pharmacokinetic Study of Lexatumumab in Patients with Advanced Cancers.</b> Ruth Plummer, Gerhardt Attard, Simon Pacey, Louise Li, Albiruni Razak, Rebecca Perrett, Mary Barrett, Ian Judson, Stan Kaye, Norma Lynn Fox, Wendy Halpern, Alfred Corey, Hilary Calvert, and Johann de Bono .....	6187

## Cancer Therapy: Preclinical

<b>Antibody and CD8<sup>+</sup> T Cell Responses against HER2/neu Required for Tumor Eradication after DNA Immunization with a Flt-3 Ligand Fusion Vaccine.</b> Francesca Orlandi, Franco M. Venanzi, Antonio Concetti, Hanako Yamauchi, Shakuntala Tiwari, Larry Norton, Jedd D. Wolchok, Alan N. Houghton, and Polly D. Gregor .....	6195
<b>Combination Treatment of Prostate Cancer Cell Lines with Bioactive Soy Isoflavones and Perifosine Causes Increased Growth Arrest and/or Apoptosis.</b> Ruth L. Vinall, Kimberley Hwa, Paramita Ghosh, Chong-Xian Pan, Primo N. Lara, and Ralph W. de Vere White .....	6204
<b>Adenovirally Delivered Tumor Necrosis Factor-<math>\alpha</math> Improves the Antiglioma Efficacy of Concomitant Radiation and Temozolomide Therapy.</b> Bakhtiar Yamini, Xiaohong Yu, Peter Pytel, Nicholas Galanopoulos, Vinay Rawlani, Julia Veerapong, Kai Bickenbach, and Ralph R. Weichselbaum .....	6217

## Cancer Susceptibility and Prevention

<b>The Retinoid LG100268 Prevents the Development of Preinvasive and Invasive Estrogen Receptor-Negative Tumors In MMTV-erbB2 Mice.</b> Yuxin Li, Yun Zhang, Jamal Hill, Qiang Shen, Hee-Tae Kim, Xiaochun Xu, Susan G. Hilsenbeck, Reid P. Bissonnette, William W. Lamph, and Powel H. Brown .....	6224
<b>Telomere Shortening and Chromosomal Abnormalities in Intestinal Metaplasia of the Urinary Bladder.</b> Michael J. Morton, Shaobo Zhang, Antonio Lopez-Beltran, Gregory T. MacLennan, John N. Eble, Rodolfo Montironi, Ming-Tse Sung, Puay-Hoon Tan, Suqin Zheng, Honghong Zhou, and Liang Cheng .....	6232
<b>A New Retinoid, NRX194204, Prevents Carcinogenesis in Both the Lung and Mammary Gland.</b> Karen Liby, Darlene B. Royce, Renee Risingsong, Charlotte R. Williams, Matthew D. Wood, Roshantha A. Chandraratna, and Michael B. Sporn .....	6237

## Letter to the Editor

<b>Potential Biomarkers in Metastatic Gastrointestinal Stromal Tumors.</b> Michiel H. Strijbos, Jaco Kraan, Stefan Sleijfer, and Jan W. Gratama .....	6244
---	------

---

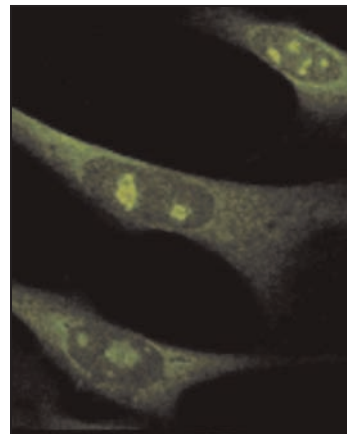
## Corrections

Correction: Article on Pharmacokinetic Study of Vorinostat .....	6245
Correction: Article on La Autoantigen .....	6245

---

### About the Cover

Immunofluorescent analysis of the effect of irradiation on the localization of PKR<sup>+/+</sup> MEFs. PKR expression increased 4 hours after radiation therapy in PKR<sup>+/+</sup> cells. Translocation of PKR was noted in the nucleus of PKR<sup>+/+</sup> MEFs but was not seen in PKR<sup>-/-</sup> cells. Additionally, phosphorylated PKR was increased in the PKR<sup>+/+</sup> cells suggesting activation of PKR after irradiation. For further details, please see Holzen *et al.* on page 6032 in this issue.



# Clinical Cancer Research

**13 (20)**

*Clin Cancer Res* 2007;13:5983-6245.

**Updated version** Access the most recent version of this article at:  
<http://clincancerres.aacrjournals.org/content/13/20>

**E-mail alerts** [Sign up to receive free email-alerts](#) related to this article or journal.

**Reprints and Subscriptions** To order reprints of this article or to subscribe to the journal, contact the AACR Publications Department at [pubs@aacr.org](mailto:pubs@aacr.org).

**Permissions** To request permission to re-use all or part of this article, use this link <http://clincancerres.aacrjournals.org/content/13/20>. Click on "Request Permissions" which will take you to the Copyright Clearance Center's (CCC) Rightslink site.