

## Molecular Pathways

- Neuregulins and Cancer.** Juan Carlos Montero, Ruth Rodríguez-Barrueco, Alberto Ocaña, Elena Díaz-Rodríguez, Azucena Esparís-Ogando, and Atanasio Pandiella.....3237

## Report from the FDA

- Continuing Reassessment of the Risks of Erythropoiesis-Stimulating Agents in Patients with Cancer.** Vinni Juneja, Patricia Keegan, Joseph E. Gootenberg, Mark D. Rothmann, Yuan Li Shen, Kyung Y. Lee, Karen D. Weiss, and Richard Pazdur .....3242

## Human Cancer Biology

- Impact of a Single Nucleotide Polymorphism in the MDM2 Gene on Neuroblastoma Development and Aggressiveness: Results of a Pilot Study on 239 Patients.** Sara Cattelani, Raffaella Defferrari, Sonia Marsilio, Rita Bussolari, Olivia Candini, Francesca Corradini, Giovanna Ferrari-Amorotti, Clara Guerzoni, Luisa Pecorari, Chiara Menin, Roberta Bertorelle, Pierluigi Altavista, Heather P. McDowell, Renata Boldrini, Carlo Dominici, Gian Paolo Tonini, Giuseppe Raschellà, and Bruno Calabretta.....3248

- Phenotypic Analysis of Prostate-Infiltrating Lymphocytes Reveals T<sub>H</sub>17 and T<sub>reg</sub> Skewing.** Karen Sandell Sfanos, Tullia C. Bruno, Charles H. Maris, Lauren Xu, Christopher J. Thoburn, Angelo M. DeMarzo, Alan K. Meeker, William B. Isaacs, and Charles G. Drake .....3254

- Involvement of Hcpcidin in the Anemia of Multiple Myeloma.** Sanjai Sharma, Elizabeta Nemeth, Yi-Hsiang Chen, Julia Goodnough, Alissa Huston, G.D. Roodman, Tomas Ganz, and Alan Lichtenstein .....3262

- Activity of the Bcl-2 Family Inhibitor ABT-263 in a Panel of Small Cell Lung Cancer Xenograft Models.** Alex R. Shoemaker, Michael J. Mitten, Jessica Adickes, Scott Ackler, Marion Refici, Debra Ferguson, Anatol Oleksijew, Jacqueline M. O'Connor, Baole Wang, David J. Frost, Joy Bauch, Kennan Marsh, Steven K. Tahir, Xiufen Yang, Christin Tse, Stephen W. Fesik, Saul H. Rosenberg, and Steven W. Elmore .....3268

- Mutant Epidermal Growth Factor Receptor in Benign, Borderline, and Malignant Ovarian Tumors.** Karina Dahl Steffensen, Marianne Waldstrøm, Dorte Aalund Olsen, Thomas Corydon, Karen Axelgaard Lorentzen, Hans Jørgen Knudsen, Ulla Jeppesen, Ivan Brandslund, and Anders Jakobsen .....3278

- Intertumor and Intratumor NY-ESO-1 Expression Heterogeneity Is Associated with Promoter-Specific and Global DNA Methylation Status in Ovarian Cancer.** Anna Woloszynska-Read, Paulette Mhaweck-Faucegla, Jihnee Yu, Kunle Odunsi, and Adam R. Karpf.....3283

- ECSA/DPPA2 is an Embryo-Cancer Antigen that Is Coexpressed with Cancer-Testis Antigens in Non-Small Cell Lung Cancer.** Thomas John, Otavia L. Caballero, Suzanne J. Svobodová, Alan Kong, Ramon Chua, Judy Browning, Sheila Fortunato, Siddhartha Deb, Melinda Hsu, Craig A. Gedye, Ian D. Davis, Nasser Altorki, Andrew J. Simpson, Yao-Tseng Chen, Marilyn Monk, and Jonathan S. Cebon.....3291

- Focal Adhesion Kinase Expression in Human Neuroblastoma: Immunohistochemical and Real-time PCR Analyses.** Elizabeth A. Beierle, Nicole A. Massoll, Joseph Hartwich, Elena V. Kurenova, Vita M. Golubovskaya, William G. Cance, Patrick McGrady, and Wendy B. London.....3299

## Imaging, Diagnosis, Prognosis

- Disseminated Tumor Cells of Breast Cancer Patients: A Strong Prognostic Factor for Distant and Local Relapse.** Francois-Clément Bidard, Anne Vincent-Salomon, Stéphanie Gomme, Claude Nos, Yann de Rycke, Jean Paul Thiery, Brigitte Sigal-Zafrani, Laurent Mignot, Xavier Sastre-Garau, and Jean-Yves Pierga for the Institut Curie Breast Cancer Study Group.....3306

<b>Effect of <i>SLCO1B3</i> Haplotype on Testosterone Transport and Clinical Outcome in Caucasian Patients with Androgen-Independent Prostatic Cancer.</b> Akinobu Hamada, Tristan Sissung, Douglas K. Price, Romano Danesi, Cindy H. Chau, Nima Sharifi, David Venzon, Kenji Maeda, Keisuke Nagao, Alex Sparreboom, Hiroaki Mitsuya, William L. Dahut, and William D. Figg.....	3312
<b>Astrocyte Elevated Gene-1 is a Novel Prognostic Marker for Breast Cancer Progression and Overall Patient Survival.</b> Jun Li, Nu Zhang, Li-Bing Song, Wen-Ting Liao, Li-Li Jiang, Li-Yun Gong, Jueheng Wu, Jie Yuan, Hui-Zhong Zhang, Mu-Sheng Zeng, and Mengfeng Li.....	3319
<b>Identification of Genes Differentially Expressed in Benign versus Malignant Thyroid Tumors.</b> Nijaguna B. Prasad, Helina Somervell, Ralph P. Tufano, Alan P.B. Dackiw, Michael R. Marohn, Joseph A. Califano, Yongchun Wang, William H. Westra, Douglas P. Clark, Christopher B. Umbricht, Steven K. Libutti, and Martha A. Zeiger .....	3327
<b>AP1-Dependent Galectin-1 Expression Delineates Classical Hodgkin and Anaplastic Large Cell Lymphomas from Other Lymphoid Malignancies with Shared Molecular Features.</b> Scott J. Rodig, Jing Ouyang, Przemyslaw Juszczynski, Treeve Currie, Kenneth Law, Donna S. Neuberg, Gabriel A. Rabinovich, Margaret A. Shipp, and Jeffery L. Kutok.....	3338
<b>Prediction of Nodal Involvement in Breast Cancer Based on Multiparametric Protein Analyses from Preoperative Core Needle Biopsies of the Primary Lesion.</b> Georg Sauer, Nicole Schneiderhan-Marra, Cornelia Kazmaier, Kathrin Hutzler, Karin Koretz, Rainer Mueche, Rolf Kreienberg, Thomas Joos, and Helmut Deissler .....	3345
<b>Aneuploidy Predicts Outcome in Patients with Endometrial Carcinoma and Is Related to Lack of <i>CDH13</i> Hypermethylation.</b> Yutaka Suehiro, Toshiyuki Okada, Takae Okada, Keiko Anno, Naoko Okayama, Koji Ueno, Mikako Hiura, Mikiko Nakamura, Tomoko Kondo, Atsunori Oga, Shigeto Kawachi, Kei Hirabayashi, Fumitaka Numa, Takehisa Ito, Toshiaki Saito, Kohsuke Sasaki, and Yuji Hinoda.....	3354
<b>Preoperative Plasma Endoglin Levels Predict Biochemical Progression After Radical Prostatectomy.</b> Robert S. Svatek, Jose A. Karam, Claus G. Roehrborn, Pierre I. Karakiewicz, Kevin M. Slawin, and Shahrokh F. Shariat.....	3362
<b>Genetic Polymorphism in <i>EGF</i> Is Associated with Prostate Cancer Aggressiveness and Progression-Free Interval in Androgen Blockade–Treated Patients.</b> Ana L. Teixeira, Ricardo Ribeiro, Diana Cardoso, Daniela Pinto, Francisco Lobo, Avelino Fraga, Francisco Pina, Fernando Calais-da-Silva, and Rui Medeiros .....	3367
<b>HLA Class I Antigen Processing Machinery Component Expression and Intratumoral T-Cell Infiltrate as Independent Prognostic Markers in Ovarian Carcinoma.</b> Liz Y. Han, Mavis S. Fletcher, Diana L. Urbauer, Peter Mueller, Charles N. Landen, Aparna A. Kamat, Yvonne G. Lin, William M. Merritt, Whitney A. Spannuth, Michael T. Deavers, Koen De Geest, David M. Gershenson, Susan K. Lutgendorf, Soldano Ferrone, and Anil K. Sood .....	3372
<b>Characterization of <i>TMPRSS2-ERG</i> Fusion High-Grade Prostatic Intraepithelial Neoplasia and Potential Clinical Implications.</b> Juan-Miguel Mosquera, Sven Perner, Elizabeth M. Genega, Martin Sanda, Matthias D. Hofer, Kirsten D. Mertz, Pamela L. Paris, Jeff Simko, Tarek A. Bismar, Gustavo Ayala, Rajal B. Shah, Massimo Loda, and Mark A. Rubin .....	3380
<b>Protein Expression of Platelet-Derived Growth Factor Receptor Correlates with Malignant Histology and <i>PTEN</i> with Survival in Childhood Gliomas.</b> Halldora K. Thorarinsdottir, Mariarita Santi, Robert McCarter, Elisabeth J. Rushing, Robert Cornelison, Alessandra Jales, and Tobey J. MacDonald.....	3386
<b><i>TMPRSS2:ERG</i> Fusion Identifies a Subgroup of Prostate Cancers with a Favorable Prognosis.</b> Outi R. Saramäki, Anna E. Harjula, Paula M. Martikainen, Robert L. Vessella, Teuvo L.J. Tammela, and Tapio Visakorpi.....	3395
<b>Human High Molecular Weight–Melanoma-Associated Antigen: Utility for Detection of Metastatic Melanoma in Sentinel Lymph Nodes.</b> Yasufumi Goto, Soldano Ferrone, Takaaki Arigami, Minoru Kitago, Atsushi Tanemura, Eiji Sunami, Sandy L. Nguyen, Roderick R. Turner, Donald L. Morton, and Dave S.B. Hoon.....	3401

- Prognostic Significance of Defective Mismatch Repair and BRAF V600E in Patients with Colon Cancer.** Amy J. French, Daniel J. Sargent, Lawrence J. Burgart, Nathan R. Foster, Brian F. Kabat, Richard Goldberg, Lois Shepherd, Harold E. Windschitl, and Stephen N. Thibodeau .....3408
- Changes in Tumor Metabolism as Readout for Mammalian Target of Rapamycin Kinase Inhibition by Rapamycin in Glioblastoma.** Liu Hua Wei, Helen Su, Isabel J. Hildebrandt, Michael E. Phelps, Johannes Czernin, and Wolfgang A. Weber.....3416

## Cancer Therapy: Clinical

- Development of Clinical Trials in a Cooperative Group Setting: The Eastern Cooperative Oncology Group.** David M. Diltz, Alan Sandler, Steven Cheng, Joshua Crites, Lori Ferranti, Amy Wu, Robert Gray, Jean MacDonald, Donna Marinucci, and Robert Comis .....3427
- A Phase I and Pharmacokinetic Study of Weekly Oxaliplatin Followed by Paclitaxel in Patients with Solid Tumors.** Tanios S. Bekaii-Saab, Jing Liu, Kenneth K. Chan, Stanley P. Balcerzak, Percy S. Ivy, Michael R. Grever, and Eric H. Kraut.....3434
- Evaluation of the Pharmacodynamic Effects of MGCD0103 from Preclinical Models to Human Using a Novel HDAC Enzyme Assay.** Claire Bonfils, Ann Kalita, Marja Dubay, Lillian L. Siu, Michael A. Carducci, Gregory Reid, Robert E. Martell, Jeffrey M. Besterman, and Zuomei Li .....3441
- A Phase 1 Study of Mapatumumab (Fully Human Monoclonal Antibody to TRAIL-R1) in Patients with Advanced Solid Malignancies.** Sébastien J. Hotte, Hal W. Hirte, Eric X. Chen, Lillian L. Siu, Lyly H. Le, Alfred Corey, Anne Iacobucci, Martha MacLean, Larry Lo, Norma Lynn Fox, and Amit M. Oza .....3450
- A Phase I Study of 17-Allylamino-17-Demethoxygeldanamycin Combined with Paclitaxel in Patients with Advanced Solid Malignancies.** Suresh S. Ramalingam, Merrill J. Egorin, Ramesh K. Ramanathan, Scot C. Remick, Rachel P. Sikorski, Theodore F. Lagattuta, Gurkamal S. Chatta, David M. Friedland, Ronald G. Stoller, Douglas M. Potter, S. Percy Ivy, and Chandra P. Belani .....3456
- A Dose-Escalation Study of Recombinant Human Interleukin-18 Using Two Different Schedules of Administration in Patients with Cancer.** Michael J. Robertson, John M. Kirkwood, Theodore F. Logan, Kevin M. Koch, Steven Kathman, Lyndon C. Kirby, William N. Bell, Linda M. Thurmond, Jill Weisenbach, and Mohammed M. Dar .....3462
- Hypertension and Rarefaction during Treatment with Telatinib, a Small Molecule Angiogenesis Inhibitor.** Neeltje Steeghs, Hans Gelderblom, Jos op 't Roodt, Olaf Christensen, Prabhu Rajagopalan, Marcel Hovens, Hein Putter, Ton J. Rabelink, and Eelco de Koning .....3470
- Oral Administration of Gemcitabine in Patients with Refractory Tumors: A Clinical and Pharmacologic Study.** Stephan A. Veltkamp, Robert S. Jansen, Sophie Callies, Dick Pluim, Carla M. Visseren-Grul, Hilde Rosing, Susanne Kloeker-Rhoades, Valerie A.M. Andre, Jos H. Beijnen, Christopher A. Slapak, and Jan H.M. Schellens.....3477
- Adjuvant Radioimmunotherapy Trial with Iodine-131–Labeled Anti–Carcinoembryonic Antigen Monoclonal Antibody F6 F(ab')<sub>2</sub> after Resection of Liver Metastases from Colorectal Cancer.** Marc Ychou, David Azria, Cathy Menkarios, Patrick Faurous, François Quenet, Bernard Saint-Aubert, Philippe Rouanet, Monique Pèlerin, Caroline Bascoul-Mollevi, Dominique Guerreau, Jean-Claude Saccavini, Jean-Pierre Mach, Jean-Claude Artus, and André Pèlerin .....3487
- Methylated *NEUROD1* Promoter is a Marker for Chemosensitivity in Breast Cancer.** Heidi Fiegl, Allison Jones, Cornelia Hauser-Kronberger, Georg Hutarew, Roland Reitsamer, Robin L. Jones, Mitch Dowsett, Elisabeth Mueller-Holzner, Gudrun Windbichler, Günter Daxenbichler, Georg Goebel, Christian Ensinger, Ian Jacobs, and Martin Widschwendter .....3494

## Cancer Therapy: Preclinical

- Proteasome  $\beta$  Subunit Pharmacogenomics: Gene Resequencing and Functional Genomics.** Liewei Wang, Shaji Kumar, Brooke L. Fridley, Krishna R. Kalari, Irene Moon, Linda L. Pelleymounter, Michelle A.T. Hildebrandt, Anthony Batzler, Bruce W. Eckloff, Eric D. Wieben, and Philip R. Greipp.....3503

<b>Retinoblastoma RB94 Enhances Radiation Treatment of Head and Neck Squamous Cell Carcinoma.</b> Koji Araki, Sidrah M. Ahmad, Guoyan Li, David A. Bray, Jr., Koichiro Saito, Daiyou Wang, Uwe Wirtz, Sunil Sreedharan, Bert W. O'Malley, Jr., and Daqing Li.....	3514
<b>Direct and Natural Killer Cell-Mediated Antitumor Effects of Low-Dose Bortezomib in Hepatocellular Carcinoma.</b> Sorin Armeanu, Matthias Krusch, Katrin M. Baltz, Thomas S. Weiss, Irina Smirnow, Alexander Steinle, Ulrich M. Lauer, Michael Bitzer, and Helmut R. Salih.....	3520
<b>Modulation of Gemcitabine (2',2'-Difluoro-2'-Deoxycytidine) Pharmacokinetics, Metabolism, and Bioavailability in Mice by 3,4,5,6-Tetrahydrouridine.</b> Jan H. Beumer, Julie L. Eiseman, Robert A. Parise, Erin Joseph, Joseph M. Covey, and Merrill J. Egorin.....	3529
<b>Combination of Docetaxel and Recombinant Vaccine Enhances T-Cell Responses and Antitumor Activity: Effects of Docetaxel on Immune Enhancement.</b> Charlie T. Garnett, Jeffrey Schlom, and James W. Hodge.....	3536
<b>Lymphocyte Activation Gene-3 Fusion Protein Increases the Potency of a Granulocyte Macrophage Colony-Stimulating Factor–Secreting Tumor Cell Immunotherapy.</b> Betty Li, Melinda VanRoey, Frederic Triebel, and Karin Jooss.....	3545
<b>Preclinical Evaluation of the <math>\alpha</math>-Particle Generator Nuclide <math>^{225}\text{Ac}</math> for Somatostatin Receptor Radiotherapy of Neuroendocrine Tumors.</b> Matthias Miederer, Gjermund Henriksen, Andrea Alke, Ilona Mossbrugger, Leticia Quintanilla-Martinez, Reingard Senekowitsch-Schmidtko, and Markus Essler.....	3555
<b>The Iroquois Homeobox Gene 5 Is Regulated by 1,25-Dihydroxyvitamin D<sub>3</sub> in Human Prostate Cancer and Regulates Apoptosis and the Cell Cycle in LNCaP Prostate Cancer Cells.</b> Anne Myrthue, Brooks L.S. Rademacher, Janet Pittsenbarger, Bozena Kutyla-Brooks, Marin Gantner, David Z. Qian, and Tomasz M. Beer.....	3562
<b>Combining Nanoliposomal Ceramide with Sorafenib Synergistically Inhibits Melanoma and Breast Cancer Cell Survival to Decrease Tumor Development.</b> Melissa A. Tran, Charles D. Smith, Mark Kester, and Gavin P. Robertson.....	3571
<b>A Fiber-Modified Mesothelin Promoter–Based Conditionally Replicating Adenovirus for Treatment of Ovarian Cancer.</b> Yuko Tsuruta, Larisa Pereboeva, Martina Breidenbach, Daniel T. Rein, Minghui Wang, Ronald D. Alvarez, Gene P. Siegal, Paul Dent, Paul B. Fisher, and David T. Curiel.....	3582
<b>Combination Strategy Targeting the Hypoxia Inducible Factor-1<math>\alpha</math> with Mammalian Target of Rapamycin and Histone Deacetylase Inhibitors.</b> Henk M.W. Verheul, Brenda Salumbides, Karen Van Erp, Hans Hammers, David Z. Qian, Tolib Sanni, Peter Atadja, and Roberto Pili.....	3589
<b>A Paclitaxel-Hyaluronan Bioconjugate Targeting Ovarian Cancer Affords a Potent <i>In vivo</i> Therapeutic Activity.</b> Alessandra Banzato, Sara Bobisse, Maria Rondina, Davide Renier, Fabio Bettella, Giovanni Esposito, Luigi Quintieri, Laura Meléndez-Alafort, Ulderico Mazzi, Paola Zanolletto, and Antonio Rosato.....	3598
<b>Nonviral Nanoscale-Based Delivery of Antisense Oligonucleotides Targeted to Hypoxia-Inducible Factor 1<math>\alpha</math> Enhances the Efficacy of Chemotherapy in Drug-Resistant Tumor.</b> Yang Wang, Maha Saad, Refika I. Pakunlu, Jayant J. Khandare, Olga B. Garbuzenko, Alexandre A. Vetcher, Viatcheslav A. Soldatenkov, Vitaly P. Pozharov, and Tamara Minko.....	3607
<b>Matrix metalloproteinase-9 Inhibition Down-Regulates Radiation-Induced Nuclear Factor-<math>\kappa\text{B}</math> Activity Leading to Apoptosis in Breast Tumors.</b> Sateesh Kunigal, Sajani S. Lakka, Pushpa Joseph, Norman Estes, and Jasti S. Rao.....	3617

## Cancer Prevention and Susceptibility

<b>Gly<sup>82</sup>Ser Polymorphism of the Receptor for Advanced Glycation End Products Is Associated with an Increased Risk of Gastric Cancer in a Chinese Population.</b> Haijuan Gu, Li Yang, Qingmin Sun, Bo Zhou, Naping Tang, Rihong Cong, Ying Zeng, and Bin Wang.....	3627
---	------

---

**A Novel Functional Polymorphism C1797G in the MDM2 Promoter Is Associated with Risk of Bladder Cancer in a Chinese Population.** Meilin Wang, Zhizhong Zhang, Haixia Zhu, Guangbo Fu, Shouyu Wang, Dongmei Wu, Jianwei Zhou, Qingyi Wei, and Zhengdong Zhang .....3633

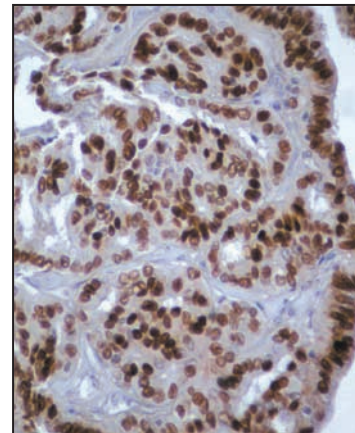
**Correction**

**Correction: Article on Cardiac Toxicity and Trastuzumab Combined with Pertuzumab.....3641**

---

**About the Cover**

Immunohistochemical staining of *HMG2* in papillary thyroid cancer. Very high expression was observed in malignant thyroid subtypes compared with benign (×400 original magnification). For further details, please see the article by Prasad and coworkers on page 3327 of this issue.



# Clinical Cancer Research

14 (11)

*Clin Cancer Res* 2008;14:3237-3641.

**Updated version** Access the most recent version of this article at:  
<http://clincancerres.aacrjournals.org/content/14/11>

**E-mail alerts** [Sign up to receive free email-alerts](#) related to this article or journal.

**Reprints and Subscriptions** To order reprints of this article or to subscribe to the journal, contact the AACR Publications Department at [pubs@aacr.org](mailto:pubs@aacr.org).

**Permissions** To request permission to re-use all or part of this article, use this link <http://clincancerres.aacrjournals.org/content/14/11>. Click on "Request Permissions" which will take you to the Copyright Clearance Center's (CCC) Rightslink site.