

CCR Translations

- Urokinase-Type Plasminogen Activator Receptor: A Beacon of Malignancy?**
Ronny Drapkin, Adam Clauss, and Steven Skates5643

CCR Practice of Translational Oncology

- Pancreatic Cancer Stem Cells: Implications for the Treatment of Pancreatic Cancer.**
Diane M. Simeone.....5646

Molecular Pathways

- Urokinase Plasminogen Activator Receptor Choreographs Multiple Ligand Interactions: Implications for Tumor Progression and Therapy.** Andrew P. Mazar.....5649
- Advances in Targeting IKK and IKK-Related Kinases for Cancer Therapy.** Dung-Fang Lee and Mien-Chie Hung.....5656

CCR Special Focus

- From the Editor.** Susan E. Bates5663
- The Translational Research Working Group Developmental Pathways: Introduction and Overview.** Ernest T. Hawk, Lynn M. Matrisian, William G. Nelson, Gary S. Dorfman, Lisa Stevens, Jennifer Kwok, Jaye Viner, Judith Hautala, and Oren Grad for the Translational Research Working Group5664
- Translational Research Working Group Developmental Pathway for Biospecimen-Based Assessment Modalities.** Sudhir Srivastava, Joe W. Gray, Brian J. Reid, Oren Grad, Addison Greenwood, and Ernest T. Hawk for the Translational Research Working Group5672
- The Translational Research Working Group Developmental Pathway for Image-Based Assessment Modalities.** Gary S. Dorfman, Daniel C. Sullivan, Mitchell D. Schnall, and Lynn M. Matrisian for the Translational Research Working Group5678
- The Translational Research Working Group Developmental Pathway for Anticancer Agents (Drugs or Biologics).** Richard L. Schilsky, Gary Gordon, Tona M. Gilmer, Sara A. Courtneidge, Lynn M. Matrisian, Oren Grad, and William G. Nelson for the Translational Research Working Group5685
- Translational Research Working Group Developmental Pathway for Immune Response Modifiers.** Martin A. Cheever, Jeffrey Schlom, Louis M. Weiner, H. Kim Lysterly, Mary L. Disis, Addison Greenwood, Oren Grad, and William G. Nelson for the Translational Research Working Group5692
- The Translational Research Working Group Developmental Pathway for Interventive Devices.** Gary S. Dorfman, Theodore S. Lawrence, and Lynn M. Matrisian for the Translational Research Working Group.....5700
- The Translational Research Working Group Developmental Pathway for Lifestyle Alterations.** Ernest T. Hawk, Addison Greenwood, Ellen R. Gritz, Anne McTiernan, Thomas Sellers, Stephen D. Hursting, Scott Leischow, and Oren Grad for the Translational Research Working Group5707

Human Cancer Biology

- Multiple Primary Sporadic Gastrointestinal Stromal Tumors in the Adult: An Underestimated Entity.** Daniela Gasparotto, Sabrina Rossi, Italo Bearzi, Claudio Doglioni, Alessandra Marzotto, Jason L. Hornick, Alessandra Grizzo, Chiara Sartor, Alessandra Mandolesi, Raf Sciot, Maria Debiec-Rychter, Angelo Paolo Dei Tos, and Roberta Maestro5715

Type III Transforming Growth Factor-β (TGF-β) Receptor Mediates Apoptosis in Renal Cell Carcinoma Independent of the Canonical TGF-β Signaling Pathway. Vitaly Margulis, Tapati Maity, Xiu-Ying Zhang, Simon J. Cooper, John A. Copland, and Christopher G. Wood	5722
Frequency and Distinctive Spectrum of KRAS Mutations in Never Smokers with Lung Adenocarcinoma. Gregory J. Riely, Mark G. Kris, Daniel Rosenbaum, Jenifer Marks, Allan Li, Dhananjay A. Chitale, Khedoudja Nafa, Elyn R. Riedel, Meier Hsu, William Pao, Vincent A. Miller, and Marc Ladanyi.....	5731
Control of Cell Growth and Survival by Enzymes of the Fatty Acid Synthesis Pathway in HCT-116 Colon Cancer Cells. Yanai Zhan, Nicole Ginanni, Michael R. Tota, Margaret Wu, Nathan W. Bays, Victoria M. Richon, Nancy E. Kohl, Eric S. Bachman, Peter R. Strack, and Stefan Krauss	5735

Cancer Therapy: Preclinical

Tris (Dibenzylideneacetone) Dipalladium, a N-Myristoyltransferase-1 Inhibitor, Is Effective against Melanoma Growth <i>In vitro</i> and <i>In vivo</i>. Sulochana S. Bhandarkar, Jacqueline Bromberg, Carol Carrillo, Ponniah Selvakumar, Rajendra K. Sharma, Betsy N. Perry, Baskaran Govindarajan, Levi Fried, Allie Sohn, Kalpana Reddy, and Jack L. Arbiser	5743
Activity of Dasatinib, a Dual SRC/ABL Kinase Inhibitor, and IPI-504, a Heat Shock Protein 90 Inhibitor, against Gastrointestinal Stromal Tumor-Associated PDGFRA^{D842V} Mutation. Barbara Dewaele, Bartosz Wasag, Jan Cools, Raf Sciot, Hans Prenen, Peter Vandenberghe, Agnieszka Wozniak, Patrick Schöffski, Peter Marynen, and Maria Debiec-Rychter	5749
A Novel Inhibitor of Signal Transducers And Activators Of Transcription 3 Activation Is Efficacious Against Established Central Nervous System Melanoma and Inhibits Regulatory T Cells. Ling-Yuan Kong, Mohamed K. Abou-Ghazal, Jun Wei, Arup Chakraborty, Wei Sun, Wei Qiao, Gregory N. Fuller, Izabela Fokt, Elizabeth A. Grimm, Robert J. Schmittling, Gary E. Archer, Jr., John H. Sampson, Waldemar Priebe, and Amy B. Heimberger	5759
GLI2 Knockdown Using an Antisense Oligonucleotide Induces Apoptosis and Chemosensitizes Cells to Paclitaxel in Androgen-Independent Prostate Cancer. Shintaro Narita, Alan So, Susan Ettinger, Norihiro Hayashi, Mototsugu Muramaki, Ladan Fazli, Youngsoo Kim, and Martin E. Gleave	5769
High-Throughput Screening Identifies Cardiac Glycosides as Potent Inhibitors of Human Tissue Kallikrein Expression: Implications for Cancer Therapies. Ioannis Prassas, Miltiadis Paliouras, Alessandro Datti, and Eleftherios P. Diamandis	5778

Imaging, Diagnosis, Prognosis

Cleaved Forms of the Urokinase Plasminogen Activator Receptor in Plasma Have Diagnostic Potential and Predict Postoperative Survival in Patients with Ovarian Cancer. Emir Henić, Christer Borgfeldt, Ib Jarle Christensen, Bertil Casslén, and Gunilla Høyer-Hansen	5785
Chlamydia Infection and Lymphomas: Association Beyond Ocular Adnexal Lymphomas Highlighted by Multiple Detection Methods. Maurilio Ponzoni, Andrés J.M. Ferreri, Massimo Guidoboni, Antonia A. Lettini, Maria Giulia Cangi, Elisa Pasini, Luciano Sacchi, Lorenza Pecciarini, Stefano Grassi, Elena Dal Cin, Rosalba Stefano, Simone Magnino, Riccardo Dolcetti, and Claudio Doglioni	5794
Monitoring Caspase-3 Activation with a Multimodality Imaging Sensor in Living Subjects. Pritha Ray, Abhijit De, Manishkumar Patel, and Sanjiv Sam Gambhir.....	5801
Prognostic Impact of Bim, Puma, and Noxa Expression in Human Colon Carcinomas. Frank A. Sinicrope, Rafaela L. Rego, Kenji Okumura, Nathan R. Foster, Michael J. O'Connell, Daniel J. Sargent, and Harold E. Windschitl	5810
Association of Prostate Cancer Risk Variants with Clinicopathologic Characteristics of the Disease. Jianfeng Xu, Sarah D. Isaacs, Jieli Sun, Ge Li, Kathleen E. Wiley, Yi Zhu, Fang-Chi Hsu, Fredrik Wiklund, Aubrey R. Turner, Tamara S. Adams, Wennuan Liu, Bruce J. Trock, Alan W. Partin, Baoli Chang, Patrick C. Walsh, Henrik Grönberg, William Isaacs, and Siqun Zheng.....	5819

WNT5A Expression Increases during Melanoma Progression and Correlates with Outcome. Philip D. Da Forno, J. Howard Pringle, Peter Hutchinson, Joy Osborn, Qiang Huang, Linda Potter, Rachael A. Hancox, Alan Fletcher, and Gerald S. Saldanha	5825
The Effects of Common Genetic Variants in Oncogenes on Ovarian Cancer Survival. Lydia Quaye, Simon A. Gayther, Susan J. Ramus, Richard A. Di Cioccio, Valerie McGuire, Estrid Hogdall, Claus Hogdall, Jan Blaakr, Douglas F. Easton, Bruce A.J. Ponder, Ian Jacobs, Susanne Kruger Kjaer, Alice S. Whittemore, Celeste Leigh Pearce, Paul D.P. Pharoah, and Honglin Song.....	5833
Predicting Clinical Outcome in Patients Diagnosed with Synchronous Ovarian and Endometrial Cancer. Susan J. Ramus, Karim Elmasry, Zhiyuan Luo, Alex Gammerman, Karen Lu, Ayse Ayhan, Naveena Singh,W. Glenn McCluggage, Ian J. Jacobs, John C. Whittaker, and Simon A. Gayther	5840
Prognostic Effect of Epithelial Cell Adhesion Molecule Overexpression in Untreated Node-Negative Breast Cancer. Marcus Schmidt, Dirk Hasenclever, Mitra Schaeffer, Daniel Boehm, Cristina Cotarelo, Eric Steiner, Antje Lebrecht, Wulf Siggelkow, Wolfgang Weikel, Ilka Schiffer-Petry, Susanne Gebhard, Henryk Pilch, Mathias Gehrmann, Hans-Anton Lehr, Heinz Koelbl, Jan G. Hengstler, and Martin Schuler.....	5849

Cancer Therapy: Clinical

Pharmacokinetic/Pharmacodynamic Modeling and Simulation of Neutropenia during Phase I Development of Liposome-Entrapped Paclitaxel. Gerald J. Fetterly, Thaddeus H. Grasela, Jeffrey W. Sherman, Jeanne L. Dul, Amy Grahn, Diane Lecomte, Jill Fiedler-Kelly, Nevena Damjanov, Mayer Fishman, Michael P. Kane, Eric H. Rubin, and Antoinette R. Tan	5856
Cytochrome P450 2D6 and Homeobox 13/Interleukin-17B Receptor: Combining Inherited and Tumor Gene Markers for Prediction of Tamoxifen Resistance. Matthew P. Goetz, Vera J. Suman, Fergus J. Couch, Matthew M. Ames, James M. Rae, Mark G. Erlander, Xiao-Jun Ma, Dennis C. Sgroi, Carol A. Reynolds, Wilma L. Lingle, Richard M. Weinshilboum, David A. Flockhart, Zeruesenay Desta, Edith A. Perez, and James N. Ingle.....	5864
Clinical Usefulness of EGFR Gene Copy Number as a Predictive Marker in Colorectal Cancer Patients Treated with Cetuximab: A Fluorescent <i>In situ</i> Hybridization Study. Nicola Personeni, Steffen Fieuwis, Hubert Piessevaux, Gert De Hertogh, Jef De Schutter, Bart Biesmans, Wendy De Roock, An Capoen, Maria Debiec-Rychter, Jean-Luc Van Laethem, Marc Peeters, Yves Humblet, Eric Van Cutsem, and Sabine Tejpar.....	5869
Elevated Expression of Glutathione S-Transferase π and p53 Confers Poor Prognosis in Head and Neck Cancer Patients Treated with Chemoradiotherapy but not Radiotherapy Alone. Lisa Schumaker, Nikolaos Nikitakis, Olga Goloubeva, Ming Tan, Rodney Taylor, and Kevin J. Cullen.....	5877
Sunitinib-Induced Myeloid Lineage Redistribution in Renal Cell Cancer Patients: CD1c⁺ Dendritic Cell Frequency Predicts Progression-Free Survival. Hester van Cruijsen, Astrid A.M. van der Veldt, Laura Vroling, Dinja Oosterhoff, Henk J. Broxterman, Rik J. Scheper, Giuseppe Giaccone, John B.A.G. Haanen, Alfons J.M. van den Eertwegh, Epie Boven, Klaas Hoekman, and Tanja D. de Gruijl.....	5884
Gene Expression Profile and Angiogenic Markers Correlate with Response to Neoadjuvant Bevacizumab Followed by Bevacizumab plus Chemotherapy in Breast Cancer. Sherry X. Yang, Seth M. Steinberg, Dat Nguyen, Thomas D. Wu, Zora Modrusan, and Sandra M. Swain	5893
Gene Expression Profiling Reveals Similarities between the <i>In vitro</i> and <i>In vivo</i> Responses of Immune Effector Cells to IFN-α. Jason M. Zimmerer, Gregory B. Lesinski, Amy S. Ruppert, Michael D. Radmacher, Carl Noble, Kari Kendra, Michael J. Walker, and William E. Carson III.....	5900
Randomized Study of Intravenous versus Subcutaneous Interleukin-2, and IFNα in Patients with Good Prognosis Metastatic Renal Cancer. Sylvie Négrier, David Perol, Alain Ravaud, Jacques O. Bay, Stéphane Oudard, Sylvie Chabaud, Pierre Fargeot, Remy Delva, Gael Deplanque, Gwenaëlle Gravis, and Bernard Escudier for the French Immunotherapy Group.....	5907

Impaired Tamoxifen Metabolism Reduces Survival in Familial Breast Cancer Patients.

William G. Newman, Kristen D. Hadfield, Ayshe Latif, Stephen A. Roberts, Andrew Shenton, Christopher McHague, Fiona Lalloo, Sacha Howell, and D. Gareth Evans5913

Cancer Prevention and Susceptibility

Association between Polymorphisms in DNA Base Excision Repair Genes *XRCC1*, *APE1*, and *ADPRT* and Differentiated Thyroid Carcinoma.

Feng-Yu Chiang, Che-Wei Wu, Pi-Jung Hsiao, Wen-Rei Kuo, Ka-Wo Lee, Jen-Chih Lin, Yi-Chu Liao, and Suh-Hang Hank Juo.....5919

Familial Non-VHL Clear Cell (Conventional) Renal Cell Carcinoma:

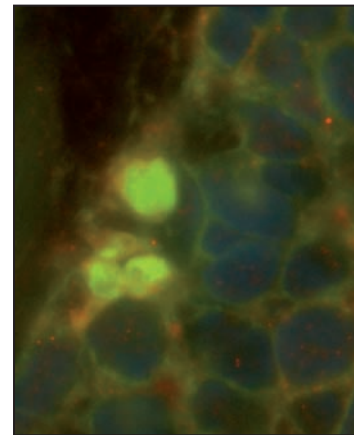
Clinical Features, Segregation Analysis, and Mutation Analysis of *FLCN*. Emma R. Woodward, Christopher Ricketts, Pip Killick, Sophie Gad, M.R. Morris, Fred Kavalier, Shirley V. Hodgson, Sophie Giraud, Brigitte Bressac-de Paillerets, Cyril Chapman, Bernard Escudier, Farida Latif, Stéphane Richard, and Eamonn R. Maher5925

Association of Common *PALB2* Polymorphisms with Breast Cancer Risk: A Case-Control Study.

Peizhan Chen, Jie Liang, Zhanwei Wang, Xiaoyi Zhou, Lu Chen, Mian Li, Dong Xie, Zhibin Hu, Hongbing Shen, and Hui Wang5931

About the Cover

Monocytes/macrophages are the cellular carrier of *Chlamydia* infection in lymphomas. Other cellular elements, including neoplastic B cells and nonneoplastic T cells, endothelia and stromal cells, are not *Chlamydia*'s targets. This infection is usually correlated with marginal zone B-cell lymphomas of ocular adnexa; however, other lymphomas with different histotypes and arising in extra-ocular adnexal sites, in particular represented by air-exposed anatomic locations, may be associated with this infection. For further details, please see Ponzoni and co-workers on page 5794 in this issue.



Clinical Cancer Research

14 (18)

Clin Cancer Res 2008;14:5643-5937.

Updated version Access the most recent version of this article at:
<http://clincancerres.aacrjournals.org/content/14/18>

E-mail alerts [Sign up to receive free email-alerts](#) related to this article or journal.

Reprints and Subscriptions To order reprints of this article or to subscribe to the journal, contact the AACR Publications Department at pubs@aacr.org.

Permissions To request permission to re-use all or part of this article, use this link <http://clincancerres.aacrjournals.org/content/14/18>. Click on "Request Permissions" which will take you to the Copyright Clearance Center's (CCC) Rightslink site.