

CCR Translations

Complexity Made Simple in Diffuse Large B-Cell Lymphoma. Jon Aster and Jeffery Kutok5291
□□ *Commentary on Choi et al., p. 5494*

Blood Flow-Metabolism Mismatch: Good for the Tumor, Bad for the Patient.
David A. Mankoff, Lisa K. Dunnwald, Savannah C. Partridge, and Jennifer M. Specht5294
□□ *Commentary on Komar et al., p. 5511*

Molecular Pathways

The Role of Vascular Endothelial Growth Factor Genetic Variability in Cancer.
Bryan P. Schneider, Milan Radovich, and Kathy D. Miller5297

Complexity of CEBPA Dysregulation in Human Acute Myeloid Leukemia. Thomas Pabst
and Beatrice U. Mueller5303

Review

The Double-Edged Sword of Autophagy Modulation in Cancer. Eileen White
and Robert S. DiPaola5308

Perspective

Integration of Molecular Profiling into the Lung Cancer Clinic. William Pao, Mark G. Kris,
A. John Iafrate, Marc Ladanyi, Pasi A. Jänne, Ignacio I. Wistuba, Ryn Miake-Lye, Roy S. Herbst,
David P. Carbone, Bruce E. Johnson, and Thomas J. Lynch5317

Human Cancer Biology

**The Prioritization of Cancer Antigens: A National Cancer Institute Pilot Project for the
Acceleration of Translational Research.** Martin A. Cheever, James P. Allison, Andrea S. Ferris,
Olivera J. Finn, Benjamin M. Hastings, Toby T. Hecht, Ira Mellman, Sheila A. Prindiville,
Jaye L. Viner, Louis M. Weiner, and Lynn M. Matrisian5323

**Cyclin D1 Splice Variants: Polymorphism, Risk, and Isoform-Specific Regulation in Prostate
Cancer.** Clay E.S. Comstock, Michael A. Augello, Ruth Pe Benito, Jason Karch, Thai H. Tran,
Fransiscus E. Utama, Elizabeth A. Tindall, Ying Wang, Craig J. Burd, Eric M. Groh, Hoa N. Hoang,
Graham G. Giles, Gianluca Severi, Vanessa M. Hayes, Brian E. Henderson, Loïc Le Marchand,
Laurence N. Kolonel, Christopher A. Haiman, Raffaele Baffa, Leonard G. Gomella, Erik S. Knudsen,
Hallgeir Rui, Susan M. Henshall, Robert L. Sutherland, and Karen E. Knudsen5338

**Expression of EBV Latent Antigens, Mammalian Target of Rapamycin, and Tumor Suppression
Genes in EBV-Positive Smooth Muscle Tumors: Clinical and Therapeutic Implications.**
Kong Wee Ong, Marissa Teo, Victor Lee, Danny Ong, Ann Lee, Chieh Suai Tan, A. Vathsala,
and Han Chong Toh5350

**Immunohistochemical Expression of Estrogen and Progesterone Receptors Identifies a
Subset of NSCLCs and Correlates with EGFR Mutation.** Maria G. Raso, Carmen Behrens,
Matthew H. Herynk, Suyu Liu, Ludmila Prudkin, Natalie C. Ozburn, Denise M. Woods,
Ximing Tang, Reza J. Mehran, Cesar Moran, J. Jack Lee, and Ignacio I. Wistuba5359

**Gene Expression Profiling of Bone Marrow Endothelial Cells in Patients with Multiple
Myeloma.** Roberto Ria, Katia Todoerti, Simona Berardi, Addolorata Maria Luce Coluccia,
Annunziata De Luisi, Michela Mattioli, Domenica Ronchetti, Fortunato Morabito, Attilio Guarini,
Maria Teresa Petrucci, Franco Dammacco, Domenico Ribatti, Antonino Neri, and Angelo Vacca5369

Cancer Therapy: Preclinical

**Fractionated but Not Single-Dose Radiotherapy Induces an Immune-Mediated Abscopal
Effect when Combined with Anti-CTLA-4 Antibody.** M. Zahidunnabi Dewan, Ashley E. Galloway,
Noriko Kawashima, J. Keith Dewynngaert, James S. Babb, Silvia C. Formenti, and Sandra Demaria5379

Concurrent and Sequential Administration of Chemotherapy and the Mammalian Target of Rapamycin Inhibitor Temsirolimus in Human Cancer Cells and Xenografts. Andrea S. Fung, Licun Wu, and Ian F. Tannock	5389
Targeted Radiotherapy for Prostate Cancer with an Oncolytic Adenovirus Coding for Human Sodium Iodide Symporter. Tanja Hakkarainen, Maria Rajeci, Mirkka Sarparanta, Mikko Tenhunen, Anu J. Airaksinen, Renée A. Desmond, Kalevi Kairemo, and Akseli Hemminki.....	5396
mTOR Is a Promising Therapeutic Target Both in Cisplatin-Sensitive and Cisplatin-Resistant Clear Cell Carcinoma of the Ovary. Seiji Mabuchi, Chiaki Kawase, Deborah A. Altomare, Kenichirou Morishige, Kenjiro Sawada, Masami Hayashi, Masahiko Tsujimoto, Mareo Yamoto, Andres J. Klein-Szanto, Russell J. Schilder, Masahide Ohmichi, Joseph R. Testa, and Tadashi Kimura.....	5404
15d-PG₂ Induces Apoptosis by Reactive Oxygen Species-mediated Inactivation of Akt in Leukemia and Colorectal Cancer Cells and Shows <i>In vivo</i> Antitumor Activity. Sung-Won Shin, Chi-Yeon Seo, Hoon Han, Jin-Yeong Han, Jin-Sook Jeong, Jong-Young Kwak, and Joo-In Park	5414
Humanized Anti-Interleukin-6 Receptor Antibody Suppresses Tumor Angiogenesis and <i>In vivo</i> Growth of Human Oral Squamous Cell Carcinoma. Satoru Shinriki, Hirofumi Jono, Kazutoshi Ota, Mitsuharu Ueda, Mareina Kudo, Tomoko Ota, Yuichi Oike, Motoyoshi Endo, Mutsuko Ibusuki, Akimitsu Hiraki, Hideki Nakayama, Yoshihiro Yoshitake, Masanori Shinohara, and Yukio Ando	5426
Herbal Extract of <i>Wedelia chinensis</i> Attenuates Androgen Receptor Activity and Orthotopic Growth of Prostate Cancer in Nude Mice. Chin-Hsien Tsai, Feng-Min Lin, Yu-Chih Yang, Ming-Ting Lee, Tai-Lung Cha, Guan-James Wu, Shih-Chuan Hsieh, and Pei-Wen Hsiao.....	5435
Insulin-Like Growth Factor-1 Receptor Inhibition Induces a Resistance Mechanism via the Epidermal Growth Factor Receptor/HER3/AKT Signaling Pathway: Rational Basis for Cotargeting Insulin-Like Growth Factor-1 Receptor and Epidermal Growth Factor Receptor in Hepatocellular Carcinoma. Christèle Desbois-Mouthon, Aurore Baron, Marie-José Blivet-Van Eggelpoël, Laetitia Fartoux, Corinne Venot, Friedhelm Bladt, Chantal Housset, and Olivier Rosmorduc	5445
Epigenetic Silencing of <i>Death Receptor 4</i> Mediates Tumor Necrosis Factor-Related Apoptosis-Inducing Ligand Resistance in Gliomas. Agnes Elias, Markus Siegelin, Albert Steinmüller, Andreas von Deimling, Ulrike Lass, Bernhard Korn, and Wolf Mueller.....	5457
Differences in Repair of DNA Cross-links between Lymphocytes and Epithelial Tumor Cells from Colon Cancer Patients Measured <i>In vitro</i> with the Comet Assay. Mercedes Herrera, Gemma Dominguez, Jose M. Garcia, Cristina Peña, Carmen Jimenez, Javier Silva, Vanesa Garcia, Irene Gomez, Raquel Diaz, Paloma Martin, and Felix Bonilla.....	5466

Imaging, Diagnosis, Prognosis

Salivary microRNA: Discovery, Characterization, and Clinical Utility for Oral Cancer Detection. Noh Jin Park, Hui Zhou, David Elashoff, Bradley S. Henson, Dragana A. Kastratovic, Elliot Abemayor, and David T. Wong	5473
The Importance of Protein Kinase A in Prostate Cancer: Relationship to Patient Outcome in Radiation Therapy Oncology Group Trial 92-02. Alan Pollack, Kyoung-hwa Bae, Li-Yan Khor, Tahseen Al-Saleem, M. Elizabeth Hammond, Varagur Venketesan, Roger W. Byhardt, Sucha O. Asbell, William U. Shipley, and Harold M. Sandler	5478
Tumor Cell-Microenvironment Interaction Models Coupled with Clinical Validation Reveal CCL2 and SNGG as Two Predictors of Colorectal Cancer Hepatic Metastasis. Hai Hu, Lichao Sun, Chunguang Guo, Qian Liu, Zhuan Zhou, Liang Peng, Jian Pan, Long Yu, Jinning Lou, Zhihua Yang, Ping Zhao, and Yuliang Ran	5485
A New Immunostain Algorithm Classifies Diffuse Large B-Cell Lymphoma into Molecular Subtypes with High Accuracy. William W.L. Choi, Dennis D. Weisenburger, Timothy C. Greiner, Miguel A. Piris, Alison H. Banham, Jan Delabie, Rita M. Braziel, Huimin Geng, Javeed Iqbal, Georg Lenz, Julie M. Vose, Christine P. Hans, Kai Fu, Lynette M. Smith, Min Li, Zhongfeng Liu, Randy D. Gascoyne, Andreas Rosenwald, German Ott, Lisa M. Rimsza, Elias Campo, Elaine S. Jaffe, David L. Jaye, Louis M. Staudt, and Wing C. Chan	5494

[¹¹C]Choline Positron Emission Tomography in Estrogen Receptor–Positive Breast Cancer. Kaiyumars B. Contractor, Laura M. Kenny, Justin Stebbing, Adil Al-Nahas, Carlo Palmieri, Dudley Sinnett, Jacqueline S. Lewis, Katy Hogben, Safiye Osman, Sami Shousha, Charles Lowdell, R. Charles Coombes, and Eric O. Aboagye	5503
Decreased Blood Flow with Increased Metabolic Activity: A Novel Sign of Pancreatic Tumor Aggressiveness. Gaber Komar, Saila Kauhanen, Kaisa Liukko, Marko Seppänen, Sami Kajander, Jari Ovaska, Pirjo Nuutila, and Heikki Minn.....	5511
CD24 Is a Novel Predictor for Poor Prognosis of Hepatocellular Carcinoma after Surgery. Xin-Rong Yang, Yang Xu, Bin Yu, Jian Zhou, Jia-Chu Li, Shuang-Jian Qiu, Ying-Hong Shi, Xiao-Ying Wang, Zhi Dai, Guo-Ming Shi, Bin Wu, Li-Ming Wu, Guo-Huan Yang, Bo-Heng Zhang, Wen-Xin Qin, and Jia Fan.....	5518
Tissue Biomarker Development in a Multicentre Trial Context: a Feasibility Study on the PETACC3 Stage II and III Colon Cancer Adjuvant Treatment Trial. Fred T. Bosman, Pu Yan, Sabine Tejpar, Roberto Fiocca, Eric Van Cutsem, Richard D. Kennedy, Daniel Dietrich, and Arnaud Roth.....	5528
Inflammatory Biomarkers and Fatigue during Radiation Therapy for Breast and Prostate Cancer. Julienne E. Bower, Patricia A. Ganz, May Lin Tao, Wenhua Hu, Thomas R. Belin, Saviz Sepah, Steve Cole, and Najib Aziz	5534
Imaging Mass Spectrometry of a Specific Fragment of Mitogen-Activated Protein Kinase/ Extracellular Signal-Regulated Kinase Kinase Kinase 2 Discriminates Cancer from Uninvolved Prostate Tissue. Lisa H. Cazares, Dean Troyer, Savvas Mendrinou, Raymond A. Lance, Julius O. Nyalwidhe, Hind A. Beydoun, Mary Ann Clements, Richard R. Drake, and O. John Semmes	5541
Erythropoietin Receptor Expression and Correlation to Tamoxifen Response and Prognosis in Breast Cancer. Anna-Maria Larsson, Karin Jirstrom, Erik Fredlund, Sofie Nilsson, Lisa Ryden, Göran Landberg, and Sven Pahlman.....	5552
microRNA Profiling Identifies Cancer-Specific and Prognostic Signatures in Pediatric Malignancies. Jun S. Wei, Peter Johansson, Qing-Rong Chen, Young K. Song, Steffen Durinck, Xinyu Wen, Adam T.C. Cheuk, Malcolm A. Smith, Peter Houghton, Christopher Morton, and Javed Khan	5560
A Phase I Study of a 2-Day Lapatinib Chemosensitization Pulse Preceding Nanoparticle Albumin-Bound Paclitaxel for Advanced Solid Malignancies. Amy J. Chien, Julie A. Illi, Andrew H. Ko, Wolfgang M. Korn, Lawrence Fong, Lee-may Chen, Mohammed Kashani-Sabet, Charles J. Ryan, Jonathan E. Rosenberg, Sarita Dubey, Eric J. Small, Thierry M. Jahan, Nola M. Hylton, Benjamin M. Yeh, Yong Huang, Kevin M. Koch, and Mark M. Moasser.....	5569

Cancer Therapy: Clinical

Longitudinal Cytokine Expression during IMRT for Prostate Cancer and Acute Treatment Toxicity. Eva Christensen, Melania Pintilie, Kenneth R. Evans, Michelle Lenarduzzi, Cynthia Ménard, Charles N. Catton, Eleftherios P. Diamandis, and Robert G. Bristow.....	5576
Mapatumumab, a Fully Human Agonistic Monoclonal Antibody That Targets TRAIL-R1, in Combination with Gemcitabine and Cisplatin: a Phase I Study. Constantijne H. Mom, Jaap Verweij, Corina N.A.M. Oldenhuis, Jourik A. Gietema, Norma Lynn Fox, Renée Miceli, Ferry A.L.M. Eskens, Walter J. Loos, Elisabeth G.E. de Vries, and Stefan Sleijfer.....	5584
A Randomized, Double-Blind, Placebo-Controlled, Phase II Study Comparing the Tolerability and Efficacy of Ipilimumab Administered with or without Prophylactic Budesonide in Patients with Unresectable Stage III or IV Melanoma. Jeffrey Weber, John A. Thompson, Omid Hamid, David Minor, Asim Amin, Ilan Ron, Ruggero Ridolfi, Hazem Assi, Anthony Maraveyas, David Berman, Jonathan Siegel, and Steven J. O'Day	5591

Letter to the Editor

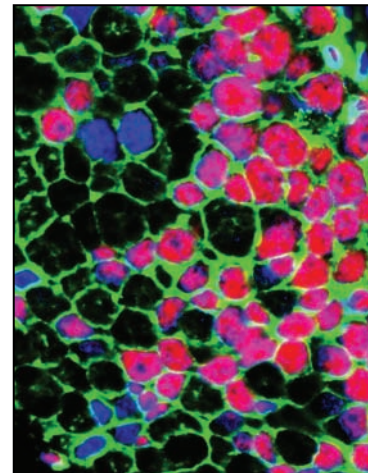
- Variants Weakly Correlated with *CHRNA5* D398N Polymorphism Should be Considered in Transcriptional Deregulation at the 15q25 Locus Associated with Lung Cancer Risk.**
Jen C. Wang, Laura J. Bierut, and Alison M. Goate5599
- Reply to the Letter to the Editor from Wang.** Felicia S. Falvella, Antonella Galvan,
Elisa Frullanti, and Tommaso A. Dragani5599

Corrections

- Correction: Article on Impact of HER2/neu Expression Level on E75 Vaccine Response**5601
- Correction: Article on Canine Spontaneous Soft Tissue Sarcomas**5601

About the Cover

Immunohistochemical analysis of cyclin D1b, a variant of cyclin D1, in human prostate adenocarcinoma. Images were acquired using the Automated Quantitative Analysis (AQUA) Platform (HistoRx). Adenocarcinomas were co-stained for cyclin D1b (*red*), epithelial cytokeratin (*green*), and DAPI to show nuclei (*blue*). For further details, please see Comstock and coworkers on page 5338 in this issue.



Clinical Cancer Research

15 (17)

Clin Cancer Res 2009;15:5291-5601.

Updated version Access the most recent version of this article at:
<http://clincancerres.aacrjournals.org/content/15/17>

E-mail alerts [Sign up to receive free email-alerts](#) related to this article or journal.

Reprints and Subscriptions To order reprints of this article or to subscribe to the journal, contact the AACR Publications Department at pubs@aacr.org.

Permissions To request permission to re-use all or part of this article, use this link <http://clincancerres.aacrjournals.org/content/15/17>. Click on "Request Permissions" which will take you to the Copyright Clearance Center's (CCC) Rightslink site.