

## CCR Translations

- Evaluation of T- and NK-Cell-Targeted Therapies: Is There a Role for Rituximab Prophylaxis?** Richard F. Ambinder.....2205  
  *Commentary on O'Mahony et al., p. 2514*

## Molecular Pathways

- Novel Therapeutic Inhibitors of the c-Met Signaling Pathway in Cancer.** Joseph Paul Eder, George F. Vande Woude, Scott A. Boerner, and Patricia M. LoRusso.....2207

## Perspective

- Stem Cells and the Natural History of Lung Cancer: Implications for Lung Cancer Screening.** Rob J. van Klaveren, Susan C. van't Westeinde, Bart-Jan de Hoop, and Henk C. Hoogsteden.....2215

## Review

- Can Routine Posttransplant HPV Vaccination Prevent Commonly Occurring Epithelial Cancers after Allogeneic Stem Cell Transplantation?** Bipin N. Savani, Stacey Goodman, and A. John Barrett.....2219

## Human Cancer Biology

- Galanin Receptor Subtype 2 Suppresses Cell Proliferation and Induces Apoptosis in p53 Mutant Head and Neck Cancer Cells.** Takeharu Kanazawa, Pavan K. Kommareddi, Toshihide Iwashita, Bhavna Kumar, Kiyoshi Misawa, Yuki Misawa, Ilwhan Jang, Thankam S. Nair, Yukiko Iino, and Thomas E. Carey.....2222

- CCL22 Recruits CD4-positive CD25-positive Regulatory T Cells into Malignant Pleural Effusion.** Xue-Jun Qin, Huan-Zhong Shi, Jing-Min Deng, Qiu-Li Liang, Jing Jiang, and Zhi-Jian Ye.....2231

- CBL Exon 8/9 Mutants Activate the FLT3 Pathway and Cluster in Core Binding Factor/11q Deletion Acute Myeloid Leukemia/Myelodysplastic Syndrome Subtypes.** Carola Reindl, Hilmar Quentmeier, Konstantin Petropoulos, Philipp A. Greif, Tobias Benthaus, Bob Argiropoulos, Gudrun Mellert, Sridhar Vempati, Justus Duyster, Christian Buske, Stefan K. Bohlander, Keith R. Humphries, Wolfgang Hiddemann, and Karsten Spiekermann.....2238

- Constitutive NF- $\kappa$ B Activation in Colorectal Carcinoma Plays a Key Role in Angiogenesis, Promoting Tumor Growth.** Kei Sakamoto, Shin Maeda, Yohko Hikiba, Hayato Nakagawa, Yoku Hayakawa, Wataru Shibata, Ayako Yanai, Keiji Ogura, and Masao Omata.....2248

- The NFATc2 Gene Is Involved in a Novel Cloned Translocation in a Ewing Sarcoma Variant That Couples Its Function in Immunology to Oncology.** Károly Szuhai, Marije IJszenga, Danielle de Jong, Apollon Karseladze, Hans J. Tanke, and Pancras C.W. Hogendoorn.....2259

- PPM1D Is a Potential Therapeutic Target in Ovarian Clear Cell Carcinomas.** David S.P. Tan, Maryou B.K. Lambros, Sydonia Rayter, Rachael Natrajan, Radost Vatcheva, Qiong Gao, Caterina Marchiò, Felipe C. Geyer, Kay Savage, Suzanne Parry, Kerry Fenwick, Narinder Tamber, Alan Mackay, Tim Dexter, Charles Jameson, W. Glenn McCluggage, Alistair Williams, Ashley Graham, Dana Faratian, Mona El-Bahrawy, Adam J. Paige, Hani Gabra, Martin E. Gore, Marketa Zvelebil, Christopher J. Lord, Stanley B. Kaye, Alan Ashworth, and Jorge S. Reis-Filho.....2269

- microRNA-451 Regulates Macrophage Migration Inhibitory Factor Production and Proliferation of Gastrointestinal Cancer Cells.** Eva Bandres, Nerea Bitarte, Fernando Arias, Jackeline Agorreta, Puri Fortes, Xabi Agirre, Ruth Zarate, Juan A. Diaz-Gonzalez, Natalia Ramirez, Jesus J. Sola, Paula Jimenez, Javier Rodriguez, and Jesus Garcia-Foncillas.....2281

- Ligand-dependent Notch Signaling Is Involved in Tumor Initiation and Tumor Maintenance in Pancreatic Cancer.** Michael E. Mullendore, Jan-Bart Koorstra, Yue-Ming Li, G. Johan Offerhaus, Xing Fan, Clark M. Henderson, William Matsui, Charles G. Eberhart, Anirban Maitra, and Georg Feldmann.....2291

<b>Triple-Negative Breast Cancer: Distinguishing between Basal and Nonbasal Subtypes.</b> Emad A. Rakha, Somaia E. Elsheikh, Muhammed A. Aleskandarany, Hany O. Habashi, Andrew R. Green, Desmond G. Powe, Maysa E. El-Sayed, Ahmed Benhasouna, Jean-Sébastien Brunet, Lars A. Akslen, Andy J. Evans, Roger Blamey, Jorge S. Reis-Filho, William D. Foulkes, and Ian O. Ellis.....	2302
<b>Phosphorylation of the src Epithelial Substrate Trask Is Tightly Regulated in Normal Epithelia but Widespread in Many Human Epithelial Cancers.</b> Ching Hang Wong, Frederick L. Baehner, Danislav S. Spassov, Deepika Ahuja, Donghui Wang, Byron Hann, Jimmy Blair, Kevan Shokat, Alana L. Welm, and Mark M. Moasser.....	2311

## Cancer Therapy: Preclinical

<b>Cytosine Deaminase-Uracil Phosphoribosyltransferase and Interleukin (IL)-12 and IL-18: A Multimodal Anticancer Interface Marked by Specific Modulation in Serum Cytokines.</b> Aparajita Khatrri, Yasmin Husaini, Kim Ow, Jane Chapman, and Pamela J. Russell.....	2323
<b>Telomerase-Specific Virotheranostics for Human Head and Neck Cancer.</b> Yuji Kurihara, Yuichi Watanabe, Hideki Onimatsu, Toru Kojima, Tatsuo Shirota, Masashi Hatori, Dong Liu, Satoru Kyo, Hiroyuki Mizuguchi, Yasuo Urata, Satoru Shintani, and Toshiyoshi Fujiwara .....	2335
<b>Brain Accumulation of Dasatinib Is Restricted by P-Glycoprotein (ABCB1) and Breast Cancer Resistance Protein (ABCG2) and Can Be Enhanced by Elacridar Treatment.</b> Jurjen S. Lagas, Robert A.B. van Waterschoot, Vicky A.C.J. van Tilburg, Michel J. Hillebrand, Nienke Lankheet, Hilde Rosing, Jos H. Beijnen, and Alfred H. Schinkel .....	2344
<b>Mathematical Modeling of Herpes Simplex Virus Distribution in Solid Tumors: Implications for Cancer Gene Therapy.</b> Wilson Mok, Triantafyllos Stylianopoulos, Yves Boucher, and Rakesh K. Jain.....	2352
<b>Proteomic Signatures of Epidermal Growth Factor Receptor and Survival Signal Pathways Correspond to Gefitinib Sensitivity in Head and Neck Cancer.</b> Francisco G. Pernas, Clint T. Allen, Mary E. Winters, Bin Yan, Jay Friedman, Bhavana Dabir, Kunal Saigal, Gerhard S. Munding, Xiaojiang Xu, John C. Morris, Katherine R. Calvo, Carter Van Waes, and Zhong Chen .....	2361
<b>Radioimmunotherapy of Experimental Human Metastatic Melanoma with Melanin-Binding Antibodies and in Combination with Dacarbazine.</b> Ekaterina Revskaya, Artemio M. Jongco, Rani S. Sellers, Robertha C. Howell, Wade Koba, Allan J. Guimaraes, Joshua D. Nosanchuk, Arturo Casadevall, and Ekaterina Dadachova.....	2373
<b>Small-Molecule Antagonists for CXCR2 and CXCR1 Inhibit Human Melanoma Growth by Decreasing Tumor Cell Proliferation, Survival, and Angiogenesis.</b> Seema Singh, Anguraj Sadanandam, Kalyan C. Nannuru, Michelle L. Varney, Rosemary Mayer-Ezell, Richard Bond, and Rakesh K. Singh .....	2380
<b>The Antitumor and Immunoadjuvant Effects of IFN-<math>\alpha</math> in Combination with Recombinant Poxvirus Vaccines.</b> Kenneth W. Hance, Connie J. Rogers, David A. Zaharoff, Daniel Canter, Jeffrey Schlom, and John W. Greiner.....	2387
<b>Dose-Dependent Increases in Circulating TGF-<math>\alpha</math> and Other EGFR Ligands Act As Pharmacodynamic Markers for Optimal Biological Dosing of Cetuximab and Are Tumor Independent.</b> Anthony J. Mutsaers, Giulio Francia, Shan Man, Christina R. Lee, John M.L. Ebos, Yan Wu, Larry Witte, Scott Berry, Malcolm Moore, and Robert S. Kerbel .....	2397

## Imaging, Diagnosis, Prognosis

<b>Prognostic Significance of p53 Codon 72 Polymorphism Differs with Race in Colorectal Adenocarcinoma.</b> Venkat R. Katkoori, Xu Jia, Chandrakumar Shanmugam, Wen Wan, Sreelatha Meleth, Harvey Bumpers, William E. Grizzle, and Upender Manne .....	2406
<b>Cdc7 Kinase Is a Predictor of Survival and a Novel Therapeutic Target in Epithelial Ovarian Carcinoma.</b> Anjana A. Kulkarni, Sarah R. Kingsbury, Slavica Tudzarova, Hye-Kyung Hong, Marco Loddo, Mohammed Rashid, Sara Rodriguez-Acebes, Andrew T. Prevost, Jonathan A. Ledermann, Kai Stoeber, and Gareth H. Williams.....	2417

<b>High Tumor Metabolic Activity as Measured by Fluorodeoxyglucose Positron Emission Tomography Is Associated with Poor Prognosis in Limited and Extensive Stage Small-Cell Lung Cancer.</b> Young Joo Lee, Arthur Cho, Byoung Chul Cho, Mijin Yun, Se Kyu Kim, Joon Chang, Jin Wook Moon, In Kyu Park, Hye Jin Choi, and Joo-Hang Kim .....	2426
<b>Tumor Microenvironment of Metastasis in Human Breast Carcinoma: A Potential Prognostic Marker Linked to Hematogenous Dissemination.</b> Brian D. Robinson, Gabriel L. Sica, Yi-Fang Liu, Thomas E. Rohan, Frank B. Gertler, John S. Condeelis, and Joan G. Jones .....	2433
<b>Relationship Between Angiotensin-Converting Enzyme Gene Polymorphism and Body Composition, Functional Performance, and Blood Biomarkers in Advanced Cancer Patients.</b> Antonio Viganò, Barbara Trutschnigg, Robert D. Kilgour, Nancy Hamel, Laura Hornby, Enriqueta Lucar, William Foulkes, Michel L. Tremblay, and José A. Morais .....	2442
<b>Microarray Analysis of Early Stage Serous Ovarian Cancers Shows Profiles Predictive of Favorable Outcome.</b> Andrew Berchuck, Edwin S. Iversen, Jingqin Luo, Jennifer P. Clarke, Hisani Horne, Douglas A. Levine, Jeff Boyd, Miguel A. Alonso, Angeles Alvarez Secord, Marcus Q. Bernardini, Jason C. Barnett, Todd Boren, Susan K. Murphy, Holly K. Dressman, Jeffrey R. Marks, and Johnathan M. Lancaster .....	2448
<b>Combined PTEN and p27<sup>kip1</sup> Protein Expression Patterns Are Associated with Obesity and Prognosis in Endometrial Carcinomas.</b> Athanassios Dellas, Gernot Jundt, Gideon Sartorius, Mischa Schneider, and Holger Moch.....	2456
<b>Medulloblastoma Variants: Age-Dependent Occurrence and Relation to Gorlin Syndrome—A New Clinical Perspective.</b> Maria Luisa Garrè, Armando Cama, Francesca Bagnasco, Giovanni Morana, Felice Giangaspero, Massimo Brisigotti, Claudio Gambini, Marco Forni, Andrea Rossi, Riccardo Haupt, Paolo Nozza, Salvina Barra, Gianluca Piatelli, GianMaria Viglizzo, Valeria Capra, William Bruno, Lorenza Pastorino, Maura Massimino, Miriam Tumolo, Paola Fidani, Sandro Dallorso, Riccardo Fabian Schumacher, Claudia Milanaccio, and Torsten Pietsch.....	2463
<b>Androgen Receptor Levels and Association with PIK3CA Mutations and Prognosis in Breast Cancer.</b> Ana M. Gonzalez-Angulo, Katherine Stemke-Hale, Shana L. Palla, Mark Carey, Roshan Agarwal, Funda Meric-Berstam, Tiffany A. Traina, Clifford Hudis, Gabriel N. Hortobagyi, William L. Gerald, Gordon B. Mills, and Bryan T. Hennessy .....	2472

## Cancer Therapy: Clinical

<b>Potentiation of a Topoisomerase I Inhibitor, Karenitecin, by the Histone Deacetylase Inhibitor Valproic Acid in Melanoma: Translational and Phase I/II Clinical Trial.</b> Adil I. Daud, Jana Dawson, Ronald C. DeConti, Elona Bicaku, Douglas Marchion, Sem Bastien, Frederick A. Hausheer III, Richard Lush, Anthony Neuger, Daniel M. Sullivan, and Pamela N. Munster.....	2479
<b>Clinical and Biological Effects of Valproic Acid as a Histone Deacetylase Inhibitor on Tumor and Surrogate Tissues: Phase I/II Trial of Valproic acid and Epirubicin/FEC.</b> Pamela Munster, Douglas Marchion, Elona Bicaku, Mira Lacevic, Jongphil Kim, Barbara Centeno, Adil Daud, Anthony Neuger, Susan Minton, and Daniel Sullivan.....	2488
<b>A Population Pharmacokinetic Meta-analysis of Sunitinib Malate (SU1248) and Its Primary Metabolite (SU12662) in Healthy Volunteers and Oncology Patients.</b> Brett E. Houk, Carlo L. Bello, Dongwoo Kang, and Michael Amantea .....	2497
<b>Melan-A–specific Cytotoxic T Cells Are Associated with Tumor Regression and Autoimmunity Following Treatment with Anti-CTLA-4.</b> Oliver Klein, Lisa M. Ebert, Theo Nicholaou, Judy Browning, Sarah E. Russell, Marina Zuber, Heather M. Jackson, Nektaria Dimopoulos, Bee Shin Tan, Axel Hoos, Immanuel F. Luescher, Ian D. Davis, Weisan Chen, and Jonathan Cebon.....	2507
<b>EBV-Related Lymphoproliferative Disease Complicating Therapy with the Anti-CD2 Monoclonal Antibody, Siplizumab, in Patients with T-Cell Malignancies.</b> Deirdre O'Mahony, John C. Morris, Maryalice Stetler-Stevenson, Helen Matthews, Margaret R. Brown, Thomas Fleisher, Stefania Pittaluga, Mark Raffeld, Paul S. Albert, Dirk Reitsma, Karen Kaucic, Luz Hammershaimb, Thomas A. Waldmann, and John E. Janik.....	2514

---

<b>Identification of CD20 C-Terminal Deletion Mutations Associated with Loss of CD20 Expression in Non-Hodgkin's Lymphoma.</b> Yasuhito Terui, Yuji Mishima, Natsuhiko Sugimura, Kiyotsugu Kojima, Takuma Sakurai, Yuko Mishima, Ryoko Kuniyoshi, Akiko Taniyama, Masahiro Yokoyama, Sakura Sakajiri, Kengo Takeuchi, Chie Watanabe, Shunji Takahashi, Yoshinori Ito, and Kiyohiko Hatake.....	2523
<b>Limited Amounts of Dendritic Cells Migrate into the T-Cell Area of Lymph Nodes but Have High Immune Activating Potential in Melanoma Patients.</b> Pauline Verdijk, Erik H.J.G. Aarntzen, W. Joost Lesterhuis, A.C. Inge Boullart, Ellemieke Kok, Michelle M. van Rossum, Simon Strijk, Femke Eijckeler, Johannes J. Bonenkamp, Joannes F.M. Jacobs, Willeke Blokx, J. Han J.M. vanKrieken, Irma Joosten, Otto C. Boerman, Wim J.G. Oyen, Gosse Adema, Cornelis J.A. Punt, Carl G. Figdor, and I. Jolanda M. de Vries .....	2531
<b>Characterization of the Class I-Restricted gp100 Melanoma Peptide-stimulated Primary Immune Response in Tumor-Free Vaccine-draining Lymph Nodes and Peripheral Blood.</b> Edwin B. Walker, William Miller, Daniel Haley, Kevin Floyd, Brendan Curti, and Walter J. Urba .....	2541
<b>A Phase I Study with Neratinib (HKI-272), an Irreversible Pan ErbB Receptor Tyrosine Kinase Inhibitor, in Patients with Solid Tumors.</b> Kwok-K. Wong, Paula M. Fracasso, Ronald M. Bukowski, Thomas J. Lynch, Pamela N. Munster, Geoffrey I. Shapiro, Pasi A. Jänne, Joseph P. Eder, Michael J. Naughton, Matthew J. Ellis, Suzanne F. Jones, Tarek Mekhail, Charles Zacharchuk, Jennifer Vermette, Richat Abbas, Susan Quinn, Christine Powell, and Howard A. Burris .....	2552

## Susceptibility and Prevention

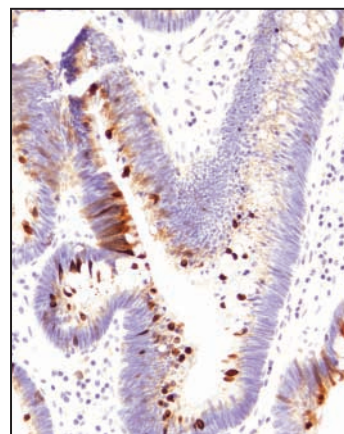
---

<b>Dietary Omega-3 Fatty Acids, Cyclooxygenase-2 Genetic Variation, and Aggressive Prostate Cancer Risk.</b> Vincent Fradet, Iona Cheng, Graham Casey, and John S. Witte .....	2559
<b>A Six-Nucleotide Insertion-Deletion Polymorphism in the CASP8 Promoter Associated with Risk and Progression of Bladder Cancer.</b> Meilin Wang, Zhizhong Zhang, Yuanyuan Tian, Jianfeng Shao, and Zhengdong Zhang.....	2567
<b>Association of MDM2 SNP309, Age of Onset, and Gender in Cutaneous Melanoma.</b> Elnaz F. Firoz, Melanie Warycha, Jan Zakrzewski, Danuta Pollens, Guimin Wang, Richard Shapiro, Russell Berman, Anna Pavlick, Prashiela Manga, Harry Ostrer, Julide Tok Celebi, Hideko Kamino, Farbod Darvishian, Linda Rolnitzky, Judith D. Goldberg, Iman Osman, and David Polsky.....	2573

---

## About the Cover

Phosphorylation of Trask in tumor cells detaching into the luminal space of a tubular adenoma. A section of tubular adenoma was stained by immunohistochemistry using anti-p-Trask antibodies, revealing frequent nonphysiological phosphorylation of Trask and tumor cell shedding in this tumor. For further details, please see the article by Wong and colleagues on page 2311 of this issue.



# Clinical Cancer Research

15 (7)

*Clin Cancer Res* 2009;15:2205-2580.

**Updated version** Access the most recent version of this article at:  
<http://clincancerres.aacrjournals.org/content/15/7>

**E-mail alerts** [Sign up to receive free email-alerts](#) related to this article or journal.

**Reprints and Subscriptions** To order reprints of this article or to subscribe to the journal, contact the AACR Publications Department at [pubs@aacr.org](mailto:pubs@aacr.org).

**Permissions** To request permission to re-use all or part of this article, use this link <http://clincancerres.aacrjournals.org/content/15/7>. Click on "Request Permissions" which will take you to the Copyright Clearance Center's (CCC) Rightslink site.