

**CCR Translations**

- Regulation of Breast Cancer Metastasis by Atypical Chemokine Receptors.** Xiaoyun Cheng and Mien-Chie Hung .....2951  
□□ *Commentary on Feng et al., p. 2962*

**Molecular Pathways**

- IRF4: Immunity. Malignancy! Therapy?** Arthur L. Shaffer, N.C. Tolga Emre, Paul B. Romesser, and Louis M. Staudt.....2954

**Human Cancer Biology**

- Involvement of a Novel Chemokine Decoy Receptor CCX-CKR in Breast Cancer Growth, Metastasis and Patient Survival.** Lan-Yun Feng, Zhou-Luo Ou, Feng-Ying Wu, Zhen-Zhou Shen, and Zhi-Ming Shao .....2962

- Estrous Cycle Modulates Ovarian Carcinoma Growth.** Guillermo N. Armaiz-Pena, Lingegowda S. Mangala, Whitney A. Spannuth, Yvonne G. Lin, Nicholas B. Jennings, Alpa M. Nick, Robert R. Langley, Rosemarie Schmandt, Susan K. Lutgendorf, Steven W. Cole, and Anil K. Sood .....2971

- The Lack of Epithelial Interleukin-7 and BAFF/BLyS Gene Expression in Prostate Cancer as a Possible Mechanism of Tumor Escape from Immunosurveillance.** Emma Di Carlo, Tommaso D'Antuono, Paolo Pompa, Rossella Giuliani, Sandra Rosini, Liborio Stuppia, Piero Musiani, and Carlo Sorrentino .....2979

- Regulation of RUNX3 Tumor Suppressor Gene Expression in Cutaneous Melanoma.** Minoru Kitago, Steve R. Martinez, Takeshi Nakamura, Myung-Shin Sim, and Dave S.B. Hoon .....2988

- Helicobacter pylori Infection Induces Genetic Instability of Nuclear and Mitochondrial DNA in Gastric Cells.** Ana Manuel Dantas Machado, Ceu Figueiredo, Eliette Touati, Valdemar Máximo, Sonia Sousa, Valérie Michel, Fátima Carneiro, Finn Cilius Nielsen, Raquel Seruca, and Lene Juel Rasmussen .....2995

- LYRIC/AEG-1 Is Targeted to Different Subcellular Compartments by Ubiquitylation and Intrinsic Nuclear Localization Signals.** Hayley J. Thirkettle, Joanne Girling, Anne Y. Warren, Ian G. Mills, Kanagasabai Sahadevan, Hing Leung, Freddie Hamdy, Hayley C. Whitaker, and David E. Neal .....3003

- Identification and Metastatic Potential of Tumor-Initiating Cells in Malignant Rhabdoid Tumor of the Kidney.** Satohiko Yanagisawa, Ichiro Kadouchi, Kinji Yokomori, Masao Hirose, Michiyuki Hakozaki, Hiroshi Hojo, Kosaku Maeda, Eiji Kobayashi, and Takashi Murakami .....3014

- Mutation-Specific Antibodies for the Detection of EGFR Mutations in Non-Small-Cell Lung Cancer.** Jian Yu, Susan Kane, Jiong Wu, Elisa Benedettini, Daiqiang Li, Cynthia Reeves, Gregory Innocenti, Randy Wetzel, Katherine Crosby, Alison Becker, Michelle Ferrante, Wan Cheung Cheung, Xiqiang Hong, Lucian R. Chirieac, Lynette M. Sholl, Herbert Haack, Bradley L. Smith, Roberto D. Polakiewicz, Yi Tan, Ting-Lei Gu, Massimo Loda, Xinmin Zhou, and Michael J. Comb .....3023

**Cancer Therapy: Preclinical**

- Phosphatidylinositol-3-Kinase as a Therapeutic Target in Melanoma.** Saadia A. Aziz, Michael Davies, Elah Pick, Christopher Zito, Lucia Jilaveanu, Robert L. Camp, David L. Rimm, Yuval Kluger, and Harriet M. Kluger .....3029

<b>A Novel A33 Promoter–Based Conditionally Replicative Adenovirus Suppresses Tumor Growth and Eradicates Hepatic Metastases in Human Colon Cancer Models.</b> Eduardo G. Cafferata, Daniela R. Macció, Maria V. Lopez, Diego L. Viale, Cecilia Carbone, Guillermo Mazzolini, and Osvaldo L. Podhajcer.....	3037
<b><i>In vitro</i> and <i>In vivo</i> Radiosensitization with AZD6244 (ARRY-142886), an Inhibitor of Mitogen-activated Protein Kinase/Extracellular Signal-regulated Kinase 1/2 Kinase.</b> Eun Joo Chung, Aaron P. Brown, Hiroaki Asano, Mariana Mandler, William E. Burgan, Donna Carter, Kevin Camphausen, and Deborah Citrin.....	3050
<b>Antitumor Activity of GSK1904529A, a Small-molecule Inhibitor of the Insulin-like Growth Factor-I Receptor Tyrosine Kinase.</b> Peter Sabbatini, Jason L. Rowand, Arthur Groy, Susan Korenchuk, Qi Liu, Charity Atkins, Melissa Dumble, Jingsong Yang, Kelly Anderson, Brian J. Wilson, Kyle A. Emmitte, Sridhar K. Rabindran, and Rakesh Kumar .....	3058
<b>Supplementation with Branched-chain Amino Acids Inhibits Azoxymethane-induced Colonic Preneoplastic Lesions in Male C57BL/KsJ-<i>db/db</i> Mice.</b> Masahito Shimizu, Yohei Shirakami, Junpei Iwasa, Makoto Shiraki, Yoichi Yasuda, Kazuya Hata, Yoshinobu Hirose, Hisashi Tsurumi, Takuji Tanaka, and Hisataka Moriwaki .....	3068
<b>Combining Simvastatin with the Farnesyltransferase Inhibitor Tipifarnib Results in an Enhanced Cytotoxic Effect in a Subset of Primary CD34<sup>+</sup> Acute Myeloid Leukemia Samples.</b> Karen van der Weide, Susan D.P.W.M. de Jonge-Peeters, Folkert Kuipers, Elisabeth G.E. de Vries, and Edo Vellenga.....	3076
<b>Functionally Overlapping Roles of Abcg2 (Bcrp1) and Abcc2 (Mrp2) in the Elimination of Methotrexate and Its Main Toxic Metabolite 7-Hydroxymethotrexate <i>In vivo</i>.</b> Maria L.H. Vlaming, Zeliha Pala, Anita van Esch, Els Wagenaar, Dirk R. de Waart, Koen van de Wetering, Cornelia M.M. van der Kruijssen, Ronald P.J. Oude Elferink, Olaf van Tellingén, and Alfred H. Schinkel .....	3084
<b>BI 6727, A Polo-like Kinase Inhibitor with Improved Pharmacokinetic Profile and Broad Antitumor Activity.</b> Dorothea Rudolph, Martin Steegmaier, Matthias Hoffmann, Matthias Grauert, Anke Baum, Jens Quant, Christian Haslinger, Pilar Garin-Chesa, and Günther R. Adolf.....	3094

## Imaging, Diagnosis, Prognosis

<b><i>p53 Arg72Pro</i> and <i>MDM2 T309G</i> Polymorphisms, Histology, and Esophageal Cancer Prognosis.</b> David W. Cescon, Penelope A. Bradbury, Kofi Asomaning, Jessica Hopkins, Rihong Zhai, Wei Zhou, Zhaoxi Wang, Matthew Kulke, Li Su, Clement Ma, Wei Xu, Ariela L. Marshall, Rebecca Suk Heist, John C. Wain, Thomas J. Lynch, Jr., David C. Christiani, and Geoffrey Liu.....	3103
<b>Rectal Mucosal Microvascular Blood Supply Increase Is Associated with Colonic Neoplasia.</b> Andrew J. Gomes, Hemant K. Roy, Vladimir Turzhitsky, Young Kim, Jeremy D. Rogers, Sarah Ruderman, Valentina Stoyneva, Michael J. Goldberg, Laura K. Bianchi, Eugene Yen, Alexey Kromine, Mohammed Jameel, and Vadim Backman .....	3110
<b>Dynamic Contrast-Enhanced Magnetic Resonance Imaging Identifies a Subgroup of Patients with Asymptomatic Monoclonal Plasma Cell Disease and Pathologic Microcirculation.</b> Jens Hillengass, Christian Zechmann, Tobias Bäuerle, Barbara Wagner-Gund, Christiane Heiss, Axel Benner, Anthony Ho, Kai Neben, Dirk Hose, Hans-Ulrich Kauczor, Hartmut Goldschmidt, Stefan Delorme, and Thomas Moehler .....	3118
<b>A Potent, Imaging Adenoviral Vector Driven by the Cancer-selective Mucin-1 Promoter That Targets Breast Cancer Metastasis.</b> Steven T. Huyn, Jeremy B. Burton, Makoto Sato, Michael Carey, Sanjiv S. Gambhir, and Lily Wu.....	3126
<b>Prostate Cancer–Associated Gene Expression Alterations Determined from Needle Biopsies.</b> David Z. Qian, Chung-Ying Huang, Catherine A. O'Brien, Ilsa M. Coleman, Mark Garzotto, Lawrence D. True, Celestia S. Higano, Robert Vessella, Paul H. Lange, Peter S. Nelson, and Tomasz M. Beer.....	3135

<b>KIF5B-ALK, a Novel Fusion Oncokinase Identified by an Immunohistochemistry-based Diagnostic System for ALK-positive Lung Cancer.</b> Kengo Takeuchi, Young Lim Choi, Yuki Togashi, Manabu Soda, Satoko Hatano, Kentaro Inamura, Shuji Takada, Toshihide Ueno, Yoshihiro Yamashita, Yukitoshi Satoh, Sakae Okumura, Ken Nakagawa, Yuichi Ishikawa, and Hiroyuki Mano .....	<b>3143</b>
<b>Neurofuzzy Modeling to Determine Recurrence Risk Following Radical Cystectomy for Nonmetastatic Urothelial Carcinoma of the Bladder.</b> James W.F. Catto, Maysam F. Abbod, Derek A. Linkens, Stéphane Larré, Derek J. Rosario, and Freddie C. Hamdy .....	<b>3150</b>
<b>Utility of p16 Immunohistochemistry for the Identification of Lynch Syndrome.</b> Artemio Payá, Cristina Alenda, Lucía Pérez-Carbonell, Estefanía Rojas, José-Luis Soto, Carmen Guillén, Adela Castillejo, Victor M. Barberá, Alfredo Carrato, Antoni Castells, Xavier Llor, Montserrat Andreu, Jim Koh, Greg H. Enders, Susana Benlloch, and Rodrigo Jover.....	<b>3156</b>
<b>Protein Acetylation and Histone Deacetylase Expression Associated with Malignant Breast Cancer Progression.</b> Junko Suzuki, Yunn-Yi Chen, Gary K. Scott, Sandy DeVries, Koei Chin, Christopher C. Benz, Frederic M. Waldman, and E. Shelley Hwang.....	<b>3163</b>

## Cancer Therapy: Clinical

<b>An Open-Label, Multicenter, Phase I/II Study of Single-Agent AT-101 in Men with Castrate-Resistant Prostate Cancer.</b> Glenn Liu, W. Kevin Kelly, George Wilding, Lance Leopold, Kimberli Brill, and Bradley Somer .....	<b>3172</b>
<b>Phase I Study of MG98, an Oligonucleotide Antisense Inhibitor of Human DNA Methyltransferase 1, Given as a 7-Day Infusion in Patients with Advanced Solid Tumors.</b> Ruth Plummer, Laura Vidal, Melanie Griffin, Mark Lesley, Johann de Bono, Sally Coulthard, Julieann Sludden, Lillian L. Siu, Eric X. Chen, Amit M. Oza, Gregory K. Reid, A. Robert McLeod, Jeffrey M. Besterman, Chooi Lee, Ian Judson, Hilary Calvert, and Alan V. Boddy.....	<b>3177</b>
<b>PIK3CA Mutations Are Not a Major Determinant of Resistance to the Epidermal Growth Factor Receptor Inhibitor Cetuximab in Metastatic Colorectal Cancer.</b> Hans Prenen, Jef De Schutter, Bart Jacobs, Wendy De Roock, Bart Biesmans, Bart Claes, Diether Lambrechts, Eric Van Cutsem, and Sabine Tejpar .....	<b>3184</b>
<b>A Phase I, Pharmacokinetic and Pharmacodynamic Study on Vorinostat in Combination with 5-Fluorouracil, Leucovorin, and Oxaliplatin in Patients with Refractory Colorectal Cancer.</b> Marwan G. Fakih, Lakshmi Pendyala, Gerald Fetterly, Karoli Toth, James A. Zwiebel, Igor Espinoza-Delgado, Alan Litwin, Youcef M. Rustum, Mary Ellen Ross, Julianne L. Holleran, and Merrill J. Egorin.....	<b>3189</b>
<b>Administration of Glucocorticoids to Ovarian Cancer Patients Is Associated with Expression of the Anti-apoptotic Genes <i>SGK1</i> and <i>MKP1/DUSP1</i> in Ovarian Tissues.</b> Amal Melhem, S. Diane Yamada, Gini F. Fleming, Bertha Delgado, Deanna R. Brickley, Wei Wu, Masha Kocherginsky, and Suzanne D. Conzen .....	<b>3196</b>

## Cancer Prevention and Susceptibility

<b>Mutations in the Hepatitis C Virus <i>core</i> Gene Are Associated with Advanced Liver Disease and Hepatocellular Carcinoma.</b> Sarah L. Fishman, Stephanie H. Factor, Cinzia Balestrieri, Xiaofeng Fan, Adrian M. DiBisceglie, Suresh M. Desai, Gary Benson, and Andrea D. Branch .....	<b>3205</b>
<b>The Breast Cancer Susceptibility Mutation <i>PALB2 1592delT</i> Is Associated with an Aggressive Tumor Phenotype.</b> Tuomas Heikkinen, Hanni Kärkkäinen, Kirsimari Aaltonen, Roger L. Milne, Päivi Heikkilä, Kristiina Aittomäki, Carl Blomqvist, and Heli Nevanlinna.....	<b>3214</b>
<b>Evaluation of 8q24 and 17q Risk Loci and Prostate Cancer Mortality.</b> Kathryn L. Penney, Claudia A. Salinas, Mark Pomerantz, Fredrick R. Schumacher, Christine A. Beckwith, Gwo-Shu Lee, William K. Oh, Oliver Sartor, Elaine A. Ostrander, Tobias Kurth, Jing Ma, Lorelei Mucci, Janet L. Stanford, Philip W. Kantoff, David J. Hunter, Meir J. Stampfer, and Matthew L. Freedman.....	<b>3223</b>

---

**Analysis of Recently Identified Prostate Cancer Susceptibility Loci in a Population-based Study: Associations with Family History and Clinical Features.** Liesel M. FitzGerald, Erika M. Kwon, Joseph S. Koopmeiners, Claudia A. Salinas, Janet L. Stanford, and Elaine A. Ostrander .....3231

## Letters to the Editor

---

**Phosphodiesterase-4 Inhibition and Brain Tumor Growth.** Anna Laura Schmidt, Caroline Brunetto de Farias, Ana Lucia Abujamra, Algemir Lunardi Brunetto, Gilberto Schwartzmann, and Rafael Roesler .....3238

**Reply to the Letter to the Editor from Schmidt et al.** Nicole M. Warrington and Joshua B. Rubin ...3238

## Correction

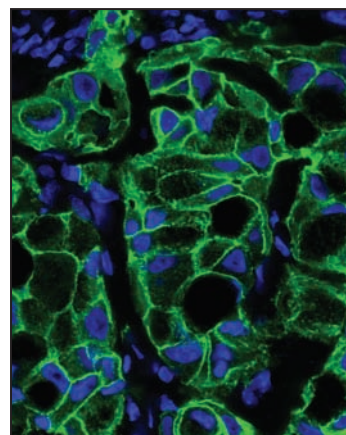
---

**Correction: Article on Genomic and Molecular Profiling to Predict Response to Temozolomide** .....3240

---

## About the Cover

Immunofluorescent detection of EGFR mutation L858R present in the xenograft of NSCLC cell line H3255 using mutation-specific antibodies. Antibody detection of the two most common EGFR mutations in lung cancer has advantages over current DNA sequencing approaches. For further details see the article by Yu and colleagues on page 3023 of this issue.



# Clinical Cancer Research

**15 (9)**

*Clin Cancer Res* 2009;15:2951-3240.

**Updated version** Access the most recent version of this article at:  
<http://clincancerres.aacrjournals.org/content/15/9>

**E-mail alerts** [Sign up to receive free email-alerts](#) related to this article or journal.

**Reprints and Subscriptions** To order reprints of this article or to subscribe to the journal, contact the AACR Publications Department at [pubs@aacr.org](mailto:pubs@aacr.org).

**Permissions** To request permission to re-use all or part of this article, use this link <http://clincancerres.aacrjournals.org/content/15/9>. Click on "Request Permissions" which will take you to the Copyright Clearance Center's (CCC) Rightslink site.