

Highlights of This Issue 3089

SPECIAL FEATURES

CCR Translations

- 3091 | **How to Train Your Biomarker**
Douglas Yee
See article p. 3193

Molecular Pathways

- 3094 | **Inhibition of the PI3K Pathway: Hope We Can Believe in?**
Michiel S. van der Heijden
and René Bernards
- 3100 | **Immunogenic Tumor Cell Death for Optimal Anticancer Therapy: The Calreticulin Exposure Pathway**
Laurence Zitvogel, Oliver Kepp,
Laura Senovilla, Laurie Menger,
Nathalie Chaput, and Guido Kroemer

CCR Focus

- 3105 | **Drugs That Target the Stemness Pathways**
Susan E. Bates
- 3106 | **Controversies in Cancer Stem Cells: Targeting Embryonic Signaling Pathways**
Naoko Takebe and S. Percy Ivy
- 3113 | **Cancer Stem Cells and Self-renewal**
Catherine Adell O'Brien, Antonija Kreso,
and Catriona H.M. Jamieson
- 3121 | **The Difficulty of Targeting Cancer Stem Cell Niches**
Mark A. LaBarge
- 3130 | **Targeting Hedgehog—a Cancer Stem Cell Pathway**
Akil A. Merchant and William Matsui
- 3141 | **Targeting Notch to Target Cancer Stem Cells**
Antonio Pannuti, Kimberly Foreman,
Paola Rizzo, Clodia Osipo, Todd Golde,
Barbara Osborne, and Lucio Miele

- 3153 | **Targeting Wnt Signaling: Can We Safely Eradicate Cancer Stem Cells?**
Fumi Takahashi-Yanaga and Michael Kahn

HUMAN CANCER BIOLOGY

- 3163 | **Molecular Diagnosis of Activating EGFR Mutations in Non-Small Cell Lung Cancer Using Mutation-Specific Antibodies for Immunohistochemical Analysis**
Akihiko Kawahara, Chizuko Yamamoto,
Kazutaka Nakashima, Koichi Azuma,
Satoshi Hattori, Masaki Kashiwara,
Hisamichi Aizawa, Yuji Basaki,
Michihiko Kuwano, Masayoshi Kage,
Tetsuya Mitsudomi, and Mayumi Ono
- 3171 | **Aurora Kinase A Promotes Ovarian Tumorigenesis through Dysregulation of the Cell Cycle and Suppression of BRCA2**
Gong Yang, Bin Chang, Fan Yang,
Xiaoqing Guo, Kathy Qi Cai,
Xue (Sherry) Xiao, Huamin Wang,
Subrata Sen, Mien-Chie Hung,
Gordon B. Mills, Sandy Chang,
Asha S. Multani, Imelda Mercado-Uribe,
and Jinsong Liu

CANCER THERAPY: PRECLINICAL

- 3182 | **FTY720 Shows Promising *In vitro* and *In vivo* Preclinical Activity by Downmodulating Cyclin D1 and Phospho-Akt in Mantle Cell Lymphoma**
Qing Liu, Lapo Alinari, Ching-Shih Chen,
Fengting Yan, James T. Dalton,
Rosa Lapalombella, Xiaoli Zhang,
Rajeswaran Mani, Teresa Lin, John C. Byrd,
Robert A. Baiocchi, and Natarajan Muthusamy
- 3193 | **Development of an Integrated Genomic Classifier for a Novel Agent in Colorectal Cancer: Approach to Individualized Therapy in Early Development**
Todd M. Pitts, Aik Choon Tan,
Gillian N. Kulikowski, John J. Tentler,
Amy M. Brown, Sara A. Flanigan,
Stephen Leong, Christopher D. Coldren,
Fred R. Hirsch, Marileila Varela-Garcia,
Christopher Korch, and S. Gail Eckhardt
See commentary p. 3091

- 3205 | **Molecular Imaging of N-linked Glycosylation Suggests Glycan Biosynthesis Is a Novel Target for Cancer Therapy**
Joseph N. Contessa, Mahaveer S. Bhojani, Hudson H. Freeze, Brian D. Ross, Alnawaz Rehemtulla, and Theodore S. Lawrence

IMAGING, DIAGNOSIS, PROGNOSIS

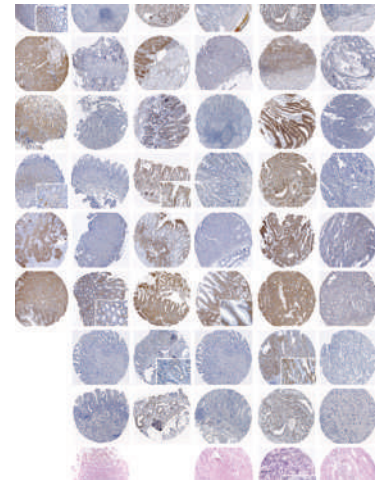
- 3215 | **Drug-Induced Vessel Remodeling in Bone Metastases as Assessed by Dynamic Contrast Enhanced Magnetic Resonance Imaging and Vessel Size Imaging: A Longitudinal *In vivo* Study**
Tobias Bäuerle, Maximilian Merz, Dorde Komljenovic, Stefan Zwick, and Wolfhard Semmler
- 3226 | **Complement Factor H Autoantibodies Are Associated with Early Stage NSCLC**
Nita Amornsiripanitch, Shaolin Hong, Michael J. Campa, Michael M. Frank, Elizabeth B. Gottlin, and Edward F. Patz, Jr.
- 3232 | **A Four-Kallikrein Panel Predicts Prostate Cancer in Men with Recent Screening: Data from the European Randomized Study of Screening for Prostate Cancer, Rotterdam**
Andrew J. Vickers, Angel M. Cronin, Monique J. Roobol, Caroline J. Savage, Mari Peltola, Kim Pettersson, Peter T. Scardino, Fritz H. Schröder, and Hans Lilja
- 3240 | **HDAC5 and HDAC9 in Medulloblastoma: Novel Markers for Risk Stratification and Role in Tumor Cell Growth**
Till Milde, Ina Oehme, Andrey Korshunov, Annette Kopp-Schneider, Marc Remke, Paul Northcott, Hedwig E. Deubzer, Marco Lodrini, Michael D. Taylor, Andreas von Deimling, Stefan Pfister, and Olaf Witt
- 3253 | **Overexpression of p73 as a Tissue Marker for High-Risk Gastritis**
Gonzalo Carrasco, Jose Diaz, Jose R. Valbuena, Paulina Ibanez, Paz Rodriguez, Gabriela Araya, Carolina Rodriguez, Javiera Torres, Ignacio Duarte, Edmundo Aravena, Fernando Mena, Carlos Barrientos, and Alejandro H. Corvalan

CANCER THERAPY: CLINICAL

- 3260 | **Phase II Clinical and Pharmacokinetic Study of Plitidepsin 3-Hour Infusion Every Two Weeks Alone or with Dexamethasone in Relapsed and Refractory Multiple Myeloma**
María Victoria Mateos, Maria Teresa Cibeira, Paul G. Richardson, Felipe Prosper, Albert Oriol, Javier de la Rubia, Juan José Lahuerta, Ramón García-Sanz, Sonia Extremera, Sergio Szyldergemajn, Claudia Corrado, Harald Singer, Constantine S. Mitsiades, Kenneth C. Anderson, Joan Bladé, and Jesús San Miguel
- 3270 | **Biobehavioral, Immune, and Health Benefits following Recurrence for Psychological Intervention Participants**
Barbara L. Andersen, Lisa M. Thornton, Charles L. Shapiro, William B. Farrar, Bethany L. Mundy, Hae-Chung Yang, and William E. Carson III
- 3279 | ***AdCD40L* Immunogene Therapy for Bladder Carcinoma—The First Phase I/IIa Trial**
Per-Uno Malmström, Angelica S.I. Loskog, Camilla A. Lindqvist, Sara M. Mangsbo, Moa Fransson, Alkwin Wanders, Truls Gårdmark, and Thomas H. Tötterman
- 3288 | **Imatinib Mesylate as a Preoperative Therapy in Dermatofibrosarcoma: Results of a Multicenter Phase II Study on 25 Patients**
Delphine Kérob, Raphael Porcher, Olivier Vérola, Stephane Dalle, Eve Maubec, François Aubin, Michel D'Incan, Isaak Bodokh, Serge Boulinguez, Isabelle Madelaine-Chambrin, Anne Mathieu-Boue, Jean-Marie Servant, Eric de Kerviler, Anne Janin, Fabien Calvo, Florence Pedeutour, and Celeste Lebbe

ABOUT THE COVER

Early detection of gastric cancer requires risk assessment of premalignant conditions. The cover image shows a positive and negative representative immunostain of eight tissue markers (BRCA1, HSP90, EGFR, p73, STAT1, FHIT, p16INK4a and p53) and EBER-1 expression in tissue microarrays of early gastric cancer, nontumor adjacent mucosa, and chronic gastritis control cases, where p73 emerges and may have a potential role in the assessment of high-risk gastritis. Moreover, integration of these findings with histological features shows that overexpression of p73 is the most relevant finding. For further details, please see the article by Carrasco and colleagues on page 3253 of this issue.



Clinical Cancer Research

16 (12)

Clin Cancer Res 2010;16:3089-3295.

Updated version Access the most recent version of this article at:
<http://clincancerres.aacrjournals.org/content/16/12>

E-mail alerts [Sign up to receive free email-alerts](#) related to this article or journal.

Reprints and Subscriptions To order reprints of this article or to subscribe to the journal, contact the AACR Publications Department at pubs@aacr.org.

Permissions To request permission to re-use all or part of this article, use this link
<http://clincancerres.aacrjournals.org/content/16/12>.
Click on "Request Permissions" which will take you to the Copyright Clearance Center's (CCC) Rightslink site.