

## Highlights of This Issue 4491

### SPECIAL FEATURES

#### CCR Translations

- 4493 **Volumes to Learn: Advancing Therapeutics with Innovative Computed Tomography Image Data Analysis**  
Michael L. Maitland  
*See article p. 4647*

#### Molecular Pathways

- 4496 **X-linked Inhibitor of Apoptosis: A Chemoresistance Factor or a Hollow Promise**  
Hamid Kashkar
- 4503 **Targeting Cell Division Cycle 7 Kinase: A New Approach for Cancer Therapy**  
Alessia Montagnoli, Jürgen Moll, and Francesco Colotta

#### CCR Focus

- 4510 **DNA Repair: A Reinvigorated Therapeutic Target**  
Susan E. Bates
- 4511 **DNA Damage and Repair in Translational Oncology: An Overview**  
Eddie Reed
- 4517 **Poly (ADP-Ribose) Polymerase as a Novel Therapeutic Target in Cancer**  
Christina M. Annunziata and Joyce O'Shaughnessy
- 4527 **Perspective on the Pipeline of Drugs Being Developed with Modulation of DNA Damage as a Target**  
Ruth Plummer
- 4532 **Histone  $\gamma$ H2AX and Poly(ADP-Ribose) as Clinical Pharmacodynamic Biomarkers**  
Christophe E. Redon, Asako J. Nakamura, Yong-Wei Zhang, Jiuping (Jay) Ji, William M. Bonner, Robert J. Kinders, Ralph E. Parchment, James H. Doroshow, and Yves Pommier

- 4543 **Epigenetic Modifications in Double-Strand Break DNA Damage Signaling and Repair**  
Dorine Rossetto, Andrew W. Truman, Stephen J. Kron, and Jacques Côté
- 4553 **"Contextual" Synthetic Lethality and/or Loss of Heterozygosity: Tumor Hypoxia and Modification of DNA Repair**  
Norman Chan and Robert G. Bristow

### HUMAN CANCER BIOLOGY

- 4561 **Regulation of Excision Repair Cross-Complementation Group 1 by Snail Contributes to Cisplatin Resistance in Head and Neck Cancer**  
Dennis Shin-Shian Hsu, Hsin-Yi Lan, Chi-Hung Huang, Shyh-Kuan Tai, Shyue-Yih Chang, Tung-Lung Tsai, Cheng-Chi Chang, Cheng-Hwai Tzeng, Kou-Juey Wu, Jung-Yie Kao, and Muh-Hwa Yang
- 4572 **System-Level Analysis of Neuroblastoma Tumor-Initiating Cells Implicates AURKB as a Novel Drug Target for Neuroblastoma**  
Olena Morozova, Milijana Vojvodic, Natalie Grinshtein, Loen M. Hansford, Kim M. Blakely, Alexandra Maslova, Martin Hirst, Timothee Cezard, Ryan D. Morin, Richard Moore, Kristen M. Smith, Freda Miller, Paul Taylor, Nina Thiessen, Richard Varhol, Yongjun Zhao, Steven Jones, Jason Moffat, Thomas Kislinger, Michael F. Moran, David R. Kaplan, and Marco A. Marra

### CANCER THERAPY: PRECLINICAL

- 4583 **A Novel Chemoimmunomodulating Property of Docetaxel: Suppression of Myeloid-Derived Suppressor Cells in Tumor Bearers**  
Krithika N. Kodumudi, Karrune Woan, Danielle L. Gilvary, Eva Sahakian, Sheng Wei, and Julie Y. Djeu
- 4595 **Inhibitory Effect of Silibinin against Azoxy methane-Induced Colon Tumorigenesis in A/J Mice**  
Kameswaran Ravichandran, Balaiya Velmurugan, Mallikarjuna Gu, Rana P. Singh, and Rajesh Agarwal

---

**IMAGING, DIAGNOSIS, PROGNOSIS**

- 4607 **Assessment of Vaccine-Induced CD4 T Cell Responses to the 119-143 Immunodominant Region of the Tumor-Specific Antigen NY-ESO-1 Using DRB1\*0101 Tetramers**  
Maha Ayyoub, Pascale Pignon, Danijel Dojcinovic, Isabelle Raimbaud, Lloyd J. Old, Immanuel Luescher, and Danila Valmori
- 4616 **Impact of Serum Hepatocyte Growth Factor on Treatment Response to Epidermal Growth Factor Receptor Tyrosine Kinase Inhibitors in Patients with Non-Small Cell Lung Adenocarcinoma**  
Kazuo Kasahara, Tokuzo Arao, Kazuko Sakai, Kazuko Matsumoto, Asao Sakai, Hideharu Kimura, Takashi Sone, Atsushi Horiike, Makoto Nishio, Tatsuo Ohira, Norihiko Ikeda, Takeharu Yamanaka, Nagahiro Saijo, and Kazuto Nishio
- 4625 **Correlated Expression of CD47 and SIRPA in Bone Marrow and in Peripheral Blood Predicts Recurrence in Breast Cancer Patients**  
Makoto Nagahara, Koshi Mimori, Akemi Kataoka, Hideshi Ishii, Fumiaki Tanaka, Tsuyoshi Nakagawa, Takanobu Sato, Shinji Ono, Kenichi Sugihara, and Masaki Mori
- 4636 **Jumonji Domain Containing 1A Is a Novel Prognostic Marker for Colorectal Cancer: *In vivo* Identification from Hypoxic Tumor Cells**  
Mamoru Uemura, Hirofumi Yamamoto, Ichiro Takemasa, Koshi Mimori, Hideyuki Hemmi, Tsunekazu Mizushima, Masataka Ikeda, Mitsugu Sekimoto, Nariaki Matsuura, Yuichiro Doki, and Masaki Mori
- 4647 **A Pilot Study of Volume Measurement as a Method of Tumor Response Evaluation to Aid Biomarker Development**  
Binsheng Zhao, Geoffrey R. Oxnard, Chaya S. Moskowitz, Mark G. Kris, William Pao, Pingzhen Guo, Valerie M. Rusch, Marc Ladanyi, Naiyer A. Rizvi, and Lawrence H. Schwartz  
*See commentary p. 4493*

**CANCER THERAPY: CLINICAL**

- 4654 **Molecular Analysis of Non-Small Cell Lung Cancer Identifies Subsets with Different Sensitivity to Insulin-like Growth Factor I Receptor Inhibition**  
Antonio Gualberto, Marisa Dolled-Filhart, Mark Gustavson, Jason Christiansen, Yu-Fen Wang, Mary L. Hixon, Jennifer Reynolds, Sandra McDonald, Agnes Ang, David L. Rimm, Corey J. Langer, Johnetta Blakely, Linda Garland, Luis G. Paz-Ares, Daniel D. Karp, and Adrian V. Lee
- 4666 **An Open-Label, Phase I Study of the Polo-like Kinase-1 Inhibitor, BI 2536, in Patients with Advanced Solid Tumors**  
Ralf-Dieter Hofheinz, Salah-Eddin Al-Batran, Andreas Hochhaus, Elke Jäger, Volker L. Reichardt, Holger Fritsch, Dirk Trommeshauser, and Gerd Munzert
- 4675 **Expression of Receptors for Luteinizing Hormone-Releasing Hormone (LH-RH) in Prostate Cancers following Therapy with LH-RH Agonists**  
Stephen V. Liu, Andrew V. Schally, Debra Hawes, Shigang Xiong, Laden Fazli, Martin Gleave, Jie Cai, Susan Groshen, Frank Brands, Juergen Engel, and Jacek Pinski

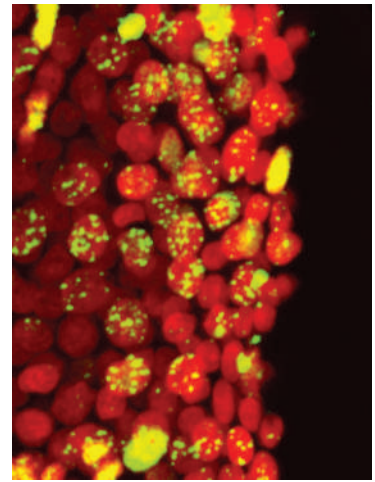
**CORRECTION**

- 4681 **Correction: A Phase I Pharmacologic Study of Necitumumab (IMC-11F8), a Fully Human IgG<sub>1</sub> Monoclonal Antibody Directed against EGFR in Patients with Advanced Solid Malignancies**

---

## ABOUT THE COVER

Clinical Use of  $\gamma$ H2AX and PAR: Image of an anagen hair bulb plucked from the scalp of a cancer patient 24 hours after drug infusion.  $\gamma$ H2AX antibody reveals DNA double-strand breaks (green foci) in cell nuclei (red). Imaged using a Nikon PCM 2000 laser scanning confocal microscope. For details, please see the article by Redon and colleagues on p. 4532 of this issue.



# Clinical Cancer Research

**16 (18)**

*Clin Cancer Res* 2010;16:4491-4681.

**Updated version** Access the most recent version of this article at:  
<http://clincancerres.aacrjournals.org/content/16/18>

**E-mail alerts** [Sign up to receive free email-alerts](#) related to this article or journal.

**Reprints and Subscriptions** To order reprints of this article or to subscribe to the journal, contact the AACR Publications Department at [pubs@aacr.org](mailto:pubs@aacr.org).

**Permissions** To request permission to re-use all or part of this article, use this link <http://clincancerres.aacrjournals.org/content/16/18>. Click on "Request Permissions" which will take you to the Copyright Clearance Center's (CCC) Rightslink site.