

Highlights of This Issue vii

SPECIAL FEATURES

CCR Translations

- 1085 **Finding the Right Dose for Cancer Therapeutics—Can We Do Better?**
Eric H. Rubin and Keaven M. Anderson
See article p. 1289

Molecular Pathways

- 1088 **Targeting the Cytoprotective Chaperone, Clusterin, for Treatment of Advanced Cancer**
Amina Zoubeidi, Kim Chi, and Martin Gleave
- 1094 **Targeting the RB-pathway in Cancer Therapy**
Erik S. Knudsen and Jean Y.J. Wang

Perspectives

- 1100 **A New Therapy Paradigm for Prostate Cancer Founded on Clinical Observations**
Eleni Efstathiou and Christopher J. Logothetis

HUMAN CANCER BIOLOGY

- 1108 **High Frequency of p53/MDM2/p14^{ARF} Pathway Abnormalities in Relapsed Neuroblastoma**
Jane Carr-Wilkinson, Kieran O'Toole, Katrina M. Wood, Christine C. Challen, Angela G. Baker, Julian R. Board, Laura Evans, Michael Cole, Nai-Kong V. Cheung, Joachim Boos, Gabriele Köhler, Ivo Leuschner, Andrew D.J. Pearson, John Lunec, and Deborah A. Tweddle
- 1119 **Frequent Downregulation of miR-34 Family in Human Ovarian Cancers**
David C. Corney, Chang-Il Hwang, Andres Matoso, Markus Vogt, Andrea Flesken-Nikitin, Andrew K. Godwin, Aparna A. Kamat, Anil K. Sood, Lora H. Ellenson, Heiko Hermeking, and Alexander Yu. Nikitin

1129 **Comprehensive MicroRNA Profiling for Head and Neck Squamous Cell Carcinomas**

Angela B.Y. Hui, Michelle Lenarduzzi, Tiffaney Krushel, Levi Waldron, Melania Pintilie, Wei Shi, Bayardo Perez-Ordonez, Igor Jurisica, Brian O'Sullivan, John Waldron, Pat Gullane, Bernard Cummings, and Fei-Fei Liu

1140 **X-Linked Ectodermal Dysplasia Receptor Is Downregulated in Breast Cancer via Promoter Methylation**

Vasu Punj, Hittu Matta, and Preet M. Chaudhary

CANCER THERAPY: PRECLINICAL

1149 **Dasatinib Inhibits the Growth of Molecularly Heterogeneous Myeloid Leukemias**

Bella S. Guerrouahen, Muneyoshi Futami, Christos Veklavas, Jukka Kanerva, Zakary L. Whichard, Kenechi Nwawka, Elisabeth G. Blanchard, Francis Y. Lee, Lisa J. Robinson, Robert Arceci, Steven M. Kornblau, Eric Wieder, Yvon E. Cayre, and Seth J. Corey

1159 **AZD8931, an Equipotent, Reversible Inhibitor of Signaling by Epidermal Growth Factor Receptor, ERBB2 (HER2), and ERBB3: A Unique Agent for Simultaneous ERBB Receptor Blockade in Cancer**

D. Mark Hickinson, Teresa Klinowska, Georgina Speake, John Vincent, Cath Trigwell, Judith Anderton, Sarah Beck, Gayle Marshall, Sara Davenport, Rowena Callis, Elizabeth Mills, Konstantina Grosios, Paul Smith, Bernard Barlaam, Robert W. Wilkinson, and Donald Ogilvie

1170 **Blockade of the Extracellular Signal-Regulated Kinase Pathway Enhances the Therapeutic Efficacy of Microtubule-Destabilizing Agents in Human Tumor Xenograft Models**

Kazushi Watanabe, Susumu Tanimura, Aya Uchiyama, Toshiaki Sakamoto, Takumi Kawabata, Kei-ichi Ozaki, and Michiaki Kohno

1179 **Low-Molecular-Weight Cyclin E Can Bypass Letrozole-Induced G₁ Arrest in Human Breast Cancer Cells and Tumors**

Said Akli, Tuyen Bui, Hannah Wingate, Anna Biernacka, Stacy Moulder, Susan L. Tucker, Kelly K. Hunt, and Khandan Keyomarsi

1191 **Anti-Transforming Growth Factor β Receptor II Antibody Has Therapeutic Efficacy against Primary Tumor Growth and Metastasis through Multieffects on Cancer, Stroma, and Immune Cells**

Zhaojing Zhong, Kyla Driscoll Carroll, Desiree Policarpio, Carla Osborn, Michael Gregory, Rajiv Bassi, Xenia Jimenez, Marie Prewett, Gregory Liebisch, Kris Persaud, Douglas Burtrum, Su Wang, David Surguladze, Stanley Ng, Heather Griffith, Paul Balderes, Jacqueline Doody, Jonathan D. Schwartz, Hagop Youssoufian, Eric K. Rowinsky, Dale L. Ludwig, Larry Witte, Zhenping Zhu, and Yan Wu

1236 **A 3'-Untranslated Region Polymorphism in *IGF1* Predicts Survival of Non-Small Cell Lung Cancer in a Chinese Population**

Mingfeng Zhang, Zhibin Hu, Jinlin Huang, Yongqian Shu, Juncheng Dai, Guangfu Jin, Rong Tang, Jing Dong, Yijiang Chen, Lin Xu, Xinen Huang, and Hongbing Shen

1245 **Low Levels of Phosphorylated Epidermal Growth Factor Receptor in Nonmalignant and Malignant Prostate Tissue Predict Favorable Outcome in Prostate Cancer Patients**

Peter Hammarsten, Amar Karalija, Andreas Josefsson, Stina Häggström Rudolfsson, Pernilla Wikström, Lars Egevad, Torvald Granfors, Pär Stattin, and Anders Bergh

IMAGING, DIAGNOSIS, PROGNOSIS

1206 **MutS Homologue 2 and the Long-term Benefit of Adjuvant Chemotherapy in Lung Cancer**
Nermine S. Kamal, Jean-Charles Soria, Jean Mendiboure, David Planchard, Ken A. Olaussen, Vanessa Rousseau, Helmut Popper, Robert Pirker, Pascale Bertrand, Ariane Dunant, Thierry Le Chevalier, Martin Filipits, and Pierre Fouret for the International Adjuvant Lung Trial-Bio Investigators

1216 **Metastatic Renal Cell Carcinoma Treated with Sunitinib: Early Evaluation of Treatment Response Using Dynamic Contrast-Enhanced Ultrasonography**

Nathalie Lassau, Serge Koscielny, Laurence Albiges, Linda Chami, Baya Benatsou, Mohamed Chebil, Alain Roche, and Bernard J. Escudier

1226 **Tobacco Use in Human Papillomavirus-Positive Advanced Oropharynx Cancer Patients Related to Increased Risk of Distant Metastases and Tumor Recurrence**

Jessica H. Maxwell, Bhavna Kumar, Felix Y. Feng, Francis P. Worden, Julia S. Lee, Avraham Eisbruch, Gregory T. Wolf, Mark E. Prince, Jeffrey S. Moyer, Theodoros N. Teknos, Douglas B. Chepeha, Jonathan B. McHugh, Susan G. Urba, Jay Stoerker, Heather M. Walline, David M. Kurnit, Kitrina G. Cordell, Samantha J. Davis, Preston D. Ward, Carol R. Bradford, and Thomas E. Carey

1256 **A Phase I Safety and Pharmacokinetic Study of the Death Receptor 5 Agonistic Antibody PRO95780 in Patients with Advanced Malignancies**

D. Ross Camidge, Roy S. Herbst, Michael S. Gordon, S. Gail Eckhardt, Razelle Kurzrock, Blythe Durbin, Josephine Ing, Tanyifor M. Tohny, Jason Sager, Avi Ashkenazi, Gordon Bray, and David Mendelson

1264 **Tipifarnib Plus Tamoxifen in Tamoxifen-Resistant Metastatic Breast Cancer: A Negative Phase II and Screening of Potential Therapeutic Markers by Proteomic Analysis**

Florence Dalenc, Sophie F. Doisneau-Sixou, Ben C. Allal, Sabrina Marsili, Valérie Lauwers-Cances, Karima Chaoui, Odile Schiltz, Bernard Monsarrat, Thomas Filleron, Nicole Renée, Emilie Malissein, Elise Meunier, Gilles Favre, and Henri Roché

1272 **The Predictive Value of HLA Class I Tumor Cell Expression and Presence of Intratumoral Tregs for Chemotherapy in Patients with Early Breast Cancer**

Esther M. de Kruijff, Johanna G.H. van Nes, Anita Sajet, Quirijn R.J.G. Tummers, Hein Putter, Susanne Osanto, Frank M. Speetjens, Vincent T.H.B.M. Smit, Gerrit Jan Liefers, Cornelis J.H. van de Velde, and Peter J.K. Kuppen

CANCER THERAPY: CLINICAL

- 1281 **Chromosome 17 Polysomy without Human Epidermal Growth Factor Receptor 2 Amplification Does Not Predict Response to Lapatinib Plus Paclitaxel Compared with Paclitaxel in Metastatic Breast Cancer**
Leona Downey, Robert B. Livingston, Maria Koehler, Michael Arbushites, Lisa Williams, Angela Santiago, Roberta Guzman, Ivonne Villalobos, Angelo Di Leo, and Michael F. Press
- 1289 **Phase I Oncology Studies: Evidence That in the Era of Targeted Therapies Patients on Lower Doses Do Not Fare Worse**
Rajul K. Jain, J. Jack Lee, David Hong, Maurie Markman, Jing Gong, Aung Naing, Jennifer Wheler, and Razelle Kurzrock
See commentary p. 1085
- 1298 **Phase I Trial of Pelvic Radiation, Weekly Cisplatin, and 3-Aminopyridine-2-Carboxaldehyde Thiosemicarbazone (3-AP, NSC #663249) for Locally Advanced Cervical Cancer**
Charles A. Kunos, Steven Waggoner, Vivian von Gruenigen, Elisa Eldermire, John Pink, Afshin Dowlati, and Timothy J. Kinsella
- 1307 **Randomized Phase III Trial of Gefitinib versus Docetaxel in Non–Small Cell Lung Cancer Patients Who Have Previously Received Platinum-Based Chemotherapy**
Dae Ho Lee, Keunchil Park, Joo Hang Kim, Jong-Seok Lee, Sang Won Shin, Jin-Hyoun Kang, Myung-Ju Ahn, Jin Seok Ahn, Cheolwon Suh, and Sang-We Kim
- 1315 **Phase I Clinical and Magnetic Resonance Imaging Study of the Vascular Agent NGR-hTNF in Patients with Advanced Cancers (European Organization for Research and Treatment of Cancer Study 16041)**
Hanneke W.M. van Laarhoven, Walter Fiedler, Ingrid M.E. Desar, Jack J.A. van Asten, Sandrine Marréaud, Denis Lacombe, Anne-Sophie Govaerts, Jan Bogaerts, Peter Lasch, Johanna N.H. Timmer-Bonte, Antonio Lambiase, Claudio Bordignon, Cornelis J.A. Punt, Arend Heerschap, and Carla M.L. van Herpen
- 1324 **Potential Clinical Significance of a Plasma-Based KRAS Mutation Analysis in Patients with Advanced Non–Small Cell Lung Cancer**
Shuhang Wang, Tongtong An, Jie Wang, Jun Zhao, Zhijie Wang, Minglei Zhuo, Hua Bai, Lu Yang, Yan Zhang, Xin Wang, Jianchun Duan, Yuyan Wang, Qingzhi Guo, and Meina Wu

SUSCEPTIBILITY AND PREVENTION

- 1331 **Smoking and Colorectal Cancer in Lynch Syndrome: Results from the Colon Cancer Family Registry and The University of Texas M.D. Anderson Cancer Center**
Mala Pande, Patrick M. Lynch, John L. Hopper, Mark A. Jenkins, Steve Gallinger, Robert W. Haile, Loic LeMarchand, Noralane M. Lindor, Peter T. Campbell, Polly A. Newcomb, John D. Potter, John A. Baron, Marsha L. Frazier, and Christopher I. Amos

LETTERS TO THE EDITOR

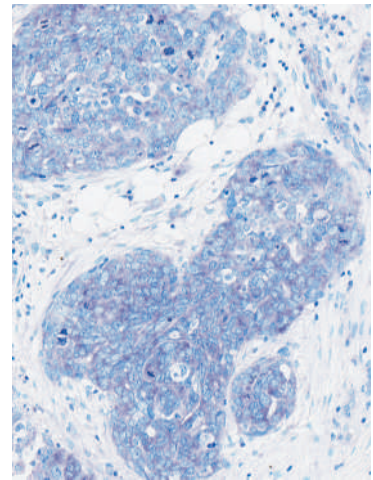
- 1340 **Studies of TMPRSS2-ERG Gene Fusions in Diagnostic Trans-Rectal Prostate Biopsies**
Gerhardt Attard, Johann S. de Bono, Jeremy Clark, and Colin S. Cooper
- 1340 **In Response**
Martin G. Sanda
- 1341 **Vascular Endothelial Growth Factor Concentration as a Predictive Marker: Ready for Primetime?**
Peter A. Kavsak, Hal Hirte, and Sebastien J. Hotte
- 1341 **In Response**
Emer O. Hanrahan, Anderson J. Ryan, and John V. Heymach

CORRECTIONS

- 1343 **Correction: A First-in-Man Phase I and Pharmacokinetic Study on CHR-2797 (Tosedostat), an Inhibitor of M1 Aminopeptidases, in Patients with Advanced Solid Tumors**
- 1343 **Correction: The Novel Expanded Porphyrin, Motexafin Gadolinium, Combined with [⁹⁰Y] Ibritumomab Tiuxetan for Relapsed/Refractory Non-Hodgkin's Lymphoma: Preclinical Findings and Results of a Phase I Trial**

ABOUT THE COVER

Expression of the miR-34 family was found to be frequently reduced in human epithelial ovarian cancer, particularly so in tumors with *p53* mutations. The figure shows miR-34a expression (dark blue) in ovarian serous adenocarcinoma as determined by *in situ* hybridization with locked nucleic acid–modified probes. Immunohistochemistry in serial sections revealed significant inverse correlation between miR-34a and its target MET, an oncogene commonly overexpressed in advanced stages of cancer. For details, see the article by Corney and colleagues on page 1119 of this issue.



Clinical Cancer Research

16 (4)

Clin Cancer Res 2010;16:vii-1343.

Updated version Access the most recent version of this article at:
<http://clincancerres.aacrjournals.org/content/16/4>

E-mail alerts [Sign up to receive free email-alerts](#) related to this article or journal.

Reprints and Subscriptions To order reprints of this article or to subscribe to the journal, contact the AACR Publications Department at pubs@aacr.org.

Permissions To request permission to re-use all or part of this article, use this link <http://clincancerres.aacrjournals.org/content/16/4>. Click on "Request Permissions" which will take you to the Copyright Clearance Center's (CCC) Rightslink site.