

Highlights of This Issue 1693

SPECIAL FEATURES

Molecular Pathways

1695 **Metformin: A Therapeutic Opportunity in Breast Cancer**

Ana M. Gonzalez-Angulo, and Funda Meric-Bernstam

1701 **Death Receptor Agonists as a Targeted Therapy for Cancer**

Jeffrey Wiezorek, Pamela Holland, and Jonathan Graves

CCR Special Focus

1709 **Phase I Clinical Trials: Overcoming Barriers**

Susan E. Bates

1710 **An Overview of the Optimal Planning, Design, and Conduct of Phase I Studies of New Therapeutics**

Patricia M. LoRusso, Scott A. Boerner, and Lesley Seymour

1719 **Information Needed to Conduct First-in-Human Oncology Trials in the United States: A View from a Former FDA Medical Reviewer**

Adrian M. Senderowicz

1726 **Approaches to Phase 1 Clinical Trial Design Focused on Safety, Efficiency, and Selected Patient Populations: A Report from the Clinical Trial Design Task Force of the National Cancer Institute Investigational Drug Steering Committee**

S. Percy Ivy, Lillian L. Siu, Elizabeth Garrett-Mayer, and Larry Rubinstein

1737 **Performing Phase I Clinical Trials of Anticancer Agents: Perspectives from within the European Union and Japan**

Martin D. Forster, Nagahiro Saijo, Lesley Seymour, and Hilary Calvert

1745 **Guidelines for the Development and Incorporation of Biomarker Studies in Early Clinical Trials of Novel Agents**

Janet E. Dancey, Kevin K. Dobbin, Susan Groshen, J. Milburn Jessup, Andrew H. Hruszkewycz, Maria Koehler, Ralph Parchment, Mark J. Ratain, Lalitha K. Shankar, Walter M. Stadler, Lawrence D. True, Amy Gravell, and Michael R. Grever On behalf of the Biomarkers Task Force of the NCI Investigational Drug Steering Committee

1756 **GCP Data Quality for Early Clinical Development**

Edwin P. Rock, Vernetta J. Molloy, and Jeffrey S. Humphrey

1764 **The Design of Phase II Clinical Trials Testing Cancer Therapeutics: Consensus Recommendations from the Clinical Trial Design Task Force of the National Cancer Institute Investigational Drug Steering Committee**

Lesley Seymour, S. Percy Ivy, Daniel Sargent, David Spriggs, Laurence Baker, Larry Rubinstein, Mark J. Ratain, Michael Le Blanc, David Stewart, John Crowley, Susan Groshen, Jeffrey S. Humphrey, Pamela West, and Donald Berry

Review

1771 **New Developments in Tyrosine Kinase Inhibitor Therapy for Newly Diagnosed Chronic Myeloid Leukemia**

Philipp le Coutre, Michaela Schwarz, and Theo D. Kim

HUMAN CANCER BIOLOGY

1781 **Overexpression of Smoothed Activates the Sonic Hedgehog Signaling Pathway in Pancreatic Cancer-Associated Fibroblasts**

Kimberly Walter, Noriyuki Omura, Seung-Mo Hong, Margaret Griffith, Audrey Vincent, Michael Borges, and Michael Goggins

1790 **Intratumoral Estrogen Disposition in Breast Cancer**
Ben P. Haynes, Anne Hege Straume, Jürgen Geisler, Roger A'Hern, Hildegunn Helle, Ian E. Smith, Per E. Lønning, and Mitch Dowsett

CANCER THERAPY: PRECLINICAL

1802 **PEA-15 Inhibits Tumorigenesis in an MDA-MB-468 Triple-Negative Breast Cancer Xenograft Model through Increased Cytoplasmic Localization of Activated Extracellular Signal-Regulated Kinase**
Chandra Bartholomeusz, Ana M. Gonzalez-Angulo, Anna Kazansky, Savitri Krishnamurthy, Ping Liu, Linda X. H. Yuan, Fumiyuki Yamasaki, Shuying Liu, Naoki Hayashi, Dongwei Zhang, Francisco J. Esteva, Gabriel N. Hortobagyi, and Naoto T. Ueno

1812 **Anti-inflammatory Triterpenoid Blocks Immune Suppressive Function of MDSCs and Improves Immune Response in Cancer**
Srinivas Nagaraj, Je-In Youn, Hannah Weber, Cristina Iclozan, Lily Lu, Matthew J. Cotter, Colin Meyer, Carlos R. Becerra, Mayer Fishman, Scott Antonia, Michael B. Sporn, Karen T. Liby, Bhupendra Rawal, Ji-Hyun Lee, and Dmitry I. Gabrilovich

1824 **The Oncogene DEK Promotes Leukemic Cell Survival and Is Downregulated by both Nutlin-3 and Chlorambucil in B-Chronic Lymphocytic Leukemic Cells**
Paola Secchiero, Rebecca Voltan, Maria Grazia di Iasio, Elisabetta Melloni, Mario Tiribelli, and Giorgio Zauli

1834 **Targeted Inhibition of Inducible Nitric Oxide Synthase Inhibits Growth of Human Melanoma *In vivo* and Synergizes with Chemotherapy**
Andrew G. Sikora, Alexander Gelbard, Michael A. Davies, Daisuke Sano, Suhendan Ekmekcioglu, John Kwon, Yared Hailemichael, Padmini Jayaraman, Jeffrey N. Myers, Elizabeth A. Grimm, and Willem W. Overwijk

IMAGING, DIAGNOSIS, PROGNOSIS

1845 **The Role of the CpG Island Methylator Phenotype in Colorectal Cancer Prognosis Depends on Microsatellite Instability Screening Status**
Anna M. Dahlin, Richard Palmqvist, Maria L. Henriksson, Maria Jacobsson, Vincy Eklöf, Jörgen Rutegård, Åke Öberg, and Bethany R. Van Guelpen

1856 **Homozygous Deletion Mapping in Myeloma Samples Identifies Genes and an Expression Signature Relevant to Pathogenesis and Outcome**
Nicholas J. Dickens, Brian A. Walker, Paola E. Leone, David C. Johnson, José L. Brito, Athanasia Zeisig, Matthew W. Jenner, Kevin D. Boyd, David Gonzalez, Walter M. Gregory, Fiona M. Ross, Faith E. Davies, and Gareth J. Morgan

1865 **Highly Phosphorylated FOXO3A Is an Adverse Prognostic Factor in Acute Myeloid Leukemia**
Steven M. Kornblau, Neera Singh, YiHua Qiu, Wenjing Chen, Nianxiang Zhang, and Kevin R. Coombes

1875 **Value of Magnetic Resonance Spectroscopy Imaging and Dynamic Contrast-Enhanced Imaging for Detecting Prostate Cancer Foci in Men With Prior Negative Biopsy**
Alessandro Sciarra, Valeria Panebianco, Mauro Ciccariello, Stefano Salciccia, Susanna Cattarino, Danilo Lisi, Alessandro Gentilucci, Andrea Alfarone, Silvia Bernardo, Roberto Passariello, and Vincenzo Gentile

1884 **Obesity Is an Independent Prognostic Variable in Colon Cancer Survivors**
Frank A. Sinicrope, Nathan R. Foster, Daniel J. Sargent, Michael J. O'Connell, and Cathryn Rankin

CANCER THERAPY: CLINICAL

1894 **Anti-CD22 Immunotoxin RFB4(dsFv)-PE38 (BL22) for CD22-Positive Hematologic Malignancies of Childhood: Preclinical Studies and Phase I Clinical Trial**
Alan S. Wayne, Robert J. Kreitman, Harry W. Findley, Glen Lew, Cynthia Delbrook, Seth M. Steinberg, Maryalice Stetler-Stevenson, David J. FitzGerald, and Ira Pastan

- 1904 **Phase II, Randomized Trial to Compare Anastrozole Combined with Gefitinib or Placebo in Postmenopausal Women with Hormone Receptor–Positive Metastatic Breast Cancer**
Massimo Cristofanilli, Vicente Valero, Aroop Mangalik, Melanie Royce, Ian Rabinowitz, Francis P. Arena, Joan F. Kroener, Elizabeth Curcio, Claire Watkins, Sarah Bacus, Elsa M. Cora, Elizabeth Anderson, and Patrick J. Magill
- 1915 **A Phase I Pharmacologic Study of Necitumumab (IMC-11F8), a Fully Human IgG₁ Monoclonal Antibody Directed Against EGFR in Patients with Advanced Solid Malignancies**
Bart Kuenen, Petronella O. Witteveen, Rita Ruijter, Giuseppe Giaccone, Aruna Dontabhaktuni, Floyd Fox, Terry Katz, Hagop Youssoufian, Junming Zhu, Eric K. Rowinsky, and Emile E. Voest
- 1924 **Phase I Pharmacokinetic and Pharmacodynamic Study of the Oral MAPK/ERK Kinase Inhibitor PD-0325901 in Patients with Advanced Cancers**
Patricia M. LoRusso, Smitha S. Krishnamurthi, John J. Rinehart, Lisle M. Nabell, Lisa Malburg, Paul B. Chapman, Samuel E. DePrimo, Steven Bentivegna, Keith D. Wilner, Weiwei Tan, and Alejandro D. Ricart
- 1938 **Randomized Phase II Multicenter Trial of Two Schedules of Lapatinib as First- or Second-Line Monotherapy in Patients with Advanced or Metastatic Non–Small Cell Lung Cancer**
Helen J. Ross, George R. Blumenschein, Jr., Joseph Aisner, Nevena Damjanov, Afshin Dowlati, Jennifer Garst, James R. Rigas, Michael Smylie, Habib Hassani, Kimberly E. Allen, Lance Leopold, Tal Z. Zaks, and Frances A. Shepherd

SUSCEPTIBILITY AND PREVENTION

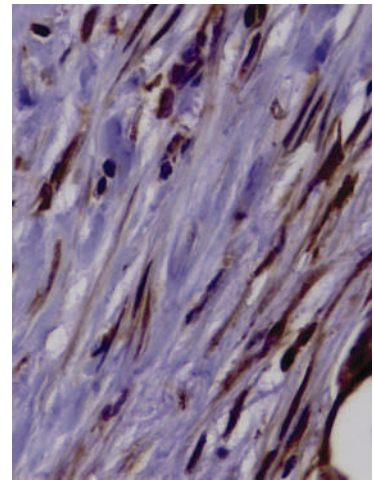
- 1950 **Mesalazine Reduces Mutations in Transforming Growth Factor β Receptor II and Activin Type II Receptor by Improvement of Replication Fidelity in Mononucleotide Repeats**
Christoph Campregher, Clemens Honeder, Heekyung Chung, John M. Carethers, and Christoph Gasche
- 1957 **A High Proportion of DNA Variants of BRCA1 and BRCA2 Is Associated with Aberrant Splicing in Breast/Ovarian Cancer Patients**
David J. Sanz, Alberto Acedo, Mar Infante, Mercedes Durán, Lucía Pérez-Cabornero, Eva Esteban-Cardenosa, Enrique Lastra, Franco Pagani, Cristina Miner, and Eladio A. Velasco

LETTERS TO THE EDITOR

- 1968 **Correlation of Segmented Metabolic Tumor Volume with Outcome - Letter**
Esther G.C. Troost, Dominic A.X. Schinagl, Johan Bussink, Johannes H.A.M. Kaanders, Wim J.G. Oyen, and Otto C. Boerman
- 1968 **Correlation of Segmented Metabolic Tumor Volume with Outcome - Response**
Man Ki Chung, Chung-Hwan Baek, and Joon Young Choi,

ABOUT THE COVER

Human pancreatic cancer-associated fibroblasts (CAFs) overexpress the Hedgehog receptor *SMO*. Here, immunohistochemical labeling highlights overexpression of Smo protein in a human primary pancreatic adenocarcinoma. Strong Smo expression is detected in stromal fibroblasts adjacent to pancreatic cancer cells. For details, see the article by Walter and colleagues on page 1781 of this issue.



Clinical Cancer Research

16 (6)

Clin Cancer Res 2010;16:1693-1969.

Updated version Access the most recent version of this article at:
<http://clincancerres.aacrjournals.org/content/16/6>

E-mail alerts [Sign up to receive free email-alerts](#) related to this article or journal.

Reprints and Subscriptions To order reprints of this article or to subscribe to the journal, contact the AACR Publications Department at pubs@aacr.org.

Permissions To request permission to re-use all or part of this article, use this link <http://clincancerres.aacrjournals.org/content/16/6>. Click on "Request Permissions" which will take you to the Copyright Clearance Center's (CCC) Rightslink site.