

## Highlights of This Issue 2227

### SPECIAL FEATURES

#### Molecular Pathways

- 2229 | **Signaling From the Golgi: Mechanisms and Models for Golgi Phosphoprotein 3-Mediated Oncogenesis**  
Kenneth L. Scott and Lynda Chin

- 2275 | **The EPHB6 Receptor Tyrosine Kinase Is a Metastasis Suppressor That Is Frequently Silenced by Promoter DNA Hypermethylation in Non-Small Cell Lung Cancer**  
Jun Yu, Etmar Bulk, Ping Ji, Antje Hascher, Moying Tang, Ralf Metzger, Alessandro Marra, Hubert Serve, Wolfgang E. Berdel, Rainer Wiewroth, Steffen Koschmieder, and Carsten Müller-Tidow

### HUMAN CANCER BIOLOGY

- 2235 | **Synergistic Antitumor Effect of the Activated PPAR $\gamma$  and Retinoid Receptors on Human Osteosarcoma**  
Bai-Cheng He, Liang Chen, Guo-Wei Zuo, Wenli Zhang, Yang Bi, Jiayi Huang, Yi Wang, Wei Jiang, Qing Luo, Qiong Shi, Bing-Qiang Zhang, Bo Liu, Xia Lei, Jinyong Luo, Xiaoji Luo, Eric R. Wagner, Stephanie H. Kim, Connie J. He, Yawen Hu, Jikun Shen, Qixin Zhou, Farbod Rastegar, Zhong-Liang Deng, Hue H. Luu, Tong-Chuan He, and Rex C. Haydon
- 2246 | **RAS Mutations Contribute to Evolution of Chronic Myelomonocytic Leukemia to the Proliferative Variant**  
Clara Ricci, Elisa Fermo, Stefania Corti, Mauro Molteni, Alessio Faricciotti, Agostino Cortelezzi, Giorgio Lambertenghi Delilieri, Miloslav Beran, and Francesco Onida
- 2257 | **Crosstalk between Mast Cells and Pancreatic Cancer Cells Contributes to Pancreatic Tumor Progression**  
Matthew J. Strouch, Eric C. Cheon, Mohammad R. Salabat, Seth B. Krantz, Elias Gounaris, Laleh G. Melstrom, Surabhi Dangi-Garimella, Edward Wang, Hidayatullah G. Munshi, Khashayarsha Khazaie, and David J. Brentrem
- 2266 | **Genetic and Expression Analysis of HER-2 and EGFR Genes in Salivary Duct Carcinoma: Empirical and Therapeutic Significance**  
Michelle D. Williams, Dianna B. Roberts, Merrill S. Kies, Li Mao, Randal S. Weber, and Adel K. El-Naggar

### CANCER THERAPY: PRECLINICAL

- 2284 | **Selective Cytotoxicity to HER2-Positive Tumor Cells by a Recombinant e23sFv-TD-tBID Protein Containing a Furin Cleavage Sequence**  
Fang Wang, Jing Ren, Xiu-Chun Qiu, Li-Feng Wang, Qing Zhu, Ying-Qi Zhang, Yi Huan, Yan-Ling Meng, Li-Bo Yao, Si-Yi Chen, Yan-Ming Xu, and An-Gang Yang
- 2295 | **CK2 Modulation of NF- $\kappa$ B, TP53, and the Malignant Phenotype in Head and Neck Cancer by Anti-CK2 Oligonucleotides *In vitro* or *In vivo* via Sub-50-nm Nanocapsules**  
Matthew S. Brown, Oumou T. Diallo, Michael Hu, Reza Ehsanian, Xinping Yang, Pattatheyl Arun, Hai Lu, Vicci Korman, Gretchen Unger, Khalil Ahmed, Carter Van Waes, and Zhong Chen
- 2308 | **Targeted Cytosine Deaminase-Uracil Phosphoribosyl Transferase Suicide Gene Therapy Induces Small Cell Lung Cancer-Specific Cytotoxicity and Tumor Growth Delay**  
Camilla L. Christensen, Torben Gjetting, Thomas T. Poulsen, Frederik Cramer, Jack A. Roth, and Hans S. Poulsen
- 2320 | **Histone Deacetylase Inhibitors and 15-Deoxy- $\Delta^{12,14}$ -Prostaglandin J<sub>2</sub> Synergistically Induce Apoptosis**  
Makoto Koyama, Yasuyuki Izutani, Ahmed E. Goda, Taka-aki Matsui, Mano Horinaka, Mitsuhiro Tomosugi, Jun Fujiwara, Yoshitaka Nakamura, Miki Wakada, Shingo Yogosawa, Yoshihiro Sowa, and Toshiyuki Sakai

- 2333 **T-Cell Receptor Gene–Modified T Cells with Shared Renal Cell Carcinoma Specificity for Adoptive T-Cell Therapy**  
Matthias Leisegang, Adriana Turqueti-Neves, Boris Engels, Thomas Blankenstein, Dolores J. Schendel, Wolfgang Uckert, and Elfriede Noessner
- 2344 **Development of a Functional Assay for Homologous Recombination Status in Primary Cultures of Epithelial Ovarian Tumor and Correlation with Sensitivity to Poly(ADP-Ribose) Polymerase Inhibitors**  
Asima Mukhopadhyay, Ahmed Elattar, Aiste Cerbinskaite, Sarah J. Wilkinson, Yvette Drew, Suzanne Kyle, Gerrit Los, Zdenek Hostomsky, Richard J. Edmondson, and Nicola J. Curtin
- 2352 **Establishment and Characterization of a Panel of Human Uveal Melanoma Xenografts Derived from Primary and/or Metastatic Tumors**  
Fariba Némati, Xavier Sastre-Garau, Cécile Laurent, Jérôme Couturier, Pascale Mariani, Laurence Desjardins, Sophie Piperno-Neumann, Olivier Lantz, Bernard Asselain, Corine Plancher, Delphine Robert, Isabelle Péguillet, Marie-Hélène Donnadiou, Ahmed Dahmani, Marie-Andrée Bessard, David Gentien, Cécile Reyes, Simon Saule, Emmanuel Barillot, Sergio Roman-Roman, and Didier Decaudin
- 2363 **Preclinical Evidence that Use of TRAIL in Ewing's Sarcoma and Osteosarcoma Therapy Inhibits Tumor Growth, Prevents Osteolysis, and Increases Animal Survival**  
Gaëlle Picarda, François Lamoureux, Loïc Geffroy, Pascal Delepine, Tristan Montier, Karine Laud, Franck Tirode, Olivier Delattre, Dominique Heymann, and Françoise Rédini
- 2383 **Cyclooxygenase-2 Genetic Variants Are Associated with Survival in Unresectable Locally Advanced Non–Small Cell Lung Cancer**  
Nan Bi, Ming Yang, Li Zhang, Xiabin Chen, Wei Ji, Guangfei Ou, Dongxin Lin, and Luhua Wang
- 2391 **ERBB2 and TOP2A in Breast Cancer: A Comprehensive Analysis of Gene Amplification, RNA Levels, and Protein Expression and Their Influence on Prognosis and Prediction**  
Jan C. Brase, Marcus Schmidt, Thomas Fischbach, Holger Sültmann, Hans Bojar, Heinz Koelbl, Birte Hellwig, Jörg Rahnenführer, Jan G. Hengstler, and Mathias Gehrman
- 2402 **Serial Monitoring of Circulating Tumor Cells Predicts Outcome of Induction Biochemotherapy plus Maintenance Biotherapy for Metastatic Melanoma**  
Kazuo Koyanagi, Steven J. O'Day, Peter Boasberg, Michael B. Atkins, He-Jing Wang, Rene Gonzalez, Karl Lewis, John A. Thompson, Clay M. Anderson, Jose Lutzky, Thomas T. Amatruda, Evan Hersh, Jon Richards, Jeffrey S. Weber, and Dave S.B. Hoon
- 2409 **A Novel Prognostic Model for Malignant Mesothelioma Incorporating Quantitative FDG-PET Imaging with Clinical Parameters**  
Anna K. Nowak, Roslyn J. Francis, Michael J. Phillips, Michael J. Millward, Agatha A. van der Schaaf, Jan Boucek, Arthur W. Musk, Melanie J. McCoy, Amanda Segal, Peter Robins, and Michael J. Byrne
- 2418 **Long Interspersed Nuclear Element 1 Hypomethylation Is a Marker of Poor Prognosis in Stage IA Non–Small Cell Lung Cancer**  
Kenichiro Saito, Kazuyuki Kawakami, Isao Matsumoto, Makoto Oda, Go Watanabe, and Toshinari Minamoto

## IMAGING, DIAGNOSIS, PROGNOSIS

- 2375 **Aprataxin Tumor Levels Predict Response of Colorectal Cancer Patients to Irinotecan-based Treatment**  
Higinio Dopeso, Silvia Mateo-Lozano, Elena Elez, Stefania Landolfi, Francisco Javier Ramos Pascual, Javier Hernández-Losa, Rocco Mazzolini, Paulo Rodrigues, Sarah Bazzocco, Maria Josep Carreras, Eloy Espín, Manel Armengol, Andrew J. Wilson, John M. Mariadason, Santiago Ramon y Cajal, Josep Tabernero, Simo Schwartz, Jr., and Diego Arango
- 2427 **Nuclear Localization of Signal Transducer and Activator of Transcription 3 in Head and Neck Squamous Cell Carcinoma Is Associated with a Better Prognosis**  
Eirini Pectasides, Ann-Marie Egloff, Clarence Sasaki, Panteleimon Kountourakis, Barbara Burtneess, George Fountzilias, Urania Dafni, Thomas Zaramboukas, Theodoros Rampias, David Rimm, Jennifer Grandis, and Amanda Psyrris

---

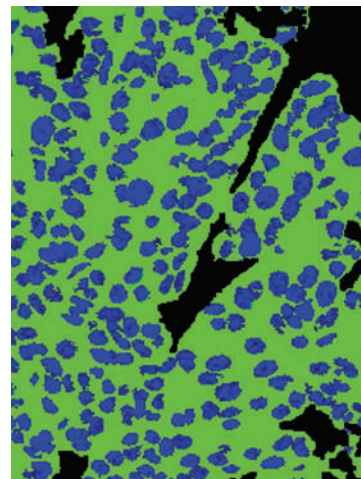
## CANCER THERAPY: CLINICAL

- 2435 **Expression of p21 Protein Predicts Clinical Outcome in DLBCL Patients Older than 60 Years Treated with R-CHOP but not CHOP: A Prospective ECOG and Southwest Oncology Group Correlative Study on E4494**  
Jane N. Winter, Shuli Li, Vikas Aurora, Daina Variakojis, Beverly Nelson, Maryla Krajewska, Lijun Zhang, Thomas M. Habermann, Richard I. Fisher, William R. Macon, Mukesh Chhanabhai, Raymond E. Felgar, Eric D. Hsi, L. Jeffrey Medeiros, James K. Weick, Edie A. Weller, Ari Melnick, John C. Reed, Sandra J. Horning, and Randy D. Gascoyne
- 2443 **Survival of Patients with Newly Diagnosed Glioblastoma Treated with Radiation and Temozolomide in Research Studies in the United States**  
Stuart A. Grossman, Xiaobu Ye, Steven Piantadosi, Serena Desideri, Louis B. Nabors, Myrna Rosenfeld, and Joy Fisher for the NABTT CNS Consortium
- 2450 **A Phase II Study of PD-0325901, an Oral MEK Inhibitor, in Previously Treated Patients with Advanced Non-Small Cell Lung Cancer**  
Eric B. Haura, Alejandro D. Ricart, Timothy G. Larson, Philip J. Stella, Lyudmila Bazhenova, Vincent A. Miller, Roger B. Cohen, Peter D. Eisenberg, Paulina Selaru, Keith D. Wilner, and Shirish M. Gadgil
- 2458 **A Phase I Study of Weekly R1507, A Human Monoclonal Antibody Insulin-like Growth Factor-I Receptor Antagonist, in Patients with Advanced Solid Tumors**  
Razelle Kurzrock, Amita Patnaik, Joseph Aisner, Terri Warren, Stephen Leong, Robert Benjamin, S. Gail Eckhardt, Joseph E. Eid, Gerard Greig, Kai Habben, Cinara D. McCarthy, and Lia Gore
- 2466 **Phase I/II Study of Inhaled Doxorubicin Combined with Platinum-Based Therapy for Advanced Non-Small Cell Lung Cancer**  
Gregory A. Otterson, Miguel A. Villalona-Calero, William Hicks, Xueliang Pan, John A. Ellerton, Scott N. Gettinger, and John R. Murren
- 2474 **Pharmacodynamic Trial of Nimotuzumab in Unresectable Squamous Cell Carcinoma of the Head and Neck: A SENDO Foundation Study**  
Federico Rojo, Elías Gracias, Nadia Villena, Teresa Cruz, Josep Maria Corominas, Irene Corradino, Mercedes Cedeño, Clara Campas, Marta Osorio, Normando Iznaga, Beatriz Bellosillo, Ana Rovira, Silvia Marsoni, Pere Gascon, Sergio Serrano, Cristiana Sessa, Tania Crombet, and Joan Albanell

---

## ABOUT THE COVER

Automated quantitative analysis (AQUA) of STAT3 in head and neck squamous cell carcinoma (HNSCC) may be a more reliable indicator of *STAT3* activation status. The cover features a pseudocolored colocalization image demonstrating compartment assignment. Cytokeratin-Cy3 (green) was used to define the nonnuclear compartment; 4',6-Diamidino-2-phenylindole (DAPI; blue) was used to define the nuclear compartment. For details, see the article by Pectasides and colleagues on page 2427 of this issue.



# Clinical Cancer Research

**16 (8)**

*Clin Cancer Res* 2010;16:2227-2482.

**Updated version** Access the most recent version of this article at:  
<http://clincancerres.aacrjournals.org/content/16/8>

**E-mail alerts** [Sign up to receive free email-alerts](#) related to this article or journal.

**Reprints and Subscriptions** To order reprints of this article or to subscribe to the journal, contact the AACR Publications Department at [pubs@aacr.org](mailto:pubs@aacr.org).

**Permissions** To request permission to re-use all or part of this article, use this link <http://clincancerres.aacrjournals.org/content/16/8>. Click on "Request Permissions" which will take you to the Copyright Clearance Center's (CCC) Rightslink site.