

Highlights of This Issue 6107

SPECIAL FEATURES

CCR Translations

- 6109 | **High-Dose Antiangiogenic Therapy for Glioblastoma: Less May Be More?**
John F. de Groot
See article p. 6192

CCR New Strategies

- 6112 | **New Strategies in Diffuse Large B-cell Lymphoma: Translating Findings from Gene Expression Analyses into Clinical Practice**
Jonathan W. Friedberg

Molecular Pathways

- 6118 | **The Two Faces of Interferon- γ in Cancer**
M. Raza Zaidi and Glenn Merlino
- 6125 | **Regulation of Cancer Stem Cells by Cytokine Networks: Attacking Cancer's Inflammatory Roots**
Hasan Korkaya, Suling Liu, and Max S. Wicha

Review

- 6130 | **Beyond VEGF: Inhibition of the Fibroblast Growth Factor Pathway and Angiogenesis**
Christopher Lieu, John Heymach, Michael Overman, Hai Tran, and Scott Kopetz

HUMAN CANCER BIOLOGY

- 6140 | **Cyclin-Dependent Kinase 5 Is Amplified and Overexpressed in Pancreatic Cancer and Activated by Mutant K-Ras**
John P. Eggers, Paul M. Grandgenett, Eric C. Collisson, Michelle E. Lewallen, Jarrod Tremayne, Pankaj K. Singh, Benjamin J. Swanson, Judy M. Andersen, Thomas C. Caffrey, Robin R. High, Michel Ouellette, and Michael A. Hollingsworth

CANCER THERAPY: PRECLINICAL

- 6151 | **Recombinant Human Erythropoietin in Combination with Chemotherapy Increases Breast Cancer Metastasis in Preclinical Mouse Models**
Benjamin D. Hedley, Jenny E. Chu, D. George Ormond, Michel S. Beausoleil, Alexandra Boasie, Alison L. Allan, and Anargyros Xenocostas
- 6163 | **Therapeutic Effect of Lenalidomide in a Novel Xenograft Mouse Model of Human Blastic NK Cell Lymphoma/ Blastic Plasmacytoid Dendritic Cell Neoplasm**
Alice Agliano, Ines Martin-Padura, Paola Marighetti, Giuliana Gregato, Angelica Calleri, Celia Prior, Miriam Redrado, Alfonso Calvo, and Francesco Bertolini
- 6174 | **Targeting ALDH^{bright} Human Carcinoma-Initiating Cells with ALDH1A1-Specific CD8⁺ T Cells**
Carmen Visus, Yangyang Wang, Antonio Lozano-Leon, Robert L. Ferris, Susan Silver, Mirosław J. Szczepanski, Randall E. Brand, Cristina R. Ferrone, Theresa L. Whiteside, Soldano Ferrone, Albert B. DeLeo, and Xinhui Wang
- 6185 | **Prevention of Chemotherapy-Induced Anemia and Thrombocytopenia by Constant Administration of Stem Cell Factor**
Monica Bartucci, Rosanna Dattilo, Daniela Martinetti, Matilde Todaro, Giuseppina Zapparelli, Antonio Di Virgilio, Mauro Biffoni, Ruggero De Maria, and Ann Zeuner
- 6192 | **Bevacizumab Has Differential and Dose-Dependent Effects on Glioma Blood Vessels and Tumor Cells**
Louisa von Baumgarten, David Brucker, Anca Tirniceru, Yvonne Kienast, Stefan Grau, Steffen Burgold, Jochen Herms, and Frank Winkler
See commentary p. 6109
- 6206 | **Enhancement of Carboplatin-Mediated Lung Cancer Cell Killing by Simultaneous Disruption of Glutathione and Thioredoxin Metabolism**
Melissa A. Fath, Iman M. Ahmad, Carmen J. Smith, Jacquelyn Spence, and Douglas R. Spitz

6218 **Dual EGFR/HER2 Inhibition Sensitizes Prostate Cancer Cells to Androgen Withdrawal by Suppressing ErbB3**
Liqun Chen, Benjamin A. Mooso, Maitreyee K. Jathal, Anisha Madhav, Sherra D. Johnson, Elyse van Spyk, Margarita Mikhailova, Alexandra Zierenberg-Ripoll, Lingru Xue, Ruth L. Vinall, Ralph W. deVere White, and Paramita M. Ghosh

6229 **Autophagy Activation in Hepatocellular Carcinoma Contributes to the Tolerance of Oxaliplatin via Reactive Oxygen Species Modulation**
Zhen-Bin Ding, Bo Hui, Ying-Hong Shi, Jian Zhou, Yuan-Fei Peng, Cheng-Yu Gu, Hua Yang, Guo-Ming Shi, Ai-Wu Ke, Xiao-Ying Wang, Kang Song, Zhi Dai, Ying-Hao Shen, and Jia Fan

IMAGING, DIAGNOSIS, PROGNOSIS

6239 **Colorectal Cancers with Microsatellite Instability Display Unique miRNA Profiles**
Francesc Balaguer, Leticia Moreira, Juan Jose Lozano, Alexander Link, Georgina Ramirez, Yan Shen, Miriam Cuatrecasas, Mildred Arnold, Stephen J. Meltzer, Sapna Syngal, Elena Stoffel, Rodrigo Jover, Xavier Llor, Antoni Castells, C. Richard Boland, Meritxell Gironella, and Ajay Goel

6250 **Metabolic Imaging: A Link between Lactate Dehydrogenase A, Lactate, and Tumor Phenotype**
Inna Serganova, Asif Rizwan, Xiaohui Ni, Sunitha B. Thakur, Jelena Vider, James Russell, Ronald Blasberg, and Jason A. Koutcher

6262 **Evaluation of Human Papilloma Virus Diagnostic Testing in Oropharyngeal Squamous Cell Carcinoma: Sensitivity, Specificity, and Prognostic Discrimination**
Andrew G. Schache, Triantafilos Liloglou, Janet M. Risk, Anastasia Filia, Terence M. Jones, Jon Sheard, Julia A. Woolgar, Timothy R. Helliwell, Asterios Triantafyllou, Max Robinson, Philip Sloan, Colin Harvey-Woodworth, Daniel Sisson, and Richard J. Shaw

6272 **Identification of Epstein-Barr Virus–Induced Gene 3 as a Novel Serum and Tissue Biomarker and a Therapeutic Target for Lung Cancer**
Ryohei Nishino, Atsushi Takano, Hideto Oshita, Nobuhisa Ishikawa, Hirohiko Akiyama, Hiroyuki Ito, Haruhiko Nakayama, Yohei Miyagi, Eiju Tsuchiya, Nobuoki Kohno, Yusuke Nakamura, and Yataro Daigo

CANCER THERAPY: CLINICAL

6287 **Adoptive Transfer of Autologous Natural Killer Cells Leads to High Levels of Circulating Natural Killer Cells but Does Not Mediate Tumor Regression**
Maria R. Parkhurst, John P. Riley, Mark E. Dudley, and Steven A. Rosenberg

6298 **Disease Flare after Tyrosine Kinase Inhibitor Discontinuation in Patients with EGFR-Mutant Lung Cancer and Acquired Resistance to Erlotinib or Gefitinib: Implications for Clinical Trial Design**
Jamie E. Chaft, Geoffrey R. Oxnard, Camelia S. Sima, Mark G. Kris, Vincent A. Miller, and Gregory J. Riely

6304 **A Phase I Pharmacokinetic and Pharmacodynamic Study of Dalotuzumab (MK-0646), an Anti-Insulin-like Growth Factor-1 Receptor Monoclonal Antibody, in Patients with Advanced Solid Tumors**
Francesco Atzori, Josep Tabernero, Andrés Cervantes, Ludmila Prudkin, Jordi Andreu, Edith Rodríguez-Braun, Amparo Domingo, Jorge Guijarro, Cristina Gamez, Jordi Rodon, Serena Di Cosimo, Holly Brown, Jason Clark, James S. Hardwick, Robert A. Beckman, William D. Hanley, Karl Hsu, Emiliano Calvo, Susana Roselló, Ronald B. Langdon, and José Baselga

6313 **A Phase I First-in-Human Pharmacokinetic and Pharmacodynamic Study of Serdemetan in Patients with Advanced Solid Tumors**
Josep Tabernero, Luc Dirix, Patrick Schöffski, Andrés Cervantes, Jose Antonio Lopez-Martin, Jaume Capdevila, Ludy van Beijsterveldt, Suso Platero, Brett Hall, Zhilong Yuan, Roland Knoblauch, and Sen Hong Zhuang

6322 **Maintained Sensitivity to EGFR Tyrosine Kinase Inhibitors in EGFR-Mutant Lung Cancer Recurring after Adjuvant Erlotinib or Gefitinib**
Geoffrey R. Oxnard, Yelena Y. Janjigian, Maria E. Arcila, Camelia S. Sima, Samantha L. Kass, Gregory J. Riely, William Pao, Mark G. Kris, Marc Ladanyi, Christopher G. Azzoli, and Vincent A. Miller

6329 | **Cetuximab Pharmacokinetics Influences Progression-Free Survival of Metastatic Colorectal Cancer Patients**
Nicolas Azzopardi, Thierry Lecomte, David Ternant, Michelle Boisdron-Celle, Friedrich Piller, Alain Morel, Valérie Gouilleux-Gruart, Céline Vignault-Desvignes, Hervé Watier, Erick Gamelin, and Gilles Paintaud

PREDICTIVE BIOMARKERS AND PERSONALIZED MEDICINE

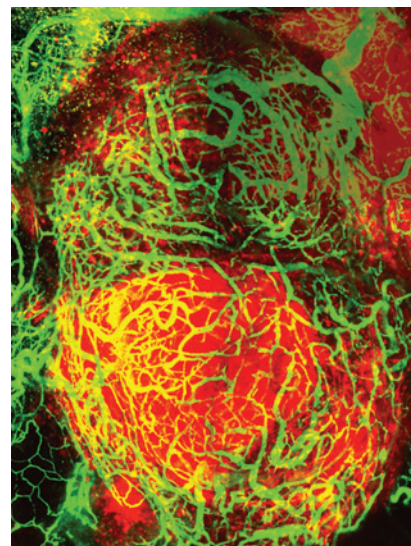
6338 | **KRAS and BRAF Mutation Analysis in Metastatic Colorectal Cancer: A Cost-effectiveness Analysis from a Swiss Perspective**
Patricia R. Blank, Holger Moch, Thomas D. Szucs, and Matthias Schwenkglenks

6347 | **A Gene Expression-Based Predictor for Myeloma Patients at High Risk of Developing Bone Disease on Bisphosphonate Treatment**
Ping Wu, Brian A. Walker, Daniel Brewer, Walter M. Gregory, John Ashcroft, Fiona M. Ross, Graham H. Jackson, Anthony J. Child, Faith E. Davies, and Gareth J. Morgan

6356 | **BAD Phosphorylation Determines Ovarian Cancer Chemosensitivity and Patient Survival**
Douglas C. Marchion, Hope M. Cottrill, Yin Xiong, Ning Chen, Elona Bicaku, William J. Fulp, Nisha Bansal, Hye Sook Chon, Xiaomang B. Stickle, Siddharth G. Kamath, Ardeshir Hakam, Lihua Li, Dan Su, Carolina Moreno, Patricia L. Judson, Andrew Berchuck, Robert M. Wenham, Sachin M. Apte, Jesus Gonzalez-Bosquet, Gregory C. Bloom, Steven A. Eschrich, Said Sebt, Dung-Tsa Chen, and Johnathan M. Lancaster

ABOUT THE COVER

Growth of experimental glioma imaged in real time by *in vivo* multiphoton microscopy. This allows the study of the characteristic pattern of glioma growth and angiogenesis, and morphologic and functional vascular changes in response to antiangiogenic treatment. The cover image shows an U87 glioma expressing RFP (red) and tumor vessels (green, FITC dextran) 30 days after brain implantation (tumor diameter 3 mm). The image represents a maximum intensity projection of the mouse brain up to a depth of 350 μm . For details, see the article by von Baumgarten and colleagues on page 6192 of this issue.



Clinical Cancer Research

17 (19)

Clin Cancer Res 2011;17:6107-6366.

Updated version Access the most recent version of this article at:
<http://clincancerres.aacrjournals.org/content/17/19>

E-mail alerts [Sign up to receive free email-alerts](#) related to this article or journal.

Reprints and Subscriptions To order reprints of this article or to subscribe to the journal, contact the AACR Publications Department at pubs@aacr.org.

Permissions To request permission to re-use all or part of this article, use this link <http://clincancerres.aacrjournals.org/content/17/19>.
Click on "Request Permissions" which will take you to the Copyright Clearance Center's (CCC) Rightslink site.