

## Highlights of This Issue 7503

### SPECIAL FEATURES

#### CCR Translations

- 7505 **Differential Role of BCL2 in Molecular Subtypes of Diffuse Large B-cell Lymphoma**  
Kieron Dunleavy and Wyndham H. Wilson  
*See article p. 7785*
- 7508 **BEAMing Sheds Light on Drug Resistance**  
Josh Lauring and Ben Ho Park  
*See article p. 7808*

#### Molecular Pathways

- 7511 **Role of BRAF in Thyroid Oncogenesis**  
Lisa M. Caronia, John E. Phay, and  
Manisha H. Shah

#### Review

- 7518 **Targeting the mTOR/4E-BP Pathway in Endometrial Cancer**  
Sharmilee Bansal Korets, Sarah Czok,  
Stephanie V. Blank, John P. Curtin, and  
Robert J. Schneider

#### HUMAN CANCER BIOLOGY

- 7529 **IL-22, but Not IL-17, Dominant Environment in Cutaneous T-cell Lymphoma**  
Tomomitsu Miyagaki, Makoto Sugaya,  
Hiraku Suga, Masahiro Kamata,  
Hanako Ohmatsu, Hideki Fujita,  
Yoshihide Asano, Yayoi Tada,  
Takafumi Kadono, and Shinichi Sato
- 7539 **Significance of Dysregulated Metadherin and MicroRNA-375 in Head and Neck Cancer**  
Angela B.Y. Hui, Jeff P. Bruce, Nehad M. Alajez,  
Wei Shi, Shijun Yue, Bayardo Perez-Ordenez,  
Wei Xu, Brian O'Sullivan, John Waldron,  
Bernard Cummings, Patrick Gullane, Lillian Siu,  
and Fei-Fei Liu

- 7551 **Epigenetic Alteration of PRKCDBP in Colorectal Cancers and Its Implication in Tumor Cell Resistance to TNF $\alpha$ -Induced Apoptosis**

Jin-Hee Lee, Min-Ju Kang, Hye-Yeon Han,  
Min-Goo Lee, Seong-In Jeong, Byung-Kyu Ryu,  
Tae-Kyu Ha, Nam-Goo Her, Jikhyon Han,  
Sun Jin Park, Kil Yeon Lee, Hyo-Jong Kim, and  
Sung-Gil Chi

- 7563 **Genomic and Molecular Characterization of Malignant Peripheral Nerve Sheath Tumor Identifies the IGF1R Pathway as a Primary Target for Treatment**

Jilong Yang, Antti Ylipää, Yan Sun, Hong Zheng,  
Kexin Chen, Matti Nykter, Jonathan Trent,  
Nancy Ratner, Dina C. Lev, and Wei Zhang

- 7574 **MicroRNA-148a Suppresses Tumor Cell Invasion and Metastasis by Downregulating ROCK1 in Gastric Cancer**

Biqiang Zheng, Linhui Liang, Chunmeng Wang,  
Shenglin Huang, Xi Cao, Ruopeng Zha, Li Liu,  
Deshui Jia, Qi Tian, Jianghong Wu, Yanwei Ye,  
Qifeng Wang, Ziwen Long, Ye Zhou,  
Chunyan Du, Xianghuo He, and Yingqiang Shi

- 7584 **MicroRNA-494 Downregulates KIT and Inhibits Gastrointestinal Stromal Tumor Cell Proliferation**

Won Kyu Kim, Misun Park, Young-Kook Kim,  
Kwon Tae You, Han-Kwang Yang, Jae Myun Lee,  
and Hoguen Kim

#### CANCER THERAPY: PRECLINICAL

- 7595 **Targeted Therapy for BRAF<sup>V600E</sup> Malignant Astrocytoma**  
Theodore P. Nicolaidis, Huifang Li,  
David A. Solomon, Sujatmi Hariono,  
Rintaro Hashizume, Krister Barkovich,  
Suzanne J. Baker, Barbara S. Paugh, Chris Jones,  
Tim Forschew, Guy F. Hindley,  
J. Graeme Hodgson, Jung-Sik Kim,  
David H. Rowitch, William A. Weiss,  
Todd A. Waldman, and C. David James

- 7605 **Important Role of Caspase-8 for Chemosensitivity of ALL Cells**  
Harald Ehrhardt, Franziska Wachter,  
Martina Maurer, Karsten Stahnke, and  
Irmela Jeremias

7614 **Characterization of Alisertib (MLN8237), an Investigational Small-Molecule Inhibitor of Aurora A Kinase Using Novel *In Vivo* Pharmacodynamic Assays**  
Mark G. Manfredi, Jeffrey A. Ecsedy, Arijit Chakravarty, Lee Silverman, Mengkun Zhang, Kara M. Hoar, Stephen G. Stroud, Wei Chen, Vaishali Shinde, Jessica J. Huck, Deborah R. Wysong, David A. Janowick, Marc L. Hyer, Patrick J. LeRoy, Rachel E. Gershman, Matthew D. Silva, Melissa S. Germanos, Joseph B. Bolen, Christopher F. Claiborne, and Todd B. Sells

7625 **Iron Deprivation Suppresses Hepatocellular Carcinoma Growth in Experimental Studies**  
Qian Ba, Miao Hao, He Huang, Junmei Hou, Shichao Ge, Zhuzhen Zhang, Jun Yin, Rui'ai Chu, Hualiang Jiang, Fudi Wang, Kaixian Chen, Hong Liu, and Hui Wang

## IMAGING, DIAGNOSIS, PROGNOSIS

7634 **Pharmacodynamic Study Using FLT PET/CT in Patients with Renal Cell Cancer and Other Solid Malignancies Treated with Sunitinib Malate**  
Glenn Liu, Robert Jeraj, Matt Vanderhoek, Scott Perlman, Jill Kolesar, Michael Harrison, Urban Simoncic, Jens Eickhoff, Lakeesha Carmichael, Bo Chao, Rebecca Marnocha, Percy Ivy, and George Wilding

7645 **2-(3-{1-Carboxy-5-[(6-[<sup>18</sup>F]Fluoro-Pyridine-3-Carbonyl)-Amino]-Pentyl}-Ureido)-Pentanedioic Acid, [<sup>18</sup>F]DCFPyL, a PSMA-Based PET Imaging Agent for Prostate Cancer**  
Ying Chen, Mrudula Pullambhatla, Catherine A. Foss, Youngjoo Byun, Sridhar Nimmagadda, Srinivasan Senthamizhchelvan, George Sgouros, Ronnie C. Mease, and Martin G. Pomper

7654 **Overexpression of ZEB2 at the Invasion Front of Colorectal Cancer Is an Independent Prognostic Marker and Regulates Tumor Invasion *In Vitro***  
Christoph Kahlert, Saleh Lahes, Praveen Radhakrishnan, Shamik Dutta, Carolin Mogler, Esther Herpel, Karsten Brand, Gunnar Steinert, Martin Schneider, Martin Mollenhauer, Christoph Reissfelder, Fee Klupp, Johannes Fritzmann, Christina Wunder, Axel Benner, Matthias Kloor, Cathrin Huth, Pietro Contin, Alexis Ulrich, Moritz Koch, and Jürgen Weitz

7664 **[<sup>18</sup>F]-3'-Deoxy-3'-Fluorothymidine Positron Emission Tomography and Breast Cancer Response to Docetaxel**  
Kaiyumars B. Contractor, Laura M. Kenny, Justin Stebbing, Lula Rosso, Rizvana Ahmad, Jimmy Jacob, Amarnath Challapalli, Federico Turkheimer, Adil Al-Nahhas, Rohini Sharma, R. Charles Coombes, and Eric O. Aboagye

7673 **Use of [<sup>11</sup>C]Choline PET-CT as a Noninvasive Method for Detecting Pelvic Lymph Node Status from Prostate Cancer and Relationship with Choline Kinase Expression**  
Kaiyumars Contractor, Amarnath Challapalli, Tara Barwick, Mathias Winkler, Giles Hellawell, Steve Hazell, Giampaolo Tomasi, Adil Al-Nahhas, Paola Mapelli, Laura M. Kenny, Paul Tadrous, R. Charles Coombes, Eric O. Aboagye, and Stephen Mangar

7684 **miRNA Expression Profiling Enables Risk Stratification in Archived and Fresh Neuroblastoma Tumor Samples**

Katleen De Preter, Pieter Mestdagh, Joëlle Vermeulen, Fjoralba Zeka, Arlene Naranjo, Isabella Bray, Victoria Castel, Caifu Chen, Elzbieta Drozyska, Angelika Eggert, Michael D. Hogarty, Ewa Izzycka-Swieszewska, Wendy B. London, Rosa Noguera, Marta Piqueras, Kenneth Bryan, Benjamin Schowe, Peter van Sluis, Jan J. Molenaar, Alexander Schramm, Johannes H. Schulte, Raymond L. Stallings, Rogier Versteeg, Geneviève Laureys, Nadine Van Roy, Frank Speleman, and Jo Vandesompele

7693 **Predicting IGF-1R Therapy Response in Bone Sarcomas: Immuno-SPECT Imaging with Radiolabeled R1507**  
Emmy D.G. Fleuren, Yvonne M.H. Versleijen-Jonkers, Addy C.M. van de Luijtgaarden, Janneke D.M. Molkenboer-Kuennen, Sandra Heskamp, Melissa H.S. Roeffen, Hanneke W.M. van Laarhoven, Peter J. Houghton, Wim J.G. Oyen, Otto C. Boerman, and Winette T.A. van der Graaf

7704 **Chromosomal Instability Substantiates Poor Prognosis in Patients with Diffuse Large B-cell Lymphoma**  
Samuel F. Bakhom, Olga V. Danilova, Prabhjot Kaur, Norman B. Levy, and Duane A. Compton

7712 **Chondrolectin Is a Novel Diagnostic Biomarker and a Therapeutic Target for Lung Cancer**

Ken Masuda, Atsushi Takano, Hideto Oshita, Hirohiko Akiyama, Eiju Tsuchiya, Nobuoki Kohno, Yusuke Nakamura, and Yataro Daigo

7723 **A *Let-7* MicroRNA SNP in the *KRAS* 3'UTR Is Prognostic in Early-Stage Colorectal Cancer**

Kim M. Smits, Trupti Paranjape, Sunitha Nallur, Kim A.D. Wouters, Matty P. Weijnenberg, Leo J. Schouten, Piet A. van den Brandt, Fred T. Bosman, Joanne B. Weidhaas, and Manon van Engeland

## CANCER THERAPY: CLINICAL

7732 **A Dose-Escalation and Signal-Generating Study of the Immunocytokine L19-IL2 in Combination with Dacarbazine for the Therapy of Patients with Metastatic Melanoma**

Thomas K. Eigentler, Benjamin Weide, Filippo de Braud, Gianluca Spitaleri, Antonella Romanini, Annette Pflugfelder, Reinerio González-Iglesias, Annaelisa Tasciotti, Leonardo Giovannoni, Kathrin Schwager, Valeria Lovato, Manuela Kaspar, Eveline Trachsel, Hans D. Menssen, Dario Neri, and Claus Garbe

7743 **Phase I Study of Topotecan, Ifosfamide, and Etoposide (TIME) with Autologous Stem Cell Transplant in Refractory Cancer: Pharmacokinetic and Pharmacodynamic Correlates**

Janelle B. Perkins, Steven C. Goldstein, Jana L. Dawson, Jongphil Kim, Teresa L. Field, James S. Partyka, Karen K. Fields, Beth L. Maddox, Christine E. Simonelli, Anthony M. Neuger, Richard M. Lush, and Daniel M. Sullivan

7754 **A Phase I Dose-Escalation Study of Tivantinib (ARQ 197) in Adult Patients with Metastatic Solid Tumors**

Lee S. Rosen, Neil Senzer, Tarek Mekhail, Ram Ganapathi, Feng Chai, Ronald E. Savage, Carol Waghorne, Giovanni Abbadessa, Brian Schwartz, and Robert Dreicer

7765 **Phase I Trial of ALT-801, an Interleukin-2/T-Cell Receptor Fusion Protein Targeting p53 (aa264–272)/HLA-A\*0201 Complex, in Patients with Advanced Malignancies**

Mayer N. Fishman, John A. Thompson, Gregory K. Pennock, Rene Gonzalez, Luz M. Diez, Adil I. Daud, Jeffery S. Weber, Bee Y. Huang, Shamay Tang, Peter R. Rhode, and Hing C. Wong

## PREDICTIVE BIOMARKERS AND PERSONALIZED MEDICINE

7776 **Mapping of Chromosome 1p Deletions in Myeloma Identifies *FAM46C* at 1p12 and *CDKN2C* at 1p32.3 as Being Genes in Regions Associated with Adverse Survival**

Kevin D. Boyd, Fiona M. Ross, Brian A. Walker, Christopher P. Wardell, William J. Tapper, Laura Chiecchio, GianPaolo Dagrada, Zoe J. Konn, Walter M. Gregory, Graham H. Jackson, J. Anthony Child, Faith E. Davies, and Gareth J. Morgan on behalf of the NCRI Haematology Oncology Studies Group

7785 ***BCL2* Predicts Survival in Germinal Center B-cell-like Diffuse Large B-cell Lymphoma Treated with CHOP-like Therapy and Rituximab**

Javeed Iqbal, Paul N. Meyer, Lynette M. Smith, Nathalie A. Johnson, Julie M. Vose, Timothy C. Greiner, Joseph M. Connors, Louis M. Staudt, Lisa Rimsza, Elaine Jaffe, Andreas Rosenwald, German Ott, Jan Delabie, Elias Campo, Rita M. Braziel, James R. Cook, Raymond R. Tubbs, Randy D. Gascoyne, James O. Armitage, Dennis D. Weisenburger, and Wing C. Chan

*See commentary p. 7505*

7796 **EGFR Protein Expression in Non-Small Cell Lung Cancer Predicts Response to an EGFR Tyrosine Kinase Inhibitor—A Novel Antibody for Immunohistochemistry or AQUA Technology**

Celine Mascaux, Murry W. Wynes, Yasufumi Kato, Cindy Tran, Bernadette Reyna Asuncion, Jason M. Zhao, Mark Gustavson, Jim Ranger-Moore, Fabien Gaire, Jun Matsubayashi, Toshitaka Nagao, Koichi Yoshida, Tatuso Ohira, Norihiko Ikeda, and Fred R. Hirsch

7808 **Quantitative Detection of *EGFR* Mutations in Circulating Tumor DNA Derived from Lung Adenocarcinomas**

Kazuya Taniguchi, Junji Uchida, Kazumi Nishino, Toru Kumagai, Takako Okuyama, Jiro Okami, Masahiko Higashiyama, Ken Kodama, Fumio Imamura, and Kikuya Kato

*See commentary p. 7508*

7816 **hVps37A Status Affects Prognosis and Cetuximab Sensitivity in Ovarian Cancer**

Michael Wittinger, Petr Vanhara, Ahmed El-Gazzar, Bettina Savarese-Brenner, Dietmar Pils, Mariam Anees, Thomas W. Grunt, Maria Sibia, Martin Holcman, Reinhard Horvat, Michael Schemper, Robert Zeillinger, Christian Schöfer, Helmut Dolznig, Peter Horak, and Michael Krainer

7828 **Adjuvant Sequencing of Tamoxifen and Anastrozole Is Superior to Tamoxifen Alone in Postmenopausal Women with Low Proliferating Breast Cancer**

Zsuzsanna Bago-Horvath, Margaretha Rudas, Peter Dubsy, Raimund Jakesz, Christian F. Singer, Ralf Kemmerling, Richard Greil, Andrea Jelen, Gerhard Böhm, Zerina Jasarevic, Anton Haid, Christine Gruber, Sabine Pöstlberger, Martin Filipits, and Michael Gnant for the Austrian Breast and Colorectal Cancer Study Group

**LETTERS TO THE EDITOR**

7835 **Prognostic Immune Markers in Non-Small Cell Lung Cancer—Letter**  
Janardan P. Pandey

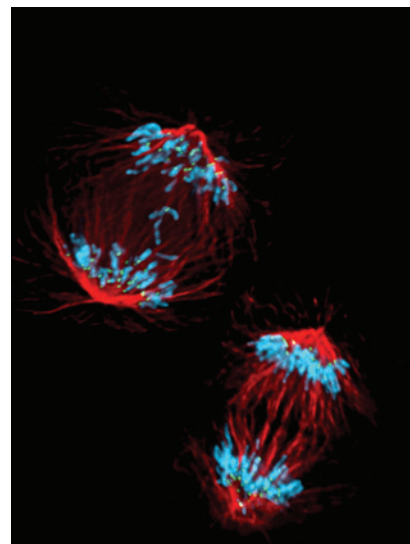
7836 **Prognostic Immune Markers in Non-Small Cell Lung Cancer—Response**  
Kei Suzuki and Prasad S. Adusumilli

7837 **IL-6 and Ovarian Cancer—Letter**  
Jason W. Locasale and Benjamin Zeskind

7838 **IL-6 and Ovarian Cancer—Response**  
Frances R. Balkwill, Jermaine Coward, Hagen Kulbe, Carla Milagre, Ganga Gopinathan, and Iain A. McNeish

**ABOUT THE COVER**

Lagging chromosomes are the primary mechanism of chromosome mis-segregation in human cells. Bakhoun and colleagues investigate the role of chromosome mis-segregation in tumor prognosis in patients diagnosed with diffuse large B-cell lymphoma. The cover shows normal chromosome mis-segregation (bottom) and an anaphase spindle containing two lagging chromosomes. Kinetochores are in green, microtubules are in red, and chromosomes (top) are in blue. For details, see the article by Bakhoun and colleagues on page 7704 of this issue.



# Clinical Cancer Research

**17 (24)**

*Clin Cancer Res* 2011;17:7503-7838.

**Updated version** Access the most recent version of this article at:  
<http://clincancerres.aacrjournals.org/content/17/24>

**E-mail alerts** [Sign up to receive free email-alerts](#) related to this article or journal.

**Reprints and Subscriptions** To order reprints of this article or to subscribe to the journal, contact the AACR Publications Department at [pubs@aacr.org](mailto:pubs@aacr.org).

**Permissions** To request permission to re-use all or part of this article, use this link <http://clincancerres.aacrjournals.org/content/17/24>.  
Click on "Request Permissions" which will take you to the Copyright Clearance Center's (CCC) Rightslink site.