

## Highlights of This Issue 633

### SPECIAL FEATURES

#### CCR Translations

- 635 | **Markers of Pancreatic Cancer:  
Working Toward Early Detection**  
Michael Goggins  
*See article p. 805*
- 638 | **One Allele's Loss Is Another's Gain:  
Alterations of *NKX2-8* in Non-Small  
Cell Lung Cancer**  
Joel W. Neal and Alice T. Shaw  
*See article p. 690*

#### Statistics in CCR

- 640 | **Seamless Phase I-II Trial Design for  
Assessing Toxicity and Efficacy for  
Targeted Agents**  
Antje Hoering, Mike LeBlanc, and  
John Crowley

#### Molecular Pathways

- 647 | **Targeting Wnt Signaling in Colon  
Cancer Stem Cells**  
Felipe de Sousa E. Melo, Louis Vermeulen,  
Dick Richel, and Jan Paul Medema

#### Review

- 654 | **Principles and Current Strategies for  
Targeting Autophagy for Cancer  
Treatment**  
Ravi K. Amaravadi,  
Jennifer Lippincott-Schwartz, Xiao-Ming Yin,  
William A. Weiss, Naoko Takebe,  
William Timmer, Robert S. DiPaola,  
Michael T. Lotze, and Eileen White

## HUMAN CANCER BIOLOGY

- 667 | ***PIK3CA* Mutations May Be Discordant  
between Primary and Corresponding  
Metastatic Disease in Breast Cancer**  
Jeanette Dupont Jensen,  
Anne-Vibeke Laenkholm, Ann Knoop,  
Marianne Ewertz, Raj Bandaru, Weihua Liu,  
Wolfgang Hackl, J. Carl Barrett, and  
Humphrey Gardner
- 678 | **Natural Killer Cells are Scarce in  
Colorectal Carcinoma Tissue Despite  
High Levels of Chemokines and  
Cytokines**  
Niels Halama, Monika Braun,  
Christoph Kahlert, Anna Spille,  
Christian Quack, Nuh Rahbari, Moritz Koch,  
Jürgen Weitz, Matthias Kloor, Inka Zoernig,  
Peter Schirmacher, Karsten Brand, Niels Grabe,  
and Christine S. Falk
- 690 | **Both Gene Amplification and Allelic  
Loss Occur at 14q13.3 in Lung Cancer**  
Thomas Harris, Qiulu Pan, Juan Sironi,  
Dionne Lutz, Jianmin Tian, Jana Sapkar,  
Roman Perez-Soler, Steven Keller,  
and Joseph Locker  
*See commentary p. 638*
- 700 | **Clinical Validation of Colorectal  
Cancer Biomarkers Identified from  
Bioinformatics Analysis of Public  
Expression Data**  
Yeonjoo Jung, Sanghyuk Lee,  
Hyung-Seok Choi, Soon-Nam Kim,  
Eunyoung Lee, Youngah Shin, Jihae Seo,  
Bumjin Kim, Yeonhwa Jung, Wan Kyu Kim,  
Ho-Kyung Chun, Woo Yong Lee, and  
Jaesang Kim
- 710 | **ShRNA-Targeted MAP4K4 Inhibits  
Hepatocellular Carcinoma Growth**  
An-Wen Liu, Jing Cai, Xiang-Li Zhao,  
Ting-Hui Jiang, Tian-Feng He, Hua-Qun Fu,  
Ming-Hua Zhu, and Shu-Hui Zhang

## CANCER THERAPY: PRECLINICAL

- 721 | **MEK-Independent Survival of  
B-RAF<sup>V600E</sup> Melanoma Cells Selected  
for Resistance to Apoptosis Induced  
by the RAF Inhibitor PLX4720**  
Chen Chen Jiang, Fritz Lai, Rick F. Thorne,  
Fan Yang, Hao Liu, Peter Hersey, and  
Xu Dong Zhang

731 **Polo-Like Kinase 1 is a Therapeutic Target in High-Risk Neuroblastoma**

Sandra Ackermann, Felix Goeser, Johannes H. Schulte, Alexander Schramm, Volker Ehemann, Barbara Hero, Angelika Eggert, Frank Berthold, and Matthias Fischer

742 **ICER Evokes Dusp1-p38 Pathway Enhancing Chemotherapy Sensitivity in Myeloid Leukemia**

Martina Pigazzi, Elena Manara, Alessandra Beghin, Emma Baron, Claudia Tregnago, and Giuseppe Basso

753 **Silibinin Prevents Lung Tumorigenesis in Wild-Type but not in iNOS<sup>-/-</sup> Mice: Potential of Real-Time Micro-CT in Lung Cancer Chemoprevention Studies**

Kumaraguruparan Ramasamy, Lori D. Dwyer-Nield, Natalie J. Serkova, Kendra M. Hasebroock, Alpna Tyagi, Komal Raina, Rana P. Singh, Alvin M. Malkinson, and Rajesh Agarwal

762 **Dasatinib Plus Nutlin-3 Shows Synergistic Antileukemic Activity in Both p53<sup>wild-type</sup> and p53<sup>mutated</sup> B Chronic Lymphocytic Leukemias by Inhibiting the Akt Pathway**

Giorgio Zauli, Rebecca Voltan, Raffaella Bosco, Elisabetta Melloni, Sandra Marmiroli, Gian Matteo Rigolin, Antonio Cuneo, and Paola Secchiero

771 **Carbon Nanotubes Enhance CpG Uptake and Potentiate Antiglioma Immunity**

Dongchang Zhao, Darya Alizadeh, Leying Zhang, Wei Liu, Omar Farrukh, Edwin Manuel, Don J. Diamond, and Behnam Badie

783 **Tumor Growth Inhibition by Olaparib in BRCA2 Germline-Mutated Patient-Derived Ovarian Cancer Tissue Xenografts**

Ursula Kortmann, Jessica N. McAlpine, Hui Xue, Jun Guan, Gavin Ha, Sophie Tully, Sharaz Shafait, Alan Lau, Aaron N. Cranston, Mark J. O'Connor, David G. Huntsman, Yuzhuo Wang, and C. Blake Gilks

## IMAGING, DIAGNOSIS, PROGNOSIS

792 **A Multilocus Technique for Risk Evaluation of Patients with Neuroblastoma**

Inge M. Ambros, Bettina Brunner, Gerhard Aigner, Clare Bedwell, Klaus Beiske, Jean Bénard, Nick Bown, Valerie Combaret, Jerome Couturier, Raffaella Defferrari, Nicole Gross, Marta Jeison, John Lunec, Barbara Marques, Tommy Martinsson, Katia Mazzocco, Rosa Noguera, Gudrun Schleiermacher, Frank Speleman, Ray Stallings, Gian Paolo Tonini, Deborah A. Tweddle, Alexander Valent, Ales Vicha, Nadine Van Roy, Eva Villamon, Andrea Ziegler, Sandra Preuner, Mario Drobics, Ruth Ladenstein, Gabriele Amann, Robert J.L. Schuit, Ulrike Pötschger, and Peter F. Ambros

805 **Serum Biomarker Panels for the Detection of Pancreatic Cancer**

Randall E. Brand, Brian M. Nolen, Herbert J. Zeh, Peter J. Allen, Mohamad A. Eloubeidi, Michael Goldberg, Eric Elton, Juan P. Arnoletti, John D. Christein, Selwyn M. Vickers, Christopher J. Langmead, Douglas P. Landsittel, David C. Whitcomb, William E. Grizzle, and Anna E. Lokshin  
*See commentary p. 635*

817 **CYP24A1 Is an Independent Prognostic Marker of Survival in Patients with Lung Adenocarcinoma**

Guoan Chen, So Hee Kim, Amanda N. King, Lili Zhao, Robert U. Simpson, Paul J. Christensen, Zhuwen Wang, Dafydd G. Thomas, Thomas J. Giordano, Lin Lin, Dean E. Brenner, David G. Beer, and Nithya Ramnath

827 **Preoperative Circulating Tumor Cell Detection Using the Isolation by Size of Epithelial Tumor Cell Method for Patients with Lung Cancer Is a New Prognostic Biomarker**

Véronique Hofman, Christelle Bonnetaud, Marius I. Ilie, Philippe Vielh, Jean Michel Vignaud, Jean François Fléjou, Sylvie Lantuejoul, Eric Piaton, Nadine Mourad, Catherine Butori, Eric Selva, Michel Poudenx, Stéphanie Sibon, Sabrina Kelhef, Nicolas Vénissac, Jean-Philippe Jais, Jérôme Mouroux, Thierry Jo Molina, and Paul Hofman

836 **Pathologic Reassessment of Prostate Cancer Surgical Specimens Before Molecular Retrospective Studies**

Gaëlle Fromont, Pierre Validire, Dominique Prapotnich, François Rozet, Guy Vallancien, Olivier Cussenot, and Xavier Cathelineau

841 **Frequency of Circulating Tregs with Demethylated FOXP3 Intron 1 in Melanoma Patients Receiving Tumor Vaccines and Potentially Treg-Depleting Agents**

I. Jolanda M. de Vries, Chiara Castelli, Caroline Huygens, Joannes F.M. Jacobs, Julie Stockis, Beatrice Schuler-Thurner, Gosse J. Adema, Cornelis J.A. Punt, Licia Rivoltini, Gerold Schuler, Pierre G. Coulie, and Sophie Lucas

849 **Phase I Safety, Pharmacokinetic, and Pharmacodynamic Study of ENMD-2076, a Novel Angiogenic and Aurora Kinase Inhibitor, in Patients with Advanced Solid Tumors**

Jennifer R. Diamond, Bruno R. Bastos, Ryan J. Hansen, Daniel L. Gustafson, S. Gail Eckhardt, Eunice L. Kwak, Shuchi S. Pandya, Graham C. Fletcher, Todd M. Pitts, Gillian N. Kulikowski, Mark Morrow, Jamie Arnott, Mark R. Bray, Carolyn Sidor, Wells Messersmith, and Geoffrey I. Shapiro

861 **Efficient *In vivo* Priming by Vaccination with Recombinant NY-ESO-1 Protein and CpG in Antigen Naïve Prostate Cancer Patients**

Julia Karbach, Antje Neumann, Akin Atmaca, Claudia Wahle, Kathrin Brand, Lotta von Boehmer, Alexander Knuth, Armin Bender, Gerd Ritter, Lloyd J. Old, and Elke Jäger

871 **Combination mTOR and IGF-1R Inhibition: Phase I Trial of Everolimus and Figitumumab in Patients with Advanced Sarcomas and Other Solid Tumors**

Richard Quek, Qian Wang, Jeffrey A. Morgan, Geoffrey I. Shapiro, James E. Butrynski, Nikhil Ramaiya, Tarsha Huftalen, Nicole Jederlinic, Judith Manola, Andrew J. Wagner, George D. Demetri, and Suzanne George

880 **Phase I Dose-Escalation Study of the Novel Antiandrogen BMS-641988 in Patients with Castration-Resistant Prostate Cancer**

Dana Rathkopf, Glenn Liu, Michael A. Carducci, Mario A. Eisenberger, Aseem Anand, Michael J. Morris, Susan F. Slovin, Yasutsuna Sasaki, Shunji Takahashi, Seiichiro Ozono, Nga Kit Eliza Fung, Shinta Cheng, Jinping Gan, Marco Gottardis, Mary T. Obermeier, Jyotsna Reddy, Steven Zhang, Blisse J. Vakkalagadda, Leila Alland, George Wilding, and Howard I. Scher on behalf of the Prostate Cancer Clinical Trials Consortium

888 **Phase I Clinical Study of Seneca Valley Virus (SVV-001), a Replication-Competent Picornavirus, in Advanced Solid Tumors with Neuroendocrine Features**

Charles M. Rudin, John T. Poirier, Neil N. Senzer, Joseph Stephenson Jr., David Loesch, Kevin D. Burroughs, P. Seshidhar Reddy, Christine L. Hann, and Paul L. Hallenbeck

896 **Extended Dose Ipilimumab with a Peptide Vaccine: Immune Correlates Associated with Clinical Benefit in Patients with Resected High-Risk Stage IIIc/IV Melanoma**

Amod A. Sarnaik, Bin Yu, Daohai Yu, Dawn Morelli, MacLean Hall, Dilip Bogle, Lulu Yan, Stephan Targan, Jolie Solomon, Geoff Nichol, Michael Yellin, and Jeffrey S. Weber

907 **Tumor Regression and Growth Rates Determined in Five Intramural NCI Prostate Cancer Trials: The Growth Rate Constant as an Indicator of Therapeutic Efficacy**

Wilfred D. Stein, James L. Gulley, Jeff Schlom, Ravi A. Madan, William Dahut, William D. Figg, Yang-min Ning, Phil M. Arlen, Doug Price, Susan E. Bates, and Tito Fojo

918 **Exploratory Analysis of Early Toxicity of Sunitinib in Advanced Hepatocellular Carcinoma Patients: Kinetics and Potential Biomarker Value**

Andrew X. Zhu, Dan G. Duda, Marek Ancukiewicz, Emmanuelle di Tomaso, Jeffrey W. Clark, Rebecca Miksad, Charles S. Fuchs, David P. Ryan, and Rakesh K. Jain

---

## PREDICTIVE BIOMARKERS AND PERSONALIZED MEDICINE

928

### Polymorphisms inside MicroRNAs and MicroRNA Target Sites Predict Clinical Outcomes in Prostate Cancer Patients Receiving Androgen-Deprivation Therapy

Bo-Ying Bao, Jiunn-Bey Pao, Chun-Nung Huang, Yeong-Shiau Pu, Ta-Yuan Chang, Yu-Hsuan Lan, Te-Ling Lu, Hong-Zin Lee, Shin-Hun Juang, Lu-Min Chen, Chi-Jeng Hsieh, and Shu-Pin Huang

937

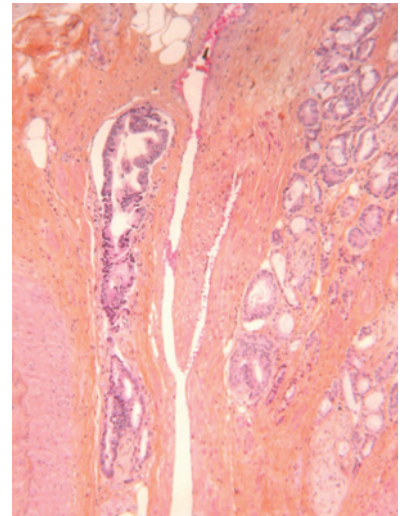
### Impact of *ABCB1* Allelic Variants on QTc Interval Prolongation

Tristan M. Sissung, Erin R. Gardner, Richard L. Piekarz, Reuben Howden, Xiaohong Chen, Sukyung Woo, Ryan Franke, James A. Clark, Laura Miller-DeGraff, Seth M. Steinberg, David Venzon, David Liewehr, Steven R. Kleeberger, Susan E. Bates, Douglas K. Price, Douglas R. Rosing, Christopher Cabell, Alex Sparreboom, and William D. Figg

---

## ABOUT THE COVER

The reassessment of prostate cancer surgical specimens led to reclassification of standard prognostic variables in 15% of cases, including modification of the pathological stage. The radical prostatectomy from this patient with biochemical relapse after surgery was initially classified as pt2, but showed after review a focal extraprostatic extension, with a tumor focus adjacent to periprostatic adipose tissue, beyond the rounded boundary of the gland. For further details, please see Fromont and co-workers on page 836 in this issue.



# Clinical Cancer Research

**17 (4)**

*Clin Cancer Res* 2011;17:633-946.

**Updated version** Access the most recent version of this article at:  
<http://clincancerres.aacrjournals.org/content/17/4>

**E-mail alerts** [Sign up to receive free email-alerts](#) related to this article or journal.

**Reprints and Subscriptions** To order reprints of this article or to subscribe to the journal, contact the AACR Publications Department at [pubs@aacr.org](mailto:pubs@aacr.org).

**Permissions** To request permission to re-use all or part of this article, use this link <http://clincancerres.aacrjournals.org/content/17/4>. Click on "Request Permissions" which will take you to the Copyright Clearance Center's (CCC) Rightslink site.