

Highlights of This Issue 2721

SPECIAL FEATURES

CCR Translations

- 2723 | **Metformin and Pancreatic Cancer: A Clue Requiring Investigation**
Michael Pollak
See article p. 2905

Molecular Pathways

- 2726 | **Molecular Pathways: Vasculogenic Mimicry in Tumor Cells: Diagnostic and Therapeutic Implications**
Dawn A. Kirschmann, Elisabeth A. Seftor, Katharine M. Hardy, Richard E.B. Seftor, and Mary J.C. Hendrix

CCR Focus

- 2734 | **Progress in Pediatric Cancer**
Susan E. Bates
- 2735 | **Genetically Informed Therapies—A "GIFT" for Children with Cancer**
Carol J. Thiele and Susan L. Cohn
- 2740 | **Promising Therapeutic Targets in Neuroblastoma**
Katherine K. Matthay, Rani E. George, and Alice L. Yu
- 2754 | **Advances in the Genetics of High-Risk Childhood B-Progenitor Acute Lymphoblastic Leukemia and Juvenile Myelomonocytic Leukemia: Implications for Therapy**
Mignon L. Loh and Charles G. Mullighan
- 2768 | **Epigenetic Changes in Pediatric Solid Tumors: Promising New Targets**
Elizabeth R. Lawlor and Carol J. Thiele
- 2780 | **The Future Is Now: Chimeric Antigen Receptors as New Targeted Therapies for Childhood Cancer**
Daniel W. Lee, David M. Barrett, Crystal Mackall, Rimas Orentas, and Stephan A. Grupp
- 2791 | **Using Germline Genomics to Individualize Pediatric Cancer Treatments**
Navin Pinto, Susan L. Cohn, and M. Eileen Dolan

Perspective

- 2801 | **Disrupting the Networks of Cancer**
Daniel F. Camacho and Kenneth J. Pienta

Review

- 2809 | **Pharmacogenomics in Early-Phase Oncology Clinical Trials: Is There a Sweet Spot in Phase II?**
Peter H. O'Donnell and Walter M. Stadler

HUMAN CANCER BIOLOGY

- 2817 | **Suppression of Skeletal Muscle Turnover in Cancer Cachexia: Evidence from the Transcriptome in Sequential Human Muscle Biopsies**
Iain J. Gallagher, Nathan A. Stephens, Alisdair J. MacDonald, Richard J.E. Skipworth, Holger Husi, Carolyn A. Greig, James A. Ross, James A. Timmons, and Kenneth C.H. Fearon
- 2828 | **MAX Mutations Cause Hereditary and Sporadic Pheochromocytoma and Paranglioma**
Nelly Burnichon, Alberto Cascón, Francesca Schiavi, Nicole Paes Morales, Iñaki Comino-Méndez, Nasséra Abermil, Lucía Inglada-Pérez, Aguirre A. de Cubas, Laurence Amar, Marta Barontini, Sandra Bernaldo de Quirós, Jérôme Bertherat, Yves-Jean Bignon, Marinus J. Blok, Sara Bobisse, Salud Borrego, Maurizio Castellano, Philippe Chanson, María-Dolores Chiara, Eleonora P.M. Corssmit, Mara Giacchè, Ronald R. de Krijger, Tonino Ercolino, Xavier Girerd, Encarna B. Gómez-García, Álvaro Gómez-Graña, Isabelle Guilhem, Frederik J. Hes, Emiliano Honrado, Esther Korpershoek, Jacques W.M. Lenders, Rocío Letón, Arjen R. Mensenkamp, Anna Merlo, Luigi Mori, Arnaud Murat, Peggy Pierre, Pierre-François Plouin, Tamara Prodanov, Miguel Quesada-Charneco, Nan Qin, Elena Rapizzi, Victoria Raymond, Nicole Reisch, Giovanna Roncador, Macarena Ruiz-Ferrer, Frank Schillo, Alexander P.A. Stegmann, Carlos Suarez, Elisa Taschin, Henri J.L.M. Timmers, Carli M.J. Tops, Miguel Urioste, Felix Beuschlein, Karel Pacak, Massimo Mannelli, Patricia L. M. Dahia, Giuseppe Opocher, Graeme Eisenhofer, Anne-Paule Gimenez-Roqueplo, and Mercedes Robledo

- 2838 **Molecular Profiling of Pancreatic Neuroendocrine Tumors in Sporadic and Von Hippel-Lindau Patients**
Daniela Speisky, Aurélie Duces, Ivan Bièche, Vinciane Rebours, Pascal Hammel, Alain Sauvanet, Stéphane Richard, Pierre Bedossa, Michel Vidaud, Arnaud Murat, Patricia Niccoli, Jean-Yves Scoazec, Philippe Ruzsniwski, and Anne Couvelard for the GTE Group (Groupe d'Etude des Tumeurs Endocrines)

CANCER THERAPY: PRECLINICAL

- 2850 **Lyn Kinase Mediates Cell Motility and Tumor Growth in EGFRvIII-Expressing Head and Neck Cancer**
Sarah E. Wheeler, Elena M. Morariu, Joseph S. Bednash, Charlton G. Otte, Raja R. Seethala, Simion I. Chiosea, and Jennifer R. Grandis
- 2861 **L-BLP25 Vaccine plus Letrozole Induces a T_H1 Immune Response and Has Additive Antitumor Activity in MUC1-Expressing Mammary Tumors in Mice**
Neelima R. Mehta, Gregory T. Wurz, Rebekah A. Burich, Brittany E. Greenberg, Stephen Griffey, Audrey Gutierrez, Katie E. Bell, Jamie L. McCall, Michael Wolf, and Michael DeGregorio

IMAGING, DIAGNOSIS, PROGNOSIS

- 2872 **Tumor Infiltrating Immune Cells and Outcome of Merkel Cell Carcinoma: A Population-Based Study**
Harri Sihto, Tom Böhling, Heli Kavola, Virve Koljonen, Marko Salmi, Sirpa Jalkanen, and Heikki Joensuu
- 2882 **Global Methylation Profiling for Risk Prediction of Prostate Cancer**
Saswati Mahapatra, Eric W. Klee, Charles Y.F. Young, Zhifu Sun, Rafael E. Jimenez, George G. Klee, Donald J. Tindall, and Krishna Vanaja Donkena
- 2896 **Correlation of ERG Expression and DNA Methylation Biomarkers with Adverse Clinicopathologic Features of Prostate Cancer**
Ken Kron, Liyang Liu, Dominique Trudel, Vaijayanti Pethe, John Trachtenberg, Neil Fleshner, Bharati Bapat, and Theodorus van der Kwast

CANCER THERAPY: CLINICAL

- 2905 **Metformin Use Is Associated with Better Survival of Diabetic Patients with Pancreatic Cancer**
Navid Sadeghi, James L. Abbruzzese, Sai-Ching J. Yeung, Manal Hassan, and Donghui Li
See commentary p. 2723
- 2913 **Pharmacokinetics and Repolarization Effects of Intravenous and Transdermal Granisetron**
Jay W. Mason, Daniel S. Selness, Thomas E. Moon, Bridget O'Mahony, Peter Donachie, and Julian Howell
- 2922 **Survival of 1,181 Patients in a Phase I Clinic: The MD Anderson Clinical Center for Targeted Therapy Experience**
Jennifer Wheler, Apostolia M. Tsimberidou, David Hong, Aung Naing, Gerald Falchook, Sarina Piha-Paul, Siqing Fu, Stacy Moulder, Bettzy Stephen, Sijin Wen, and Razelle Kurzrock
- 2930 **Microarray Analysis Verifies Two Distinct Phenotypes of Glioblastomas Resistant to Antiangiogenic Therapy**
Michael DeLay, Arman Jahangiri, W. Shawn Carbonell, Yu-Long Hu, Sean Tsao, Maxwell Wing Tom, Jesse Paquette, Taku A. Tokuyasu, and Manish K. Aghi
- 2943 **Analysis of Spontaneous Tumor-Specific CD4 T-cell Immunity in Lung Cancer Using Promiscuous HLA-DR Telomerase-Derived Epitopes: Potential Synergistic Effect with Chemotherapy Response**
Yann Godet, Elizabeth Fabre, Magalie Dosset, Michele Lamuraglia, Emeline Levionnois, Patrice Ravel, Nadine Benhamouda, Aurélie Cazes, Françoise Le Pimpec-Barthes, Beatrice Gaugler, Pierre Langlade-Demoyen, Xavier Pivot, Philippe Saas, Bernard Maillère, Eric Tartour, Christophe Borg, and Olivier Adotévi
- 2954 **Pharmacokinetics and Safety of Bortezomib in Patients with Advanced Malignancies and Varying Degrees of Liver Dysfunction: Phase I NCI Organ Dysfunction Working Group Study NCI-6432**
Patricia M. LoRusso, Karthik Venkatakrishnan, Ramesh K. Ramanathan, John Sarantopoulos, Daniel Mulkerin, Stephen I. Shibata, Anne Hamilton, Afshin Dowlati, Sridhar Mani, Michelle A. Rudek, Chris H. Takimoto, Rachel Neuwirth, Dixie-Lee Esseltine, and Percy Ivy

PREDICTIVE BIOMARKERS AND PERSONALIZED MEDICINE

2987

2964 **Gender Influences the Class III and V β -Tubulin Ability to Predict Poor Outcome in Colorectal Cancer**

Marisa Mariani, Gian Franco Zannoni, Stefano Sioletic, Steven Sieber, Candice Martino, Enrica Martinelli, Claudio Coco, Giovanni Scambia, Shohreh Shahabi, and Cristiano Ferlini

2976 **An Apoptosis Methylation Prognostic Signature for Early Lung Cancer in the IFCT-0002 Trial**

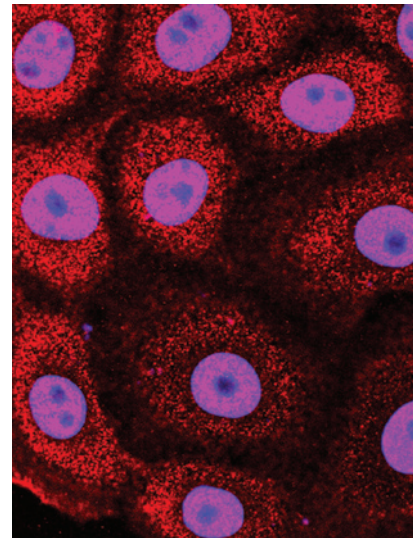
Florence de Fraipont, Guénaëlle Levallet, Christian Creveuil, Emmanuel Bergot, Michèle Beau-Faller, Mounia Mounawar, Nicolas Richard, Martine Antoine, Isabelle Rouquette, Marie-Christine Favrot, Didier Debieuvre, Denis Braun, Virginie Westeel, Elisabeth Quoix, Elisabeth Brambilla, Pierre Hainaut, Denis Moro-Sibilot, Franck Morin, Bernard Milleron, and Gérard Zalcman on behalf of the Intergroupe Francophone de Cancérologie Thoracique (IFCT)

Prognostic and Predictive Role of JWA and XRCC1 Expressions in Gastric Cancer

Shouyu Wang, Xuming Wu, Yansu Chen, Jianbing Zhang, Jingjing Ding, Yan Zhou, Song He, Yongfei Tan, Fulin Qiang, Jin Bai, Jinyan Zeng, Zhenghua Gong, Aiping Li, Gang Li, Oluf Dimitri Røe, and Jianwei Zhou

ABOUT THE COVER

Methylation of the tumor suppressor gene Ras association domain family 1A (RASSF1A) is an independent adverse prognostic factor in patients with early-stage non-small cell lung carcinoma treated in the phase III trial on perioperative chemotherapy, IFCT-0002. The cover image is a photomicrograph showing RASSF1A protein distribution in immortalized interphasic bronchial epithelial cells, HBEC3, using confocal microscopy. RASSF1A is stained in red (Alexa-fluo red-labeled secondary antibody). Nuclei are shown in light purple (DAPI). For details, see the article by de Fraipont and colleagues on page 2976 of this issue.



Clinical Cancer Research

18 (10)

Clin Cancer Res 2012;18:2721-2996.

Updated version Access the most recent version of this article at:
<http://clincancerres.aacrjournals.org/content/18/10>

E-mail alerts [Sign up to receive free email-alerts](#) related to this article or journal.

Reprints and Subscriptions To order reprints of this article or to subscribe to the journal, contact the AACR Publications Department at pubs@aacr.org.

Permissions To request permission to re-use all or part of this article, use this link <http://clincancerres.aacrjournals.org/content/18/10>.
Click on "Request Permissions" which will take you to the Copyright Clearance Center's (CCC) Rightslink site.