

Highlights of This Issue 2997

SPECIAL FEATURES

CCR Translations

- 2999 | **Serum Cholesterol and mTOR Inhibitors: Surrogate Biomarker or Epiphenomenon?**
Daniel C. Cho and Michael B. Atkins
See article p. 3188

CCR New Strategies

- 3002 | **New Strategies in Squamous Cell Carcinoma of the Lung: Identification of Tumor Drivers to Personalize Therapy**
Kathryn A. Gold, Ignacio I. Wistuba, and Edward S. Kim

CCR Drug Updates

- 3008 | **Ruxolitinib: The First FDA Approved Therapy for the Treatment of Myelofibrosis**
John Mascarenhas and Ronald Hoffman

Molecular Pathways

- 3015 | **Molecular Pathways: Interferon/Stat1 Pathway: Role in the Tumor Resistance to Genotoxic Stress and Aggressive Growth**
Nikolai N. Khodarev, Bernard Roizman, and Ralph R. Weichselbaum

Review

- 3022 | **The Prognostic Value of FoxP3+ Tumor-Infiltrating Lymphocytes in Cancer: A Critical Review of the Literature**
Ronald J. deLeeuw, Sara E. Kost, Juzer A. Kakal, and Brad H. Nelson

HUMAN CANCER BIOLOGY

- 3030 | **MARCKS Regulates Growth and Radiation Sensitivity and Is a Novel Prognostic Factor for Glioma**
John S. Jarboe, Joshua C. Anderson, Christine W. Duarte, Tapan Mehta, Somaira Nowsheen, Patricia H. Hicks, Alexander C. Whitley, Timothy D. Rohrbach, Raymond O. McCubrey, Sherard Chiu, Tamara M. Burleson, James A. Bonner, G. Yancey Gillespie, Eddy S. Yang, and Christopher D. Willey
- 3042 | **Decreased Selenium-Binding Protein 1 Enhances Glutathione Peroxidase 1 Activity and Downregulates HIF-1 α to Promote Hepatocellular Carcinoma Invasiveness**
Cheng Huang, Guangyu Ding, Chengyu Gu, Jian Zhou, Ming Kuang, Yuan Ji, Yifeng He, Tadashi Kondo, and Jia Fan
- 3054 | **Microarray Analysis of Colorectal Cancer Stromal Tissue Reveals Upregulation of Two Oncogenic miRNA Clusters**
Naohiro Nishida, Makoto Nagahara, Tetsuya Sato, Koshi Mimori, Tomoya Sudo, Fumiaki Tanaka, Kohei Shibata, Hideshi Ishii, Kenichi Sugihara, Yuichiro Doki, and Masaki Mori
- 3071 | **Aberrant L1 Cell Adhesion Molecule Affects Tumor Behavior and Chemosensitivity in Anaplastic Thyroid Carcinoma**
Koon Soon Kim, Jeong-Ki Min, Zhe Long Liang, Kyungmin Lee, Jung Uee Lee, Kwang-Hee Bae, Min Hee Lee, Seong Eun Lee, Min Jeong Ryu, Soung Jung Kim, Yong Kyoung Kim, Min Jeong Choi, Young Suk Jo, Jin-Man Kim, and Minho Shong
- 3079 | **Distinct Signal Transduction Abnormalities and Erythropoietin Response in Bone Marrow Hematopoietic Cell Subpopulations of Myelodysplastic Syndrome Patients**
Elena Spinelli, Roberto Caporale, Francesca Buchi, Erico Masala, Antonella Gozzini, Alessandro Sanna, Francesca Sassolini, Ana Valencia, Alberto Bosi, and Valeria Santini

CANCER THERAPY: PRECLINICAL

- 3090 **Bridging the Gap between Preclinical and Clinical Studies Using Pharmacokinetic–Pharmacodynamic Modeling: An Analysis of GDC-0973, a MEK Inhibitor**
Harvey Wong, Laurent Vernillet, Amy Peterson, Joseph A. Ware, Lillian Lee, Jean-Francois Martini, Peiwen Yu, Congfen Li, Geoffrey Del Rosario, Edna F. Choo, Klaus P. Hoeflich, Yongchang Shi, Blake T. Aftab, Ron Aoyama, Sanh Tan Lam, Marcia Belvin, and John Prescott
- 3100 **Carbonic Anhydrase IX Promotes Tumor Growth and Necrosis *In Vivo* and Inhibition Enhances Anti-VEGF Therapy**
Alan McIntyre, Shalini Patiar, Simon Wigfield, Ji-liang Li, Ioanna Ledaki, Helen Turley, Russell Leek, Cameron Snell, Kevin Gatter, William S. Sly, Richard D. Vaughan-Jones, Pawel Swietach, and Adrian L. Harris
- 3112 **The Effects of Chemotherapy on Cognitive Function in a Mouse Model: A Prospective Study**
Gordon Winocur, Mark Henkelman, J. Martin Wojtowicz, Haibo Zhang, Malcolm A. Binns, and Ian F. Tannock
- 3122 **Dendritic Cell–Activating Vaccine Adjuvants Differ in the Ability to Elicit Antitumor Immunity Due to an Adjuvant-Specific Induction of Immunosuppressive Cells**
Yushe Dang, Wolfgang M. Wagner, Ekram Gad, Lauren Rastetter, Carmen M. Berger, Gregory E. Holt, and Mary L. Disis

IMAGING, DIAGNOSIS, PROGNOSIS

- 3132 **Mutations in the Ras–Raf Axis Underlie the Prognostic Value of CD133 in Colorectal Cancer**
Kristel Kemper, Miranda Versloot, Katherine Cameron, Selçuk Colak, Felipe de Sousa e Melo, Joan H. de Jong, Joanne Bleackley, Louis Vermeulen, Rogier Versteeg, Jan Koster, and Jan Paul Medema
- 3142 **MSH3 Protein Expression and Nodal Status in MLH1-Deficient Colorectal Cancers**
Luigi Laghi, Paolo Bianchi, Gabriele Delconte, Giuseppe Celesti, Giuseppe Di Caro, Monica Pedroni, Anna Maria Chiaravalli, Barbara Jung, Carlo Capella, Maurizio Ponz de Leon, and Alberto Malesci

3154

SSBP2 Variants Are Associated with Survival in Glioblastoma Patients

Yuanyuan Xiao, Paul A. Decker, Terri Rice, Lucie S. McCoy, Ivan Smirnov, Joseph S. Patoka, Helen M. Hansen, Joe L. Wiemels, Tarik Tihan, Michael D. Prados, Susan M. Chang, Mitchel S. Berger, Matthew L. Kosel, Brooke L. Fridley, Daniel H. Lachance, Brian Patrick O'Neill, Jan C. Buckner, Reid C. Thompson, Louis Burt Nabors, Jeffrey J. Olson, Steve Brem, Melissa H. Madden, James E. Browning, John K. Wiencke, Kathleen M. Egan, Robert B. Jenkins, and Margaret R. Wrensch

CANCER THERAPY: CLINICAL

3163

Phase II Study of Single-Agent Navitoclax (ABT-263) and Biomarker Correlates in Patients with Relapsed Small Cell Lung Cancer

Charles M. Rudin, Christine L. Hann, Edward B. Garon, Moacyr Ribeiro de Oliveira, Philip D. Bonomi, D. Ross Camidge, Quincy Chu, Giuseppe Giaccone, Divis Khaira, Suresh S. Ramalingam, Malcolm R. Ranson, Caroline Dive, Evelyn M. McKeegan, Brenda J. Chyla, Barry L. Dowell, Arunava Chakravarty, Cathy E. Nolan, Niki Rudersdorf, Todd A. Busman, Mack H. Mabry, Andrew P. Krivoshik, Rod A. Humerickhouse, Geoffrey I. Shapiro, and Leena Gandhi

3170

Complete Longitudinal Analyses of the Randomized, Placebo-Controlled, Phase III Trial of Sunitinib in Patients with Gastrointestinal Stromal Tumor following Imatinib Failure

George D. Demetri, Christopher R. Garrett, Patrick Schöffski, Manisha H. Shah, Jaap Verweij, Serge Leyvraz, Herbert I. Hurwitz, Antonio Lopez Pousa, Axel Le Cesne, David Goldstein, Luis Paz-Ares, Jean-Yves Blay, Grant A. McArthur, Qiang (Casey) Xu, Xin Huang, Charles S. Harmon, Vanessa Tassell, Darrel P. Cohen, and Paolo G. Casali

3180

Subclinical Peripheral Neuropathy Is a Common Finding in Colorectal Cancer Patients Prior to Chemotherapy

Jessica A. Boyette-Davis, Cathy Eng, Xin S. Wang, Charles S. Cleeland, Gwen Wendelschafer-Crabb, William R. Kennedy, Donald A. Simone, Haijun Zhang, and Patrick M. Dougherty

PREDICTIVE BIOMARKERS AND PERSONALIZED MEDICINE

3197

3188

Increase in Cholesterol Predicts Survival Advantage in Renal Cell Carcinoma Patients Treated with Temsirolimus

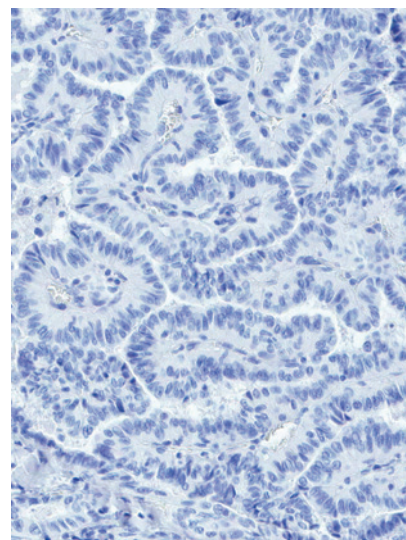
Chee Khoon Lee, Ian C. Marschner,
R. John Simes, Merryn Voysey, Brian Egleston,
Gary Hudes, and Paul de Souza
See commentary p. 2999

Multidrug Resistance–Linked Gene Signature Predicts Overall Survival of Patients with Primary Ovarian Serous Carcinoma

Jean-Pierre Gillet, Anna Maria Calcagno,
Sudhir Varma, Ben Davidson,
Mari Bunkholt Elstrand, Ram Ganapathi,
Aparna A. Kamat, Anil K. Sood,
Suresh V. Ambudkar, Michael V. Seiden,
Bo R. Rueda, and Michael M. Gottesman

ABOUT THE COVER

Aberrant L1 cell adhesion molecule (L1CAM) affects tumor behavior and chemosensitivity in anaplastic thyroid carcinoma (ATC). L1CAM is highly expressed in ATC cells, but not in nodular hyperplasia or papillary thyroid carcinoma (PTC) cells. L1CAM plays an important role in the aggressiveness of ATC by enhancing proliferation, migration, invasion, and chemoresistance. Photomicrograph showing immunohistochemical staining for L1CAM in PTC tissue. 200X magnification. For details, see the article by Kim and colleagues on page 3071 of this issue.



Clinical Cancer Research

18 (11)

Clin Cancer Res 2012;18:2997-3206.

Updated version Access the most recent version of this article at:
<http://clincancerres.aacrjournals.org/content/18/11>

E-mail alerts [Sign up to receive free email-alerts](#) related to this article or journal.

Reprints and Subscriptions To order reprints of this article or to subscribe to the journal, contact the AACR Publications Department at pubs@aacr.org.

Permissions To request permission to re-use all or part of this article, use this link <http://clincancerres.aacrjournals.org/content/18/11>.
Click on "Request Permissions" which will take you to the Copyright Clearance Center's (CCC) Rightslink site.