

Contents

Clinical Cancer Research

The Journal of Clinical and Translational Research

September 1, 2012 • Volume 18 • Number 17

Highlights of This Issue 4477

SPECIAL FEATURES

CCR Translations

- 4479 **Variants on a Theme: A Biomarker of Crizotinib Response in ALK-Positive Non-Small Cell Lung Cancer?**
Adam S. Crystal and Alice T. Shaw
See article p. 4682
- 4482 **MicroRNA Dissects Out Dangerous Pancreatic Cysts from All the Rest**
Ryan M. Thomas and Jason B. Fleming
See article p. 4713

CCR New Strategies

- 4485 **New Strategies in Pleural Mesothelioma: BAP1 and NF2 as Novel Targets for Therapeutic Development and Risk Assessment**
Marc Ladanyi, Marjorie G. Zauderer, Lee M. Krug, Tatsuo Ito, Robert McMillan, Matthew Bott, and Filippo Giancotti

CCR Perspectives in Drug Approval

- 4491 **The European Medicines Agency Review of Eribulin for the Treatment of Patients with Locally Advanced or Metastatic Breast Cancer: Summary of the Scientific Assessment of the Committee for Medicinal Products for Human Use**
Elias Pean, Sigrid Klaar, Eva Gil Berglund, Tomas Salmonson, Jeanett Borregaard, Kenneth F. Hofland, Jens Ersbøll, Eric Abadie, Rosa Giuliani, and Francesco Pignatti

Statistics in Clinical Cancer Research

- 4498 **Worth Adapting? Revisiting the Usefulness of Outcome-Adaptive Randomization**
J. Jack Lee, Nan Chen, and Guosheng Yin

Molecular Pathways

- 4508 **Molecular Pathways: Targeting Hsp90—Who Benefits and Who Does Not**
Maurizio Scaltriti, Shaheenah Dawood, and Javier Cortes

- 4514 **Molecular Pathways: Targeting the TGF- β Pathway for Cancer Therapy**
Anna L. Smith, Tyler P. Robin, and Heide L. Ford

Perspective

- 4522 **Optimizing Cancer Treatments to Induce an Acute Immune Response: Radiation Abscopal Effects, PAMPs, and DAMPs**
Charles M. Ludgate

Reviews

- 4526 **Vascular Endothelial Growth Factor Pathway Polymorphisms as Prognostic and Pharmacogenetic Factors in Cancer: A Systematic Review and Meta-analysis**
Lawson Eng, Abul Kalam Azad, Steven Habbous, Vincent Pang, Wei Xu, Anke H. Maitland-van der Zee, Sevta Savas, Helen J. Mackay, Eitan Amir, and Geoffrey Liu
- 4538 **Promising Personalized Therapeutic Options for Diffuse Large B-cell Lymphoma Subtypes with Oncogene Addictions**
James J. Steinhardt and Ronald B. Gartenhaus

HUMAN CANCER BIOLOGY

- 4549 **Survival Signals and Targets for Therapy in Breast Implant-Associated ALK⁻ Anaplastic Large Cell Lymphoma**
Melissa G. Lechner, Carolina Megiel, Connor H. Church, Trevor E. Angell, Sarah M. Russell, Rikki B. Sevell, Julie K. Jang, Garry S. Brody, and Alan L. Epstein
- 4560 **Chromosome 5q Loss in Colorectal Flat Adenomas**
Quirinus J.M. Voorham, Beatriz Carvalho, Angela J. Spiertz, Nicole C.T. van Grieken, Sandra Mongera, Eveline J.A. Rondagh, Mark A. van de Wiel, Ekaterina S. Jordanova, Bauke Ylstra, Martin Kliment, Heike Grabsch, Bjorn J. Rembacken, Tomio Arai, Adriaan P. de Bruijne, Silvia Sanduleanu, Philip Quirke, Chris J.J. Mulder, Manon van Engeland, and Gerrit A. Meijer

4570	<p>Identifying and Targeting <i>ROSI</i> Gene Fusions in Non–Small Cell Lung Cancer Kurtis D. Davies, Anh T. Le, Mariana F. Theodoro, Margaret C. Skokan, Dara L. Aisner, Eamon M. Berge, Luigi M. Terracciano, Federico Cappuzzo, Matteo Incarbone, Massimo Roncalli, Marco Alloisio, Armando Santoro, D. Ross Camidge, Marileila Varela-Garcia, and Robert C. Doebele</p>	4633	<p>Dual Targeting of mTOR and Aurora-A Kinase for the Treatment of Uterine Leiomyosarcoma Kari J. Brewer Savannah, Elizabeth G. Demicco, Kristelle Lusby, Markus PH. Ghadimi, Roman Belousov, Eric Young, Yiqun Zhang, Kai-Lieh Huang, Alexander J. Lazar, Kelly K. Hunt, Raphael E. Pollock, Chad J. Creighton, Matthew L. Anderson, and Dina Lev</p>
4580	<p>Systematic Kinome shRNA Screening Identifies <i>CDK11</i> (<i>PITSLRE</i>) Kinase Expression Is Critical for Osteosarcoma Cell Growth and Proliferation Zhenfeng Duan, Jianming Zhang, Edwin Choy, David Harmon, Xianzhe Liu, Petur Nielsen, Henry Mankin, Nathanael S. Gray, and Francis J. Hornicek</p>	4646	<p>Role of Hedgehog Signaling in Malignant Pleural Mesothelioma Yandong Shi, Ubiratan Moura, Isabelle Opitz, Alex Soltermann, Hubert Rehrauer, Svenja Thies, Walter Weder, Rolf A. Stahel, and Emanuela Felley-Bosco</p>
4589	<p>The Pivotal Role of Integrin $\beta 1$ in Metastasis of Head and Neck Squamous Cell Carcinoma Dongsheng Wang, Susan Müller, A.R.M. Ruhul Amin, Donghai Huang, Ling Su, Zhongliang Hu, Mohammad Aminur Rahman, Sreenivas Nannapaneni, Lydia Koenig, Zhengjia Chen, Mourad Tighiouart, Dong M. Shin, and Zhuo G. Chen</p>	4657	<p>An <i>In Vivo</i> Immunotherapy Screen of Costimulatory Molecules Identifies Fc-OX40L as a Potent Reagent for the Treatment of Established Murine Gliomas Katherine A. Murphy, Melissa G. Lechner, Flavia E. Popescu, Jessica Bedi, Stacy A. Decker, Peisheng Hu, Jami R. Erickson, M. Gerard O'Sullivan, Lauryn Swier, Andres M. Salazar, Michael R. Olin, Alan L. Epstein, and John R. Ohlfest</p>
CANCER THERAPY: PRECLINICAL		4669	<p>Dual Inhibition of Canonical and Noncanonical NF-κB Pathways Demonstrates Significant Antitumor Activities in Multiple Myeloma Claire Fabre, Naoya Mimura, Kathryn Bobb, Sun-Young Kong, Güllü Gorgun, Diana Cirstea, Yiguo Hu, Jiro Minami, Hiroto Ohguchi, Jie Zhang, Jeffrey Meshulam, Ruben D. Carrasco, Yu-Tzu Tai, Paul G. Richardson, Teru Hideshima, and Kenneth C. Anderson</p>
4600	<p>Dual Targeting of the Cyclin/Rb/E2F and Mitochondrial Pathways in Mantle Cell Lymphoma with the Translation Inhibitor Silvestrol Lapo Alinari, Courtney J. Prince, Ryan B. Edwards, William H. Towns, Rajeswaran Mani, Amy Lehman, Xiaoli Zhang, David Jarjoura, Li Pan, A. Douglas Kinghorn, Michael R. Grever, Robert A. Baiocchi, and David M. Lucas</p>	4682	<p>Differential Protein Stability and ALK Inhibitor Sensitivity of EML4-ALK Fusion Variants Johannes M. Heuckmann, Hyatt Balke-Want, Florian Malchers, Martin Peifer, Martin L. Sos, Mirjam Koker, Lydia Meder, Christine M. Lovly, Lukas C. Heukamp, William Pao, Ralf Küppers, and Roman K. Thomas <i>See commentary p. 4479</i></p>
4612	<p>Attenuation of the Retinoblastoma Pathway in Pancreatic Neuroendocrine Tumors Due to Increased <i>Cdk4/Cdk6</i> Laura H. Tang, Tanupriya Contractor, Richard Clausen, David S. Klimstra, Yi-Chieh Nancy Du, Peter J. Allen, Murray F. Brennan, Arnold J. Levine, and Chris R. Harris</p>	4691	<p>HDAC Inhibitors Augmented Cell Migration and Metastasis through Induction of PKCs Leading to Identification of Low Toxicity Modalities for Combination Cancer Therapy Kuen-Tyng Lin, Yi-Wei Wang, Chung-Tong Chen, Chun-Ming Ho, Wen-Hui Su, and Yuh-Shan Jou</p>
4621	<p>Targeting Aurora Kinases with Danusertib (PHA-739358) Inhibits Growth of Liver Metastases from Gastroenteropancreatic Neuroendocrine Tumors in an Orthotopic Xenograft Model Katharina Fraedrich, Jörg Schrader, Harald Ittrich, Gunhild Keller, Artur Gontarewicz, Verena Matzat, Arno Kromminga, Andrea Pace, Jürgen Moll, Michael Bläker, Ansgar W. Lohse, Dieter Hörsch, Tim H. Brümmendorf, and Daniel Benten</p>		

IMAGING, DIAGNOSIS, PROGNOSIS

4753

- 4702 **Epstein-Barr Virus Infection and Expression of B-cell Oncogenic Markers in HIV-Related Diffuse Large B-cell Lymphoma**
Chun Chao, Michael J. Silverberg, Otoniel Martínez-Maza, Margaret Chi, Donald I. Abrams, Reina Haque, Hongbin D. Zha, Michelle McGuire, Lanfang Xu, and Jonathan Said
- 4713 **miRNA Biomarkers in Cyst Fluid Augment the Diagnosis and Management of Pancreatic Cysts**
Hanno Matthaei, Dennis Wylie, Maura B. Lloyd, Marco Dal Molin, Jon Kempainen, Skye C. Mayo, Christopher L. Wolfgang, Richard D. Schulick, Laura Langfield, Bernard F. Andruss, Alex T. Adai, Ralph H. Hruban, Anna E. Szafranska-Schwarzbach, and Anirban Maitra
See commentary p. 4482
- 4725 **The Use of Quantitative Real-Time Reverse Transcriptase PCR for 5' and 3' Portions of *ALK* Transcripts to Detect *ALK* Rearrangements in Lung Cancers**
Rui Wang, Yunjian Pan, Chenguang Li, Haichuan Hu, Yang Zhang, Hang Li, Xiaoyang Luo, Jie Zhang, Zhaoyuan Fang, Yuan Li, Lei Shen, Hongbin Ji, David Garfield, Yihua Sun, and Haiquan Chen
- 4733 **A New Approach to Simultaneously Quantify Both TCR α - and β -Chain Diversity after Adoptive Immunotherapy**
Minying Zhang, Sourindra Maiti, Chantale Bernatchez, Helen Huls, Brian Rabinovich, Richard E. Champlin, Luis M. Vence, Patrick Hwu, Laszlo Radvanyi, and Laurence J.N. Cooper
- 4743 **CpG Island Methylator Phenotype-Positive Tumors in the Absence of *MLH1* Methylation Constitute a Distinct Subset of Duodenal Adenocarcinomas and Are Associated with Poor Prognosis**
Tao Fu, Emmanouil P. Pappou, Angela A. Guzzetta, Jana Jeschke, Ruby Kwak, Pujan Dave, Craig M. Hooker, Richard Morgan, Stephen B. Baylin, Christine A. Iacobuzio-Donahue, Christopher L. Wolfgang, and Nita Ahuja

Specific Mutations in *KRAS* Codons 12 and 13, and Patient Prognosis in 1075 *BRAF* Wild-Type Colorectal Cancers

Yu Imamura, Teppei Morikawa, Xiaoyun Liao, Paul Lochhead, Aya Kuchiba, Mai Yamauchi, Zhi Rong Qian, Reiko Nishihara, Jeffrey A. Meyerhardt, Kevin M. Haigis, Charles S. Fuchs, and Shuji Ogino

CANCER THERAPY: CLINICAL

4764

Phase I Pharmacokinetic/Pharmacodynamic Study of MLN8237, an Investigational, Oral, Selective Aurora A Kinase Inhibitor, in Patients with Advanced Solid Tumors

Andres Cervantes, Elena Elez, Desamparados Roda, Jeffrey Ecsedy, Teresa Macarulla, Karthik Venkatakrishnan, Susana Roselló, Jordi Andreu, JungAh Jung, Juan Manuel Sanchis-Garcia, Adelaida Piera, Inma Blasco, Laura Maños, José-Alejandro Pérez-Fidalgo, Howard Fingert, Jose Baselga, and Josep Tabernero

4775

Phase I Study of Aurora A Kinase Inhibitor MLN8237 in Advanced Solid Tumors: Safety, Pharmacokinetics, Pharmacodynamics, and Bioavailability of Two Oral Formulations

E. Claire Dees, Roger B. Cohen, Margaret von Mehren, Thomas E. Stinchcombe, Hua Liu, Karthik Venkatakrishnan, Mark Manfredi, Howard Fingert, Howard A. Burris III, and Jeffrey R. Infante

4785

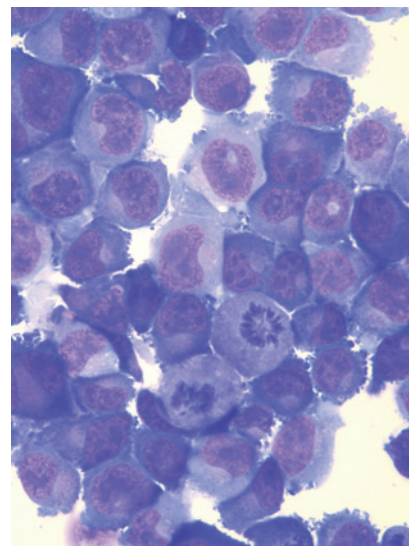
Phase I Studies of Sunitinib Alone or in Combination with Pharmacokinetic Modulators in Advanced Cancer Patients

Ezra E.W. Cohen, Kehua Wu, Christine Hartford, Masha Kocherginsky, Kimberly Napoli Eaton, Yuanyuan Zha, Anitha Nallari, Michael L. Maitland, Kammi Fox-Kay, Kristin Moshier, Larry House, Jacqueline Ramirez, Samir D. Undevia, Gini F. Fleming, Thomas F. Gajewski, and Mark J. Ratain

4794	<p>Phase I Dose-Escalation Study of the Safety, Pharmacokinetics, and Pharmacodynamics of the MEK Inhibitor RO4987655 (CH4987655) in Patients with Advanced Solid Tumors</p> <p>Suzanne Leijen, Mark R. Middleton, Patricia Tresca, Françoise Kraeber-Bodéré, Veronique Dieras, Max E. Scheulen, Avinash Gupta, Vanesa Lopez-Valverde, Zhi-Xin Xu, Ruediger Rueger, Jean J.L. Tessier, Eliezer Shochat, Steve Blotner, Valerie Meresse Naegelen, Jan H.M. Schellens, and Wilfried Ernst Erich Eberhardt</p>	4830	<p>A Phase I Single-Agent Study of Twice-Weekly Consecutive-Day Dosing of the Proteasome Inhibitor Carfilzomib in Patients with Relapsed or Refractory Multiple Myeloma or Lymphoma</p> <p>Melissa Alsina, Suzanne Trudel, Richard R. Furman, Peter J. Rosen, Owen A. O'Connor, Raymond L. Comenzo, Alvin Wong, Lori A. Kunkel, Christopher J. Molineaux, and Andre Goy</p>
4806	<p>First-in-Human, Phase I Dose-Escalation Study of the Safety, Pharmacokinetics, and Pharmacodynamics of RO5126766, a First-in-Class Dual MEK/RAF Inhibitor in Patients with Solid Tumors</p> <p>Maria Martinez-Garcia, Udai Banerji, Joan Albanell, Rastilav Bahleda, Saoirse Dolly, Françoise Kraeber-Bodéré, Federico Rojo, Emilie Routier, Ernesto Guarin, Zhi-Xin Xu, Ruediger Rueger, Jean J. L. Tessier, Eliezer Shochat, Steve Blotner, Valerie Meresse Naegelen, and Jean-Charles Soria</p>	4841	<p>Bone-Related Complications and Quality of Life in Advanced Breast Cancer: Results from a Randomized Phase III Trial of Denosumab versus Zoledronic Acid</p> <p>Miguel Martin, Richard Bell, Hugues Bourgeois, Adam Brufsky, Ingo Diel, Alexandru Eniu, Lesley Fallowfield, Yasuhiro Fujiwara, Jacek Jassem, Alexander H.G. Paterson, Diana Ritchie, Günther G. Steger, Alison Stopeck, Charles Vogel, Michelle Fan, Qi Jiang, Karen Chung, Roger Dansey, and Ada Braun</p>
4820	<p>A Phase I First-in-Human Study of TRC105 (Anti-Endoglin Antibody) in Patients with Advanced Cancer</p> <p>Lee S. Rosen, Herbert I. Hurwitz, Michael K. Wong, Jonathan Goldman, David S. Mendelson, William D. Figg, Shawn Spencer, Bonne J. Adams, Delia Alvarez, Ben K. Seon, Charles P. Theuer, Bryan R. Leigh, and Michael S. Gordon</p>	4850	<p>Myeloma-Specific Multiple Peptides Able to Generate Cytotoxic T Lymphocytes: A Potential Therapeutic Application in Multiple Myeloma and Other Plasma Cell Disorders</p> <p>Jooeun Bae, Robert Smith, John Daley, Naoya Mimura, Yu-Tzu Tai, Kenneth C. Anderson, and Nikhil C. Munshi</p>
			<p>LETTER TO THE EDITOR</p>
		4861	<p>Biomarkers in Hepatocellular Carcinoma—Letter</p> <p>Nicola Personeni, Lorenza Rimassa, and Armando Santoro</p>

ABOUT THE COVER

Wright–Giemsa-stained cytospin of early passages of TLBR-2 cells in culture. This cell line derived from an aggressive breast implant-associated T-cell CD30⁺ALK⁻ anaplastic large cell lymphoma (ALCL) shows typical morphologic features, including enlarged nuclei with frequent mitotic figures, multiple prominent nucleoli, pale cytoplasm with vesiculation, and occasional multinucleated giant cells (original magnification, ×400). Along with TLBR-1 and -3, it represents a new model for breast implant-associated ALCL and is characterized by a near triploid karyotype, specific chemotherapy drug sensitivities, and high expression of several pathway signals including Notch1, survivin, antiapoptotic genes, IL-6 and IL-2 autocrine cytokines, and STAT3, which seem to be associated with the oncogenesis and growth for these unique cancers. For details, see the article by Lechner and colleagues on page 4549 of this issue.



Clinical Cancer Research

18 (17)

Clin Cancer Res 2012;18:4477-4861.

Updated version Access the most recent version of this article at:
<http://clincancerres.aacrjournals.org/content/18/17>

E-mail alerts [Sign up to receive free email-alerts](#) related to this article or journal.

Reprints and Subscriptions To order reprints of this article or to subscribe to the journal, contact the AACR Publications Department at pubs@aacr.org.

Permissions To request permission to re-use all or part of this article, use this link <http://clincancerres.aacrjournals.org/content/18/17>.
Click on "Request Permissions" which will take you to the Copyright Clearance Center's (CCC) Rightslink site.