

Highlights of This Issue 5155

SPECIAL FEATURES

CCR Translations

5157 **The Power of Negative Thinking: Which Cells Limit Tumor Immunity?**
Siuwah Tang and Michael T. Lotze
See article p. 5212

5160 **The Promise of Patient-Derived Xenografts: The Best Laid Plans of Mice and Men**
Scott Kopetz, Robert Lemos, and Garth Powis
See article p. 5314

CCR New Strategies

5163 **New Strategies in Acute Myeloid Leukemia: Redefining Prognostic Markers to Guide Therapy**
Irum Khan, Jessica K. Altman, and Jonathan D. Licht

CCR Perspectives in Drug Approval

5172 **Rare Cancer Trial Design: Lessons from FDA Approvals**
Himabindu Gaddipati, Ke Liu, Anne Pariser, and Richard Pazdur

Statistics in Clinical Cancer Research

5179 **The Impact of Non-Drug-Related Toxicities on the Estimation of the Maximum Tolerated Dose in Phase I Trials**
Alexia Iasonos, Mrinal Gounder, David R. Spriggs, John F. Gerecitano, David M. Hyman, Sarah Zohar, and John O'Quigley

Molecular Pathways

5188 **Molecular Pathways: Context-Dependent Approaches to Notch Targeting as Cancer Therapy**
Ann Marie Egloff and Jennifer R. Grandis

5196 **Molecular Pathways: Emerging Pathways Mediating Growth, Invasion, and Metastasis of Tumors Progressing in an Irradiated Microenvironment**
François Kuonen, Chiara Secondini, and Curzio Rüegg

HUMAN CANCER BIOLOGY

5203 **Recurrent Mutations of *MYD88* and *TBLIXR1* in Primary Central Nervous System Lymphomas**
Alberto Gonzalez-Aguilar, Ahmed Idbaih, Blandine Boisselier, Naïma Habbita, Marta Rossetto, Alice Laurence, Aurélie Bruno, Anne Jouvet, Marc Polivka, Clovis Adam, Dominique Figarella-Branger, Catherine Miquel, Anne Vital, Hervé Ghesquières, Rémy Gressin, Vincent Delwail, Luc Taillandier, Olivier Chinot, Pierre Soubeyran, Emmanuel Gyan, Sylvain Choquet, Caroline Houillier, Carole Soussain, Marie-Laure Tanguy, Yannick Marie, Karima Mokhtari, and Khê Hoang-Xuan

5212 **Myeloid Cells Obtained from the Blood but Not from the Tumor Can Suppress T-cell Proliferation in Patients with Melanoma**
Alena Gros, Simon Turcotte, John R. Wunderlich, Mojgan Ahmadzadeh, Mark E. Dudley, and Steven A. Rosenberg
See commentary p. 5157

5224 **LAP⁺CD4⁺ T Cells Are Suppressors Accumulated in the Tumor Sites and Associated with the Progression of Colorectal Cancer**
Jayashri Mahalingam, Yung-Chang Lin, Jy-Ming Chiang, Po-Jung Su, Jian-He Fang, Yu-Yi Chu, Ching-Tai Huang, Cheng-Tang Chiu, and Chun-Yen Lin

5234 **Nupr1-Aurora Kinase A Pathway Provides Protection against Metabolic Stress-Mediated Autophagic-Associated Cell Death**
Tewfik Hamidi, Carla E. Cano, Daniel Grasso, Maria Noé Garcia, Maria José Sandi, Ezequiel L. Calvo, Jean-Charles Dagorn, Gwen Lomberk, Raul Urrutia, Sandro Goruppi, Arkaitz Carracedo, Guillermo Velasco, and Juan L. Iovanna

- 5247 **ALKBH3 Contributes to Survival and Angiogenesis of Human Urothelial Carcinoma Cells through NADPH Oxidase and Tweak/Fn14/VEGF Signals**
Keiji Shimada, Tomomi Fujii, Kazutake Tsujikawa, Satoshi Anai, Kiyohide Fujimoto, and Noboru Konishi
- 5256 **Alternative Cleavage and Polyadenylation during Colorectal Cancer Development**
Adam R. Morris, Arnold Bos, Begoña Diosdado, Koos Rooijers, Ran Elkon, Anne S. Bolijn, Beatriz Carvalho, Gerrit A. Meijer, and Reuven Agami
- 5267 **Pre-Invasive Ovarian Mucinous Tumors Are Characterized by CDKN2A and RAS Pathway Aberrations**
Sally M. Hunter, Kylie L. Gorringer, Michael Christie, Simone M. Rowley, David D. Bowtell, on behalf of the Australian Ovarian Cancer Study Group, and Ian G. Campbell
- 5314 **Characterization of a Large Panel of Patient-Derived Tumor Xenografts Representing the Clinical Heterogeneity of Human Colorectal Cancer**
Sylvia Julien, Ana Merino-Trigo, Ludovic Lacroix, Marc Pocard, Diane Goéré, Pascale Mariani, Sophie Landron, Ludovic Bigot, Fariba Nemati, Peggy Dartigues, Louis-Bastien Weiswald, Denis Lantuas, Loïc Morgand, Emmanuel Pham, Patrick Gonin, Virginie Dangles-Marie, Bastien Job, Philippe Dessen, Alain Bruno, Alain Pierré, Hugues De Thé, Hany Soliman, Manoel Nunes, Guillaume Lardier, Loreley Calvet, Brigitte Demers, Grégoire Prévost, Patricia Vrignaud, Sergio Roman-Roman, Olivier Duchamp, and Cyril Berthet
See commentary p. 5160
- 5329 **Oncogenic BRAF(V600E) Promotes Stromal Cell-Mediated Immunosuppression Via Induction of Interleukin-1 in Melanoma**
Jahan S. Khalili, Shujuan Liu, Tania G. Rodriguez-Cruz, Mayra Whittington, Seth Wardell, Chengwen Liu, Mingyong Zhang, Zachary A. Cooper, Dennie T. Frederick, Yufeng Li, Min Zhang, Richard W. Joseph, Chantale Bernatchez, Suhendan Ekmekcioglu, Elizabeth Grimm, Laszlo G. Radvanyi, Richard E. Davis, Michael A. Davies, Jennifer A. Wargo, Patrick Hwu, and Gregory Lizée

CANCER THERAPY: PRECLINICAL

- 5278 **Counteracting Autophagy Overcomes Resistance to Everolimus in Mantle Cell Lymphoma**
Laia Rosich, Sílvia Xargay-Torrent, Mónica López-Guerra, Elías Campo, Dolores Colomer, and Gaël Roué
- 5290 **Combined PI3K/mTOR and MEK Inhibition Provides Broad Antitumor Activity in Faithful Murine Cancer Models**
Patrick J. Roberts, Jerry E. Usary, David B. Darr, Patrick M. Dillon, Adam D. Pfefferle, Martin C. Whittle, James S. Duncan, Soren M. Johnson, Austin J. Combest, Jian Jin, William C. Zamboni, Gary L. Johnson, Charles M. Perou, and Norman E. Sharpless
- 5304 **Chemopreventive and Chemotherapeutic Actions of mTOR Inhibitor in Genetically Defined Head and Neck Squamous Cell Carcinoma Mouse Model**
Zhi-Jun Sun, Lu Zhang, Bradford Hall, Yansong Bian, J. Silvio Gutkind, and Ashok B. Kulkarni
- 5341 **EWS-FLI-1-Targeted Cytotoxic T-cell Killing of Multiple Tumor Types Belonging to the Ewing Sarcoma Family of Tumors**
Christopher H. Evans, Fangjun Liu, Ryan M. Porter, Regina P. O'Sullivan, Taha Merghoub, Elaine P. Lunsford, Kyle Robichaud, Frans Van Valen, Stephen L. Lessnick, Mark C. Gebhardt, and James W. Wells
- 5352 **CSPG4 as a Target of Antibody-Based Immunotherapy for Malignant Mesothelioma**
Zeyana Rivera, Soldano Ferrone, Xinhui Wang, Sandro Jube, Haining Yang, Harvey I. Pass, Shreya Kanodia, Giovanni Gaudino, and Michele Carbone
- 5364 **Effects of Selective Checkpoint Kinase 1 Inhibition on Cytarabine Cytotoxicity in Acute Myelogenous Leukemia Cells *In Vitro***
Erin L. Schenk, Brian D. Koh, Karen S. Flatten, Kevin L. Peterson, David Parry, Allan D. Hess, B. Douglas Smith, Judith E. Karp, Larry M. Karnitz, and Scott H. Kaufmann

5374 **Anti-DLL4 Has Broad Spectrum Activity in Pancreatic Cancer Dependent on Targeting DLL4-Notch Signaling in Both Tumor and Vasculature Cells**
Wan-Ching Yen, Marcus M. Fischer, Mark Hynes, Jingjiang Wu, Edward Kim, Lucia Beviglia, V. Pete Yeung, Xiaomei Song, Ann M. Kapoun, John Lewicki, Austin Gurney, Diane M. Simeone, and Timothy Hoey

5387 **The CXCL12–CXCR4 Chemokine Pathway: A Novel Axis Regulates Lymphangiogenesis**
Wei Zhuo, Lin Jia, Nan Song, Xin-an Lu, Yanping Ding, Xiaofeng Wang, Xiaomin Song, Yan Fu, and Yongzhang Luo

5399 **Lurbinectedin (PM01183), a New DNA Minor Groove Binder, Inhibits Growth of Orthotopic Primary Graft of Cisplatin-Resistant Epithelial Ovarian Cancer**
August Vidal, Clara Muñoz, María-José Guillén, Jemina Moretó, Sara Puertas, María Martínez-Iniesta, Agnés Figueras, Laura Padullés, Francisco J. García-Rodríguez, Mireia Berdiel-Acer, Miguel A. Pujana, Ramón Salazar, Marta Gil-Martin, Lola Martí, Jordi Ponce, David G. Molleví, Gabriel Capella, Enric Condom, Francesc Viñals, Dori Huertas, Carmen Cuevas, Manel Esteller, Pablo Avilés, and Alberto Villanueva

5412 **Identification of Galanin and Its Receptor GalR1 as Novel Determinants of Resistance to Chemotherapy and Potential Biomarkers in Colorectal Cancer**
Leanne Stevenson, Wendy L. Allen, Richard Turkington, Puthen V. Jithesh, Irina Proutski, Gail Stewart, Heinz-Josef Lenz, Sandra Van Schaeybroeck, Daniel B. Longley, and Patrick G. Johnston

IMAGING, DIAGNOSIS, PROGNOSIS

5427 **Exploratory Clinical Trial of (4S)-4-(3-[¹⁸F]fluoropropyl)-L-glutamate for Imaging x_C⁻ Transporter Using Positron Emission Tomography in Patients with Non–Small Cell Lung or Breast Cancer**
Sora Baek, Chang-Min Choi, Sei Hyun Ahn, Jong Won Lee, Gyungyub Gong, Jin-Sook Ryu, Seung Jun Oh, Claudia Bacher-Stier, Lüder Fels, Norman Koglin, Christina Hultsch, Christoph A. Schatz, Ludger M. Dinkelborg, Erik S. Mittra, Sanjiv S. Gambhir, and Dae Hyuk Moon

5438 **Secreted Protein Acidic and Rich in Cysteines-like 1 Suppresses Aggressiveness and Predicts Better Survival in Colorectal Cancers**
Hanguang Hu, Hang Zhang, Weiting Ge, Xiyong Liu, Sofia Loera, Peiguo Chu, Huarong Chen, Jiaping Peng, Lun Zhou, Shujing Yu, Ying Yuan, Suzhan Zhang, Lily Lai, Yun Yen, and Shu Zheng

CANCER THERAPY: CLINICAL

5449 **Phase I Clinical Trial of Mixed Bacterial Vaccine (Coley's Toxins) in Patients with NY-ESO-1 Expressing Cancers: Immunological Effects and Clinical Activity**
Julia Karbach, Antje Neumann, Kathrin Brand, Claudia Wahle, Ekkehard Siegel, Markus Maeurer, Erika Ritter, Takamasa Tsuji, Sacha Gnjatich, Lloyd J. Old, Gerd Ritter, and Elke Jäger

5460 **Vaccination with mRNA-Electroporated Dendritic Cells Induces Robust Tumor Antigen-Specific CD4⁺ and CD8⁺ T Cells Responses in Stage III and IV Melanoma Patients**
Erik H. J. G. Aarntzen, Gerty Schreiber, Kalijn Bol, W. Joost Lesterhuis, Alexandra J. Croockewit, Johannes H. W. de Wilt, Michelle M. van Rossum, Willeke A. M. Blokx, Joannes F. M. Jacobs, Tjitske Duiveman-de Boer, Danita H. Schuurhuis, Roel Mus, Kris Thielemans, I. Jolanda M. de Vries, Carl G. Figdor, Cornelis J. A. Punt, and Gosse J. Adema

5471 **Prostate Cancer Mortality following Active Surveillance versus Immediate Radical Prostatectomy**
Jing Xia, Bruce J. Trock, Matthew R. Cooperberg, Roman Gulati, Steven B. Zeliadt, John L. Gore, Daniel W. Lin, Peter R. Carroll, H. Ballentine Carter, and Ruth Etzioni

5479 **The Relationship Between Homologous Recombination Repair and the Sensitivity of Human Epidermis to the Size of Daily Doses Over a 5-Week Course of Breast Radiotherapy**
Navita Somaiah, John Yarnold, Frances Daley, Ann Pearson, Lone Gothard, Kai Rothkamm, and Thomas Helleday

5489

A Phase I Trial of Dasatinib, an Src-Family Kinase Inhibitor, in Combination with Paclitaxel and Carboplatin in Patients with Advanced or Recurrent Ovarian Cancer

Angeles Alvarez Secord, Deanna K. Teoh, William T. Barry, Miao Yu, Gloria Broadwater, Laura J. Havrilesky, Paula S. Lee, Andrew Berchuck, Johnathan Lancaster, and Robert M. Wenham

5507

Genome-Wide Association Study of Prognosis in Advanced Non-Small Cell Lung Cancer Patients Receiving Platinum-Based Chemotherapy

Lingmin Hu, Chen Wu, Xueying Zhao, Rebecca Heist, Li Su, Yang Zhao, Baohui Han, Songyu Cao, Minjie Chu, Juncheng Dai, Jing Dong, Yongqian Shu, Lin Xu, Yijiang Chen, Yi Wang, Feng Lu, Yue Jiang, Dianke Yu, Hongyan Chen, Wen Tan, Hongxia Ma, Jiaping Chen, Guangfu Jin, Tangchun Wu, Daru Lu, David C. Christiani, Dongxin Lin, Zhibin Hu, and Hongbing Shen

PREDICTIVE BIOMARKERS AND PERSONALIZED MEDICINE

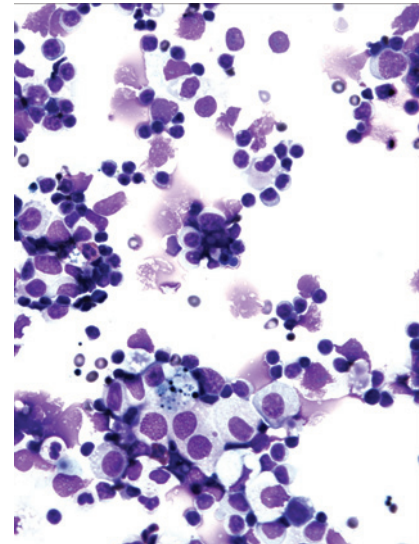
5499

Thalidomide in Total Therapy 2 Overcomes Inferior Prognosis of Myeloma with Low Expression of the Glucocorticoid Receptor Gene *NR3C1*

Christoph J. Heuck, Jackie Szymonifka, Emily Hansen, John D. Shaughnessy Jr, Saad Z. Usmani, Frits van Rhee, Elias Anaissie, Bijay Nair, Sarah Waheed, Yazan Alsayed, Nathan Petty, Clyde Bailey, Joshua Epstein, Antje Hoering, John Crowley, and Bart Barlogie

ABOUT THE COVER

Multiple cell types coexist in the melanoma tumor microenvironment. Small 2–4 mm fragments of a melanoma tumor were digested during 1 h to obtain a single cell suspension. Cytospin of the tumor single cell suspension was stained with a modified Wright-Giemsa stain using Diff-Quick. Representative photograph (400×) displays morphologically distinct cell types that could be identified as tumor cells, lymphocytes, eosinophils, neutrophils, and macrophages. For details, see the article by Gros and colleagues on page 5212 of this issue.



Clinical Cancer Research

18 (19)

Clin Cancer Res 2012;18:5155-5514.

Updated version Access the most recent version of this article at:
<http://clincancerres.aacrjournals.org/content/18/19>

E-mail alerts [Sign up to receive free email-alerts](#) related to this article or journal.

Reprints and Subscriptions To order reprints of this article or to subscribe to the journal, contact the AACR Publications Department at pubs@aacr.org.

Permissions To request permission to re-use all or part of this article, use this link <http://clincancerres.aacrjournals.org/content/18/19>.
Click on "Request Permissions" which will take you to the Copyright Clearance Center's (CCC) Rightslink site.