

Highlights of This Issue 321

SPECIAL FEATURES

CCR Translations

- 323 | **BAP1ism of a Tumor Suppressor**
Scott E. Woodman
See article p. 408

Molecular Pathways

- 326 | **Molecular Pathways: Osteoclast-Dependent and Osteoclast-Independent Roles of the RANKL/RANK/OPG Pathway in Tumorigenesis and Metastasis**
William C. Dougall

Perspective

- 336 | **New Challenges in Endpoints for Drug Development in Advanced Melanoma**
Antoni Ribas, Peter Hersey, Mark R. Middleton, Helen Gogas, Keith T. Flaherty, Vernon K. Sondak, and John M. Kirkwood

Review

- 342 | **Multiple Myeloma Mesenchymal Stem Cells: Characterization, Origin, and Tumor-Promoting Effects**
Michaela R. Reagan and Irene M. Ghobrial

HUMAN CANCER BIOLOGY

- 350 | **Molecular Analysis of Colorectal Tumors within a Diverse Patient Cohort at a Single Institution**
Brooke E. Sylvester, Dezheng Huo, Andrey Khramtsov, Jing Zhang, Rana V. Smalling, Sope Olugbile, Blase N. Polite, and Olufunmilayo I. Olopade

- 360 | **A Noncanonical Flt3ITD/NF- κ B Signaling Pathway Represses *DAPK1* in Acute Myeloid Leukemia**
Rajasubramaniam Shanmugam, Padmaja Gade, Annique Wilson-Weekes, Hamid Sayar, Attaya Suvannasankha, Chirayu Goswami, Lang Li, Sushil Gupta, Angelo A. Cardoso, Tareq Al Baghdadi, Katie J. Sargent, Larry D. Cripe, Dhananjaya V. Kalvakolanu, and H. Scott Boswell

- 370 | **Punctate LC3B Expression Is a Common Feature of Solid Tumors and Associated with Proliferation, Metastasis, and Poor Outcome**
Rossitza Lazova, Robert L. Camp, Vincent Klump, Summar F. Siddiqui, Ravi K. Amaravadi, and John M. Pawelek

- 380 | **Ran Is a Potential Therapeutic Target for Cancer Cells with Molecular Changes Associated with Activation of the PI3K/Akt/mTORC1 and Ras/MEK/ERK Pathways**
Hui-Fung Yuen, Ka-Kui Chan, Claire Grills, James T. Murray, Angela Platt-Higgins, Osama Sharaf Eldin, Ken O'Byrne, Pasi Janne, Dean A. Fennell, Patrick G. Johnston, Philip S. Rudland, and Mohamed El-Tanani

- 392 | **Serum Interleukin-6, Insulin, and HOMA-IR in Male Individuals with Colorectal Adenoma**
Yu Sasaki, Hiroaki Takeda, Takeshi Sato, Tomohiko Orii, Shoichi Nishise, Ko Nagino, Daisuke Iwano, Takao Yaoita, Kazuya Yoshizawa, Hideki Saito, Yasuhisa Tanaka, and Sumio Kawata

- 400 | **Lifetime Cancer Risks in Individuals with Germline *PTEN* Mutations**
Min-Han Tan, Jessica L. Mester, Joanne Ngeow, Lisa A. Rybicki, Mohammed S. Orloff, and Charis Eng

CANCER THERAPY: PRECLINICAL

- 408 | **Histone Deacetylase Inhibitors Induce Growth Arrest and Differentiation in Uveal Melanoma**
Solange Landreville, Olga A. Agapova, Katie A. Matatall, Zachary T. Kneass, Michael D. Onken, Ryan S. Lee, Anne M. Bowcock, and J. William Harbour
See commentary p. 323

- 417 | **Leflunomide Induces Apoptosis in Fludarabine-Resistant and Clinically Refractory CLL Cells**
Sascha Dietrich, Oliver H. Krämer, Esther Hahn, Claudia Schäfer, Thomas Giese, Michael Hess, Theresa Tretter, Michael Rieger, Jennifer Hüllein, Thorsten Zenz, Anthony D. Ho, Peter Dreger, and Thomas Luft

- 432 **Anti-EGFR Antibody Cetuximab Enhances the Cytolytic Activity of Natural Killer Cells toward Osteosarcoma**
Jens H.W. Pahl, S. Eriaty N. Ruslan, Emilie P. Buddingh, Susy J. Santos, Karoly Szuhai, Massimo Serra, Hans Gelderblom, Pancras C.W. Hogendoorn, R. Maarten Egeler, Marco W. Schilham, and Arjan C. Lankester
- 442 **Bexarotene via CBP/p300 Induces Suppression of NF- κ B-Dependent Cell Growth and Invasion in Thyroid Cancer**
Audrey Cras, Béatrice Politis, Nicole Balitrand, Diane Darsin-Bettinger, Pierre Yves Boelle, Bruno Cassinat, Marie-Elisabeth Toubert, and Christine Chomienne
- 454 **Targeting Tumor-Associated Endothelial Cells: Anti-VEGFR2 Immunoliposomes Mediate Tumor Vessel Disruption and Inhibit Tumor Growth**
Andreas Wicki, Christoph Rochlitz, Annette Orleth, Reto Ritschard, Imke Albrecht, Richard Herrmann, Gerhard Christofori, and Christoph Mamot
- 465 **EpCAM/CD3-Bispecific T-cell Engaging Antibody MT110 Eliminates Primary Human Pancreatic Cancer Stem Cells**
Michele Cioffi, Jorge Dorado, Patrick A. Baeuerle, and Christopher Heeschen
- 475 **CPTH6, a Thiazole Derivative, Induces Histone Hypoacetylation and Apoptosis in Human Leukemia Cells**
Daniela Trisciuglio, Ylenia Ragazzoni, Andrea Pelosi, Marianna Desideri, Simone Carradori, Chiara Gabellini, Giovanna Maresca, Riccardo Nescatelli, Daniela Secci, Adriana Bolasco, Bruna Bizzarri, Chiara Cavaliere, Igea D'Agno, Patrizia Filetici, Lucia Ricci-Vitiani, Maria Giulia Rizzo, and Donatella Del Bufalo
- 487 **Tipping the Noxa/Mcl-1 Balance Overcomes ABT-737 Resistance in Chronic Lymphocytic Leukemia**
Jacqueline M. Tromp, Christian R. Geest, Esther C.W. Breij, Judith A. Elias, Jacoline van Laar, Dieuwertje M. Luijks, Arnon P. Kater, Tim Beaumont, Marinus H.J. van Oers, and Eric Eldering
- 499 **VTX-2337 Is a Novel TLR8 Agonist That Activates NK Cells and Augments ADCC**
Hailing Lu, Gregory N. Dietsch, Maura-Ann H. Matthews, Yi Yang, Smita Ghanekar, Margaret Inokuma, Maria Suni, Vernon C. Maino, Katherine E. Henderson, James Jeffrey Howbert, Mary L. Disis, and Robert M. Hershberg

- 510 **Iniparib Nonselectively Modifies Cysteine-Containing Proteins in Tumor Cells and Is Not a *Bona Fide* PARP Inhibitor**
Xuesong Liu, Yan Shi, David X. Maag, Joann P. Palma, Melanie J. Patterson, Paul A. Ellis, Bruce W. Surber, Damien B. Ready, Niru B. Soni, Uri S. Ladrór, Allison J. Xu, Ramesh Iyer, John E. Harlan, Larry R. Solomon, Cherrie K. Donawho, Thomas D. Penning, Eric F. Johnson, and Alexander R. Shoemaker

IMAGING, DIAGNOSIS, PROGNOSIS

- 524 **Loss of 18q22.3 Involving the Carboxypeptidase of Glutamate-like Gene Is Associated with Poor Prognosis in Resected Pancreatic Cancer**
Jih-Hsiang Lee, Elisa Giovannetti, Jin-Hyeok Hwang, Iacopo Petrini, Qiuyan Wang, Johannes Voortman, Yonghong Wang, Seth M. Steinberg, Niccola Funel, Paul S. Meltzer, Yisong Wang, and Giuseppe Giaccone
- 534 **MicroRNA Molecular Profiles Associated with Diagnosis, Clinicopathologic Criteria, and Overall Survival in Patients with Resectable Pancreatic Ductal Adenocarcinoma**
Nigel B. Jamieson, Douglas C. Morran, Jennifer P. Morton, Asif Ali, Euan J. Dickson, C. Ross Carter, Owen J. Sansom, T.R. Jeffrey Evans, Colin J. McKay, and Karin A. Oien
- 546 **Association of HER2/ErbB2 Expression and Gene Amplification with Pathologic Features and Prognosis in Esophageal Adenocarcinomas**
Harry H. Yoon, Qian Shi, William R. Sukov, Anne E. Wiktor, Maliha Khan, Christopher A. Sattler, Axel Grothey, Tsung-Teh Wu, Robert B. Diasio, Robert B. Jenkins, and Frank A. Sinicrope

CANCER THERAPY: CLINICAL

- 555 **Phase II, Open-Label, Randomized Trial of the MEK1/2 Inhibitor Selumetinib as Monotherapy versus Temozolomide in Patients with Advanced Melanoma**
John M. Kirkwood, Lars Bastholt, Caroline Robert, Jeff Sosman, James Larkin, Peter Hersey, Mark Middleton, Mireille Cantarini, Victoria Zazulina, Karin Kemsley, and Reinhard Dummer

Phase I, Dose-Escalation Trial of the Oral Cyclin-Dependent Kinase 4/6 Inhibitor PD 0332991, Administered Using a 21-Day Schedule in Patients with Advanced Cancer

Keith T. Flaherty, Patricia M. LoRusso, Angela DeMichele, Vandana G. Abramson, Rachel Courtney, Sophia S. Randolph, M. Naveed Shaik, Keith D. Wilner, Peter J. O'Dwyer, and Gary K. Schwartz

PREDICTIVE BIOMARKERS AND PERSONALIZED MEDICINE

577

A Genome-Wide Association Study of Overall Survival in Pancreatic Cancer Patients Treated with Gemcitabine in CALGB 80303

Federico Innocenti, Kouros Owzar, Nancy L. Cox, Patrick Evans, Michiaki Kubo, Hitoshi Zembutsu, Chen Jiang, Donna Hollis, Taisei Mushiroda, Liang Li, Paula Friedman, Liewei Wang, Dylan Glubb, Herbert Hurwitz, Kathleen M. Giacomini, Howard L. McLeod, Richard M. Goldberg, Richard L. Schilsky, Hedy L. Kindler, Yusuke Nakamura, and Mark J. Ratain

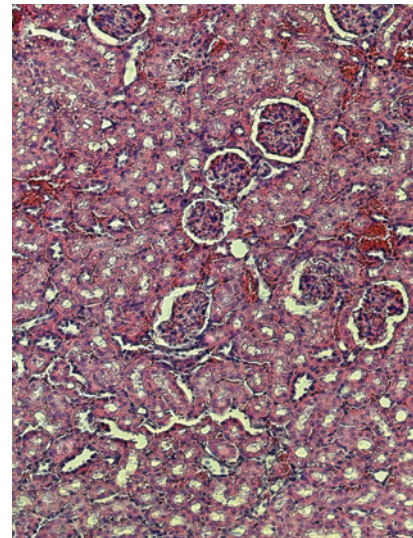
585

Genetic Variations in Epigenetic Genes Are Predictors of Recurrence in Stage I or II Non-Small Cell Lung Cancer Patients

Klaus W. Wagner, Yuanqing Ye, Jie Lin, Ara A. Vaporciyan, Jack A. Roth, and Xifeng Wu

ABOUT THE COVER

Although antiangiogenic therapies are effective and comparatively safe treatments against human cancer, renal toxicity is one of the major concerns. Anti-VEGFR2 immunoliposomes loaded with a chemotherapeutic drug showed marked antitumor activity in various tumor models. Importantly, no long-term renal side effects were evident with this therapy. This image shows a section of mouse kidneys 18 months after repeated injection of anti-VEGFR2 immunoliposomes loaded with doxorubicin. For details, see the article by Wicki and colleagues on page 454 of this issue.



Clinical Cancer Research

18 (2)

Clin Cancer Res 2012;18:321-592.

Updated version Access the most recent version of this article at:
<http://clincancerres.aacrjournals.org/content/18/2>

E-mail alerts [Sign up to receive free email-alerts](#) related to this article or journal.

Reprints and Subscriptions To order reprints of this article or to subscribe to the journal, contact the AACR Publications Department at pubs@aacr.org.

Permissions To request permission to re-use all or part of this article, use this link <http://clincancerres.aacrjournals.org/content/18/2>. Click on "Request Permissions" which will take you to the Copyright Clearance Center's (CCC) Rightslink site.