

Contents

Highlights of This Issue 5515

SPECIAL FEATURES

CCR Translations

- 5517 **Therapeutic Drug Monitoring of Imatinib—New Data Strengthen the Case**
Ian Judson
See article p. 5780

Molecular Pathways

- 5520 **Molecular Pathways: VCAM-1 as a Potential Therapeutic Target in Metastasis**
Qing Chen and Joan Massagué
- 5526 **Molecular Pathways: The Complexity of the Epigenome in Cancer and Recent Clinical Advances**
Mariasosaria Conte and Lucia Altucci

CCR Focus

- 5536 **Reinventing Cancer Cell Metabolism**
Susan E. Bates
- 5537 **Targeting Cancer Metabolism**
Beverly A. Teicher, W. Marston Linehan, and Lee J. Helman
- 5546 **c-Myc and Cancer Metabolism**
Donald M. Miller, Shelia D. Thomas, Ashraf Islam, David Muench, and Kara Sedoris
- 5554 **Pyruvate Kinase M2: Multiple Faces for Conferring Benefits on Cancer Cells**
Mayumi Tamada, Makoto Suematsu, and Hideyuki Saya
- 5562 **IDH1 and IDH2 Mutations in Tumorigenesis: Mechanistic Insights and Clinical Perspectives**
Hui Yang, Dan Ye, Kun-Liang Guan, and Yue Xiong
- 5572 **Predicting Drug Targets and Biomarkers of Cancer via Genome-Scale Metabolic Modeling**
Livnat Jerby and Eytan Ruppin

- 5585 **Targeting Hypoxia, HIF-1, and Tumor Glucose Metabolism to Improve Radiotherapy Efficacy**
Tineke W.H. Meijer,
Johannes H.A.M. Kaanders, Paul N. Span, and Johan Bussink

HUMAN CANCER BIOLOGY

- 5595 **Genomic Estimates of Aneuploid Content in Glioblastoma Multiforme and Improved Classification**
Bo Li, Yasin Senbabaoglu, Weiping Peng, Min-Lee Yang, Jishu Xu, and Jun Z. Li
- 5606 **A Comparative and Integrative Approach Identifies ATPase Family, AAA Domain Containing 2 as a Likely Driver of Cell Proliferation in Lung Adenocarcinoma**
Robert Fouret, Julien Laffaire, Paul Hofman, Michèle Beau-Faller, Julien Mazieres, Pierre Validire, Philippe Girard, Sophie Camilleri-Bröet, Fabien Vaylet, François Leroy-Ladurie, Jean-Charles Soria, and Pierre Fouret
- 5617 **14-3-3 ζ , a Novel Androgen-Responsive Gene, Is Upregulated in Prostate Cancer and Promotes Prostate Cancer Cell Proliferation and Survival**
Taro Murata, Ken-ichi Takayama, Tomohiko Urano, Tetsuya Fujimura, Daisaku Ashikari, Daisuke Obinata, Kuniko Horie-Inoue, Satoru Takahashi, Yasuyoshi Ouchi, Yukio Homma, and Satoshi Inoue

CANCER THERAPY: PRECLINICAL

- 5628 **Intracerebral CpG Immunotherapy with Carbon Nanotubes Abrogates Growth of Subcutaneous Melanomas in Mice**
Haitao Fan, Ian Zhang, Xuebo Chen, Leying Zhang, Huaqing Wang, Anna Da Fonseca, Edwin R. Manuel, Don J. Diamond, Andrew Raubitschek, and Behnam Badie

- 5639 **Carfilzomib and ONX 0912 Inhibit Cell Survival and Tumor Growth of Head and Neck Cancer and Their Activities Are Enhanced by Suppression of Mcl-1 or Autophagy**
Yan Zang, Sufi M. Thomas, Elena T. Chan, Christopher J. Kirk, Maria L. Freilino, Hannah M. DeLancey, Jennifer R. Grandis, Changyou Li, and Daniel E. Johnson
- 5650 **CCT244747 Is a Novel Potent and Selective CHK1 Inhibitor with Oral Efficacy Alone and in Combination with Genotoxic Anticancer Drugs**
Mike I. Walton, Paul D. Eve, Angela Hayes, Melanie R. Valenti, Alexis K. De Haven Brandon, Gary Box, Albert Hallsworth, Elizabeth L. Smith, Kathy J. Boxall, Michael Lainchbury, Thomas P. Matthews, Yann Jamin, Simon P. Robinson, G. Wynne Aherne, John C. Reader, Louis Chesler, Florence I. Raynaud, Suzanne A. Eccles, Ian Collins, and Michelle D. Garrett
- 5662 **Sorafenib Inhibits Hypoxia-Inducible Factor-1 α Synthesis: Implications for Antiangiogenic Activity in Hepatocellular Carcinoma**
Li-ping Liu, Rocky L. K. Ho, George G. Chen, and Paul B. S. Lai
- 5701 **Meta-Analysis of the Prognostic Value of Circulating Tumor Cells in Breast Cancer**
Liling Zhang, Sabine Riethdorf, Gang Wu, Tao Wang, Kunyu Yang, Gang Peng, Junli Liu, and Klaus Pantel
- 5711 **Challenges in the Enumeration and Phenotyping of CTC**
Frank A.W. Coumans, Sjoerd T. Ligthart, Jonathan W. Uhr, and Leon W.M.M. Terstappen
- 5719 **Loss of Heterozygosity at Tumor Suppressor Genes Detectable on Fractionated Circulating Cell-Free Tumor DNA as Indicator of Breast Cancer Progression**
Heidi Schwarzenbach, Corinna Eichelser, Jolanthe Kropidowski, Wolfgang Janni, Brigitte Rack, and Klaus Pantel
- 5731 **Integrin $\alpha_v\beta_3$ -Targeted IRDye 800CW Near-Infrared Imaging of Glioblastoma**
Ruimin Huang, Jelena Vider, Joy L. Kovar, D. Michael Olive, Ingo K. Mellingerhoff, Philipp Mayer-Kuckuk, Moritz F. Kircher, and Ronald G. Blasberg
- 5741 **Intraoperative Near-Infrared Imaging of Surgical Wounds after Tumor Resections Can Detect Residual Disease**
Brian Madajewski, Brendan F. Judy, Anas Mouchli, Veena Kapoor, David Holt, May D. Wang, Shuming Nie, and Sunil Singhal

IMAGING, DIAGNOSIS, PROGNOSIS

- 5672 **Gene Expression Signature-Based Prognostic Risk Score in Patients with Primary Central Nervous System Lymphoma**
Atsushi Kawaguchi, Yasuo Iwadate, Yoshihiro Komohara, Masakazu Sano, Koji Kajiwara, Naoki Yajima, Naoto Tsuchiya, Jumpei Homma, Hiroshi Aoki, Tsutomu Kobayashi, Yuko Sakai, Hiroaki Hondoh, Yukihiko Fujii, Tatsuyuki Kakuma, and Ryuya Yamanaka
- 5682 **A Prospective PCR-Based Screening for the *EMLA-ALK* Oncogene in Non-Small Cell Lung Cancer**
Manabu Soda, Kazutoshi Isobe, Akira Inoue, Makoto Maemondo, Satoshi Oizumi, Yuka Fujita, Akihiko Gemma, Yoshihiro Yamashita, Toshihide Ueno, Kengo Takeuchi, Young Lim Choi, Hitoshi Miyazawa, Tomoaki Tanaka, Koichi Hagiwara, and Hiroyuki Mano, for the North-East Japan Study Group and the ALK Lung Cancer Study Group
- 5690 **Prognostic Significance of Promoter DNA Methylation in Patients with Childhood Neuroblastoma**
Diana T. Lau, Luke B. Hesson, Murray D. Norris, Glenn M. Marshall, Michelle Haber, and Lesley J. Ashton

CANCER THERAPY: CLINICAL

- 5752 **A Phase I Dose-Finding Trial of Recombinant Interleukin-21 and Rituximab in Relapsed and Refractory Low Grade B-cell Lymphoproliferative Disorders**
John M. Timmerman, John C. Byrd, David J. Andorsky, Reiko E. Yamada, Janet Kramer, Natarajan Muthusamy, Naomi Hunder, and John M. Pagel
- 5761 **Mutated *BCR-ABL* Generates Immunogenic T-cell Epitopes in CML Patients**
Ann Cai, Derin B. Keskin, David S. DeLuca, Anselmo Alonso, Wandi Zhang, Guang Lan Zhang, Naa Norkor Hammond, Valentina Nardi, Richard M. Stone, Donna Neuberg, John Sidney, Vladimir Brusic, and Catherine J. Wu

5773

Clinicopathologic Features and Long-term Outcomes of NUT Midline Carcinoma

Daniel E. Bauer, Chelsey M. Mitchell, Kelly M. Strait, Christopher S. Lathan, Edward B. Stelow, Sonja C. Lüer, Somala Muhammed, Andrew G. Evans, Lynette M. Sholl, Juan Rosai, Eugenia Giraldi, Richard P. Oakley, Carlos Rodriguez-Galindo, Wendy B. London, Stephen E. Sallan, James E. Bradner, and Christopher A. French

5780

A Long-term Prospective Population Pharmacokinetic Study on Imatinib Plasma Concentrations in GIST Patients

Karel Eechoute, Martin N. Fransson, An K. Reyners, Floris A. de Jong, Alex Sparreboom, Winette T.A. van der Graaf, Lena E. Friberg, Gaia Schiavon, Erik A.C. Wiemer, Jaap Verweij, Walter J. Loos, Ron H.J. Mathijssen, and Ugo De Giorgi
See commentary p. 5517

5788

Ontogeny and Sorafenib Metabolism

Eric I. Zimmerman, Justin L. Roberts, Lie Li, David Finkelstein, Alice Gibson, Amarjit S. Chaudhry, Erin G. Schuetz, Jeffrey E. Rubnitz, Hiroto Inaba, and Sharyn D. Baker

5796

Phase I Study of the Antiangiogenic Antibody Bevacizumab and the mTOR/Hypoxia-Inducible Factor Inhibitor Temozolimide Combined with Liposomal Doxorubicin: Tolerance and Biological Activity

John Moroney, Siqing Fu, Stacy Moulder, Gerald Falchook, Thorunn Helgason, Charles Levenback, David Hong, Aung Naing, Jennifer Wheeler, and Razelle Kurzrock

PREDICTIVE BIOMARKERS AND PERSONALIZED MEDICINE

5806

Profiles of Genomic Instability in High-Grade Serous Ovarian Cancer Predict Treatment Outcome

Zhigang C. Wang, Nicolai Juul Birkbak, Aedín C. Culhane, Ronny Drapkin, Aquila Fatima, Ruiyang Tian, Matthew Schwede, Kathryn Alsop, Kathryn E. Daniels, Huiying Piao, Joyce Liu, Dariush Etemadmoghadam, Alexander Miron, Helga B. Salvesen, Gillian Mitchell, Anna DeFazio, John Quackenbush, Ross S. Berkowitz, J. Dirk Iglehart, David D.L. Bowtell; for the Australian Ovarian Cancer Study Group, and Ursula A. Matulonis

5816

Biomarkers of Response to Akt Inhibitor MK-2206 in Breast Cancer

Takafumi Sangai, Argun Akcakanat, Huiqin Chen, Emily Tarco, Yun Wu, Kim-Anh Do, Todd W. Miller, Carlos L. Arteaga, Gordon B. Mills, Ana Maria Gonzalez-Angulo, and Funda Meric-Bernstam

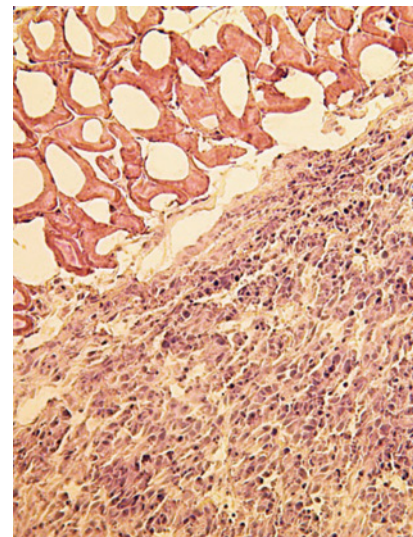
CORRECTION

5829

Correction: Molecular Profiling Reveals Low- and High-Grade Forms of Primary Melanoma

ABOUT THE COVER

This figure shows the interface between tumor and normal tissues that define the margin of a cancer. Obtaining disease-free margins remains the most challenging aspect of successful surgical resection of solid cancers. Near-infrared imaging can be used to identify the margins of tumors during surgery in order to improve disease clearance and reduce local recurrences. For details, see the article by Madajewski and colleagues on page 5741 of this issue.



Clinical Cancer Research

18 (20)

Clin Cancer Res 2012;18:5515-5829.

Updated version Access the most recent version of this article at:
<http://clincancerres.aacrjournals.org/content/18/20>

E-mail alerts [Sign up to receive free email-alerts](#) related to this article or journal.

Reprints and Subscriptions To order reprints of this article or to subscribe to the journal, contact the AACR Publications Department at pubs@aacr.org.

Permissions To request permission to re-use all or part of this article, use this link <http://clincancerres.aacrjournals.org/content/18/20>.
Click on "Request Permissions" which will take you to the Copyright Clearance Center's (CCC) Rightslink site.