

Highlights of This Issue 6569

SPECIAL FEATURES

CCR Translations

- 6571 | **Breast Cancer Treatment with Imiquimod: Applying an Old Lotion to a New Disease**
Holbrook Kohrt
See articles, p. 6668 and p. 6748

CCR Drug Updates

- 6574 | **Cabazitaxel: More Than a New Taxane for Metastatic Castrate-Resistant Prostate Cancer?**
Alain C. Mita, Robert Figlin, and Monica M. Mita

Molecular Pathways

- 6580 | **Molecular Pathways: Next-Generation Immunotherapy—Inhibiting Programmed Death-Ligand 1 and Programmed Death-1**
Daniel S. Chen, Bryan A. Irving, and F. Stephen Hodi

Review

- 6588 | **Do Imaging Biomarkers Relate to Outcome in Patients Treated with VEGF Inhibitors?**
James P.B. O'Connor and Gordon C. Jayson

HUMAN CANCER BIOLOGY

- 6599 | **Identification of *KIF5B-RET* and *GOPC-ROS1* Fusions in Lung Adenocarcinomas through a Comprehensive mRNA-Based Screen for Tyrosine Kinase Fusions**
Yoshiyuki Suehara, Maria Arcila, Lu Wang, Adnan Hasanovic, Daphne Ang, Tatsuo Ito, Yuki Kimura, Alexander Drilon, Udayan Guha, Valerie Rusch, Mark G. Kris, Maureen F. Zakowski, Naiyer Rizvi, Raya Khanin, and Marc Ladanyi

CANCER THERAPY: PRECLINICAL

- 6609 | **Mechanisms of Activity of the TORC1 Inhibitor Everolimus in Waldenstrom Macroglobulinemia**
Aldo M. Roccaro, Antonio Sacco, Xiaojing Jia, Ranjit Banwait, Patricia Maiso, Fedaa Azab, Ludmila Flores, Salomon Manier, Abdel Kareem Azab, and Irene M. Ghobrial
- 6623 | **Arylsulfonamide KCN1 Inhibits *In Vivo* Glioma Growth and Interferes with HIF Signaling by Disrupting HIF-1 α Interaction with Cofactors p300/CBP**
Shaoman Yin, Stefan Kaluz, Narra S. Devi, Adnan A. Jabbar, Rita G. de Noronha, Jiyong Mun, Zhaobin Zhang, Purushotham R. Boreddy, Wei Wang, Zhibo Wang, Thomas Abbruscato, Zhengjia Chen, Jeffrey J. Olson, Ruiwen Zhang, Mark M. Goodman, K.C. Nicolaou, and Erwin G. Van Meir
- 6634 | **HER2-Associated Radioresistance of Breast Cancer Stem Cells Isolated from HER2-Negative Breast Cancer Cells**
Nadire Duru, Ming Fan, Demet Candas, Cheikh Mena, Hsin-Chen Liu, Danupon Nantajit, Yunfei Wen, Kai Xiao, Angela Eldridge, Brett A. Chromy, Shiyong Li, Douglas R. Spitz, Kit S. Lam, Max S. Wicha, and Jian Jian Li
- 6648 | **Highly Specific Targeting of the TMPRSS2/ERG Fusion Gene Using Liposomal Nanovectors**
Longjiang Shao, Ibrahim Tekedereli, Jianghua Wang, Erkan Yuca, Susan Tsang, Anil Sood, Gabriel Lopez-Berestein, Bulent Ozpolat, and Michael Ittmann
- 6658 | **Translating the Therapeutic Potential of AZD4547 in *FGFR1*-Amplified Non-Small Cell Lung Cancer through the Use of Patient-Derived Tumor Xenograft Models**
Jingchuan Zhang, Lin Zhang, Xinying Su, Ming Li, Liang Xie, Florian Malchers, ShuQiong Fan, XiaoLu Yin, YanPing Xu, Kunji Liu, Zhengwei Dong, Guanshan Zhu, Ziliang Qian, Lili Tang, Ping Zhan, Qunsheng Ji, Elaine Kilgour, Paul D. Smith, A. Nigel Brooks, Roman K. Thomas, and Paul R. Gavine

6668 **Synergy of Topical Toll-like Receptor 7 Agonist with Radiation and Low-Dose Cyclophosphamide in a Mouse Model of Cutaneous Breast Cancer**

M. Zahidunnabi Dewan,
Claire Vanpouille-Box, Noriko Kawashima,
Sara DiNapoli, James S. Babb,
Silvia C. Formenti, Sylvia Adams, and
Sandra Demaria

See commentary, p. 6571

6679 **A Novel Therapeutic Regimen to Eradicate Established Solid Tumors with an Effective Induction of Tumor-Specific Immunity**

James R. Tysome, Xiaozhu Li,
Shengdian Wang, Pengju Wang,
Dongling Gao, Pan Du, Dong Chen,
Rathi Gangeswaran, Louisa S. Chard,
Ming Yuan, Ghassan Alusi,
Nicholas R. Lemoine, and Yaohe Wang

6690 **Ethacrynic Acid and a Derivative Enhance Apoptosis in Arsenic Trioxide-Treated Myeloid Leukemia and Lymphoma Cells: The Role of Glutathione S-Transferase P1-1**

Rui Wang, Changda Liu, Lijuan Xia,
Guisen Zhao, Janice Gabrilove,
Samuel Waxman, and Yongkui Jing

IMAGING, DIAGNOSIS, PROGNOSIS

6702 **miR-187 Is an Independent Prognostic Factor in Breast Cancer and Confers Increased Invasive Potential *In Vitro***

Laoighse Mulrane, Stephen F. Madden,
Donal J. Brennan, Gabriela Gremel,
Sharon F. McGee, Sara McNally,
Finian Martin, John P. Crown, Karin Jirstrom,
Desmond G. Higgins, William M. Gallagher,
and Darran P. O'Connor

6714 **Identification of Serum Proton NMR Metabolomic Fingerprints Associated with Hepatocellular Carcinoma in Patients with Alcoholic Cirrhosis**

Pierre Nahon, Roland Amathieu,
Mohamed N. Triba, Nadia Bouchemal,
Jean-Charles Nault, Marianne Ziol,
Olivier Seror, Gilles Dhonneur,
Jean-Claude Trinchet, Michel Beaugrand, and
Laurence Le Moyec

CANCER THERAPY: CLINICAL

6723 **Phase I and Pharmacologic Trial of Cytosine Arabinoside with the Selective Checkpoint 1 Inhibitor Sch 900776 in Refractory Acute Leukemias**

Judith E. Karp, Brian M. Thomas,
Jacqueline M. Greer, Christopher Sorge,
Steven D. Gore, Keith W. Pratz,
B. Douglas Smith, Karen S. Flatten,
Kevin Peterson, Paula Schneider,
Karen Mackey, Tomoko Freshwater,
Mark J. Levis, Michael A. McDevitt,
Hetty E. Carraway, Douglas E. Gladstone,
Margaret M. Showel, Sabine Loechner,
David A. Parry, Jo Ann Horowitz,
Randi Isaacs, and Scott H. Kaufmann

6732 **Adoptive Transfer of Autologous T Cells Improves T-cell Repertoire Diversity and Long-term B-cell Function in Pediatric Patients with Neuroblastoma**

Stephan A. Grupp, Eline Luning Prak,
Jean Boyer, Kenyetta R. McDonald,
Suzanne Shusterman, Edward Thompson,
Colleen Callahan, Abbas F. Jawad,
Bruce L. Levine, Carl H. June, and
Kathleen E. Sullivan

6742 **Increasing Use of Radical Prostatectomy for Nonlethal Prostate Cancer in Sweden**

Ruth Etzioni, Lorelei Mucci, Shu Chen,
Jan-Erik Johansson, Katja Fall, and
Hans-Olov Adami

6748 **Topical TLR7 Agonist Imiquimod Can Induce Immune-Mediated Rejection of Skin Metastases in Patients with Breast Cancer**

Sylvia Adams, Lina Kozhaya,
Frank Martiniuk, Tze-Chiang Meng,
Luis Chiriboga, Leonard Liebes,
Tsivia Hochman, Nicholas Shuman,
Deborah Axelrod, James Speyer, Yelena Novik,
Amy Tiersten, Judith D. Goldberg,
Silvia C. Formenti, Nina Bhardwaj,
Derya Unutmaz, and Sandra Demaria
See commentary, p. 6571

PREDICTIVE BIOMARKERS AND PERSONALIZED MEDICINE

6758 **Specific Lymphocyte Subsets Predict Response to Adoptive Cell Therapy Using Expanded Autologous Tumor-Infiltrating Lymphocytes in Metastatic Melanoma Patients**

Laszlo G. Radvanyi, Chantale Bernatchez, Minying Zhang, Patricia S. Fox, Priscilla Miller, Jessica Chacon, Richard Wu, Gregory Lizee, Sandy Mahoney, Gladys Alvarado, Michelle Glass, Valen E. Johnson, John D. McMannis, Elizabeth Shpall, Victor Prieto, Nicholas Papadopoulos, Kevin Kim, Jade Homsí, Agop Bedikian, Wen-Jen Hwu, Sapna Patel, Merrick I. Ross, Jeffrey E. Lee, Jeffrey E. Gershenwald, Anthony Lucci, Richard Royal, Janice N. Cormier, Michael A. Davies, Rahmatu Mansaray, Orential J. Fulbright, Christopher Toth, Renjith Ramachandran, Seth Wardell, Audrey Gonzalez, and Patrick Hwu

6771 **Phosphoinositide 3-Kinase (PI3K) Pathway Alterations Are Associated with Histologic Subtypes and Are Predictive of Sensitivity to PI3K Inhibitors in Lung Cancer Preclinical Models**

Jill M. Spoerke, Carol O'Brien, Ling Huw, Hartmut Koeppen, Jane Fridlyand, Rainer K. Brachmann, Peter M. Haverty, Ajay Pandita, Sankar Mohan, Deepak Sampath, Lori S. Friedman, Leanne Ross, Garret M. Hampton, Lukas C. Amler, David S. Shames, and Mark R. Lackner

6784

Frequent Mutational Activation of the PI3K-AKT Pathway in Trastuzumab-Resistant Breast Cancer

Sarat Chandarlapaty, Rita A. Sakr, Dilip Giri, Sujata Patil, Adriana Heguy, Monica Morrow, Shanu Modi, Larry Norton, Neal Rosen, Clifford Hudis, and Tari A. King

LETTERS TO THE EDITOR

6792

Clinicopathologic Features of V600E and V600K Melanoma—Letter

Rosalyn Jewell, Philip Chambers, Mark Harland, Jon Laye, Caroline Conway, Angana Mitra, Faye Elliott, Martin G. Cook, Andy Boon, and Julia Newton-Bishop

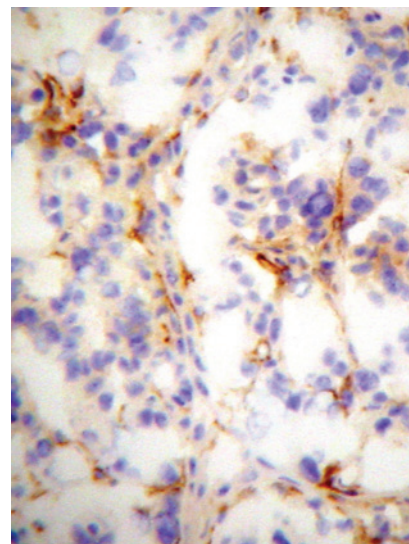
6793

Clinicopathologic Features of V600E and V600K Melanoma—Response

Alexander M. Menzies and Georgina V. Long

ABOUT THE COVER

The photomicrograph is of a metastatic, trastuzumab-refractory, HER2-amplified breast cancer with loss of PTEN expression by immunohistochemistry. The normal stromal cells interspersed in the tumor display strong PTEN staining (brown), whereas the cancer cells show complete absence of stain. The primary tumor (pretrastuzumab treatment) from this patient showed equivalent PTEN staining in the stromal cells and cancer cells. For details, see the article by Chandarlapaty and colleagues on page 6784 of this issue.



Clinical Cancer Research

18 (24)

Clin Cancer Res 2012;18:6569-6793.

Updated version Access the most recent version of this article at:
<http://clincancerres.aacrjournals.org/content/18/24>

E-mail alerts [Sign up to receive free email-alerts](#) related to this article or journal.

Reprints and Subscriptions To order reprints of this article or to subscribe to the journal, contact the AACR Publications Department at pubs@aacr.org.

Permissions To request permission to re-use all or part of this article, use this link <http://clincancerres.aacrjournals.org/content/18/24>.
Click on "Request Permissions" which will take you to the Copyright Clearance Center's (CCC) Rightslink site.