

Highlights of This Issue 2119

SPECIAL FEATURES

CCR Translations

- 2121 **Biomarkers for EGFR-Antagonist Response: In the Genes and on the Genes!**
Hariharan Easwaran and Stephen B. Baylin
See article p. 2360
- 2124 **Double Down for a Double Win**
Pearl S. Huang
See article p. 2316
- 2127 **Competing Risk Analyses: How Are They Different and Why Should You Care?**
Rick Chappell
See article p. 2301
- 2130 **Choosing Phase II Endpoints and Designs: Evaluating the Possibilities**
Michael LeBlanc and Catherine Tangen
See article p. 2309

Molecular Pathways

- 2133 **Molecular Pathways: Digoxin Use and Estrogen-Sensitive Cancers—Risks and Possible Therapeutic Implications**
Robert J. Biggar
- 2138 **Molecular Pathways: Pathogenesis and Clinical Implications of Microbiome Alteration in Esophagitis and Barrett Esophagus**
Liyang Yang, Fritz Francois, and Zhiheng Pei

Review

- 2145 **Novel Therapeutic Agents for the Management of Patients with Multiple Myeloma and Renal Impairment**
Asher A. Chanan-Khan, Jesús F. San Miguel, Sundar Jagannath, Heinz Ludwig, and Meletios A. Dimopoulos

HUMAN CANCER BIOLOGY

- 2164 **Expression of Epstein-Barr Virus–Encoded Proteins in Extranodal NK/T-cell Lymphoma, Nasal Type (ENKL): Differences in Biologic and Clinical Behaviors of LMP1-Positive and -Negative ENKL**
Naoko Kanemitsu, Yasushi Isobe, Azuchi Masuda, Shuji Momose, Morihiro Higashi, Jun-ichi Tamaru, Koichi Sugimoto, and Norio Komatsu
- 2173 **Loss of Transforming Growth Factor Beta Type II Receptor Increases Aggressive Tumor Behavior and Reduces Survival in Lung Adenocarcinoma and Squamous Cell Carcinoma**
Stephen P. Malkoski, Sarah M. Haeger, Timothy G. Cleaver, Karen J. Rodriguez, Howard Li, Shi-Long Lu, William J. Feser, Anna E. Barón, Daniel Merrick, Jessyka G. Lighthall, Hideaki Ijichi, Wilbur Franklin, and Xiao-Jing Wang

CANCER THERAPY: PRECLINICAL

- 2184 **RAF265 Inhibits the Growth of Advanced Human Melanoma Tumors**
Yingjun Su, Anna E. Vilgelm, Mark C. Kelley, Oriana E. Hawkins, Yan Liu, Kelli L. Boyd, Sara Kantrow, Ryan C. Splittergerber, Sarah P. Short, Tammy Sobolik, Snjezana Zaja-Milatovic, Kimberly Brown Dahلمان, Katayoun I. Amiri, Aixiang Jiang, Pengcheng Lu, Yu Shyr, Darrin D. Stuart, Shawn Levy, Jeffrey A. Sosman, and Ann Richmond
- 2199 **Stem-like Tumor-Initiating Cells Isolated from IL13R α 2 Expressing Gliomas Are Targeted and Killed by IL13-Zetakine–Redirected T Cells**
Christine E. Brown, Renate Starr, Brenda Aguilar, Andrew F. Shami, Catalina Martinez, Massimo D'Apuzzo, Michael E. Barish, Stephen J. Forman, and Michael C. Jensen
- 2210 **Aurora A Inhibitor (MLN8237) plus Vincristine plus Rituximab Is Synthetic Lethal and a Potential Curative Therapy in Aggressive B-cell Non-Hodgkin Lymphoma**
Daruka Mahadevan, Amy Stejskal, Laurence S. Cooke, Ann Manziello, Carla Morales, Daniel O. Persky, Richard I. Fisher, Thomas P. Miller, and Wenqing Qi

2220 **First Evidence That γ -Tocotrienol Inhibits the Growth of Human Gastric Cancer and Chemosensitizes It to Capecitabine in a Xenograft Mouse Model through the Modulation of NF- κ B Pathway**
Kanjoomana A. Manu,
Muthu K. Shanmugam,
Lalitha Ramachandran, Feng Li,
Chee Wai Fong, Alan Prem Kumar,
Patrick Tan, and Gautam Sethi

2230 **The HDAC Inhibitor LBH589 Enhances the Antimyeloma Effects of the IGF-1RTK Inhibitor Picropodophyllin**
Miguel Lemaire, Charlotte Fristedt,
Prasoon Agarwal, Eline Menu,
Els Van Valckenborgh, Elke De Bryune,
Anders Österborg, Peter Atadja, Olle Larsson,
Magnus Axelson, Ben Van Camp,
Helena Jernberg-Wiklund, and
Karin Vanderkerken

2240 **Improved Efficacy of Dendritic Cell-Based Immunotherapy by Cutaneous Laser Illumination**
Xinyuan Chen, Qiyang Zeng, and Mei X. Wu

IMAGING, DIAGNOSIS, PROGNOSIS

2250 **Cytokine *BAFF* Gene Variation Is Associated with Survival of Patients with T-cell Lymphomas**
Kan Zhai, Xiaobo Tian, Chen Wu, Ning Lu,
Jiang Chang, Liming Huang, Tongwen Zhang,
Yuling Zhou, Yan Qiao, Dianke Yu, Wen Tan,
Jieping Chen, and Dongxin Lin

2257 **Prognostic Role of *PIK3CA* Mutation in Colorectal Cancer: Cohort Study and Literature Review**
Xiaoyun Liao, Teppei Morikawa,
Paul Lochhead, Yu Imamura, Aya Kuchiba,
Mai Yamauchi, Katsuhiko Nosho,
Zhi Rong Qian, Reiko Nishihara,
Jeffrey A. Meyerhardt, Charles S. Fuchs, and
Shuji Ogino

2269 **cMET and Phospho-cMET Protein Levels in Breast Cancers and Survival Outcomes**
Kanwal P. Raghav, Wenting Wang,
Shuying Liu, Mariana Chavez-MacGregor,
Xiaolong Meng, Gabriel N. Hortobagyi,
Gordon B. Mills, Funda Meric-Bernstam,
George R. Blumenschein Jr, and
Ana M. Gonzalez-Angulo

2278 **Tumor Epidermal Growth Factor Receptor and EGFR PY1068 Are Independent Prognostic Indicators for Head and Neck Squamous Cell Carcinoma**
Sarah Wheeler, Doris R. Siwak,
Raymond Chai, Courtney LaValle,
Raja R. Seethala, Lin Wang, Kathleen Cieply,
Carol Sherer, Corwin Joy, Gordon B. Mills,
Athanasios Argiris, Jill M. Siegfried,
Jennifer R. Grandis, and Ann Marie Egloff

2290 **Plasma Biomarkers as Predictors of Outcome in Patients with Advanced Hepatocellular Carcinoma**
Josep M. Llovet, Carol E.A. Peña,
Chetan D. Lathia, Michael Shan,
Gerold Meinhardt, and Jordi Bruix on
behalf of the SHARP Investigators Study
Group

CANCER THERAPY: CLINICAL

2301 **The Use and Interpretation of Competing Risks Regression Models**
James J. Dignam, Qiang Zhang, and
Masha Kocherginsky
See commentary p. 2127

2309 **Resampling Phase III Data to Assess Phase II Trial Designs and Endpoints**
Manish R. Sharma, Theodore G. Karrison,
Yuyan Jin, Robert R. Bies, Michael L. Maitland,
Walter M. Stadler, and Mark J. Ratain
See commentary p. 2130

2316 **The Clinical Effect of the Dual-Targeting Strategy Involving PI3K/AKT/mTOR and RAS/MEK/ERK Pathways in Patients with Advanced Cancer**
Toshio Shimizu, Anthony W. Tolcher,
Kyriakos P. Papadopoulos,
Muralidhar Beeram, Drew W. Rasco,
Lon S. Smith, Shelly Gunn, Leslie Smetzer,
Theresa A. Mays, Brianne Kaiser,
Michael J. Wick, Cathy Alvarez,
Aracely Cavazos, Gina L. Mangold, and
Amita Patnaik
See commentary p. 2124

2326 **BRAF(V600) Inhibitor GSK2118436 Targeted Inhibition of Mutant BRAF in Cancer Patients Does Not Impair Overall Immune Competency**
David S. Hong, Luis Vence, Gerald Falchook,
Laszlo G. Radvanyi, Chengwen Liu,
Vicki Goodman, Jeffery J. Legos,
Sam Blackman, Antonio Scarmadio,
Razelle Kurzrock, Gregory Lizee, and
Patrick Hwu

2336 **A Phase II Study of Lapatinib in Recurrent/Metastatic Squamous Cell Carcinoma of the Head and Neck**
Jonas A. de Souza, Darren W. Davis, Yujian Zhang, Arun Khattri, Tanguy Y. Seiwert, Serdal Aktolga, Stuart J. Wong, Mark F. Kozloff, Sreenivasa Nattam, Mark W. Lingen, Rangesh Kunnavakkam, Kerstin M. Stenson, Elizabeth A. Blair, Jeffrey Bozeman, Janet E. Dancey, Everett E. Vokes, and Ezra E.W. Cohen

2344 **A Phase I Combination Study of Olaparib with Cisplatin and Gemcitabine in Adults with Solid Tumors**
Arun Rajan, Corey A. Carter, Ronan J. Kelly, Martin Gutierrez, Shivaani Kummar, Eva Szabo, Mary Ann Yancey, Jiuping Ji, Baskar Mannargudi, Sukyung Woo, Shawn Spencer, William Douglas Figg, and Giuseppe Giaccone

2352 **Whole Blood Stem Cell Reinfusion and Escalated Dose Melphalan in Castration-Resistant Prostate Cancer: A Phase I Study**
Jonathan Shamash, Jimmy Jacob, Samir Agrawal, Thomas Powles, Katherine Mutsvangwa, Peter Wilson, and Justin Stebbing

2382 **Connexin 47 Mutations Increase Risk for Secondary Lymphedema Following Breast Cancer Treatment**
David N. Finegold, Catherine J. Baty, Kelly Z. Knickelbein, Shelley Perschke, Sarah E. Noon, Diana Campbell, Jenny M. Karlsson, Diana Huang, Mark A. Kimak, Elizabeth C. Lawrence, Eleanor Feingold, Stephen D. Meriney, Adam M. Brufsky, and Robert E. Ferrell

2391 **Evaluation of Circulating Tumor Cells and Circulating Tumor DNA in Non-Small Cell Lung Cancer: Association with Clinical Endpoints in a Phase II Clinical Trial of Pertuzumab and Erlotinib**
Elizabeth A. Punnoose, Siminder Atwal, Weiqun Liu, Rajiv Raja, Bernard M. Fine, Brett G.M. Hughes, Rodney J. Hicks, Garret M. Hampton, Lukas C. Amler, Andrea Pirzkall, and Mark R. Lackner

2402 **Responsiveness of Intrinsic Subtypes to Adjuvant Anthracycline Substitution in the NCIC.CTG MA.5 Randomized Trial**
Maggie C.U. Cheang, David K. Voduc, Dongsheng Tu, Shan Jiang, Samuel Leung, Stephen K. Chia, Lois E. Shepherd, Mark N. Levine, Kathleen I. Pritchard, Sherri Davies, Inge J. Stijleman, Carole Davis, Mark T.W. Ebbert, Joel S. Parker, Matthew J. Ellis, Philip S. Bernard, Charles M. Perou, and Torsten O. Nielsen

PREDICTIVE BIOMARKERS AND PERSONALIZED MEDICINE

2360 **DNA Methylation Profiling Defines Clinically Relevant Biological Subsets of Non-Small Cell Lung Cancer**
Kim Walter, Thomas Holcomb, Tom Januario, Pan Du, Marie Evangelista, Nithya Kartha, Leonardo Iniguez, Robert Soriano, Ling Huw, Howard Stern, Zora Modrusan, Somasekar Seshagiri, Garret M. Hampton, Lukas C. Amler, Richard Bourgon, Robert L. Yauch, and David S. Shames
See commentary p. 2121

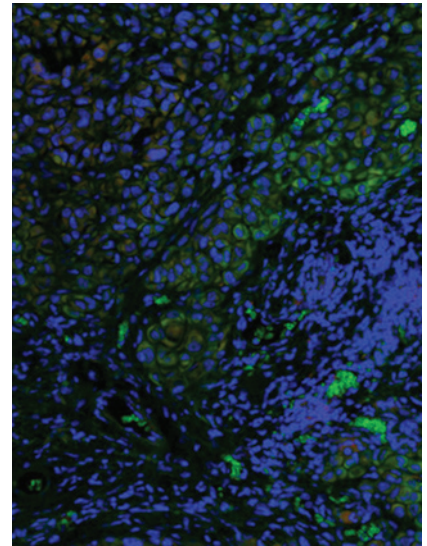
2374 **Analyzing the Pivotal Trial That Compared Sunitinib and IFN- α in Renal Cell Carcinoma, Using a Method That Assesses Tumor Regression and Growth**
Wilfred D. Stein, Julia Wilkerson, Sindy T. Kim, Xin Huang, Robert J. Motzer, Antonio Tito Fojo, and Susan E. Bates

CORRECTION

2413 **Correction: GSK1120212 (JTP-74057) Is an Inhibitor of MEK Activity and Activation with Favorable Pharmacokinetic Properties for Sustained *In Vivo* Pathway Inhibition**

ABOUT THE COVER

RAF265 greatly reduces the activation of MEK1 in melanoma patient tumors. Photomicrograph showing immunohistochemical localization of a remaining low level of active phospho-MEK1 (green) in a melanoma patient tumor that was treated with RAF265 after being implanted into a nude mouse. Nuclei are stained with DAPI and appear blue. 20X magnification. For details, see the article by Su and colleagues on page 2184 of this issue.



Clinical Cancer Research

18 (8)

Clin Cancer Res 2012;18:2119-2413.

Updated version Access the most recent version of this article at:
<http://clincancerres.aacrjournals.org/content/18/8>

E-mail alerts [Sign up to receive free email-alerts](#) related to this article or journal.

Reprints and Subscriptions To order reprints of this article or to subscribe to the journal, contact the AACR Publications Department at pubs@aacr.org.

Permissions To request permission to re-use all or part of this article, use this link <http://clincancerres.aacrjournals.org/content/18/8>.
Click on "Request Permissions" which will take you to the Copyright Clearance Center's (CCC) Rightslink site.