


Highlights of This Issue 2789

SPECIAL FEATURES

CCR Translations

- 2791 | **Microenvironmental Induced Essentiality of Autophagy**
Dean C. Singleton and Adrian L. Harris
See article, p. 2995
- 2794 | **Mouse Models of *Kras*-Mutant Colorectal Cancer: Valuable GEMMs for Drug Testing?**
Federica Di Nicolantonio and Alberto Bardelli
See article, p. 2929

CCR New Strategies

- 2797 | **New Strategies in Hodgkin Lymphoma: Better Risk Profiling and Novel Treatments**
 Catherine Diefenbach and Christian Steidl

CCR Perspectives in Drug Approval

- 2804 | **Reevaluating the Accelerated Approval Process for Oncology Drugs**
Wyndham H. Wilson, David P. Schenkein, Cheryl L. Jernigan, Janet Woodcock, and Richard L. Schilsky

Molecular Pathways

- 2810 | **Molecular Pathways: The Complex Roles of Inflammation Pathways in the Development and Treatment of Liver Cancer**
Kostas Nikolaou, Michalis Sarris, and Iannis Talianidis

Perspectives

- 2817 | **Developing Safety Criteria for Introducing New Agents into Neoadjuvant Trials**
Angela DeMichele, Donald A. Berry, JoAnne Zujewski, Sally Hunsberger, Larry Rubinstein, Joseph E. Tomaszewski, Gary Kelloff, Jane Perlmutter, Meredith Buxton, Julia Lyandres, Kathy S. Albain, Chris Benz, A. Jo Chien, Paul Haluska, Brian Leyland-Jones, Minetta C. Liu, Pamela Munster, Olufunmilayo Olopade, John W. Park, Barbara A. Parker, Lajos Pusztai, Debu Tripathy, Hope Rugo, Douglas Yee, and Laura Esserman
- 2824 | **Predictive Biomarkers for Bevacizumab: Are We There Yet?**
Dipen Maru, Alan P. Venook, and Lee M. Ellis
- 2828 | **A Proposal Regarding Reporting of *In Vitro* Testing Results**
Malcolm A. Smith and Peter Houghton

Reviews

- 2834 | **Infection and Cancer: Reevaluation of the Hygiene Hypothesis**
Katerina Oikonomopoulou, Davor Brinc, Kyriacos Kyriacou, and Eleftherios P. Diamandis
- 2842 | **Molecular Pathogenesis of Neuroendocrine Tumors: Implications for Current and Future Therapeutic Approaches**
Kjell Oberg, Oriol Casanovas, Justo P. Castaño, Daniel Chung, Gianfranco Delle Fave, Patrice Denèfle, Philip Harris, Mohid S. Khan, Matthew H. Kulke, Aldo Scarpa, Laura H. Tang, and Bertram Wiedenmann

HUMAN CANCER BIOLOGY

- 2850 | **Translation Initiation Factor eIF3b Expression in Human Cancer and Its Role in Tumor Growth and Lung Colonization**
Hong Wang, Yuanbin Ru, Marta Sanchez-Carbayo, Xuejiao Wang, Jeffrey S. Kieft, and Dan Theodorescu

- 2861 **ASS1 as a Novel Tumor Suppressor Gene in Myxofibrosarcomas: Aberrant Loss via Epigenetic DNA Methylation Confers Aggressive Phenotypes, Negative Prognostic Impact, and Therapeutic Relevance**
Hsuan-Ying Huang, Wen-Ren Wu, Yu-Hui Wang, Jun-Wen Wang, Fu-Min Fang, Jen-Wei Tsai, Shau-Hsuan Li, Hsiao-Chin Hung, Shih-Chen Yu, Jui Lan, Yow-Ling Shiue, Chung-His Hsing, Li-Tzong Chen, and Chien-Feng Li
- 2873 **Early Telomere Shortening and Genomic Instability in Tubo-Ovarian Preneoplastic Lesions**
Gautier Chene, Andrei Tchirkov, Eleonore Pierre-Eymard, Jacques Dauplat, Ines Raoelfils, Anne Cayre, Emmanuel Watkin, Philippe Vago, and Frederique Penault-Llorca
- 2883 **The Tumor-Suppressive Function of *UNC5D* and Its Repressed Expression in Renal Cell Carcinoma**
Dan Lu, Dong Dong, Yu Zhou, Min Lu, Xue-Wen Pang, Yan Li, Xiao-Jun Tian, Yu Zhang, and Jun Zhang
- 2893 **Clonal Evolution, Genomic Drivers, and Effects of Therapy in Chronic Lymphocytic Leukemia**
Peter Ouillette, Kamlai Saiya-Cork, Erlene Seymour, Cheng Li, Kerby Shedden, and Sami N. Malek
- 2905 **Myeloid Differentiation Factor 88 Promotes Growth and Metastasis of Human Hepatocellular Carcinoma**
Beibei Liang, Rui Chen, Tao Wang, Lei Cao, Yingying Liu, Fan Yin, Minhui Zhu, Xiaoyu Fan, Yingchao Liang, Lu Zhang, Yajun Guo, and Jian Zhao
- 2929 **Development of a Colon Cancer GEMM-Derived Orthotopic Transplant Model for Drug Discovery and Validation**
Eric S. Martin, Peter J. Belmont, Mark J. Sinnamon, Larissa Georgeon Richard, Jing Yuan, Erin M. Coffee, Jatin Roper, Lydia Lee, Pedram Heidari, Sophia Y. Lunt, Gautam Goel, Xiadong Ji, Zhi Xie, Tao Xie, John Lamb, Scott L. Weinrich, Todd VanArsdale, Roderick T. Bronson, Ramnik J. Xavier, Matthew G. Vander Heiden, Julie L. C. Kan, Umar Mahmood, and Kenneth E. Hung
See commentary, p. 2794
- 2941 **EMD 1214063 and EMD 1204831 Constitute a New Class of Potent and Highly Selective c-Met Inhibitors**
Friedhelm Bladt, Bettina Faden, Manja Friese-Hamim, Christine Kneuhl, Claudia Wilm, Claus Fittschen, Ulrich Grädler, Michael Meyring, Dieter Dorsch, Frank Jaehrling, Ulrich Pehl, Frank Stieber, Oliver Schadt, and Andree Blaukat
- 2952 **Colon Cancer-Specific Cytochrome P450 2W1 Converts Duocarmycin Analogues into Potent Tumor Cytotoxins**
Sandra Travica, Klaus Pors, Paul M. Loadman, Steven D. Shnyder, Inger Johansson, Mohammed N. Alandas, Helen M. Sheldrake, Souren Mkrtchian, Laurence H. Patterson, and Magnus Ingelman-Sundberg
- 2962 **Sequential Inhibitor Therapy in CML: *In Vitro* Simulation Elucidates the Pattern of Resistance Mutations after Second- and Third-Line Treatment**
Robert C. Bauer, Jana Sängler, Christian Peschel, Justus Duyster, and Nikolas von Bubnoff

CANCER THERAPY: PRECLINICAL

- 2917 **Japonicone A Suppresses Growth of Burkitt Lymphoma Cells through Its Effect on NF- κ B**
Xiaoguang Li, Xinying Yang, Yanling Liu, Nuoxi Gong, Wenbo Yao, Peizhan Chen, Jiangjiang Qin, Huizi Jin, Jingquan Li, Ruiiai Chu, Lei Shan, Ruiwen Zhang, Weidong Zhang, and Hui Wang
- 2973 **Preclinical Antitumor Activity of Cabazitaxel, a Semisynthetic Taxane Active in Taxane-Resistant Tumors**
Patricia Vrignaud, Dorothee Sémioud, Pascale Lejeune, Hervé Bouchard, Loreley Calvet, Cecile Combeau, Jean-François Riou, Alain Commerçon, François Lavelle, and Marie-Christine Bissery
- 2984 **Dual Targeting of the Type 1 Insulin-like Growth Factor Receptor and Its Ligands as an Effective Antiangiogenic Strategy**
Hemant K. Bid, Cheryl A. London, Jin Gao, Haihong Zhong, Robert E. Hollingsworth, Soledad Fernandez, Xiaokui Mo, and Peter J. Houghton

2995 **Autophagy Inhibition Sensitizes Colon Cancer Cells to Antiangiogenic and Cytotoxic Therapy**

Muthu Selvakumaran, Ravi K. Amaravadi, Irina A. Vasilevskaya, and Peter J. O'Dwyer
See commentary, p. 2791

3008 **Effects of Early Chemotherapeutic Treatment on Learning in Adolescent Mice: Implications for Cognitive Impairment and Remediation in Childhood Cancer Survivors**

Emily B. Bisen-Hersh, Philip N. Himeline, and Ellen A. Walker

3019 **In Vitro and In Vivo Antitumor Activity of a Novel Alkylating Agent, Melphalan-Flufenamide, against Multiple Myeloma Cells**



Dharminder Chauhan, Arghya Ray, Kristina Viktorsson, Jack Spira, Claudia Paba-Prada, Nikhil Munshi, Paul Richardson, Rolf Lewensohn, and Kenneth C. Anderson

IMAGING, DIAGNOSIS, PROGNOSIS

3032 **Discovery and Prevalidation of Salivary Extracellular microRNA Biomarkers Panel for the Noninvasive Detection of Benign and Malignant Parotid Gland Tumors**

Johannes H. Matse, Janice Yoshizawa, Xiaoyan Wang, David Elashoff, Jan G.M. Bolscher, Enno C.I. Veerman, Elisabeth Bloemena, and David T.W. Wong

3039 **Identification and Validation of a Blood-Based 18-Gene Expression Signature in Colorectal Cancer**

Ye Xu, Qinghua Xu, Li Yang, Xun Ye, Fang Liu, Fei Wu, Shujuan Ni, Cong Tan, Guoxiang Cai, Xia Meng, Sanjun Cai, and Xiang Du

CANCER THERAPY: CLINICAL

3050 **Phase I Trial, Pharmacokinetics, and Pharmacodynamics of Vandetanib and Dasatinib in Children with Newly Diagnosed Diffuse Intrinsic Pontine Glioma**

Alberto Broniscer, Sharyn D. Baker, Cynthia Wetmore, Atmaram S. Pai Panandiker, Jie Huang, Andrew M. Davidoff, Arzu Onar-Thomas, John C. Panetta, Thomas K. Chin, Thomas E. Merchant, Justin N. Baker, Sue C. Kaste, Amar Gajjar, and Clinton F. Stewart

3059 **Evaluation of Food Effect on Pharmacokinetics of Vismodegib in Advanced Solid Tumor Patients**

Manish R. Sharma, Theodore G. Karrison, Bethany Kell, Kehua Wu, Michelle Turcich, David Geary, Soonmo P. Kang, Naoko Takebe, Richard A. Graham, Michael L. Maitland, Richard L. Schilsky, Mark J. Ratain, and Ezra E.W. Cohen

3068 **A Multicenter Phase II Study of GanetespiB Monotherapy in Patients with Genotypically Defined Advanced Non-Small Cell Lung Cancer**

Mark A. Socinski, Jonathan Goldman, Iman El-Hariry, Marianna Koczywas, Vojo Vukovic, Leora Horn, Eugene Paschold, Ravi Salgia, Howard West, Lecia V. Sequist, Philip Bonomi, Julie Brahmer, Lin-Chi Chen, Alan Sandler, Chandra P. Belani, Timothy Webb, Harry Harper, Mark Huberman, Suresh Ramalingam, Kwok-Kin Wong, Florentina Teofilovici, Wei Guo, and Geoffrey I. Shapiro

3078 **Phase I Study of U3-1287, a Fully Human Anti-HER3 Monoclonal Antibody, in Patients with Advanced Solid Tumors**

Patricia LoRusso, Pasi A. Jänne, Moacyr Oliveira, Naiyer Rizvi, Lisa Malburg, Vicki Keedy, Lorrin Yee, Catherine Copigneaux, Thore Hettmann, Chi-Yuan Wu, Agnes Ang, Abdel-Baset Halim, Robert A. Beckman, Darrin Beaupre, and Jordan Berlin

3088 **A Dose-Ranging Study of Cabozantinib in Men with Castration-Resistant Prostate Cancer and Bone Metastases**

Richard J. Lee, Philip J. Saylor, M. Dror Michaelson, S. Michael Rothenberg, Malgorzata E. Smas, David T. Miyamoto, Carol A. Gurski, Wanling Xie, Shyamala Maheswaran, Daniel A. Haber, Jonathan G. Goldin, and Matthew R. Smith

3095 **Electrocardiographic Studies of Romidepsin Demonstrate Its Safety and Identify a Potential Role for K_{ATP} Channel**

Anne M. Noonan, Robin A. Eisch, David J. Liewehr, Tristan M. Sissung, David J. Venzon, Thomas P. Flagg, Mark C. Haigney, Seth M. Steinberg, William D. Figg, Richard L. Piekarz, and Susan E. Bates

LETTERS TO THE EDITOR

3105 **Gender, Cytidine Deaminase, and 5-Aza/Decitabine—Letter**
Joseph Ciccolini, Godefridus J. Peters, and
Elisa Giovannetti

3106 **Gender, Cytidine Deaminase, and 5-Aza/Decitabine—Response**
Reda Z. Mahfouz, Lip Seng Koh, Marissa Teo,
Chit Lai Chee, Han Chong Toh, and
Yogen Sauntharajah

CORRECTION

3108 **Correction: The Anti-CD19 Antibody–Drug Conjugate SAR3419 Prevents Hematolymphoid Relapse Postinduction Therapy in Preclinical Models of Pediatric Acute Lymphoblastic Leukemia**

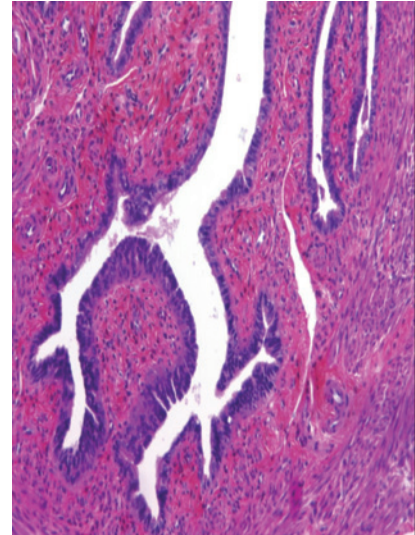
AC icon indicates Author Choice

CME icon indicates that this article is available for continuing medical education credit at <http://cme.aacrjournals.org>

For more information please visit www.aacrjournals.org

ABOUT THE COVER

The cover shows a noncancerous fallopian tube, H&E stain, magnification $\times 100$. For details, see the article by Chene and colleagues on page 2873 of this issue.



Clinical Cancer Research

19 (11)

Clin Cancer Res 2013;19:2789-3108.

Updated version Access the most recent version of this article at:
<http://clincancerres.aacrjournals.org/content/19/11>

E-mail alerts [Sign up to receive free email-alerts](#) related to this article or journal.

Reprints and Subscriptions To order reprints of this article or to subscribe to the journal, contact the AACR Publications Department at pubs@aacr.org.

Permissions To request permission to re-use all or part of this article, use this link <http://clincancerres.aacrjournals.org/content/19/11>.
Click on "Request Permissions" which will take you to the Copyright Clearance Center's (CCC) Rightslink site.