


Highlights of This Issue 3109

SPECIAL FEATURES

CCR Translations

- 3111 **Stearoyl Co-A Desaturase 1 as a ccRCC Therapeutic Target: Death by Stress**
Janet Y. Leung and William Y. Kim
See related article by von Roemeling et al., Clin Cancer Res, vol. 19(9), p. 2368–80

Molecular Pathways

- 3114 **Molecular Pathways: Extracting Medical Knowledge from High-Throughput Genomic Data**
 Theodore C. Goldstein, Evan O. Paull, Matthew J. Ellis, and Joshua M. Stuart

HUMAN CANCER BIOLOGY

- 3121 **microRNA Expression Profiles Identify Subtypes of Mantle Cell Lymphoma with Different Clinicobiological Characteristics**
Alba Navarro, Guillem Clot, Miriam Prieto, Cristina Royo, Maria Carmela Vegliante, Virginia Amador, Elena Hartmann, Itziar Salaverria, Sílvia Beà, Jose Ignacio Martín-Subero, Andreas Rosenwald, German Ott, Adrian Wiestner, Wyndham H. Wilson, Elías Campo, and Luis Hernández
- 3130 **Biological and Clinical Relevance of miRNA Expression Signatures in Primary Plasma Cell Leukemia**
Marta Lionetti, Pellegrino Musto, Maria Teresa Di Martino, Sonia Fabris, Luca Agnelli, Katia Todoerti, Giacomo Tuana, Laura Mosca, Maria E. Gallo Cantafio, Vitina Grieco, Gabriella Bianchino, Fiorella D'Auria, Teodora Statuto, Carmela Mazzoccoli, Luciana De Luca, Maria Teresa Petrucci, Massimo Offidani, Francesco Di Raimondo, Antonietta Falcone, Tommaso Caravita, Paola Omede', Fortunato Morabito, Pierfrancesco Tassone, Mario Boccardo, Antonio Palumbo, and Antonino Neri

- 3143 **Conjunctival Melanomas Harbor BRAF and NRAS Mutations and Copy Number Changes Similar to Cutaneous and Mucosal Melanomas**
Klaus G. Griewank, Henrike Westekemper, Rajmohan Murali, Monika Mach, Bastian Schilling, Thomas Wiesner, Tobias Schimming, Elisabeth Livingstone, Antje Sucker, Florian Grabellus, Claudia Metz, Daniela Süsskind, Uwe Hillen, Michael R. Speicher, Scott E. Woodman, Klaus-Peter Steuhl, and Dirk Schadendorf

CANCER THERAPY: PRECLINICAL

- 3153 **Receptor Affinity and Extracellular Domain Modifications Affect Tumor Recognition by ROR1-Specific Chimeric Antigen Receptor T Cells**
Michael Hudecek, Maria-Teresa Lupo-Stanghellini, Paula L. Kosasih, Daniel Sommermeyer, Michael C. Jensen, Christoph Rader, and Stanley R. Riddell
- 3165 **Gliomas Promote Immunosuppression through Induction of B7-H1 Expression in Tumor-Associated Macrophages**
Orin Bloch, Courtney A. Crane, Rajwant Kaur, Michael Safaei, Martin J. Rutkowski, and Andrew T. Parsa
- 3176 **IL-17-Mediated M1/M2 Macrophage Alteration Contributes to Pathogenesis of Bisphosphonate-Related Osteonecrosis of the Jaws**
Qunzhou Zhang, Ikiru Atsuta, Shiyu Liu, Chider Chen, Shihong Shi, Songtao Shi, and Anh D. Le
- 3189 **ATM Kinase Inhibition Preferentially Sensitizes p53-Mutant Glioma to Ionizing Radiation**
Laura Biddlestone-Thorpe, Muhammad Sajjad, Elizabeth Rosenberg, Jason M. Beckta, Nicholas C.K. Valerie, Mary Tokarz, Bret R. Adams, Alison F. Wagner, Ashraf Khalil, Donna Gilfor, Sarah E. Golding, Sumitra Deb, David G. Temesi, Alan Lau, Mark J. O'Connor, Kevin S. Choe, Luis F. Parada, Sang Kyun Lim, Nitai D. Mukhopadhyay, and Kristoffer Valerie

- 3201 **Frequent Inactivation of *Cysteine Dioxygenase Type 1* Contributes to Survival of Breast Cancer Cells and Resistance to Anthracyclines**
Jana Jeschke, Heather M. O'Hagan, Wei Zhang, Rajita Vataapalli, Marilia Freitas Calmon, Ludmila Danilova, Claudia Nelkenbrecher, Leander Van Neste, Ingrid T.G.W. Bijsmans, Manon Van Engeland, Edward Gabrielson, Kornel E. Schuebel, Andreas Winterpacht, Stephen B. Baylin, James G. Herman, and Nita Ahuja
- 3212 **Cap-Translation Inhibitor, 4EGI-1, Restores Sensitivity to ABT-737 Apoptosis through Cap-Dependent and -Independent Mechanisms in Chronic Lymphocytic Leukemia**
Shaun Willimott, Daniel Beck, Matthew J. Ahearne, Victoria C. Adams, and Simon D. Wagner
- 3224 **Prolonged Inhibition of Glioblastoma Xenograft Initiation and Clonogenic Growth following *In Vivo* Notch Blockade**
Qian Chu, Brent A. Orr, Samantha Semenkow, Eli E. Bar, and Charles G. Eberhart
- 3234 **Monoclonal Antibody against the Ectodomain of E-Cadherin (DECMA-1) Suppresses Breast Carcinogenesis: Involvement of the HER/PI3K/Akt/mTOR and IAP Pathways**
Sabine M. Brouxhon, Stephanos Kyrkanides, Xiaofei Teng, Veena Raja, M. Kerry O'Banion, Robert Clarke, Stephen Byers, Andrew Silberfeld, Carmen Tornos, and Li Ma
- 3259 **Adverse Outcomes in Clear Cell Renal Cell Carcinoma with Mutations of 3p21 Epigenetic Regulators *BAP1* and *SETD2*: A Report by MSKCC and the KIRC TCGA Research Network**
A. Ari Hakimi, Irina Ostrovnaya, Boris Reva, Nikolaus Schultz, Ying-Bei Chen, Mithat Gonen, Han Liu, Shugaku Takeda, Martin H. Voss, Satish K. Tickoo, Victor E. Reuter, Paul Russo, Emily H. Cheng, Chris Sander, Robert J. Motzer, and James J. Hsieh for The ccRCC Cancer Genome Atlas (KIRC TCGA) Research Network investigators
- 3268 ***EDNRB* and *DCC* Salivary Rinse Hypermethylation Has a Similar Performance as Expert Clinical Examination in Discrimination of Oral Cancer/Dysplasia versus Benign Lesions**
Juliana Schussel, Xian Chong Zhou, Zhe Zhang, Kavita Pattani, Francisco Bermudez, Germain Jean-Charles, Thomas McCaffrey, Tapan Padhya, Joan Phelan, Silvia Spivakovsky, Mariana Brait, Ryan Li, Helen Yoo Bowne, Judith D. Goldberg, Linda Rolnitzky, Miriam Robbins, A. Ross Kerr, David Sirois, and Joseph A. Califano
- 3276 **Noninvasive Detection of *HER2* Amplification with Plasma DNA Digital PCR**
Heidrun Gevensleben, Isaac Garcia-Murillas, Monika K. Graeser, Gaia Schiavon, Peter Osin, Marina Parton, Ian E. Smith, Alan Ashworth, and Nicholas C. Turner
- 3285 ***PIK3CA* and *PTEN* Gene and Exon Mutation-Specific Clinicopathologic and Molecular Associations in Colorectal Cancer**
Fiona L. Day, Robert N. Jorissen, Lara Lipton, Dmitri Mouradov, Anuratha Sakhianandeswaren, Michael Christie, Shan Li, Cary Tsui, Jeannie Tie, Jayesh Desai, Zheng-Zhou Xu, Peter Molloy, Vicki Whitehall, Barbara A. Leggett, Ian T. Jones, Stephen McLaughlin, Robyn L. Ward, Nicholas J. Hawkins, Andrew R. Ruszkiewicz, James Moore, Dana Busam, Qi Zhao, Robert L. Strausberg, Peter Gibbs, and Oliver M. Sieber

IMAGING, DIAGNOSIS, PROGNOSIS

- 3247 **Transcriptional Characterization of a Prospective Series of Primary Plasma Cell Leukemia Revealed Signatures Associated with Tumor Progression and Poorer Outcome**
Katia Todoerti, Luca Agnelli, Sonia Fabris, Marta Lionetti, Giacomo Tuana, Laura Mosca, Luigia Lombardi, Vitina Grieco, Gabriella Bianchino, Fiorella D'Auria, Teodora Statuto, Carmela Mazzoccoli, Luciana De Luca, Maria Teresa Petrucci, Fortunato Morabito, Massimo Offidani, Francesco Di Raimondo, Antonietta Falcone, Paola Omede', Pierfrancesco Tassone, Mario Boccardo, Antonio Palumbo, Antonino Neri, and Pellegrino Musto

CANCER THERAPY: CLINICAL

3297 | **Prospective Phase II Study on 5-Days Azacitidine for Treatment of Symptomatic and/or Erythropoietin Unresponsive Patients with Low/INT-1–Risk Myelodysplastic Syndromes**
Carla Fili, Michele Malagola, Matilde Y. Follo, Carlo Finelli, Ilaria Iacobucci, Giovanni Martinelli, Federica Cattina, Cristina Clissa, Anna Candoni, Renato Fanin, Marco Gobbi, Monica Bocchia, Marzia Defina, Pierangelo Spedini, Cristina Skert, Lucia Manzoli, Lucio Cocco, and Domenico Russo

3309 | **A Review of Study Designs and Outcomes of Phase I Clinical Studies of Nanoparticle Agents Compared with Small-Molecule Anticancer Agents**
Whitney P. Caron, Katherine P. Morgan, Beth A. Zamboni, and William C. Zamboni

PREDICTIVE BIOMARKERS AND PERSONALIZED MEDICINE

3316 | **CYP3A4*22 Genotype and Systemic Exposure Affect Paclitaxel-Induced Neurotoxicity**
Anne-Joy M. de Graan, Laure Elens, Jason A. Sprowl, Alex Sparreboom, Lena E. Friberg, Bronno van der Holt, Pleun J. de Raaf, Peter de Bruijn, Frederike K. Engels, Ferry A.L.M. Eskens, Erik A.C. Wiemer, Jaap Verweij, Ron H.J. Mathijssen, and Ron H.N. van Schaik

LETTERS TO THE EDITOR

3325 | **Plasma MicroRNAs in Ovarian Cancer—Letter**
Haifeng Qiu

3326 | **Plasma MicroRNAs in Ovarian Cancer—Response**
Xin Huang and Anda M. Vlad

RETRACTION

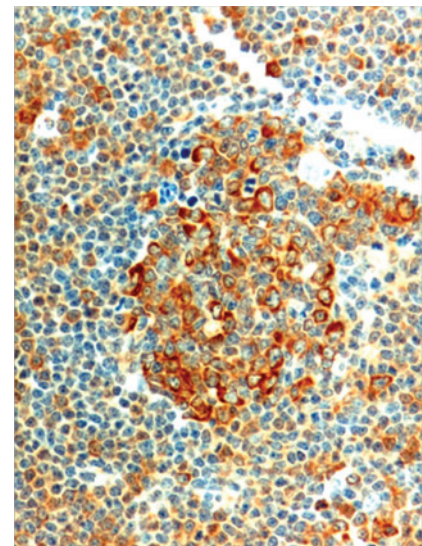
3327 | **Retraction: Functional Characterization of the Bladder Cancer Marker, BLCA-4**

CME icon indicates that this article is available for continuing medical education credit at <http://cme.aacrjournals.org>

For more information please visit www.aacrjournals.org

ABOUT THE COVER

The cover shows a section of a lymph node biopsy from a patient with chronic lymphocytic leukemia. Immunohistochemical staining shows strong phospho-eIF4E expression within a proliferation center suggesting induction of cap-complex formation and protein synthesis within this microenvironment. For details, see the article by Willimott and colleagues on page 3212 of this issue.



Clinical Cancer Research

19 (12)

Clin Cancer Res 2013;19:3109-3327.

Updated version Access the most recent version of this article at:
<http://clincancerres.aacrjournals.org/content/19/12>

E-mail alerts [Sign up to receive free email-alerts](#) related to this article or journal.

Reprints and Subscriptions To order reprints of this article or to subscribe to the journal, contact the AACR Publications Department at pubs@aacr.org.

Permissions To request permission to re-use all or part of this article, use this link <http://clincancerres.aacrjournals.org/content/19/12>. Click on "Request Permissions" which will take you to the Copyright Clearance Center's (CCC) Rightslink site.