

Highlights of This Issue 4019

SPECIAL FEATURES

CCR Translations

- 4021 **Tumor-Specific T-cell Help Is Associated with Improved Survival in Melanoma**
Katherine Woods and Jonathan Cebon
See article, p. 4228
- 4024 **Personalized Medicine: Through the Looking Glass of Functional Imaging**
Raymond J. Hohl
See article, p. 4163

CCR New Strategies

- 4027 **New Strategies for Carcinoma of Unknown Primary: The Role of Tissue-of-Origin Molecular Profiling**
Gauri Varadhachary

CCR Perspectives in Drug Approval

- 4034 **Is Conflict of Interest Becoming a Challenge for Institution-Based Institutional Review Boards?**
Ralph S. Freedman and Ross McKinney, Jr

Molecular Pathways

- 4040 **Molecular Pathways: ROS1 Fusion Proteins in Cancer**
Kurtis D. Davies and Robert C. Doebele

Reviews

- 4046 **HMGB1 in Cancer: Good, Bad, or Both?**
 Rui Kang, QiuHong Zhang, Herbert J. Zeh III, Michael T. Lotze, and Daolin Tang
- 4058 **Genomic Profiling Defines Subtypes of Prostate Cancer with the Potential for Therapeutic Stratification**
Jamie R. Schoenborn, Pete Nelson, and Min Fang

HUMAN CANCER BIOLOGY

- 4067 **microRNA 223 Is Upregulated in the Multistep Progression of Barrett's Esophagus and Modulates Sensitivity to Chemotherapy by Targeting *PARP1***
Mirte Mayke Streppel, Shweta Pai, Nathaniel R. Campbell, Chaoxin Hu, Shinichi Yabuuchi, Marcia Irene Canto, Jean S. Wang, Elizabeth A. Montgomery, and Anirban Maitra
- 4079 **Characteristics and Clinical Impacts of the Immune Environments in Colorectal and Renal Cell Carcinoma Lung Metastases: Influence of Tumor Origin**
Romain Remark, Marco Alifano, Isabelle Cremer, Audrey Lupo, Marie-Caroline Dieu-Nosjean, Marc Riquet, Lucile Crozet, Hanane Ouakrim, Jeremy Goc, Aurélie Cazes, Jean-François Fléjou, Laure Gibault, Virginie Verkarre, Jean-François Régnard, Olivier-Nicolas Pagès, Stéphane Oudard, Bernhard Mlecnik, Catherine Sautès-Fridman, Wolf-Herman Fridman, and Diane Damotte
- 4092 **IL-10 Promotes Tumor Aggressiveness via Upregulation of CIP2A Transcription in Lung Adenocarcinoma**
Wen-Wei Sung, Yao-Chen Wang, Po-Lin Lin, Ya-Wen Cheng, Chih-Yi Chen, Tzu-Chin Wu, and Huei Lee
- 4104 **Somatic Profiling of the Epidermal Growth Factor Receptor Pathway in Tumors from Patients with Advanced Colorectal Cancer Treated with Chemotherapy ± Cetuximab**
Christopher G. Smith, David Fisher, Bart Claes, Timothy S. Maughan, Shelley Idziaszczyk, Gilian Peuteman, Rebecca Harris, Michelle D. James, Angela Meade, Bharat Jasani, Richard A. Adams, Sarah Kenny, Richard Kaplan, Diether Lambrechts, and Jeremy P. Cheadle

4114

miRNA Landscape in Stage I Epithelial Ovarian Cancer Defines the Histotype Specificities

Enrica Calura, Robert Fruscio, Lara Paracchini, Eliana Bignotti, Antonella Ravaggi, Paolo Martini, Gabriele Sales, Luca Beltrame, Luca Clivio, Lorenzo Ceppi, Mariacristina Di Marino, Ilaria Fuso Nerini, Laura Zanotti, Duccio Cavalieri, Giorgio Cattoretti, Patrizia Perego, Rodolfo Milani, Dionyssios Katsaros, Germana Tognon, Enrico Sartori, Sergio Pecorelli, Costantino Mangioni, Maurizio D'Incalci, Chiara Romualdi, and Sergio Marchini

CANCER THERAPY: PRECLINICAL

4124



Anticancer Effects of Niclosamide in Human Glioblastoma

Anja Wieland, Daniel Trageser, Sabine Gogolok, Roman Reinartz, Heike Höfer, Mihaela Keller, Anke Leinhaas, Ramona Schelle, Sabine Normann, Lil Klaas, Andreas Waha, Philipp Koch, Rolf Fimmers, Torsten Pietsch, Anthony T. Yachnis, David W. Pincus, Dennis A. Steindler, Oliver Brüstle, Matthias Simon, Martin Glas, and Björn Scheffler

4137

Combined Alloreactive CTL Cellular Therapy with Prodrug Activator Gene Therapy in a Model of Breast Cancer Metastatic to the Brain

Michelle J. Hickey, Colin C. Malone, Kate L. Erickson, Amy Lin, Horacio Soto, Edward T. Ha, Shuichi Kamijima, Akihito Inagaki, Masamichi Takahashi, Yuki Kato, Noriyuki Kasahara, Barbara M. Mueller, and Carol A. Kruse

4149

Rational Combination of a MEK Inhibitor, Selumetinib, and the Wnt/Calcium Pathway Modulator, Cyclosporin A, in Preclinical Models of Colorectal Cancer

Anna Spreafico, John J. Tentler, Todd M. Pitts, Aik Choon Tan, Mark A. Gregory, John J. Arcaroli, Peter J. Klauck, Martine C. McManus, Ryan J. Hansen, Jihye Kim, Lindsey N. Micel, Heather M. Selby, Timothy P. Newton, Kelly L. McPhillips, Daniel L. Gustafson, James V. DeGregori, Wells A. Messersmith, Robert A. Winn, and S. Gail Eckhardt

IMAGING, DIAGNOSIS, PROGNOSIS

4163

Toward Prediction of Efficacy of Chemotherapy: A Proof of Concept Study in Lung Cancer Patients Using [¹¹C]docetaxel and Positron Emission Tomography

Astrid A.M. van der Veldt, Mark Lubberink, Ron H.J. Mathijssen, Walter J. Loos, Gerarda J.M. Herder, Henri N. Greuter, Emile F.I. Comans, Hugo B. Rutten, Jonas Eriksson, Albert D. Windhorst, N. Harry Hendrikse, Pieter E. Postmus, Egbert F. Smit, and Adriaan A. Lammertsma
See commentary, p. 4024

4174

A Poor Prognosis Subtype of HNSCC Is Consistently Observed across Methylome, Transcriptome, and miRNome Analysis

Alain C. Jung, Sylvie Job, Sonia Ledrappier, Christine Macabre, Joseph Abecassis, Aurélien de Reyniès, and Bohdan Wasyluk

4185

A Functional Variant at 19q13.3, rs967591G>A, Is Associated with Shorter Survival of Early-Stage Lung Cancer

Hyo-Sung Jeon, Guang Jin, Hyo-Gyoung Kang, Yi Young Choi, Won Kee Lee, Jin Eun Choi, Eun Young Bae, Seung Soo Yoo, Shin Yup Lee, Eung Bae Lee, Young Tae Kim, Jaehee Lee, Seung-Ick Cha, Chang Ho Kim, Sanghoon Jheon, In San Kim, and Jae Yong Park

4196

Breast Cancer Index Identifies Early-Stage Estrogen Receptor-Positive Breast Cancer Patients at Risk for Early- and Late-Distant Recurrence

Yi Zhang, Catherine A. Schnabel, Brock E. Schroeder, Piiha-Lotta Jerevall, Rachel C. Jankowitz, Tommy Fornander, Olle Stål, Adam M. Brufsky, Dennis Sgroi, and Mark G. Erlander

4206

Tumor Imaging and Interferon- γ -Inducible Protein-10 Gene Transfer Using a Highly Efficient Transferrin-Conjugated Liposome System in Mice

Huiqin Zhuo, Yi Peng, Qin Yao, Nuo Zhou, Sufang Zhou, Jian He, Yuan Fang, Xi Li, Hongwei Jin, Xiaoling Lu, and Yongxiang Zhao

4218

Serum Insulin-like Growth Factor-I Level Is an Independent Predictor of Recurrence and Survival in Early Hepatocellular Carcinoma: A Prospective Cohort Study

Eun Ju Cho, Jeong-Hoon Lee, Jeong-Ju Yoo, Won-Mook Choi, Min Jong Lee, Yuri Cho, Dong Hyeon Lee, Yun Bin Lee, Jung Hee Kwon, Su Jong Yu, Jeong Min Lee, Kyung-Suk Suh, Kion Kim, Yoon Jun Kim, Jung-Hwan Yoon, Chung Yong Kim, and Hyo-Suk Lee

CANCER THERAPY: CLINICAL

- 4228 **A Randomized Phase II Trial of Multi-peptide Vaccination with Melanoma Peptides for Cytotoxic T Cells and Helper T Cells for Patients with Metastatic Melanoma (E1602)**
Craig L. Slingluff, Jr, Sandra Lee, Fengmin Zhao, Kimberly A. Chianese-Bullock, Walter C. Olson, Lisa H. Butterfield, Theresa L. Whiteside, Philip D. Leming, and John M. Kirkwood
See commentary, p. 4021
- 4239 **Vandetanib in Children and Adolescents with Multiple Endocrine Neoplasia Type 2B Associated Medullary Thyroid Carcinoma**
Elizabeth Fox, Brigitte C. Widemann, Meredith K. Chuk, Leigh Marcus, Alberta Aikin, Patricia O. Whitcomb, Maria J. Merino, Maya Lodish, Eva Dombi, Seth M. Steinberg, Samuel A. Wells, and Frank M. Balis
- 4249 **Cyclophosphamide Induces a IFN- γ -Associated Sterile Inflammatory Response Signature in Cancer Patients' Blood Cells: Implications for Cancer Chemoimmunotherapy**
Federica Moschella, Giovanni Fernando Torelli, Mara Valentini, Francesca Urbani, Carla Buccione, Maria Teresa Petrucci, Fiammetta Natalino, Filippo Belardelli, Robin Foà, and Enrico Proietti
- 4262 **A Phase I Study of Quisinostat (JNJ-26481585), an Oral Hydroxamate Histone Deacetylase Inhibitor with Evidence of Target Modulation and Antitumor Activity, in Patients with Advanced Solid Tumors**
Balaji Venugopal, Richard Baird, Rebecca S. Kristeleit, Ruth Plummer, Richard Cowan, Adam Stewart, Nele Fourneau, Peter Hellemans, Yusri Elsayed, Steve Mcclue, Johan W. Smit, Ann Forslund, Charles Phelps, John Camm, TR Jeffrey Evans, Johann S. de Bono, and Udai Banerji

PREDICTIVE BIOMARKERS AND PERSONALIZED MEDICINE

- 4273 ***ALK* Rearrangements Are Mutually Exclusive with Mutations in *EGFR* or *KRAS*: An Analysis of 1,683 Patients with Non-Small Cell Lung Cancer**
Justin F. Gainor, Anna M. Varghese, Sai-Hong Ignatius Ou, Sheheryar Kabraji, Mark M. Awad, Ryohei Katayama, Amanda Pawlak, Mari Mino-Kenudson, Beow Y. Yeap, Gregory J. Riely, A. John Iafrate, Maria E. Arcila, Marc Ladanyi, Jeffrey A. Engelman, Dora Dias-Santagata, and Alice T. Shaw
- 4282 **Putative Predictive Biomarkers of Survival in Patients with Metastatic Pancreatic Adenocarcinoma Treated with Gemcitabine and Ganitumab, an IGF1R Inhibitor**
Ian McCaffery, Yanyan Tudor, Hongjie Deng, Rui Tang, Samuel Suzuki, Sunita Badola, Hedy L. Kindler, Charles S. Fuchs, Elwyn Loh, Scott D. Patterson, Li Chen, and Jennifer L. Gansert

LETTERS TO THE EDITOR

- 4290 **Tivantinib (ARQ197) Displays Cytotoxic Activity That Is Independent of Its Ability to Bind MET—Letter**
Lorenza Rimassa, Jordi Bruix, Massimo Broggin, and Armando Santoro
- 4291 **Tivantinib (ARQ197) Displays Cytotoxic Activity That Is Independent of Its Ability to Bind MET—Response**
Paolo Michieli, Cristina Basilico, and Selma Pennacchietti

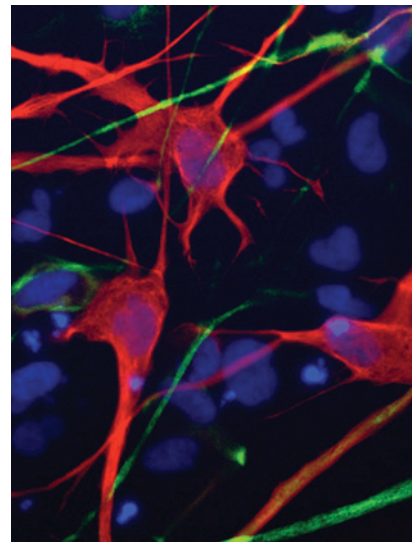
AC icon indicates Author Choice

CME icon indicates that this article is available for continuing medical education credit at <http://cme.aacrjournals.org>

For more information please visit www.aacrjournals.org

ABOUT THE COVER

Primary human glioblastoma cells reveal neuronal (green) and glial (red) differentiation potential. The image was obtained during multipotency and self-renewal analysis investigating antitumor effects of niclosamide. For details, see the article by Wieland and colleagues on page 4124 of this issue.



Clinical Cancer Research

19 (15)

Clin Cancer Res 2013;19:4019-4291.

Updated version Access the most recent version of this article at:
<http://clincancerres.aacrjournals.org/content/19/15>

E-mail alerts [Sign up to receive free email-alerts](#) related to this article or journal.

Reprints and Subscriptions To order reprints of this article or to subscribe to the journal, contact the AACR Publications Department at pubs@aacr.org.

Permissions To request permission to re-use all or part of this article, use this link <http://clincancerres.aacrjournals.org/content/19/15>.
Click on "Request Permissions" which will take you to the Copyright Clearance Center's (CCC) Rightslink site.