

## Highlights of This Issue 4903

### SPECIAL FEATURES

#### CCR Translations

- 4905 **Can Stroma Reaction Predict Cancer Lethality?**  
Michael R. Freeman, Quanlin Li, and Leland W.K. Chung  
*See related article, p. 5127*
- 4908 **What's in a Label? Radioimmunotherapy for Metastatic Prostate Cancer**  
Charles B. Simone II and Stephen M. Hahn  
*See related article, p. 5182*

#### CCR Perspectives in Drug Approval

- 4911 **First FDA Approval of Dual Anti-HER2 Regimen: Pertuzumab in Combination with Trastuzumab and Docetaxel for HER2-Positive Metastatic Breast Cancer**  
Gideon M. Blumenthal, Nancy S. Scher, Patricia Cortazar, Somesh Chattopadhyay, Shenghui Tang, Pengfei Song, Qi Liu, Kimberly Ringgold, Anne M. Pilaro, Amy Tilley, Kathryn E. King, Laurie Graham, Barbara L. Rellahan, Wendy C. Weinberg, Bo Chi, Colleen Thomas, Patricia Hughes, Amna Ibrahim, Robert Justice, and Richard Pazdur


#### Molecular Pathways

- 4917 **Molecular Pathways: Coexpression of Immune Checkpoint Molecules: Signaling Pathways and Implications for Cancer Immunotherapy**  
 Christopher J. Nirschl and Charles G. Drake
- 4925 **Molecular Pathways: YAP and TAZ Take Center Stage in Organ Growth and Tumorigenesis**  
Stefano Piccolo, Michelangelo Cordenonsi, and Sirio Dupont

#### Review

- 4931 **Phase III Trials of Targeted Anticancer Therapies: Redesigning the Concept**  
Alberto Ocana, Eitan Amir, Francisco Vera-Badillo, Bostjan Seruga, and Ian F. Tannock

## HUMAN CANCER BIOLOGY

- 4941 **Gene Expression Profiling using Nanostring Digital RNA Counting to Identify Potential Target Antigens for Melanoma Immunotherapy**  
Rachel E. Beard, Daniel Abate-Daga, Shannon F. Rosati, Zhili Zheng, John R. Wunderlich, Steven A. Rosenberg, and Richard A. Morgan
- 4951 **Tumor-Infiltrating Lymphocytes in Glioblastoma Are Associated with Specific Genomic Alterations and Related to Transcriptional Class**  
W. Caleb Rutledge, Jun Kong, Jingjing Gao, David A. Gutman, Lee A.D. Cooper, Christina Appin, Yuna Park, Lisa Scarpace, Tom Mikkelsen, Mark L. Cohen, Kenneth D. Aldape, Roger E. McLendon, Norman L. Lehman, C. Ryan Miller, Matthew J. Schniederjan, Cameron W. Brennan, Joel H. Saltz, Carlos S. Moreno, and Daniel J. Brat
- 4961 **Protein Kinase C- $\delta$ -Mediated Recycling of Active KIT in Colon Cancer**  
 Misun Park, Won Kyu Kim, Meiyong Song, Minhee Park, Hyunki Kim, Hye Jin Nam, Sung Hee Baek, and Hogueun Kim
- 4972 **Relationship of Mammographic Density and Gene Expression: Analysis of Normal Breast Tissue Surrounding Breast Cancer**  
Xuezheng Sun, Gretchen L. Gierach, Rupninder Sandhu, Tyisha Williams, Bentley R. Midkiff, Jolanta Lissowska, Ewa Wesolowska, Norman F. Boyd, Nicole B. Johnson, Jonine D. Figueroa, Mark E. Sherman, and Melissa A. Troester
- 4983 **Integration of Metabolomics and Transcriptomics Revealed a Fatty Acid Network Exerting Growth Inhibitory Effects in Human Pancreatic Cancer**  
Geng Zhang, Peijun He, Hanson Tan, Anuradha Budhu, Jochen Gaedcke, B. Michael Ghadimi, Thomas Ried, Harris G. Yfantis, Dong H. Lee, Anirban Maitra, Nader Hanna, H. Richard Alexander, and S. Perwez Hussain

4994 **Estrogen Receptor  $\alpha$  Regulates ATM Expression through miRNAs in Breast Cancer**  
Xiaojing Guo, Chunying Yang, Xiaolong Qian, Ting Lei, Yaqing Li, Haifa Shen, Li Fu, and Bo Xu

5079 **Generation of Tumor Antigen-Specific T Cell Lines from Pediatric Patients with Acute Lymphoblastic Leukemia—Implications for Immunotherapy**  
Gerrit Weber, Ignazio Caruana, Rayne H. Rouce, A. John Barrett, Ulrike Gerdemann, Ann M. Leen, Karen R. Rabin, and Catherine M. Bollard

## CANCER THERAPY: PRECLINICAL

5003 **BMN 673, a Novel and Highly Potent PARP1/2 Inhibitor for the Treatment of Human Cancers with DNA Repair Deficiency**  
Yuqiao Shen, Farah L. Rehman, Ying Feng, Julia Boshuizen, Ilirjana Bajrami, Richard Elliott, Bing Wang, Christopher J. Lord, Leonard E. Post, and Alan Ashworth

5092 **Dual Targeting of Wild-Type and Mutant p53 by Small Molecule RITA Results in the Inhibition of N-Myc and Key Survival Oncogenes and Kills Neuroblastoma Cells *In Vivo* and *In Vitro***  
Mikhail Burmakin, Yao Shi, Elisabeth Hedström, Per Kogner, and Galina Selivanova

5016 **A Purine Scaffold HSP90 Inhibitor BIIB021 Has Selective Activity against KSHV-Associated Primary Effusion Lymphoma and Blocks vFLIP K13-Induced NF- $\kappa$ B**  
Ramakrishnan Gopalakrishnan, Hittu Matta, and Preet M. Chaudhary

5104 **Perioperative Influenza Vaccination Reduces Postoperative Metastatic Disease by Reversing Surgery-Induced Dysfunction in Natural Killer Cells**  
Lee-Hwa Tai, Jiqing Zhang, Karen J. Scott, Christiano Tanese de Souza, Almohanad A. Alkayyal, Anu Abhirami Ananth, Shalini Sahi, Robert A. Adair, Ahmad B. Mahmoud, Subash Sad, John C. Bell, Andrew P. Makrigrannis, Alan A. Melcher, and Rebecca C. Auer

5027 **Ligand-Dependent Activation of EGFR in Follicular Dendritic Cells Sarcoma is Sustained by Local Production of Cognate Ligands**  
William Vermi, Emanuele Giuriso, Silvia Lonardi, Piera Balzarini, Elisa Rossi, Daniela Medicina, Daniela Bosisio, Silvano Sozzani, Wilma Pellegrini, Claudio Dogliani, Antonio Marchetti, Giulio Rossi, Stefano Pileri, and Fabio Facchetti

## IMAGING, DIAGNOSIS, PROGNOSIS

5039 **Downregulation of Hematopoietic MUC1 during Experimental Colitis Increases Tumor-Promoting Myeloid-Derived Suppressor Cells**  
Tze Wei Poh, Cathy S. Madsen, Jessica E. Gorman, Ronald J. Marler, Jonathan A. Leighton, Peter A. Cohen, and Sandra J. Gendler

5116 **Identification of Transcriptional Subgroups in EGFR-Mutated and EGFR/KRAS Wild-Type Lung Adenocarcinoma Reveals Gene Signatures Associated with Patient Outcome**  
Maria Planck, Sofi Isaksson, Srinivas Veerla, and Johan Staaf

5053 **Network Analysis Identifies an HSP90-Central Hub Susceptible in Ovarian Cancer**  
Hanqing Liu, Fang Xiao, Ilya G. Serebriiskii, Shane W. O'Brien, Marisa A. Maglaty, Igor Astsaturov, Samuel Litwin, Lainie P. Martin, David A. Proia, Erica A. Golemis, and Denise C. Connolly

5127 **Stromal Responses among Common Carcinomas Correlated with Clinicopathologic Features**  
Julia L-Y. Chen, Iñigo Espinosa, Albert Y. Lin, Olivia Y-W. Liao, Matt van de Rijn, and Robert B. West  
*See related article, p. 4905*

5068 **Onartuzumab (MetMab): Using Nonclinical Pharmacokinetic and Concentration-Effect Data to Support Clinical Development**  
Hong Xiang, Brendan C. Bender, Arthur E. Reyes II, Mark Merchant, Nelson L. 'Shasha' Jumbe, Mally Romero, Teresa Davancaze, Ihsan Nijem, Elaine Mai, Judy Young, Amy Peterson, and Lisa A. Damico-Beyer

5136 **Isocitrate Dehydrogenase 1 Is a Novel Plasma Biomarker for the Diagnosis of Non-Small Cell Lung Cancer**  
Nan Sun, Zhaoli Chen, Fengwei Tan, Baihua Zhang, Ran Yao, Chengcheng Zhou, Jiagen Li, Yibo Gao, Ziyuan Liu, Xiaogang Tan, Fang Zhou, Max Y.F He, Kang Shao, Ning Li, Bin Qiu, Jian Sun, Yue Yu, Suyu Wang, Yuda Zhao, Xuejiao Shi, and Jie He

- 5146 **Long-Term Survival in Primary Glioblastoma With Versus Without Isocitrate Dehydrogenase Mutations**  
Christian Hartmann, Bettina Hentschel, Matthias Simon, Manfred Westphal, Gabriele Schackert, Jörg C. Tonn, Markus Loeffler, Guido Reifenberger, Torsten Pietsch, Andreas von Deimling, and Michael Weller, for the German Glioma Network
- 5158 **Relationships between LDH-A, Lactate, and Metastases in 4T1 Breast Tumors**  
Asif Rizwan, Inna Serganova, Raya Khanin, Hazem Karabeber, Xiaohui Ni, Sunitha Thakur, Kristen L. Zakian, Ronald Blasberg, and Jason A. Koutcher
- 5170 **DNA Methylation of the *SLC16A3* Promoter Regulates Expression of the Human Lactate Transporter MCT4 in Renal Cancer with Consequences for Clinical Outcome**  
Pascale Fisel, Stephan Kruck, Stefan Winter, Jens Bedke, Jörg Hennenlotter, Anne T. Nies, Marcus Scharpf, Falko Fend, Arnulf Stenzl, Matthias Schwab, and Elke Schaeffeler

## CANCER THERAPY: CLINICAL

- 5182 **Phase II Study of Lutetium-177–Labeled Anti-Prostate-Specific Membrane Antigen Monoclonal Antibody J591 for Metastatic Castration-Resistant Prostate Cancer**  
Scott T. Tagawa, Matthew I. Milowsky, Michael Morris, Shankar Vallabhajosula, Paul Christos, Naveed H. Akhtar, Joseph Osborne, Stanley J. Goldsmith, Steve Larson, Neeta Pandit Taskar, Howard I. Scher, Neil H. Bander, and David M. Nanus  
*See related article, p. 4908*
- 5192 **Dacarbazine in Solitary Fibrous Tumor: A Case Series Analysis and Preclinical Evidence vis-à-vis Temozolomide and Antiangiogenics**  
S. Stacchiotti, M. Tortoreto, F. Bozzi, E. Tamborini, C. Morosi, A. Messina, M. Libertini, E. Palassini, D. Cominetti, T. Negri, A. Gronchi, S. Pilotti, N. Zaffaroni, and P.G. Casali

## PREDICTIVE BIOMARKERS AND PERSONALIZED MEDICINE

- 5202 ***TMPRSS2-ERG* Status Is Not Prognostic Following Prostate Cancer Radiotherapy: Implications for Fusion Status and DSB Repair**  
Alan Dal Pra, Emilie Lalonde, Jenna Sykes, Fiona Warde, Adrian Ishkanian, Alice Meng, Chad Maloff, John Srigley, Anthony M. Joshua, Gyorgy Petrovics, Theodorus van der Kwast, Andrew Evans, Michael Milosevic, Fred Saad, Colin Collins, Jeremy Squire, Wan Lam, Tarek A. Bismar, Paul C. Boutros, and Robert G. Bristow
- 5210 **A Pharmacogenetic Predictive Model for Paclitaxel Clearance Based on the DMET Platform**  
Anne-Joy M. de Graan, Laure Elens, Marcel Smid, John W. Martens, Alex Sparreboom, Annemieke J.M. Nieuweboer, Lena E. Friberg, Samira Elbouazzaoui, Erik A.C. Wiemer, Bronno van der Holt, Jaap Verweij, Ron H.N. van Schaik, and Ron H.J. Mathijssen
- 5218 **The Role of Aberrant VHL/HIF Pathway Elements in Predicting Clinical Outcome to Pazopanib Therapy in Patients with Metastatic Clear-Cell Renal Cell Carcinoma**  
Toni K. Choueiri, André P. Fay, Robert Gagnon, Ying Lin, Brittany Bahamon, Victoria Brown, Jonathan E. Rosenberg, Thomas E. Hutson, Katherine L. Baker-Neblett, Christopher Carpenter, Yuan Liu, Lini Pandite, and Sabina Signoretti
- 5227 **Predicting Response to Bevacizumab in Ovarian Cancer: A Panel of Potential Biomarkers Informing Treatment Selection**  
Fiona Collinson, Michelle Hutchinson, Rachel A. Craven, David A. Cairns, Alexandre Zougman, Tobias C. Wind, Narinder Gahir, Michael P. Messenger, Sharon Jackson, Douglas Thompson, Cybil Adusei, Jonathan A. Ledermann, Geoffrey Hall, Gordon C. Jayson, Peter J. Selby, and Rosamonde E. Banks
- 5240 ***Bim* Polymorphisms: Influence on Function and Response to Treatment in Children with Acute Lymphoblastic Leukemia**  
Vincent Gagné, Julie Rousseau, Malgorzata Labuda, Bahram Sharif-Askari, Ivan Brukner, Caroline Laverdière, Francesco Ceppi, Stephen E. Sallan, Lewis B. Silverman, Donna Neuberg, Jeffery L. Kutok, Daniel Sinnott, and Maja Krajcinovic

---

## LETTERS TO THE EDITOR

- 5250 **Serum miR-1290 as a Marker of Pancreatic Cancer—Letter**  
Adam E. Frampton, Jonathan Krell, Geert Kazemier, and Elisa Giovannetti
- 5252 **Serum miR-1290 as a Marker of Pancreatic Cancer—Response**  
Ang Li, Jun Yu, Haeryoung Kim, Christopher L. Wolfgang, Marcia Irene Canto, Ralph H. Hruban, and Michael Goggins
- 5254 **Early Telomere Shortening and Genomic Instability in Tubo-Ovarian Preneoplastic Lesions—Letter**  
Haifeng Qiu

5255

### **Early Telomere Shortening and Genomic Instability in Tubo-Ovarian Preneoplastic Lesions—Response**

Gautier Chene, Andrei Tchirkov, and Frederique Penault-Llorca

## RETRACTION

5256

### **Retraction: Critical Role of Notch Signaling in Osteosarcoma Invasion and Metastasis**

AC icon indicates Author Choice

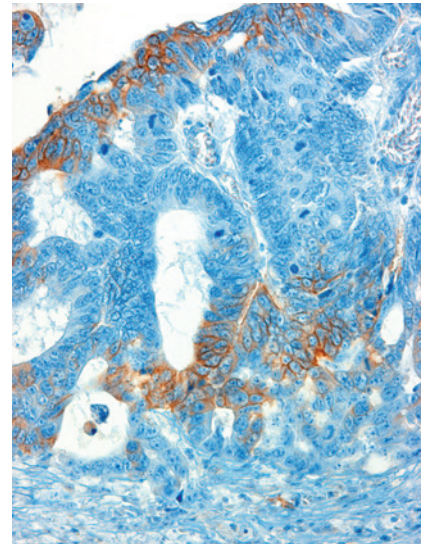
CME icon indicates that this article is available for continuing medical education credit at <http://cme.aacrjournals.org>

For more information please visit [www.aacrjournals.org](http://www.aacrjournals.org)

---

## ABOUT THE COVER

This image shows a section of a colon from a patient with colon cancer. Immunohistochemical staining shows membranous KIT expression in some of the tumor cells. For details, see the article by Park and colleagues on page 4961 of this issue.



# Clinical Cancer Research

**19 (18)**

*Clin Cancer Res* 2013;19:4903-5257.

**Updated version** Access the most recent version of this article at:  
<http://clincancerres.aacrjournals.org/content/19/18>

**E-mail alerts** [Sign up to receive free email-alerts](#) related to this article or journal.

**Reprints and Subscriptions** To order reprints of this article or to subscribe to the journal, contact the AACR Publications Department at [pubs@aacr.org](mailto:pubs@aacr.org).

**Permissions** To request permission to re-use all or part of this article, use this link <http://clincancerres.aacrjournals.org/content/19/18>.  
Click on "Request Permissions" which will take you to the Copyright Clearance Center's (CCC) Rightslink site.