

Highlights of This Issue 1

SPECIAL FEATURES

CCR Translations

- 3** CD137 as a Biomarker for Tumor-Reactive T Cells: Finding Gold in the Desert
Yuwen Zhu and Lieping Chen
See related article, p. 44
- 6** Targeting Metabolic Scavenging in Pancreatic Cancer
Costas A. Lyssiotis and Lewis C. Cantley
See related article, p. 120

CCR Perspectives in Drug Approval

- 9** Radium Ra 223 Dichloride Injection: U.S. Food and Drug Administration Drug Approval Summary
Paul G. Kluetz, William Pierce, V. Ellen Maher, Hui Zhang, Shenghui Tang, Pengfei Song, Qi Liu, Martin T. Haber, Eldon E. Leutzinger, Ali Al-Hakim, Wei Chen, Todd Palmby, Elleni Alebachew, Rajeshwari Sridhara, Amna Ibrahim, Robert Justice, and Richard Pazdur


CCR Drug Updates

- 15** Trastuzumab Emtansine: A Novel Antibody–Drug Conjugate for HER2-Positive Breast Cancer
Ian Krop and Eric P. Winer


Molecular Pathways

- 21** Molecular Pathways: SWI/SNF (BAF) Complexes Are Frequently Mutated in Cancer—Mechanisms and Potential Therapeutic Insights
Xiaofeng Wang, Jeffrey R. Haswell, and Charles W.M. Roberts
- 28** Molecular Pathways: Sterols and Receptor Signaling in Cancer
Linara Gabitova, Andrey Gorin, and Igor Astsaturov

Review

- 35** Noncoding RNAs in Prostate Cancer: The Long and the Short of It
 Eva M. Bolton, Alexandra V. Tuzova, Anna L. Walsh, Thomas Lynch, and Antoinette S. Perry


HUMAN CANCER BIOLOGY

- 44** CD137 Accurately Identifies and Enriches for Naturally Occurring Tumor-Reactive T Cells in Tumor
Qunrui Ye, De-Gang Song, Mathilde Poussin, Tori Yamamoto, Andrew Best, Chunsheng Li, George Coukos, and Daniel J. Powell Jr.
See related article, p. 3
- 56** α B-Crystallin: A Novel Regulator of Breast Cancer Metastasis to the Brain
Dmitry Malin, Elena Strekalova, Vladimir Petrovic, Allison M. Deal, Abraham Al Ahmad, Barbara Adamo, C. Ryan Miller, Andrey Ugolkov, Chad Livasy, Karen Fritch, Erika Hamilton, Kimberly Blackwell, Joseph Geradts, Matt Ewend, Lisa Carey, Eric V. Shusta, Carey K. Anders, and Vincent L. Cryns
- 68**  A High Frequency of Activating Extracellular Domain *ERBB2* (*HER2*) Mutation in Micropapillary Urothelial Carcinoma
Jeffrey S. Ross, Kai Wang, Laurie M. Gay, Rami N. Al-Rohil, Tipu Nazeer, Christine E. Sheehan, Timothy A. Jennings, Geoff A. Otto, Amy Donahue, Jie He, Gary Palmer, Siraj Ali, Michelle Nahas, Geneva Young, Elaine LaBrecque, Garrett Frampton, Rachel Erlich, John A. Curran, Kristina Brennan, Sean R. Downing, Roman Yelensky, Doron Lipson, Matthew Hawryluk, Vincent A. Miller, and Philip J. Stephens
- 76** HDM2 Regulation by AURKA Promotes Cell Survival in Gastric Cancer
Vikas Sehdev, Ahmed Katsha, Janet Arras, Dunfa Peng, Mohammed Soutto, Jeffrey Ecsedy, Alexander Zaika, Abbes Belkhiri, and Wael El-Rifai
- 87** Discrete Molecular Classes of Ovarian Cancer Suggestive of Unique Mechanisms of Transformation and Metastases
Nilesh L. Gardi, Tejaswini U. Deshpande, Swapnil C. Kamble, Sagar R. Budhe, and Sharmila A. Bapat
- 100** Genes Upregulated in Prostate Cancer Reactive Stroma Promote Prostate Cancer Progression *In Vivo*
Olga Dakhova, David Rowley, and Michael Ittmann

CANCER THERAPY: PRECLINICAL

- 110** The ATP-Competitive mTOR Inhibitor INK128 Enhances *In Vitro* and *In Vivo* Radiosensitivity of Pancreatic Carcinoma Cells
Thomas J. Hayman, Amy Wahba, Barbara H. Rath, Heekyong Bae, Tamalee Kramp, Uma T. Shankavaram, Kevin Camphausen, and Philip J. Tofilon

Table of Contents

- 120** Targeting of NAD Metabolism in Pancreatic Cancer Cells: Potential Novel Therapy for Pancreatic Tumors
 Claudia C.S. Chini, Anatilde M. Gonzalez Guerrico, Veronica Nin, Juliana Camacho-Pereira, Carlos Escande, Maria Thereza Barbosa, and Eduardo N. Chini
See related article, p. 6
- 131** Interleukin-7 Mediates Selective Expansion of Tumor-redirected Cytotoxic T Lymphocytes (CTLs) without Enhancement of Regulatory T-cell Inhibition
Serena K. Perna, Daria Pagliara, Aruna Mahendravada, Hao Liu, Malcolm K. Brenner, Barbara Savoldo, and Gianpietro Dotti
- 140** Transient Activation of Hedgehog Pathway Rescued Irradiation-Induced Hyposalivation by Preserving Salivary Stem/Progenitor Cells and Parasympathetic Innervation
Bo Hai, Lizheng Qin, Zhenhua Yang, Qingguo Zhao, Lei Shangguan, Xinyu Ti, Yanqiu Zhao, Sangroh Kim, Dharanipathy Rangaraj, and Fei Liu
- 151** Gambogic Acid Induces Apoptosis in Imatinib-Resistant Chronic Myeloid Leukemia Cells via Inducing Proteasome Inhibition and Caspase-Dependent Bcr-Abl Downregulation
 Xianping Shi, Xin Chen, Xiaofen Li, Xiaoying Lan, Chong Zhao, Shouting Liu, Hongbiao Huang, Ningning Liu, Siyan Liao, Wenbin Song, Ping Zhou, Shunqing Wang, Li Xu, Xuejun Wang, Q. Ping Dou, and Jinbao Liu
- 164** AXL Is a Key Regulator of Inherent and Chemotherapy-Induced Invasion and Predicts a Poor Clinical Outcome in Early-Stage Colon Cancer
Philip D. Dunne, Darragh G. McArt, Jaine K. Blayney, Murugan Kalimutho, Samantha Greer, Tingting Wang, Supriya Srivastava, Chee Wee Ong, Ken Arthur, Maurice Loughrey, Keara Redmond, Daniel B. Longley, Manuel Salto-Tellez, Patrick G. Johnston, and Sandra Van Schaejbroeck
- 176** Erlotinib, Gefitinib, and Vandetanib Inhibit Human Nucleoside Transporters and Protect Cancer Cells from Gemcitabine Cytotoxicity
Vijaya L. Damaraju, Tara Sriver, Delores Mowles, Michelle Kuzma, Anderson J. Ryan, Carol E. Cass, and Michael B. Sawyer
- 187** Neutrophils Promote the Malignant Glioma Phenotype through S100A4
Ji Liang, Yuji Piao, Lindsay Holmes, Gregory N. Fuller, Verlene Henry, Ningyi Tiao, and John F. de Groot

- 199** Direct Inhibition of Retinoblastoma Phosphorylation by Nimbolide Causes Cell-Cycle Arrest and Suppresses Glioblastoma Growth
Swagata Karkare, Rishi Raj Chhipa, Jane Anderson, Xiaona Liu, Heather Henry, Anjelika Gasilina, Nicholas Nassar, Jayeeta Roychoudhury, Jason P Clark, Ashish Kumar, Giovanni M. Pauletti, Pradip K. Ghosh, and Biplab Dasgupta

CANCER THERAPY: CLINICAL



- 213** A Dose-Escalation Study of SAR3419, an Anti-CD19 Antibody Maytansinoid Conjugate, Administered by Intravenous Infusion Once Weekly in Patients with Relapsed/Refractory B-cell Non-Hodgkin Lymphoma
Vincent Ribrag, Jehan Dupuis, Herve Tilly, Franck Morschhauser, Fabrice Laine, Roch Houot, Corinne Haioun, Christiane Copie, Andrea Varga, John Lambert, Laurence Hatteville, Samira Ziti-Ljajic, Anne Caron, Sandrine Payrard, and Bertrand Coiffier
- 221** Long-lasting Disease Stabilization in the Absence of Toxicity in Metastatic Lung Cancer Patients Vaccinated with an Epitope Derived from Indoleamine 2,3 Dioxygenase
Trine Zeeberg Iversen, Lotte Engell-Noerregaard, Eva Ellebaek, Rikke Andersen, Stine Kiaer Larsen, Jon Bjoern, Claus Zeyher, Cécile Gouttefangeas, Birthe Moerk Thomsen, Bente Holm, Per thor Straten, Anders Mellemegaard, Mads Hald Andersen, and Inge Marie Svane
- 233** Phase I Safety, Pharmacokinetic, and Pharmacodynamic Study of SAR245408 (XL147), an Oral Pan-Class I PI3K Inhibitor, in Patients with Advanced Solid Tumors
 Geoffrey I. Shapiro, Jordi Rodon, Cynthia Bedell, Eunice L. Kwak, Jose Baselga, Irene Braña, Shuchi S. Pandya, Christian Scheffold, A. Douglas Laird, Linh T. Nguyen, Yi Xu, Coumaran Egile, and Gerald Edelman
- 246** Tumor Growth Rate Is an Early Indicator of Antitumor Drug Activity in Phase I Clinical Trials
 Charles Ferte, Marianna Fernandez, Antoine Hollebecque, Serge Koscielny, Antonin Levy, Christophe Massard, Rastislav Balheda, Brian Bot, Carlos Gomez-Roca, Clarisse Dromain, Samy Ammari, and Jean-Charles Soria

Table of Contents

PREDICTIVE BIOMARKERS AND PERSONALIZED MEDICINE

- 253 Plasma MicroRNA Are Disease Response Biomarkers in Classical Hodgkin Lymphoma
Kimberley Jones, Jamie P. Nourse, Colm Keane, Atul Bhatnagar, and Maher K. Gandhi

- 265 Modeling RAS Phenotype in Colorectal Cancer Uncovers Novel Molecular Traits of RAS Dependency and Improves Prediction of Response to Targeted Agents in Patients
Justin Guinney, Charles Ferté, Jonathan Dry, Robert McEwen, Gilles Manceau, KJ Kao, Kai-Ming Chang, Claus Bendtsen, Kevin Hudson, Erich Huang, Brian Dougherty, Michel Ducreux, Jean-Charles Soria, Stephen Friend, Jonathan Derry, and Pierre Laurent-Puig

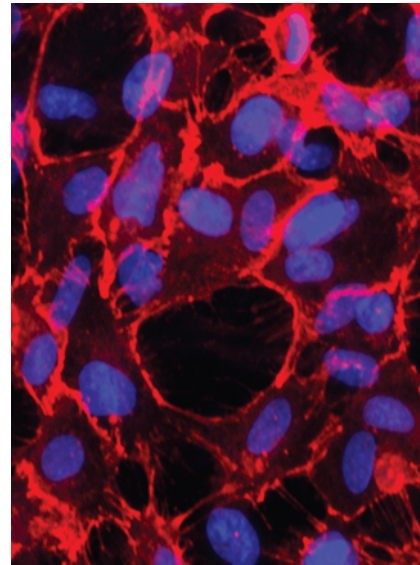
 AC icon indicates Author Choice

 CME icon indicates that this article is available for continue medical education credit at <http://cme.aacrjournals.org>

For more information please visit www.aacrjournals.org

ABOUT THE COVER

The cover shows immunofluorescent labeling of the blood-brain barrier marker GLUT-1 (red) in cultured human brain microvascular endothelial cells. Nuclei (blue) were stained with DAPI. For details, see the article by Malin and colleagues on page 56 of this issue.



Clinical Cancer Research

20 (1)

Clin Cancer Res 2014;20:1-272.

Updated version Access the most recent version of this article at:
<http://clincancerres.aacrjournals.org/content/20/1>

E-mail alerts [Sign up to receive free email-alerts](#) related to this article or journal.

Reprints and Subscriptions To order reprints of this article or to subscribe to the journal, contact the AACR Publications Department at pubs@aacr.org.

Permissions To request permission to re-use all or part of this article, use this link <http://clincancerres.aacrjournals.org/content/20/1>. Click on "Request Permissions" which will take you to the Copyright Clearance Center's (CCC) Rightslink site.